



# Impose, Fiery Edition

SERVER & CONTROLLER SOLUTIONS



## Solution that Makes Document Imposition Intuitive

Imposition errors stemming from complex jobs are costly and drain time from tight production schedules. EFI® Impose, Fiery® Edition streamlines and automates the imposition process, making production more efficient. It also eliminates the need for third-party imposition software.

### Reduces Time and Errors

EFI Impose is an intuitive WYSIWIG solution designed for production environments. The robust toolset delivers a fast, automated approach to time consuming and tedious tasks that leave operators open to errors.

With EFI Impose, designers do not need to worry about including imposition settings. They now can delegate this activity to operators at production time, enabling them to take advantage of the solution's fast, accurate document imposition capabilities.

### Efficient Document Assembly

EFI Impose extends the driver-based imposition capabilities offered by Booklet Maker. It allows users to edit and assemble entire static or variable data documents on the Fiery before RIPping for final output. These features include editing without modifying native files, adding or deleting pages, and the ability to do a preflight check for potential errors.

### Imposition for Complex Documents

The solution reduces the complexity associated with variable data printing (VDP) jobs for one-to-one communications. With EFI Impose, variable data jobs with multiple records of variable length can be imposed in specific sequences to produce a variety of applications and materials, including booklets, books, coupons and business cards.

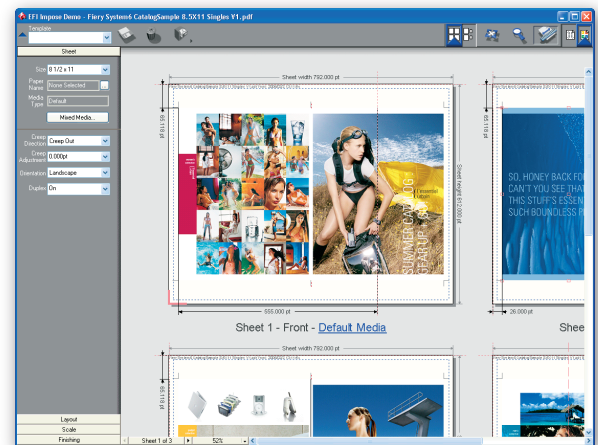
The Control Strip, designed for VDP imposition lets operators quickly identify mistakes, reduce waste, and improve turnaround times.

Raster Preview allows operators to view thumbnail and full size previews of raster data (post-RIP) for the imposition layout. The ability to preview raster data on screen or preview and print at the same time provides a late-stage proofing and control point before submitting a job to print production.

### Increased Productivity

The solution's productivity features streamline workflow in busy production operations and leverage automation, reducing errors. Users can:

- Create unlimited user definable imposition templates to streamline the imposition process and eliminate repetitive tasks.
- Quickly and easily view thumbnails and full-screen previews of actual page content in the imposition signature.
- Leverage Fiery's Hot Folder utility to automatically impose documents using imposition templates.
- Manage production of imposed jobs with mixed media requirements.
- Start cutting, sorting and packing before a job has finished printing.



EFI Impose also uses Fiery gang-up styles to save time and cut production costs by grouping individual images together for printing. Ganging work not only increases throughput but reduces production costs.

### PDF Benefits

Since EFI Impose outputs a print-ready PDF file, imposed jobs can be electronically sent to customers for final review prior to printing, shortening approval cycles. Imposed PDF files also can be archived for future reprinting and printed on engines not equipped with in-RIP imposition.



# Impose, Fiery Edition

## SERVER & CONTROLLER SOLUTIONS



EFI's portfolio of integrated solutions increases productivity and improves your bottom line. Find out more at [www.efi.com](http://www.efi.com).

### Powerful Imposition Tools for Speed and Flexibility

**EFI Impose** runs on Windows clients. The solution works within the EFI Command WorkStation® interface, and imposition tasks can be done at the Fiery server or remotely at client desktops.

**Unlimited Imposition Templates:** Creates and saves custom templates for re-use, eliminating redundant tasks and reducing errors.

**Document Assembly & Edit:** Allows viewing of thumbnails and full-screen previews. Edits without opening native files. Adds and deletes pages. Offers last-minute text and image editing.

**Preflighting:** Allows pre-production error checking.

**VDP Workflows:** Removes complexity from VDP workflows by using the same workflow regardless of VDP language. Includes raster preview, sample proof printing and Control Strip for quick identification of spoiled sheets.

**Unique Cut & Stack:** Enables users to start cutting, sorting and packing before jobs finish printing.

**PDF Archive:** Archives imposed jobs as PDF files for easier reprinting. Shortens proofing cycles by sending remote customers the imposed PDF for approval. Supports Acrobat 7, PDF 1.6 and Enfocus Pitstop 6.x.

**Gang-Up Styles:** Has traditional Unique and Repeat and other gang-up styles available for VDP and non-VDP jobs.

**Non-Printable Area Indicator:** Detects overlap of image and non-printable area and adjusts layout before RIPping to ensure accurate printing.

**Define Scaling Factor:** Provides increased control over scaling options.

**Delivery Options:** Changes the output sequence to optimize the finishing process.

**CoverSet-Up:** Defines cover printing characteristics. Changes pagination dynamically by inserting required blank pages.

**Mixed Media:** Specifies media assignment from interface with visual reference to final content, reducing errors.

**Paper Catalog Definition:** Defines custom substrates and adds to paper catalog to make media specification faster and easier.

**Booklet Maker Support:** Supports driver-based imposition through Booklet Maker, allowing jobs to move between Impose and the Booklet Maker.

**Measurement Tool:** Determines the distance between a page's reference point and a specific corner or edge of the page and/or sheet.

**Creep Adjustment:** Adjust for creep to deliver straight, aligned text throughout a multi-page document.

**Customizable Trim and Fold Marks:** Define the color, length, width, and trim type and fold marks independently.

**Add, Delete and Duplicate Sheets:** Add, delete, or duplicate imposed images to any specific location without going back to the source document, inserting custom text for blank pages.

**Multi-Up Support:** Offers imposition styles of up to 10 rows and 10 columns to optimize paper use for small items. Page double-up saves on click charges.

303 Velocity Way  
Foster City, CA 94404  
[650] 357 3500  
[www.efi.com](http://www.efi.com)

ColorWise, Command WorkStation, DocBuilder Pro, DocStream, EDOX, EFI, Fiery, the Fiery logo, Fiery Driven, the Fiery Driven logo, OneFlow, PrinterSite, PrintFlow, PrintMe, PrintSmith, PrintSmith Site, Prograph, Proteus and RIP-While-Print are registered trademarks of Electronics For Imaging, Inc. in the U.S. Patent and Trademark Office and/or certain other foreign jurisdictions. Bestcolor is a registered trademark of Electronics For Imaging GmbH in the U.S. Patent and Trademark Office. ADS, AutoCal, Auto-Count, Balance, Build, ColorCal, Digital StoreFront, Estimate, Fiery Link, Fiery Prints, Fiery Spark, FreeForm, Hagen, Intelligent Device Management, Logic, MicroPress, Printcafe, PSI, PSI Flexo, RIPChips, Scan, SendMe, Splash, Spot-On, VisualCal, WebTools, the EFI logo, the Fiery Prints logo, and Essential to Print are trademarks of Electronics For Imaging, Inc. Best, the Best logo, Colorproof, PhotoXposure, Remoteproof, and Screenproof are trademarks of Electronics For Imaging GmbH.

All other terms and product names may be trademarks or registered trademarks of their respective owners, and are hereby acknowledged.  
©2006 Electronics For Imaging

SYS&IMPOSE-DS-US-0406-45055914