



Color Profiler Suite

GRAPHIC ARTS SOLUTIONS

Get the Highest Color Quality

EFI Color Profiler Suite offers the best profiling solution for any printing environment and is especially suited for printers driven by EFI servers. The complete, integrated color management tools ensure total color quality control in the color printing workflow. The flexible suite is based on EFI's market-leading color management solutions used by the most demanding color professionals.

Achieves Optimum Color Quality

The unique tools let the user get the best color out of printers. The Color Profiler Suite delivers precise control in every step of the color printing process, achieving the highest quality.

Delivers High Return on Investment

The Suite optimizes your investment by producing the highest color consistency and accuracy. It also ensures the best integration with EFI servers and can be combined with the EFI ES-1000 spectrophotometer for multiple purposes such as calibration and spot color reading without buying extra hardware.

Increases Productivity

The tools reside in one color management suite, so users don't need to change measurement devices or open different software, ensuring compatibility between applications. It also streamlines operations through the Suite's seamless integration with EFI servers by customizing printers' presets.

Shortens Learning Curve

The tools come with an intuitive user interface, shortening the learning curve and making adoption to new tools quicker and easier.

Simplified Purchase and Support

The solution enables businesses to receive all the pieces that are part of the printing solution from a single manufacturer, so the sales support, installation and acquisition processes are simplified.

Cost Savings

It decreases costs by combining the benefit of the advanced calibration method using the EFI ES-1000 along with the advanced profiling methods of EFI Color Profiler Suite. This situation results in superior color and a significant reduction in toner consumption because workflow is fine tuned to each print engine's unique characteristics.

Color Profiler Suite Software Modules

Profile Creation Modules

Printer Profiler: Creates ICC profiles for CMYK and RGB output devices that allow users to get the most from their color output device. Also, enables consistent color across output devices.

Monitor Profiler: Calibrates and creates ICC profiles for CRT, LCD and laptop displays. Matches multiple monitors to a reference monitor. Also, allows to produce accurate soft proofs.

Device Linker: Develops fully ICC compatible device link profiles for RGB and CMYK color spaces. Builds direct connections between source and destination imaging devices to deliver consistent color in a controlled environment.

Profile Evaluation Modules

Profile Editor: Edits profiles using an intuitive WYSIWYG user interface with editing features such as selective color, hue edit, node edit and media white point. Produces perfect profiles to adapt to the highest color demands.

Profile Inspector: Visualizes color spaces in 3D defined by ICC color profiles. Compares profiles and plots spot colors to visualize them in reference to a color. Validates profiles and printers' proofing capabilities in a fast, intuitive way. Also, provides a fully visual user interface, reducing errors.

Quality Assurance Module

EFI Color Verifier: Measures and compares color values from proof-to-proof, print-to-print, proof-to-profile or print-to-reference for effective quality assurance. Ensures consistency between a reference print and subsequent prints. Verifies the proofs match the prints and comply with key standards.



Color Profiler Suite

GRAPHIC ARTS SOLUTIONS

EFI's portfolio of integrated solutions increases productivity and improves your bottom line. Find out more at www.efi.com.

Product Configurations

EFI Color Profiler Suite

Comes with EFI ES-1000 UV filter or EFI-ES1000 non-UV filter versions.

EFI Color Profiler Software Upgrade for EFI Color Profiler 1.5X to EFI Color Profiler Suite

Is for customers who already own an EFI Color Profiler 1.5 and above.

EFI Color Profiler Suite Software Upgrade for EFI ES-1000

Is for customers who already own an EFI ES-1000.



Product Specifications with Minimum System Requirements

Operating system

- Windows 2000/XP/XPe.
- Mac OS 10.3 & 10.4 (PowerPC and Intel supported).

Configuration

- One available USB port.

Memory

- 256 MB RAM.

Hard Drive Space

- 150 MB of available hard disk space.

Monitor resolution

- 1024 x 768.

Supported Printers

- CMYK and RGB printers.

Supported Monitors

- LCD, CRT and laptop monitors.

Supported Languages

English, French, Italian, German, Spanish, Brazilian Portuguese, Dutch, Japanese.

Technical Specifications for EFI ES-1000

Supported measurements include:

- Reflectance single measurement.
- Reflectance strip measurement with automatic patch detection.
- Emission.

General

- Spectral analyzer: Holographic diffraction grating with diode array.
- Interface: USB 1.1 or higher.
- Physical dimensions: (length x width x height)
151 mm x 66 mm x 67 mm 6 x 2.6 x 2.6 inches.
- Weight: 185 gram (6.5 oz).

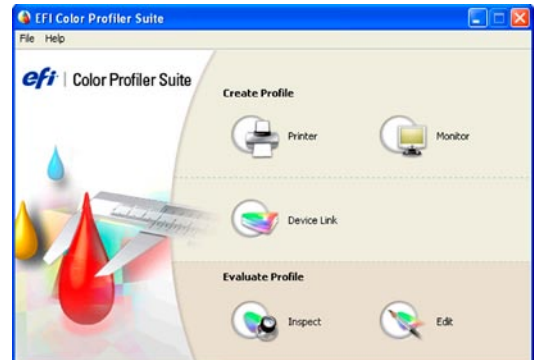
Power and Environmental Conditions

Power required: Powered by USB.

Operating temperature: 10°C to 35°C (50°F to 95°F).

Storage temperature: -10°C to 50°C (14°F to 122°F).

Humidity: 0-80% non-condensing.



303 Velocity Way
Foster City, CA 94404
[650] 357 3500
www.efi.com

ColorWise, Command WorkStation, DocBuilder Pro, DocStream, EDOX, EFI, Fiery, the Fiery logo, Fiery Driven, the Fiery Driven logo, OneFlow, PrinterSite, PrintFlow, PrintMe, PrintSmith, PrintSmith Site, Prograph, Proteus and RIP-While-Print are registered trademarks of Electronics For Imaging, Inc. in the U.S. Patent and Trademark Office and/or certain other foreign jurisdictions. Bestcolor is a registered trademark of Electronics For Imaging GmbH in the U.S. Patent and Trademark Office. ADS, AutoCal, Auto-Count, Balance, Build, ColorCal, Digital StoreFront, Estimate, Fiery Link, Fiery Prints, Fiery Spark, FreeForm, Hagen, Intelligent Device Management, Logic, MicroPress, Printcafe, PSI, PSI Flexo, RIPChips, Scan, SendMe, Splash, Spot-On, VisualCal, WebTools, the EFI logo, the Fiery Prints logo, and Essential to Print are trademarks of Electronics For Imaging, Inc. Best, the Best logo, Colorproof, PhotoXposure, Remoteproof, and Screenproof are trademarks of Electronics For Imaging GmbH.

All other terms and product names may be trademarks or registered trademarks of their respective owners, and are hereby acknowledged.

©2006 Electronics For Imaging

ColorProfiler-DS-US-0806-45036667