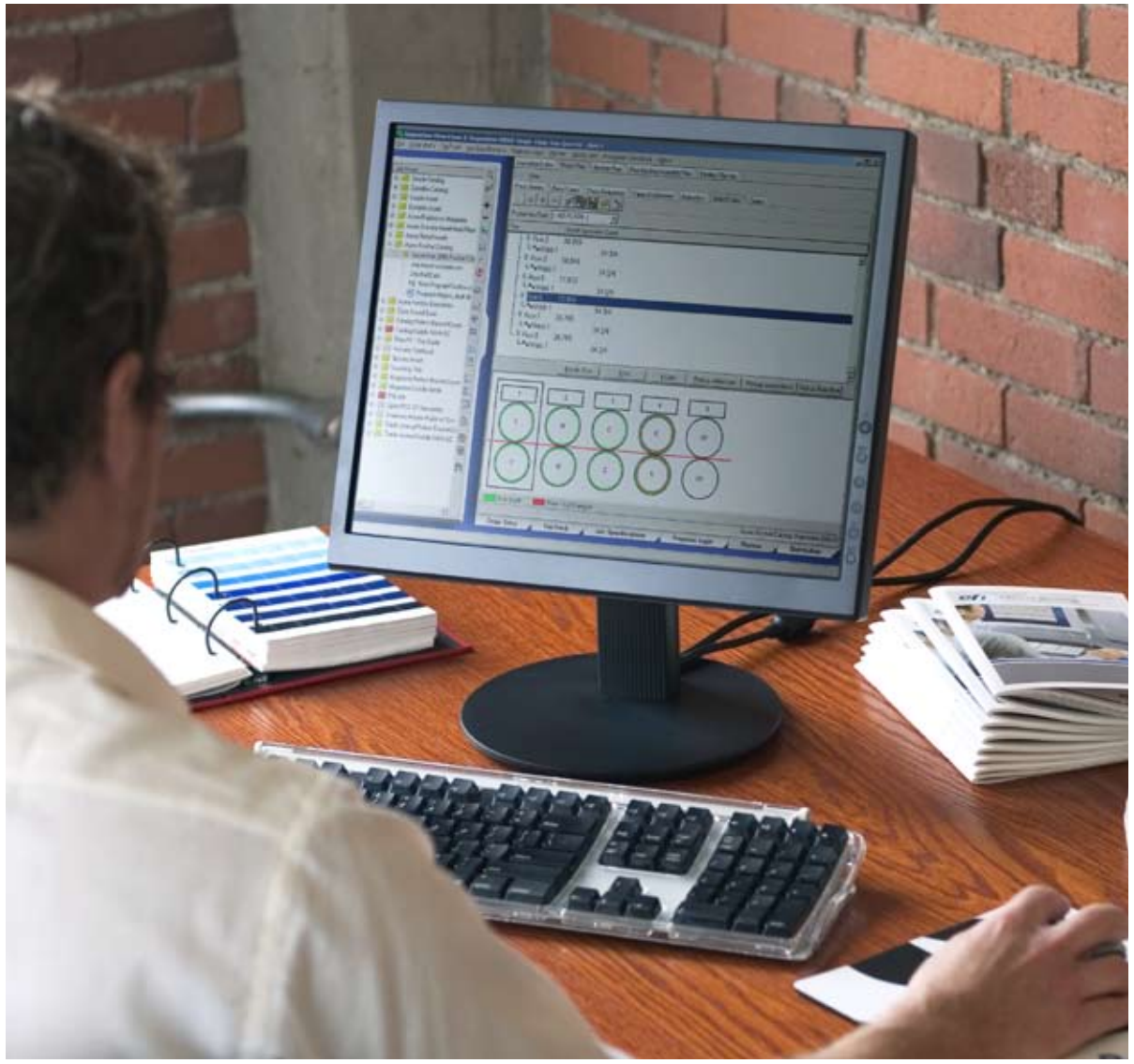




Prograph
PRINT MIS SOLUTIONS



Publication
Planning
Module

EFI Prograph

EFI Prograph offers a powerful, comprehensive publication planning solution. Now integrated with EFI Hagen OA, the planning capabilities of Prograph have been linked with the end-to-end enterprise management capabilities of Hagen OA, offering unequalled flexibility and power.





EFI Prograph: Publication Planning Module

Prograph takes the approach of “defining the product and planning the process,” enabling the printer to select the best manufacturing process to suit the unique characteristics of the individual publication, catalog, insert or book.

The Prograph system reflects the manufacturing capabilities of each printing plant and responds to the product definition and the client’s production needs by mapping products to equipment and resources. Prograph is especially adept at handling the complex versioning requirements of today’s publication world, providing the user with a strong visual representation of the job. From estimating and production planning through accurate, detailed invoicing, the Hagen Prograph solution is the ultimate publishing toolbox that includes the following features:

- Strong visual presentation of critical planning data
- Intuitive drag-and-drop, point-and-click environment
- Ability to handle complex versioning
- Prepress component planning
- Generate detailed “run lists” for press with plate change detail
- Performs sophisticated paper planning calculations
- Provides detailed finishing plan
- Generates distribution plan for shipping
- Import capability for job specification and shipping details

Prograph has been utilized by many of the largest publication printers in the world for the last ten years including Quebecor World, The Sheridan Group, Transcontinental Printing and Perry Judd’s. With the integration of Prograph and Hagen, EFI’s Print MIS clients now have a planning tool to make more knowledgeable, money saving business decisions.



The Prograph “Navigator”

The Prograph “Navigator” is your window into the system and provides a snapshot of the job with quick access to critical production information. It provides organizational tools and access for the experienced user to create the most elaborate production plans. The attachment of files of all types gives the user the ability to review e-mails, correspondence, production documents and e-faxes pertaining to a particular job.

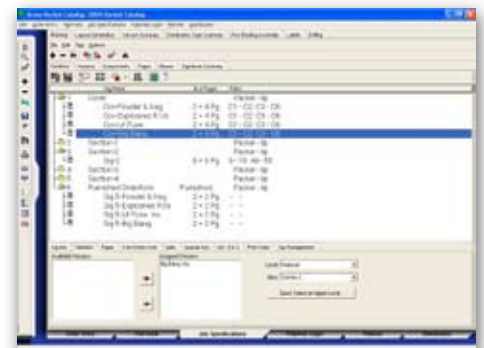
Status indicators change color as the job moves through production. One click on each tab gives even the most basic user a comprehensive look at every aspect of the job.



The Profits are in the Details

The profit potential of any publication job can be greatly enhanced through careful production planning and execution. Prograph provides the detail necessary for optimization of equipment and personnel.

Versions, page counts, folioing, trim sizes, furnished signatures and version synchronization are all important elements tracked by Prograph with the flexibility to handle virtually any job and—most importantly—the ability to make changes on the fly as the project matures.



Visualize Detail on Every Level

Prograph presents a visual working diagram of your publication. This diagram provides signature, page and sub-page detail with visual cues highlighting version and plate change requirements.

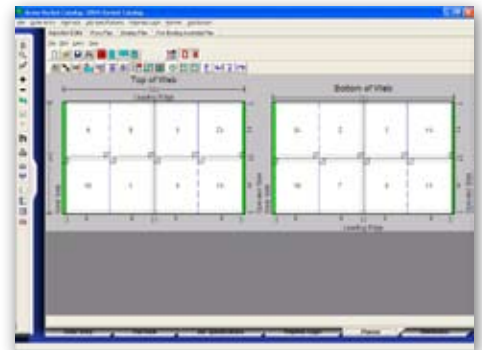
Your planner builds the publication using drag-and-drop functionality—Prograph provides constant feedback during the build and then produces the run lists and production instructions required for successful execution of the plan.



Use our Library or Write Your Own Book

Prograph contains a powerful imposition tool for sheetfed and web projects. Popular impositions can be recalled from our library while unique and custom impositions can be built on the fly for a specific project.

The Prograph imposition diagram contains all the details necessary for production, including machine setup and production instructions. One of the most powerful features of Prograph is that impositions automatically scale to the trim size of the job, reducing by hundreds the number of unique impositions that need to be maintained.





Planning for Complex Production Needs

The Prograph solution works with Hagen to provide the right information to the right people at the right time. This is critical in an environment where an inaccurate press count—a shortage or an overrun on any signature—can eat up your profits and delay delivery.

Prograph creates a “sequenced” run list with paper and plate requirements, and is capable of handling the most complex sheetfed, monster web and long-run gravure workflows.

The Prograph planning process prevents the mismatching of signatures, impositions and presses—eliminating costly “impossible” production combinations early in the planning process.

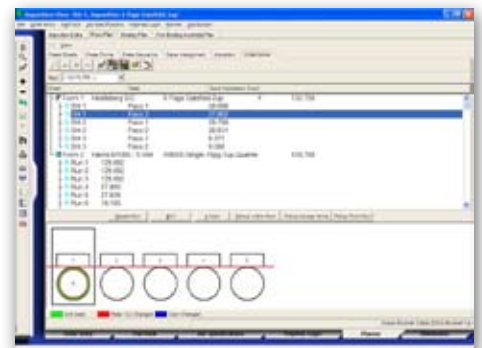


Real-World, Real-Time Production Management

Each component of Prograph includes an embedded ability to respond to real-world production events. Should the client change the layout, the page count, the quantity, the paper, you’ll have the ability to respond to that change quickly and confidently.

The graphical interface shows the production run and provides a point-and-click environment for adjustments.

If a client, for example, pulls a signature for review, the user can re-sequence the run and Prograph will automatically recalculate paper requirements and waste factors.



Shipping & Distribution

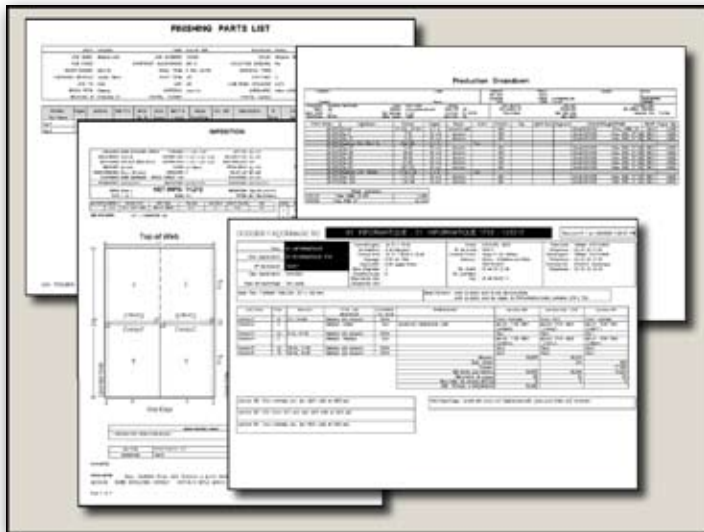
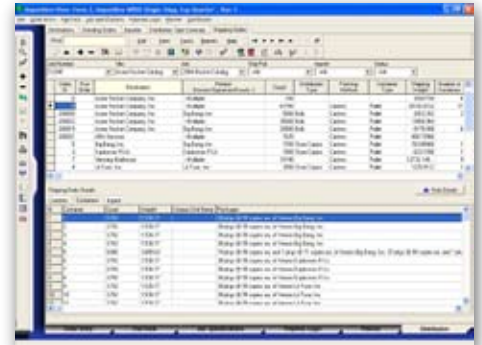
Prograph works with Hagen OA to provide a complete end-to-end solution from planning to delivery including a powerful distribution planning module component. Whether the job requires a single pallet or an elaborate combination of assorted versions and parts, Prograph will manage all aspects of the shipment including load flags, package labels and shipping manifests.

Shipping orders can be created manually, activated from standing orders or imported from customer information.

The Prograph "containerization" logic will calculate the amount of product that will go into each package, how many packages will go on a layer and how many layers go onto a pallet or into a container. The system automatically calculates the weight of packages and containers including tare weights for packaging materials of all types.

Collect, Organize, Present

An important part of any management solution is its ability to collect and present the information to the people who need to make timely, profitable decisions. Both Hagen and Prograph include powerful report writer tools and a suite of management reports designed to provide the information you need, when you need it.





Get Connected with EFI

EFI's integrated solutions—Production Printing, Prepress and Graphic Arts, Web to Print, Print Management Information System (Print MIS) and Corporate—give your company a competitive edge in increasing profits, improving productivity, streamlining business processes, reducing overhead costs and enabling your team to work more productively and profitably. Visit www.efi.com to learn more.

303 Velocity Way
Foster City, CA 94404
[650] 357 3500
www.efi.com

ColorWise, Command WorkStation, DocBuilder Pro, DocStream, EDOX, EFI, Fiery, the Fiery logo, Fiery Driven, the Fiery Driven logo, OneFlow, PrinterSite, PrintFlow, PrintMe, PrintSmith, PrintSmith Site, Prograph, Proteus and RIP-While-Print are registered trademarks of Electronics for Imaging, Inc. in the U.S. Patent and Trademark Office and/or certain other foreign jurisdictions. Bestcolor is a registered trademark of Electronics For Imaging GmbH in the U.S. Patent and Trademark Office. ADS, AutoCal, Auto-Count, Balance, Build, ColorCal, Digital StoreFront, Estimate, Fiery Link, Fiery Prints, Fiery Spark, FreeForm, Hagen, Intelligent Device Management, Logic, MicroPress, Printcafe, PSI, PSI Flexo, RIPChips, Scan, SendMe, Splash, Spot-On, VisualCal, WebTools, the EFI logo, the Fiery Prints logo, and Essential to Print are trademarks of Electronics for Imaging, Inc. Best, the Best logo, Colorproof, PhotoXposure, Remoteproof, and Screenproof are trademarks of Electronics For Imaging GmbH.

All other terms and product names may be trademarks or registered trademarks of their respective owners, and are hereby acknowledged.
©2006 Electronics For Imaging

01-09-05-US-CMYK-HI-SYS7-BRO