



**efi Cretaprint X4**  
Digital Inkjet Printer

The most advanced  
and reliable EFI  
digital printer  
for the new trends

# Maximum performance under all printing conditions

## Cretaprint X4

The new X4 has been designed to obtain ceramic products with high added value, the highest quality and distinctive. Is much more robust and can hold up to 8 ceramic printing bars for decoration and special finishing purposes. The new electronics and ink system produces the highest accuracy in all production conditions. The new X4 has been developed to attain an easier use, lower maintenance costs and energy savings. As a lead advantage of EFI Cretaprint, the new X4 allows the use of different print heads and digital applications, even on the same machine.

This allows X4 users to obtain differentiating, innovative and inimitable products. It is especially well suited for large format ceramic production lines seamlessly working in combination with large format slab press systems. The new EFI Cretaprint X4 also includes the new version of DTP 2.0 (double tile printing) system that allows to split the printing content in two independent lines with limited dead space in between, maximizing the equipment utilization and allowing for a variety of different combination of tile formats.

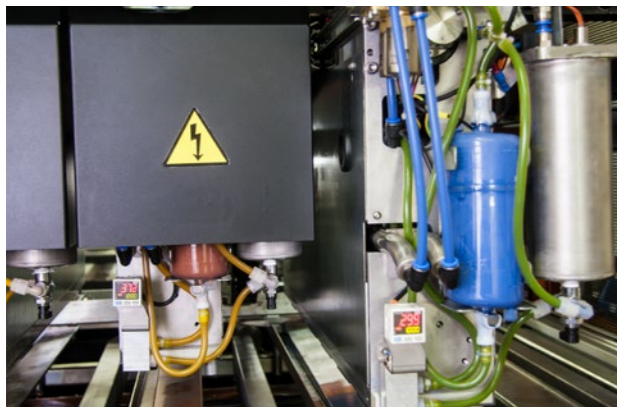


# The new EFI Cretaprint X4



## New Ink System

This new ink system allows a faster and easier refilling without spillage. Ink changes are faster due to its easily and fully extractable ink tanks. This new system uses fewer heaters and no stirrers. Tubing design makes the system anti-settling. The reverse flow can be switched on just pressing a button on the display.



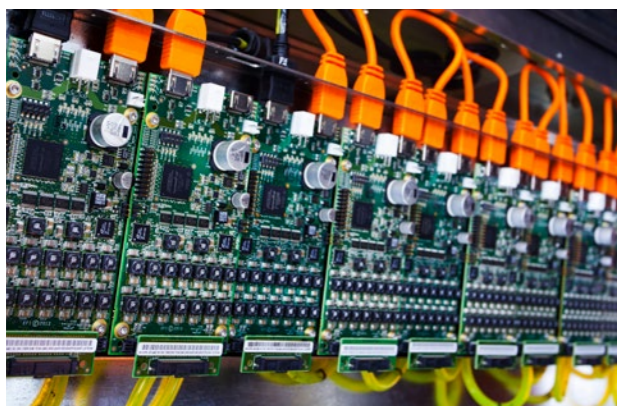
## Advanced new automatic nozzle cleaning system

This system generates a significantly fewer permanently missing nozzles. In X4 printers print heads have a much longer life than in other printers with this cleaning system.



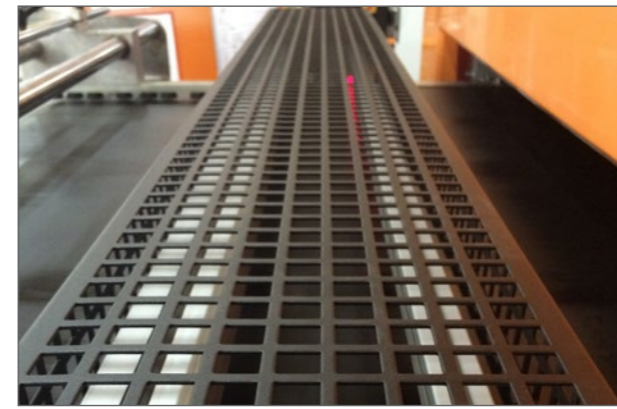
## New Compact frame

This new printer's generation has new compact and reduced frame, holding up to 8 printing bars. Bars are individual and can be pulled out if required, making accessible all the components for maintenance tasks. Bars separation has been optimized for a highly efficient steam and mist extraction, without compromising printing quality. Automatic height adjustment of the vacuum bars and automatic jetting distance adjustment has been included.



## New EFI Electronics

Having own EFI electronics allows us to be more flexible when incorporating improvements. Our electronics cards are individual and fully protected for any printhead. Images upload is faster and the user can modify settings on the fly for small re-adjustments during production.



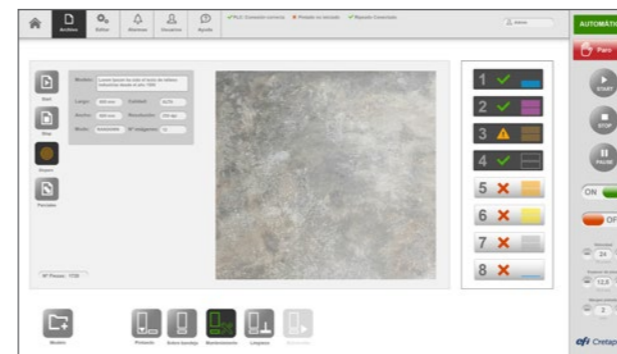
## Tile thickness laser detector

A dual laser at the machine's entrance detects both the position and the thickness of each piece. Thus, printing bars come down and adjust themselves to the tile's height.



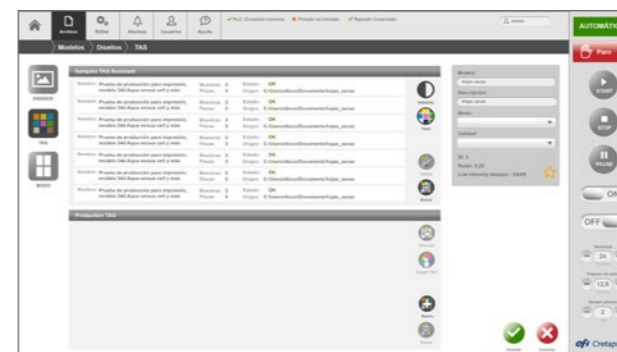
## Vacuum

Highly efficient Vacuum system between bars



## New User Interface

Our new user interface is fully touch screen. Navigation is friendly and basic functions are permanently on display. All main functions are accessible in 1 or 2 clicks. Interface can be personalized with the customer logo.



## TAS

It includes additional features such as TAS (Tone Adjustment System), linearization or ink consumption calculation. TAS is based on an intuitive interface that guides the user through the process of study and application of changes in tone or intensity to apply to a model. These features for all our machines enable adjustments or variations on existing models in the system without use of external additional software or extensive knowledge in colour management.

## Optional EFI Cretaprint X4



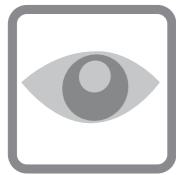
### DTP: 2 formats, 2 designs, 1 printer

Double Tile Printing is a printing solution for the ceramics sector that allows simultaneous printing of two tiles of different formats and with different designs.



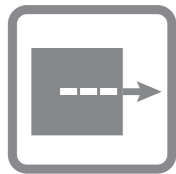
### SMS Alerts

This new kit, which can be installed in either new machines (platform 4) or those already installed (C2, P2, C3 and P3), allows users to track any incident or warning that the EFI Cretaprint printer detects in real time reporting to their mobile phones.



### Cretavision

It allows associating each one of the designs of a model to different reliefs of a set of tiles. We can, therefore, perfectly fit-in a certain design with the tile's relief, regardless of the order in which the tiles enter the system.



### Table in/out

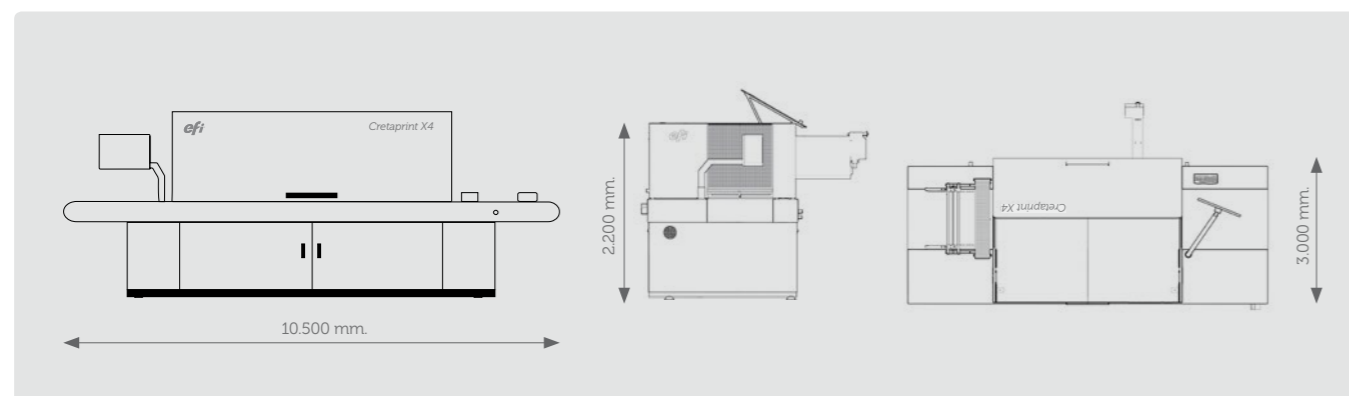
With the IN and OUT accessory tables, long tiles are set flat and aligned before printing for an optimal print quality, reducing the risk of defects due to transition from the production line in and out of the printer, thus maximizing printing accuracy. This is recommended for tiles exceeding two times the default entry and exit space on the printer belt.



### Fiery proServer

EFI™ Fiery® proServer for Cretaprint is the first complete color management system for ceramic tile decoration (printing). Used with the Cretaprint digital ceramic printers, the proServer produces the most accurate and consistent color quality for ceramic tile decoration and lowers your ink consumption, regardless of the production conditions.

## Dimensions EFI Cretaprint X4



## Updated Technical Data

PRINTHEAD MODEL	TTEC CF1L	TTEC CF1XL	Xaar 1002/1003/GS12	Xaar 1002/1003/GS40	Seiko RC1536
Printheads width (mm)	53,5	53,5	70,05	70,05	108,3
Number of nozzles	636	636	1000	1000	1536
Native resolution (dpi)	300	300	360	360	360
Drop size range (pl)	13 - 91	36 - 180	12 - 84	40 - 160	13 - 98
Greyscale levels	Up to 8	Up to 6	Up to 8	Up to 5	Up to 8
Firing frequency (kHz) jetting max drop volume	4,8	4,8	6 - 12	6	10,2 - 28
gr/m <sup>2</sup> (25m/min)	15	30	20	40	45

Information according to the print-head manufacturer

MACHINE ASSEMBLY	
External power supply	variable (220/380/400/440/480V)
Max power consumption (8 colours)	40 KVA
Electrical phases	3F+GND
Power connection frequency	50/60 Hz
Pneumatic connection	6 bar
Cabin recommended temperature	25-35°C
UPS included	Yes

MACHINE SPECS	
Number of inks	up to 8
Print direction	right / left
Min. tile thickness (mm)	3
Max. tile thickness (mm)	30
Max. tile length (mm)	3000
Print speed (m/min)	up to 70 m / min
Centering printing precision	< 0,3 mm

SOFTWARE	
Image filetype	TIFF and RPF
Rendering time	Variable
Image loading time	Between 1 sec. and 15 sec.
Image changing time during production	≈ 1 sec.
Parallel ripping and printing	Yes
Number of images per model	100
Print an image without stopping	Yes
Cretavision: reliefs recognition system	Optional
Double tile printing	Optional

MACHINE DIMENSIONS	
Width	3000 mm.
High	2200 mm.
Length	10500 mm.

CABIN DIMENSIONS	
Width	6000 mm.
High	3500 mm.
Length	13200 mm.

# EFI fuels success.

Used by tens of millions of professionals around the world, EFI is the only technology company that creates products and services exclusively focused on helping businesses and enterprises be more successful.

Pol. Ind. Supoi-8. C/. Dels Ibers, 54. Apdo. correos nº 93 - 12550 Almazora (Castellón) - Spain  
Tel. + 34 964 340 264 · Fax +34 964 256 211

cretaprintsales@efi.com · [www.efi.com/cretaprint](http://www.efi.com/cretaprint)



Nothing herein should be construed as a warranty in addition to the express warranty statement provided with EFI products and services.

The APPS logo, AutoCal, Auto-Count, Balance, Best, the Best logo, BESTColor, BioVu, BioWare, ColorPASS, Colorproof, ColorWise, Command WorkStation, CopyNet, Cretachrom, Cretaprint, the Cretaprint logo, Cretaprinter, Cretaroller, DockNet, Digital StoreFront, DocBuilder, DocBuilder Pro, DocStream, DSFdesign Studio, Dynamic Wedge, EDOX, EFI, the EFI logo, Electronics For Imaging, Entrac, EPCount, EPPhoto, EPRegister, EPStatus, Estimate, ExpressPay, Fabrivu, Fast-4, Fiery, the Fiery logo, Fiery Driven, the Fiery Driven logo, Fiery JobFlow, Fiery JobMaster, Fiery Link, Fiery Prints, the Fiery Prints logo, Fiery Spark, FreeForm, Hagen, Inkintensity, Inkware, Jetrion, the Jetrion logo, LapNet, Logic, MiniNet, Monarch, MicroPress, OneFlow, Pace, PhotoXposure, Printcafe, PressVu, PrinterSite, PrintFlow, PrintMe, the PrintMe logo, PrintSmith, PrintSmith Site, Printstream, Print to Win, Prograph, PSI, PSI Flexo, Radius, Rastek, the Rastek logo, Remoteproof, RIPChips, RIP-While-Print, Screenproof, SendMe, Sincolor, Splash, Spot-On, TrackNet, UltraPress, UltraTex, UltraVu, UV Series 50, VisualCal, VUTEK, the VUTEK logo, and WebTools are trademarks of Electronics For Imaging, Inc. and/or its wholly owned subsidiaries in the U.S. and/or certain other countries. All other terms and product names may be trademarks or registered trademarks of their respective owners, and are hereby acknowledged.