



Educational Services

---

**How-To:** Impose Jobs Using the User Defined Finish Size Workflow

**Date:** March 2011

# Article I. How-To

## Feature Overview

SeeSequence Impose is a server-based imposition application option that streamlines and automates the imposition process, making production more efficient. The user defined finish size workflow in SeeSequence Impose honors the designer's intent by automatically detecting the trim box and bleed box defined in the source document to base the imposition on those parameters in a few clicks.

## Customer Benefits

- Avoids the need to control imposition settings manually, resulting in a more accurate finished job
- Decreases errors and waste
- Faster job setup

## Objectives of the Exercise

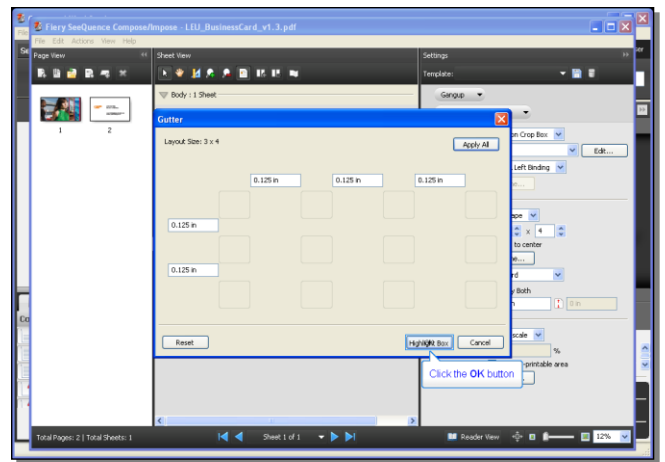
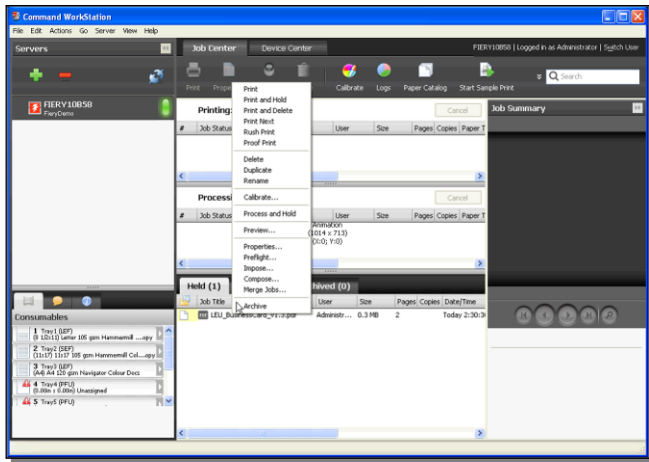
- Create an Imposition layout from a PDF file containing a business card, print on the front and back; enable gangup/repeat settings for multiple images per page.
- Enable gutter and bleed parameters and apply to layout.
- Show settings between Trim Box and User Defined workflow.

## Before you begin

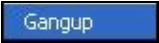







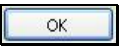
- Have Command WorkStation 5.3 or later opened and connected to at least one Fiery controller, running Fiery system 9/9e or above.
- SeeSequence Impose Dongle connected to the Command WorkStation client.
- Acrobat with PitStop installed on the Command WorkStation client.
- Import the sample file: **LEU\_BusinessCard.pdf** to the held queue.
- Ensure the printer and Fiery have been calibrated before printing any output.



**Note:** Each output device will have different procedures for configuring and printing the finished document. Consult the user documentation for the copier and Fiery that will be used in the Demo Script.

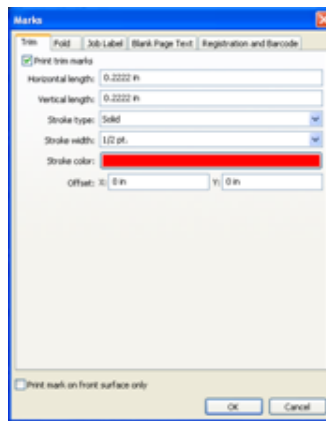


## Impose Jobs Using the User Defined Finish Size Workflow

1. Select File: **LEU\_BusinessCard.pdf** in Command Workstation 5
2. Right Click and Select **Impose** (Shown above, left)
3. The Fiery SeeSequence - LEU\_BusinessCard.pdf window opens
4. Below template, open first dropdown and select **Gangup** 
5. Below template, open second dropdown and select **Repeat** 
6. Select the **Sheet** Dropdown 
7. Select the **11x17/A3** 
8. Select the **Duplex** Dropdown 
9. Select the **Right & Left Binding** 
10. In Layout Area select Orientation **Landscape**
11. Enter **4 Row x 4 Column**
12. On Gutter, click the **Define...** button 
13. Gutter interface window opens, **type .25 inch** into one box area (Shown above, right)
14. Click the **Apply All** button 
15. Click the **OK** button 



**Note:** Defined entry of .25 inch gutter shows as 'white space' between cards in the Sheet View area in SeeSequence. Also any **Bleed** values must be manually added.



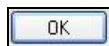
16. Go to the **Marks** area Click the **Define...** button

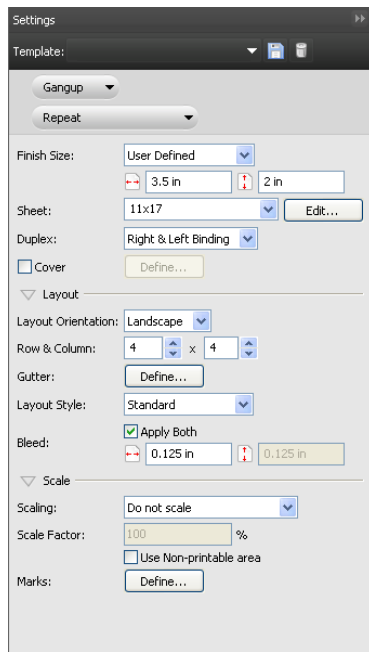


17. Check the **Print trim marks** box, marks dialog box opens (*shown above*) to change Horizontal and Vertical trim mark size, as well as a color pallet


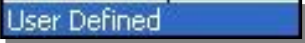
18. Click Stroke Color input and Choose a color for trim marks from color pallet

19. Click the **OK** button





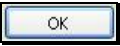

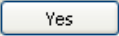
## Impose Jobs Using the User Defined Finish Size Workflow

1. Select the **Finish Size** combo box 
2. A dialog box: "Changing the Finish Size will reset the Bleed value", appears, click **OK**
3. Select the **User Defined** item 



**Note:** A) SeeSequence populates the finish size values from the trim size value in the document, once **User Defined** is enabled.

B) SeeSequence automatically populates the bleed value from the document, once **User Defined** is enabled. (*Shown above, right*)

4. Click the **OK** button 
5. Click on the **Close** window box 
6. The **Save** dialog box opens
7. Keep displayed name or type new one and click the **Yes** button 
8. Saved job appears in Hold Queue in Command Workstation
9. Set Properties and Print

## Print to Win

EFI ([www.efi.com](http://www.efi.com)) is a world leader in customer-focused digital printing innovation. EFI's award-winning solutions, integrated from creation to print, deliver increased performance, cost savings and productivity. The company's robust product portfolio includes Fiery® digital print controllers and solutions; VUTEk® superwide digital inkjet printers, UV and solvent inks; Rastek™ UV wide-format inkjet printers; Jetrion® industrial inkjet printing systems; print production workflow and management information software; and corporate

---

Auto-Count, BioVu, ColorWise, Command WorkStation, Digital StoreFront, DocBuilder, DocBuilder Pro, DocStream, EDOX, the EFI logo, Electronics For Imaging, Fabrividu, Fiery, the Fiery logo, Fiery Driven, the Fiery Driven logo, Inkware, Jetrion, MicroPress, OneFlow, PressVu, PrintIntellect, PrinterSite, PrintFlow, PrintMe, PrintSmith Site, Prograph, RIP-While-Print, Ultravu and VUTEk are registered trademarks of Electronics for Imaging, Inc. in the U.S. Patent and Trademark Office and/or certain other foreign jurisdictions. BestColor is a registered trademark of Electronics For Imaging GmbH in the U.S. Patent and Trademark Office.

AutoCal, Balance, BioWare, ColorPASS, EFI, EFI Pace, Estimate, Fast-4, Fiery Link, Fiery Prints, Fiery Spark, the Fiery Prints logo, FreeForm, Hagen, Logic, Printcafe, PrintSmith, Print to Win, PSI, PSI Flexo, RIPChips, Screenproof, SendMe, Splash, Spot-On, UltraTex, UV Series 50, VisualCal and WebTools are trademarks of Electronics for Imaging, Inc. Best, the Best logo, Colorproof, PhotoXposure, Remoteproof, and Screenproof are trademarks of Electronics For Imaging GmbH.

All other terms and product names may be trademarks or registered trademarks of their respective owners, and are hereby acknowledged.  
© 2009 Electronics for Imaging