



Educational Services

How-To: Image Enhance Visual Editor

Date: March 2011

Article 1: How-To

Feature Overview

Fiery Image Enhance Visual Editor allows for critical last minute photo editing and saves prepress time by eliminating lengthy image editing and helps makes photos look their best. The automated workflow in the easy to use interface allows operators to see a 'before and after' preview before submitting the job for print.

Customer Benefits

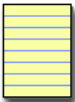
- Makes quick and easy corrections for photographs. Offers easy to use interface without the time or expense associated with traditional photo manipulation
- The Auto settings chooses the optimal exposure and color tone to bring out the picture's utmost brilliance
- The split screen preview gives instant feedback as photos are being manipulated

Objectives of the Exercise

- Show launch and interface of Fiery Image Enhance Visual Editor
- Demonstrate the ease of use of the Fiery Image Enhance Visual Editor features
- Show 'Before and After' preview window

Before you begin

- Have Command WorkStation 5.3.0.48 or above opened and connected to at least one Fiery controller, running Fiery system 9/9e or above.
- Fiery System 9 server requires GAP or GAPPE enabled.
- System 9e and 9R2e Fiery Servers require Productivity Package enabled.
- If using a Macintosh, OSX.6 is required.
- Import the file: **Newsletter_SiteSystems_v1_LTR.pdf** to the held queue.
- Ensure the printer and Fiery have been calibrated before printing any output.
- Calibrate, or apply proper monitor profile to workstation.



Note: Each output device will have different procedures for configuring and printing the finished document. Consult the user documentation for the copier and Fiery that will be used in the Demo Script.

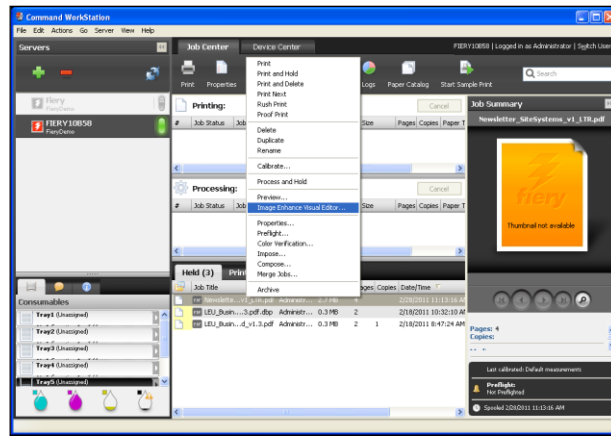

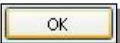
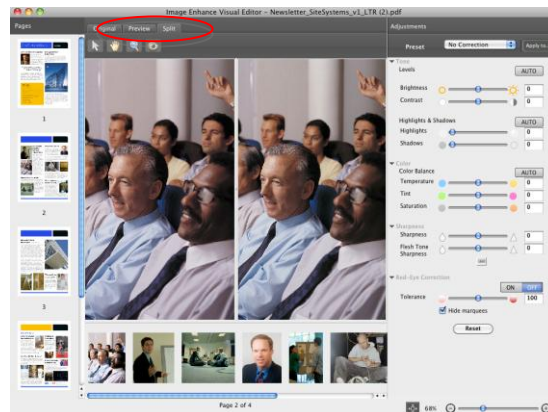

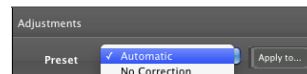


Image Enhance Visual Editor (IEVE)

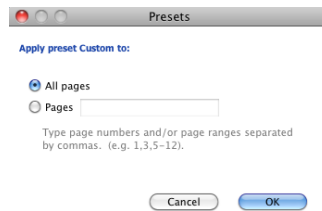
1. Select File: **Newsletter_SiteSystems_v1_LTR.pdf** in Command Workstation 5.3
2. Right Click and Select **Image Enhance Visual Editor** 
3. The Image Enhance Visual Editor Interface window opens
4. Dialog *may* appear informing of the need for a monitor profile, except on Win7 and Mac OSX systems
5. See “Do Not Show Again” and click **OK** 
6. After the file opens click on the second page to the left then pick the first image at the left of the filmstrip as shown



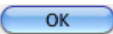
7. Select **Split** view tab as shown circled in red above 
8. From the preset menu at upper right choose “**Automatic**”



Note: When you set automatic, you notice that the right-side “adjusted” image in the split screen interface will change per your request. The Automatic preset turns on all individual automatic corrections in IEVE except red-eye.



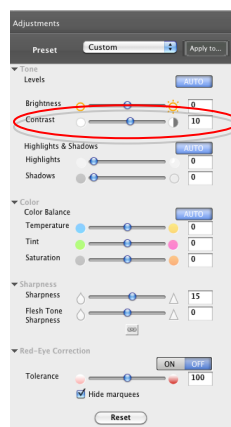
9. Now set “Apply to” in the upper right near the preset

10. Specify “All pages” and click **OK** 

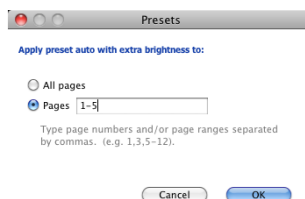
11. All images are now corrected with automatic settings as a novice operator can use IEVE

12. Pick the second image on the first page (building image)

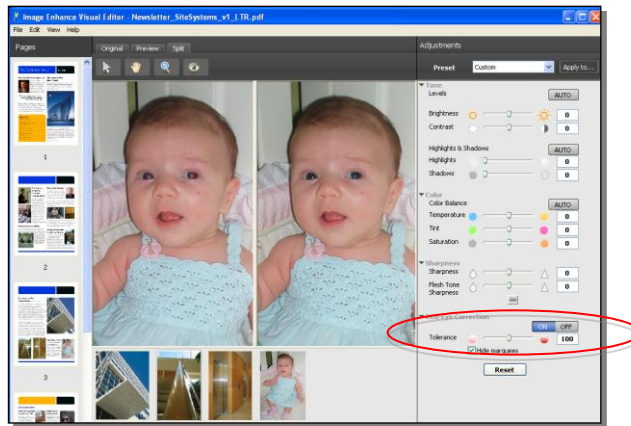
13. For this image, increase contrast manually by +10 using the IEVE controls



Note: You can save custom sets of corrections as presets. Presets can be applied to all pages or to a page range. For instance, a new preset called “auto with contrast +10” could now be saved as a custom preset if this correction will be re-used in the future Presets can be applied to all pages or to a page range. (screen shot below)

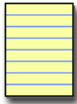


14. Select the red eye image, the fourth image in the filmstrip on page 3



15. Select the **Red-Eye Correction** area, Select **On**

16. Notice the split screen image will indicate red eye elimination



Note: Notice the dotted-line box (marquee) placed around each corrected eye. Click and drag additional selection regions to identify more red eye correction zones or close a marquee around a mis-detected red eye such as a piece of red jewelry. Check the **Hide Marquee** box to hide the selection marquees.

☒ Hide marquees

17. Quit IEVE and save the PDF

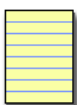
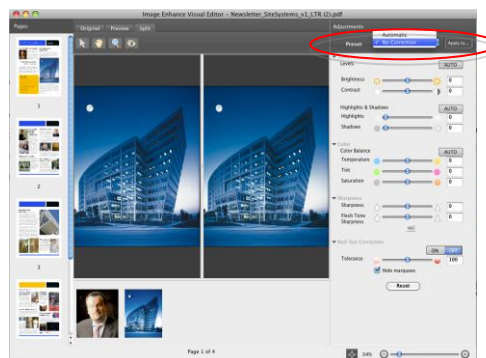
18. Make a print of the enhanced file if desired then open the PDF into IEVE again, discarding raster if one is present from printing

19. Go to the split view

20. Notice that all images have their corrections displayed

21. Select building image on page 1

22. Select the preset "No Correction" to see the image unedited, allowing operators to undo or fine tune earlier corrections



Note: Only saved PDFs can be re-edited to fine tune images further. Edits to PostScript files are permanent when saving. Also remember that IEVE does not allow for editing of synthetic images or graphics

Print to Win

EFI (www.efi.com) is a world leader in customer-focused digital printing innovation. EFI's award-winning solutions, integrated from creation to print, deliver increased performance, cost savings and productivity. The company's robust product portfolio includes Fiery® digital print controllers and solutions; VUTEk® superwide digital inkjet printers, UV and solvent inks; Rastek™ UV wide-format inkjet printers; Jetrion® industrial inkjet printing systems; print production workflow and management information software; and corporate

Auto-Count, BioVu, ColorWise, Command WorkStation, Digital StoreFront, DocBuilder, DocBuilder Pro, DocStream, EDOX, the EFI logo, Electronics For Imaging, Fabrivu, Fiery, the Fiery logo, Fiery Driven, the Fiery Driven logo, Inkware, Jetrion, MicroPress, OneFlow, PressVu, PrintIntellect, PrinterSite, PrintFlow, PrintMe, PrintSmith Site, Prograph, RIP-While-Print, Ultravu and VUTEk are registered trademarks of Electronics For Imaging, Inc. in the U.S. Patent and Trademark Office and/or certain other foreign jurisdictions. BestColor is a registered trademark of Electronics For Imaging GmbH in the U.S. Patent and Trademark Office.

AutoCal, Balance, BioWare, ColorPASS, EFI, EFI Pace, Estimate, Fast-4, Fiery Link, Fiery Prints, Fiery Spark, the Fiery Prints logo, FreeForm, Hagen, Logic, Printcafe, PrintSmith, Print to Win, PSI, PSI Flexo, RIPChips, Screenproof, SendMe, Splash, Spot-On, UltraTex, UV Series 50, VisualCal and WebTools are trademarks of Electronics For Imaging, Inc. Best, the Best logo, Colorproof, PhotoXposure, Remoteproof, and Screenproof are trademarks of Electronics For Imaging GmbH.

All other terms and product names may be trademarks or registered trademarks of their respective owners, and are hereby acknowledged.
© 2009 Electronics for Imaging