

How-To:

Create a Workflow using Enfocus Smart Variables



How-To: Create a Workflow using Enfocus Smart Variables

Feature Overview

Fiery® JobFlow integrates Enfocus Smart Variables in the Preflight and Correct modules. Enfocus PitStop Pro 12 creates Variable Sets that are applicable to selected Preflight profiles or Smart Action Lists, making it easier for the user to create advanced workflows to streamline print production.

Customer Benefits

- Smart Preflight and Smart Action Lists employs Variable Sets and gives users a versatile way to preflight and prepare files to match specific production requirements without imposing predefined checks, corrections and modifications.
- Users can quickly and easily add newly created Enfocus resources to JobFlow for use in workflows.

Objectives of this Exercise

- Add resources to Fiery JobFlow server

Additional Resources

If you would like to learn more about Fiery product features, EFI has created interactive online courses designed to enhance Fiery product knowledge and help increase performance. For complete list of the online courses we offer, go to the [Fiery eLearning](#) web page.

Before you begin

- Have Fiery JobFlow 2.0 or above installed and running.
- Have the URL or IP address and admin login information for your JobFlow server.
- Have the sample file **FGS_Letter_Template_LTR.pdf** or **FGS_Letter_Template_A4.pdf** available for use in this exercise.
- Have the Enfocus Action Lists (.eal) and Variable Set (.evs) files available for use in this exercise.
 - JobFlow example - Static Action List - Add Watermark.eal
 - Job Flow example - Smart Action List – Add Watermark.eal
 - JobFlow Variable Set Example #1.evs
 - JobFlow Variable Set Example #2.evs

The provided sample files will do the following:

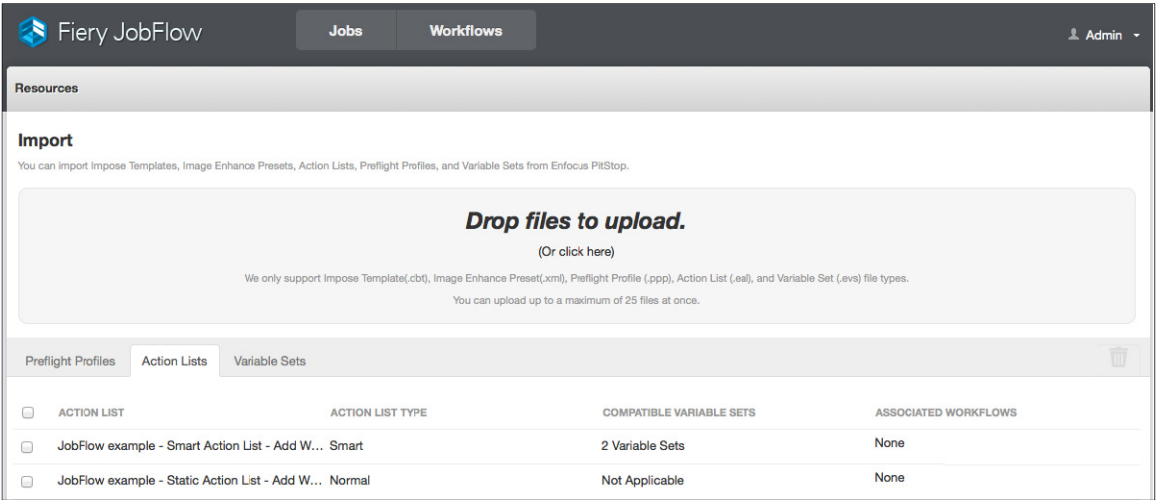


Note:

The Action List uses variable text and places it in the middle of the page as red 72 point type.

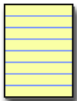
The Smart Action List is designed as a sample to illustrate the usage of variables within Action Lists.

How-To: Create a Workflow using Enfocus Smart Variables



Import Action Lists and Variable Sets created with Enfocus PitStop

1. Log in as a user with administrator rights to your Fieri JobFlow server from your browser.
2. In Admin settings, select **Resources**.
3. Locate the provided sample Enfocus PitStop files and drag and drop the file(s) to upload or use the **(or click here)** to browse for the files.
 - a. JobFlow example - Static Action List - Add Watermark (eal)
 - b. Job Flow example - Smart Action List – Add Watermark (eal)
 - c. JobFlow Variable Set Example #1 (evs)
 - d. JobFlow Variable Set Example #2 (evs)
4. When the files have been uploaded, select **Continue**.
5. The resources are displayed by type.
6. JobFlow workflows can now use these added resources in the Preflight or Correct modules.

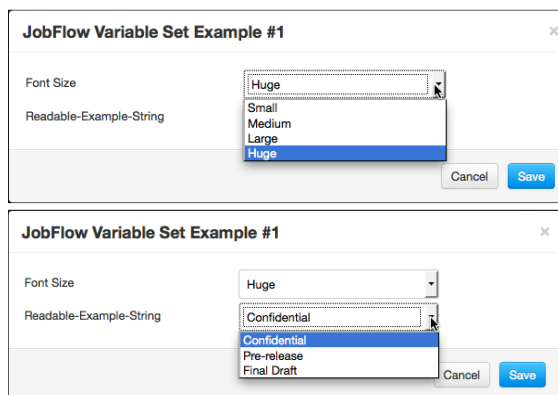
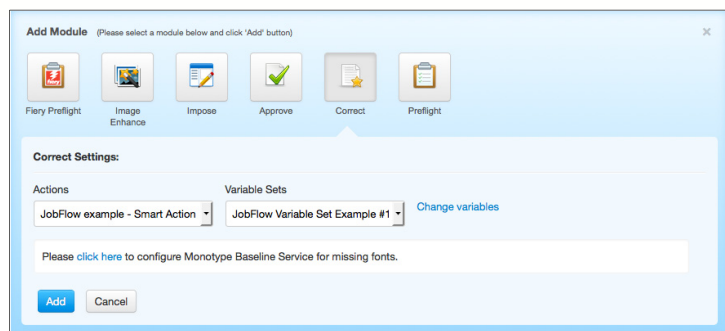


Note: Fieri JobFlow supports Impose Template (.dbt), Image Enhance Preset (.xml), Preflight Profile (.ppp), Action List (.eal) and Variable Set (.evs) file types. Up to 25 files can be uploaded at once.

Uploaded resources are displayed according to the resource type.

7. In the next section, a new workflow will be created to apply these action lists.

How-To: Create a Workflow using Enfocus Smart Variables



Creating a Workflow with Variables

1. Log in as a user with administrator rights to your Fiery JobFlow server from your browser.
2. Select **Workflows** and the **+ Create New Workflow** icon.
3. Enter a name for your workflow. For this example, enter **Sample Smart Actions** and select **Create**.
4. The default location for the Input Sources module is a JobFlow SmartFolder. To change the location, click on the **pencil** icon in the Input Source module and click on the dropdown menu to select from all available locations defined by the JobFlow administrator, grouped by location type.



Note:

Each workflow can have multiple input source locations assigned for job submission. Supported options include SMB shared folder, FTP, sFTP, one or multiple Dropbox accounts or the default JobFlow SmartFolder.

SmartFolder is a folder acting as an input queue for job submission to a specific workflow. Each SmartFolder is created under the root folder called "SmartFolders" on the JobFlow server.

5. Select the **+icon** below the Convert module. JobFlow will display a list of available modules.
6. Select the **+Add Module** icon to add another module and select **Correct**. For this example, select **Add Penguins** from the Action List and **Add**.
 1. Select the **+Add Module** icon to add another module and select **Correct**.
 - a. For this example, select the Smart Action added to Resources previously. For this example select **JobFlow example – Smart Action List – Add Watermark**.
 - b. Select the appropriate Variable Sets. For this example, select JobFlow Variable Set Example #1.
 - c. Select **Change Variables**.
 - i. Select an option for **Font Size** from the dropdown menu. For this example, select **Huge**.
 - ii. Select an option for **Readable-example-string**. For this example, select **Confidential**.
 - d. Select **Save** and **Add**.

How-To: Create a Workflow using Enfocus Smart Variables



Note:

Correct allows you to apply Enfocus PitStop Actions to incoming jobs. Actions added to a workflow are used to automatically apply modifications to the file. A description of each Action can be viewed by hovering on the Action name from the Actions menu. For more information on these options, reference the Enfocus website.

2. Select the **+ Rule** icon to define the rules for this action.
3. Select **Add** to create a new rule.
4. For this example, select If **Fails** then **Send Email** to **JanetSmith** or an operator user you created and **Save**.

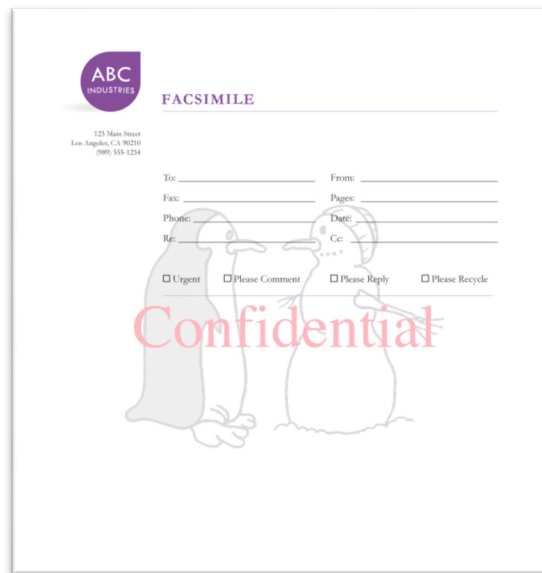


Note:

When selecting the option for **If Correct Fails** or **If Correct passes**, JobFlow will send the Enfocus preflight report as an attached PDF to the email.

If the job fails, a link to view the report is also available in the Jobs view.

5. Users can now submit jobs to the new workflow via the input source location(s) defined for this workflow.
6. Submit the sample file **FGS_Letter_Template_LTR.pdf** or **FGS_Letter_Template_A4.pdf** and view the printed document.





EFI fuels success.

From Fiery to super wide inkjet, from the lowest cost per label to the most automated business processes, EFI has everything your company needs to succeed. Visit www.efi.com or call 650-357-3500 for more information.



The APPS logo, AutoCal, Auto-Count, Balance, Best, the Best logo, BESTColor, BioVu, BioWare, ColorPASS, Colorproof, ColorWise, Command WorkStation, CopyNet, Cretachrom, Cretaprint, the Cretaprint logo, Cretaprinter, Cretaroller, DockNet, Digital StoreFront, DocBuilder, DocBuilder Pro, DocStream, DSFdesign Studio, Dynamic Wedge, EDOX, EFI, the EFI logo, Electronics For Imaging, Entrac, EPCount, EPPPhoto, EPRegister, EPStatus, Estimate, ExpressPay, Fabrivu, Fast-4, Fiery, the Fiery logo, Fiery Driven, the Fiery Driven logo, Fiery JobFlow, Fiery JobMaster, Fiery Link, Fiery Prints, the Fiery Prints logo, Fiery Spark, FreeForm, Hagen, Inkintensity, Inkware, Jetrion, the Jetrion logo, LapNet, Logic, MiniNet, Monarch, MicroPress, OneFlow, Pace, PhotoXposure, Printcafe, PressVu, PrinterSite, PrintFlow, PrintMe, the PrintMe logo, PrintSmith, PrintSmith Site, Printstream, Print to Win, Prograph, PSI, PSI Flexo, Radius, Rastek, the Rastek logo, Remoteproof, RIPChips, RIP-While-Print, Screenproof, SendMe, Sincolor, Splash, Spot-On, TrackNet, UltraPress, Ultraflex, UltraVu, UV Series 50, VisualCal, VUTEK, the VUTEK logo, and WebTools are trademarks of Electronics For Imaging, Inc. and/or its wholly owned subsidiaries in the U.S. and/or certain other countries.