

# How-To:

## Create a Workflow using Fiery Presets



# How-To: Create a Workflow using Fiery Presets

## Feature Overview

Fiery® JobFlow honors the Fiery Server Presets and Image Enhance Visual Editor Presets from your connected Fiery or Fiery Central server.

Fiery Presets and Image Enhance Visual Editor presets allow you to define and save commonly used Job Properties (JP) settings and image corrections that are applied when a job is being processed. The purpose of this capability is to avoid repetitive set-up tasks and share the presets with all Fiery server users for future job processing.

## Customer Benefits

- Save time and reduce errors by sending PDF files that use server presets with defined JP settings to JobFlow workflows for output to a Fiery or Fiery Central server.

## Objectives of the Exercise

- Create a Fiery Server Preset for booklet imposition.
- Create a new Fiery JobFlow workflow.
- Apply the Image Enhance module to the workflow.
- Apply a Fiery Server Preset to the Output module of the workflow.
- Create and assign a rule to the Output module.

## Additional Resources

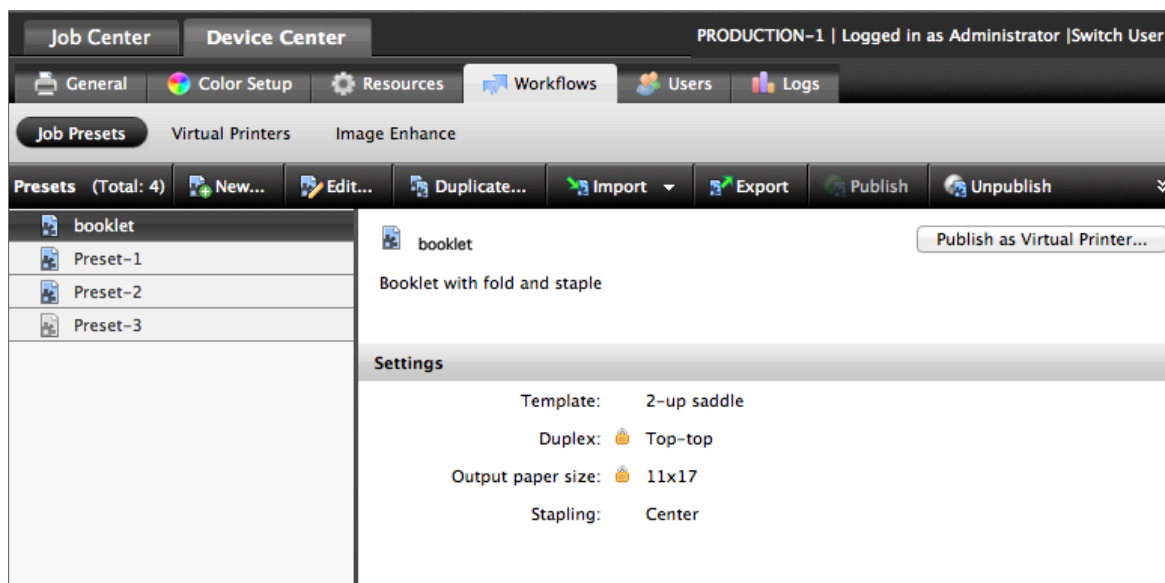
If you would like to learn more about Fiery product features, EFI has created interactive online courses designed to enhance Fiery product knowledge and help increase performance. For complete list of the online courses we offer, go to the [Fiery eLearning](#) web page.

## Before you begin

- Have Fiery Command WorkStation 5.7 or above installed on the Fiery JobFlow with Fiery Impose license activated on the Command WorkStation.
- Have Fiery JobFlow version 2.0 or above installed.
- Place the following file in a location accessible for Fiery JobFlow server.
  - **FGS\_spread\_booklet\_LTR.pdf** or **FGS\_spread\_booklet\_A4.pdf**

**Note:**

Fiery JobFlow retrieves all saved Fiery Server Presets and Image Enhance Visual Editor presets from the connected Fiery server. These presets are available to each newly created workflow or when editing an existing workflow.



## Create a Fiery Server Preset for Booklet Imposition

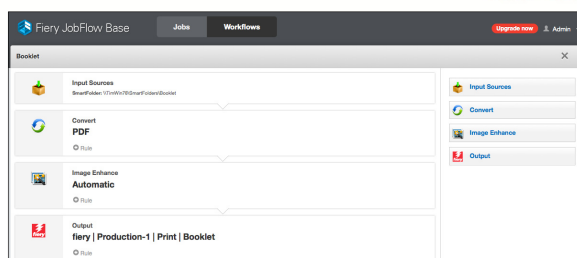
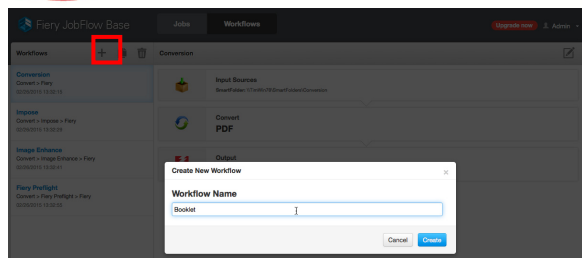
1. Log in as Administrator to your Fiery server in Command WorkStation.
2. In the Command WorkStation menu, select **Go> Job Presets**
3. Select **New**.
4. Enter a preset name and description. For this example, enter **Booklet**.
5. **Description** allows for additional preset characteristics to be noted. Be as descriptive as possible to outline how the documents will output using this preset.
6. Select Job Properties **Define...** to open the Job Properties options.
7. In the **Layout** tab, select **Impose**. In the Templates dropdown menu, select **2-upSaddle**.
8. In the **Media** tab, select **11x17** or **A3** for the **Output Paper Size**.
9. In the **Finishing** tab select the appropriate **Folding** and **Stapling** options for your printer. Note options will vary with your print device.
10. Select **OK** when you have defined all finishing options.
11. Select **OK** to complete saving the new preset.



### Note:

Fiery JobFlow will retrieve all saved Fiery Server Presets from the connected Fiery Server. Anytime a workflow is created or edited, the available Fiery presets are updated.

## How-To: Create a Workflow using Fiery Presets



## Create a JobFlow Workflow to use Fiery Presets

1. Log in as a user with administrator right to your Fiery JobFlow server from your browser.
2. Select **Workflows** and select the **+ Create New Workflow** icon.
3. Enter a name for your workflow. For this example, enter **Booklet** and select **Create**.
4. The default location for the Input Sources module is a JobFlow SmartFolder. To change the default location or add additional locations, click on the **pencil** icon in the Input module. All available locations defined by the JobFlow administrator will be displayed and grouped by location type. Select the desired input source from the dropdown menu.



### Note:

Each workflow is assigned an input source for job submission. Input location options include SMB, FTP, sFTP, one or multiple Dropbox accounts or will use the default JobFlow SmartFolder. SmartFolder is a folder acting as an input queue for job submission to a specific workflow. Each SmartFolder is created under the root folder called "SmartFolders" on the JobFlow server.

5. Select the **+Add** icon sign below the Convert module. Fiery JobFlow will display a list of the available modules.
6. Select the **Image Enhance** module. Fiery Job Flow will display an updated list of all the Fiery server **Image Enhance Visual Editor (IEVE)** saved presets.
7. For this example, select **Automatic** and click on **Add** button.
8. To add Fiery Presets to the workflow, select the **pencil** icon in the **Output** module.
9. In the Output module settings, select the desired Fiery server from the dropdown menu. All available locations defined by the JobFlow administrator are displayed and grouped by location type.
10. For each workflow, the administrator can specify the output location for the job. If it is different than a Fiery or a Fiery Central server, the final PDF file is not printed but saved to the configured alternative location.
11. In the Job presets option, select the arrow icon to see a list of all available presets in the dropdown menu.
12. For this example, select the preset **Booklet** and **Save**.



### Note:

Fiery JobFlow will retrieve all saved Fiery Server Presets from the connected Fiery server. Anytime a workflow is created or edited, the available presets are updated.

When Fiery JobFlow is connected to a Fiery Central server, all Fiery Central Printer Group names will be available to select.

13. Select the **+ Rule** icon to define the rules for the Output module and select **Add**.

14. For this example, select If **Output Fails** Then **Send Email** To (Select Users) and select an available operator user.

Email notifications are sent from JobFlow to the designated email accounts specified in the global notifications and in the rules used within the workflow modules.



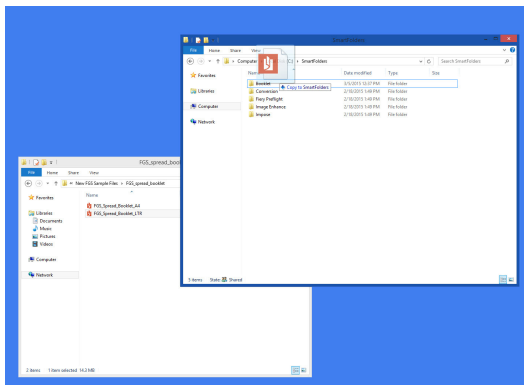
**Note:**

The available email users displayed in the dropdown menu are populated from the list of users created in the Fiery JobFlow User Management

For information on how to create users, see the [How-To Configure Global Notifications](#) guide. The available email users displayed in the dropdown menu are populated from the list of users created in the Fiery JobFlow User Management.

15. Users can now submit jobs to the new workflow.

## How-To: Create a Workflow using Fiery Presets



### Submit a job to the Booklet Workflow

The job submission procedure will vary based on the specified input location(s). In the steps below, the default Smart Folder workflow will be used.

1. Browse on the JobFlow server to locate the created SmartFolder named **Booklet**
2. Locate the file **FGS\_spread\_booklet\_LTR.pdf** or **FGS\_spread\_booklet\_A4.pdf**, and use the drag-and-drop method to place the file in the appropriate **Booklet** SmartFolder.
  - a. If you want to copy the file, use the Control key when you drag-and-drop the file. If you do not use the Control key, you will move the file rather than copy the file.



## EFI fuels success.

From Fiery to super wide inkjet, from the lowest cost per label to the most automated business processes, EFI has everything your company needs to succeed. Visit [www.efi.com](http://www.efi.com) or call 650-357-3500 for more information.



The APPS logo, AutoCal, Auto-Count, Balance, Best, the Best logo, BESTColor, BioVu, BioWare, ColorPASS, Colorproof, ColorWise, Command WorkStation, CopyNet, Cretachrom, Cretaprint, the Cretaprint logo, Cretaprinter, Cretaroller, DockNet, Digital StoreFront, DocBuilder, DocBuilder Pro, DocStream, DSFdesign Studio, Dynamic Wedge, EDOX, EFI, the EFI logo, Electronics For Imaging, Entrac, EPCount, EPPPhoto, EPRegister, EPStatus, Estimate, ExpressPay, Fabrivu, Fast-4, Fiery, the Fiery logo, Fiery Driven, the Fiery Driven logo, Fiery JobFlow, Fiery JobMaster, Fiery Link, Fiery Prints, the Fiery Prints logo, Fiery Spark, FreeForm, Hagen, Inkintensity, Inkware, Jetrion, the Jetrion logo, LapNet, Logic, MiniNet, Monarch, MicroPress, OneFlow, Pace, PhotoXposure, Printcafe, PressVu, PrinterSite, PrintFlow, PrintMe, the PrintMe logo, PrintSmith, PrintSmith Site, Printstream, Print to Win, Prograph, PSI, PSI Flexo, Radius, Rastek, the Rastek logo, Remoteproof, RIPChips, RIP-While-Print, Screenproof, SendMe, Sincolor, Splash, Spot-On, TrackNet, UltraPress, Ultraflex, UltraVu, UV Series 50, VisualCal, VUTEK, the VUTEK logo, and WebTools are trademarks of Electronics For Imaging, Inc. and/or its wholly owned subsidiaries in the U.S. and/or certain other countries.