

How-To:

Prepare and Print a Booklet Using Fiery Impose



How-To: Prepare and Print a Booklet Using Fiery Impose

Feature Overview

Fiery Impose option is a document lay out application that has a flexible and intuitive visual interface that simplifies document preparation and gives operators the tools to achieve superb results with ease. Fiery Impose enables error-free layout at a sheet level.

Customer Benefits

- Increases business profits by producing complex documents with increased customer value added with ease.
- Decreases waste and errors by letting operators know exactly what to expect when printing a document, and what the output will look like when printed.
- Saves time and increases productivity since it takes fewer steps with a flexible drag & drop of pages, saving users precious time.

Objectives of the exercise

- Apply booklet imposition using Fiery Impose to the document.
- Create and save an imposition template for future use.

Additional Resources

If you would like to learn more about Fiery product features, EFI has created interactive online courses designed to enhance Fiery product knowledge and help increase performance. For complete list of the online courses we offer, go to the [Fiery eLearning](#) web page.

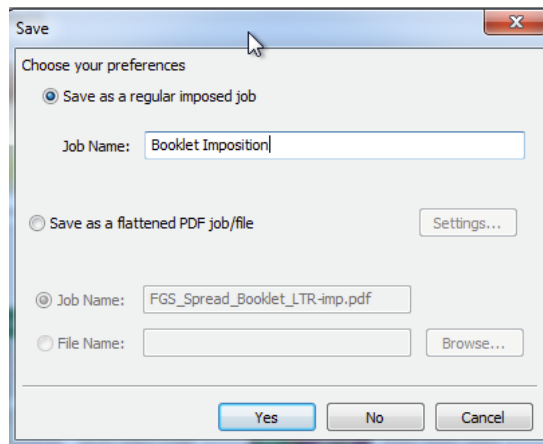
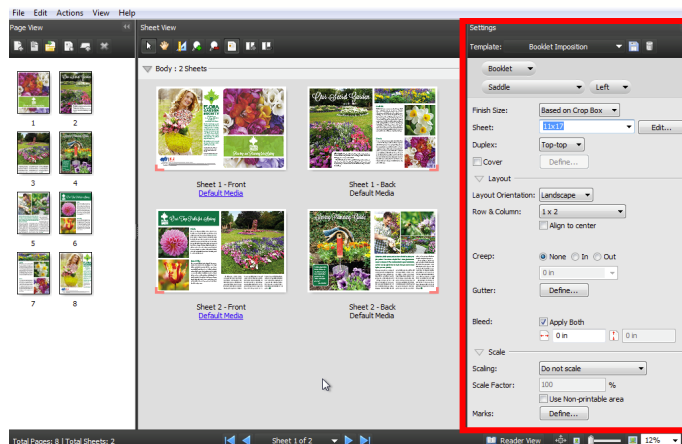
Before you begin

- Have Fiery Command WorkStation 5.5 or above opened and connected to at least one Fiery server, running Fiery FS150/FS150 Pro or above.
- Activate the EFI Impose license on the Command WorkStation client or attach the Fiery Impose Dongle or Fiery Impose-Compose Dongle to the Command WorkStation client.
- Place the sample file: **FGS_spread_booklet_LTR.pdf** or **FGS_spread_booklet_A4.pdf** in the Fiery Held queue. Drag and drop the file to the Command WorkStation Held queue or use the Command WorkStation Import menu option.
- Ensure the printer and Fiery have been calibrated before printing any output.

**Note:**

Each output device will have different procedures for configuring and printing the finished document. Consult the user documentation for your copier and Fiery server that will be used for this How-To Guide.

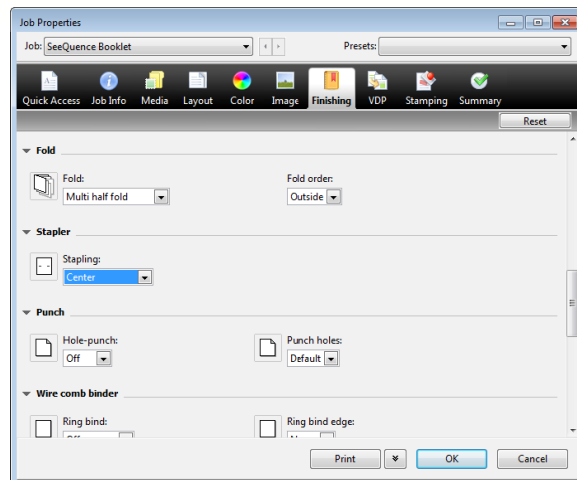
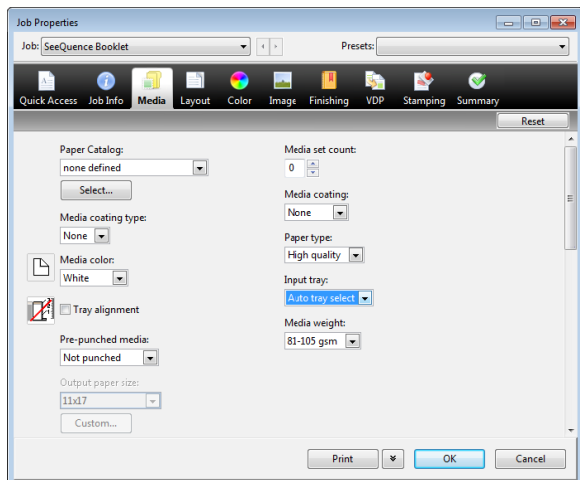
How-To: Prepare and Print a Booklet using Fiery Impose



Creating a Booklet Imposition Template Using Fiery Impose

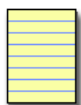
1. Select the file **FGS_Spread_Booklet_LTR.pdf** or **FGS_Spread_Booklet_A4.pdf** in the Command WorkStation Held queue and right-click to select **Impose** from the pop-out menu. Or select the **Impose** Icon from the toolbar if it has been added.
2. In the Impose window, select **Booklet** from the drop down menu for product intent in the Settings pane.
3. Choose **Saddle** and **Left**.
4. Select **11 x 17** or **A3** in the **Sheet** drop down menu.
5. In the **Layout** section, set the following options:
 - a. **Layout Orientation:** Landscape
 - b. **Row & Column:** 1 x 2
6. In the **Scale** section, set the following options:
 - a. **Scaling:** Do not scale
 - b. **Marks:** Select **Define...** and uncheck the **Trim**, **Fold** and **Job Label** Print boxes. Select **OK** to close marks window.
7. Save this layout for future use by selecting the **Save Template** icon next to the Template drop down menu.
8. When the **Save Template** window opens, enter a name for the template. For this example, enter **Booklet Imposition** and select **OK**.
9. The Template menu will display **Booklet Imposition**.
10. Click on the red **X** to exit and save the new imposed job, or select **Exit** from the **File Menu**.
11. Select **Save as regular imposed job**, change the job name to **Booklet**, and select **Yes**. The new job will be saved in the Held queue.
12. In the next section, finishing options will be applied before printing.

How-To: Prepare and Print a Booklet using Fiery Impose



Apply Saddle Stitch Finishing to the Imposed Job

1. Select your new job, **Booklet** in the Held queue and right-click to select **Properties**.
2. In the Job Properties window, select the **Media** tab and specify the media appropriate for your workflow.
3. Select the **Finishing** tab and select the appropriate **Folding**, **Stapling**, **Page Order** and **Output Tray** for your printer/copier. The finishing options will vary with device. Select **Print**.



Note:

The Imposition template that was previously saved can be applied to Virtual Printers, Hot Folders or Job Properties improving the workflow of similar jobs in the future.



EFI fuels success.

From Fiery to super wide inkjet, from the lowest cost per label to the most automated business processes, EFI has everything your company needs to succeed. Visit www.efi.com or call 650-357-3500 for more information.



The APPS logo, AutoCal, Auto-Count, Balance, Best, the Best logo, BESTColor, BioVu, BioWare, ColorPASS, Colorproof, ColorWise, Command WorkStation, CopyNet, Cretachrom, Cretaprint, the Cretaprint logo, Cretaprinter, Cretaroller, DockNet, Digital StoreFront, DocBuilder, DocBuilder Pro, DocStream, DSFdesign Studio, Dynamic Wedge, EDOX, EFI, the EFI logo, Electronics For Imaging, Entrac, EPCount, EPPPhoto, EPRegister, EPStatus, Estimate, ExpressPay, Fabrivu, Fast-4, Fiery, the Fiery logo, Fiery Driven, the Fiery Driven logo, Fiery JobFlow, Fiery JobMaster, Fiery Link, Fiery Prints, the Fiery Prints logo, Fiery Spark, FreeForm, Hagen, Inkintensity, Inkware, Jetrion, the Jetrion logo, LapNet, Logic, MiniNet, Monarch, MicroPress, OneFlow, Pace, PhotoXposure, Printcafe, PressVu, PrinterSite, PrintFlow, PrintMe, the PrintMe logo, PrintSmith, PrintSmith Site, Printstream, Print to Win, Prograph, PSI, PSI Flexo, Radius, Rastek, the Rastek logo, Remoteproof, RIPChips, RIP-While-Print, Screenproof, SendMe, Sincolor, Splash, Spot-On, TrackNet, UltraPress, Ultraflex, UltraVu, UV Series 50, VisualCal, VUTEK, the VUTEK logo, and WebTools are trademarks of Electronics For Imaging, Inc. and/or its wholly owned subsidiaries in the U.S. and/or certain other countries.