

How-To:

Prepare a Booklet



How-To Prepare a Booklet

Feature Overview

Fiery's Booklet Maker is the driver-based imposition tool that allows users to print multiple pages of a print job from any application in a booklet style without the need for more advanced imposition programs.

Booklet Maker allows users to intuitively navigate and select the appropriate booklet type and sub-options for the job through an intuitive graphic wizard type workflow. It launches from both the Job Properties and the EFI Driver.

The Fiery Booklet Maker is the imposition tool in Job Properties that allows users to print multiple pages of a print job, from any application, in a booklet style — without the need for more advanced imposition programs. Booklet Maker v4.0 provides a visual and interactive way to specify the page number of the source document for cover paginations, enabling it to correlate the correct page numbers with the correct cover pages.

Customer Benefits

- Produces sophisticated results with simple operation.
- Intuitive UI minimizes training requirements. A graphical and intuitive wizard-based interface guides the user in setting up professional-looking booklets more quickly and with fewer errors.
- Reduces costs by creating booklets in-house, eliminating the need to outsource.

Objectives of Exercise

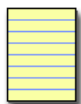
- Prepare and print a Booklet using Booklet Maker within Job Properties either from Command WorkStation or the Printer Driver.

Additional Resources

If you would like to learn more about Fiery product features, EFI has created interactive online courses designed to enhance Fiery product knowledge and help increase performance. For a complete list of the online courses we offer, go to the [Fiery eLearning](#) web page.

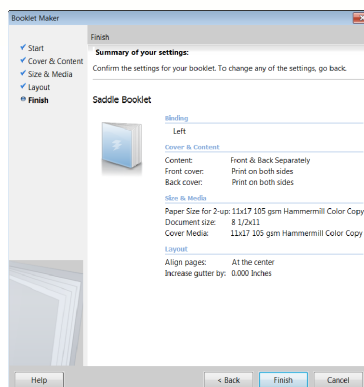
Before you begin

- Have Command WorkStation 5.5 or above opened and connected to at least one Fiery server, running Fiery FS150/FS150 Pro or above.
- Activate the Fiery Impose license on the Command WorkStation client or attach the Fiery Impose dongle to the Fiery Command WorkStation client.
- Place the sample file: **FGS_booklet_LTR.pdf** or **FGS_booklet_A4.pdf** in the Fiery Held queue. Drag and drop the file to the Command WorkStation Held queue or use the Command WorkStation Import menu option.
- Ensure the printer and Fiery have been calibrated before printing any output.



Note:

Each output device will have different procedures for configuring and printing the finished document. Consult the user documentation for the copier and Fiery that will be used for this How-To Guide.



Create a Saddle Stitch Booklet Layout Using the Booklet Maker Wizard

1. Select the file **FGS_booklet_LTR.pdf** or **FGS_booklet_A4.pdf** in the Held queue, right-click and select **Properties**.
2. In the Job Properties window, select the **Layout** tab and then **Booklet**.
3. To create a booklet layout using the Booklet Maker Wizard, select **Launch Wizard...**
4. Select the **Booklet Type** to create. For this example select **Saddle**, **Left** and **Next** to continue.
5. For **Cover and Content**, select **Front & Back Separately** from Document. For the Outside Covers, keep the defaults settings for **Print Front Cover** on Outside and **Print Back Cover** on Outside, and for the Inside Cover, check to enable Inside **Print Front Cover** and Inside **Print Back Cover** and **Next**.



Note:

Front & Back Separately allows user to specify Outside options (print Front Cover, Print Spine, Print Back Cover) and then Inside options (print Front Cover, Print Back Cover).

Front/Back Together allows user to specify to Print Covers, Outside (Automatically selected/enabled) and Inside (enable to print or not).

6. For **Size and Media**, select the **Size of the paper for Body**. For this example, select **11x17** or **A3** or select an appropriate Paper Catalog media for the Page Size for 2-up.
7. **Select the size of the paper for cover**. For this example select **Define Cover** and select **11x17** or **A3** or select an appropriate Paper Catalog media.
8. In **Layout**, select **At the center** for Page Alignment, and **Next**.
9. Review the settings and **Finish** to complete the Booklet Maker wizard.
10. If the output device supports a Saddle Stitch finisher, select the **Finishing** tab.
11. Select the **Folding**, **Stapler mode**, **Fold order** and **Output delivery** options that will correctly create a folded and stapled booklet. Each engine will have its own unique settings to correctly complete the booklet.
12. To correctly print this booklet, Composite Overprint should be enabled. Select the Color tab and ensure **Composite Overprint** is enabled.
13. Apply any other **Job Properties** settings that are desired such as **Expert Color** settings.
14. If you want to save these settings for future use, save as a Preset. For more information on how to save a server preset, see the How-To Job Management in Command WorkStation.
15. Select **Print** from the Print button drop-down menu.

Completed Saddle Stitch Booklet





EFI fuels success.

From Fiery to super wide inkjet, from the lowest cost per label to the most automated business processes, EFI has everything your company needs to succeed. Visit www.efi.com or call 650-357-3500 for more information.



The APPS logo, AutoCal, Auto-Count, Balance, Best, the Best logo, BESTColor, BioVu, BioWare, ColorPASS, Colorproof, ColorWise, Command WorkStation, CopyNet, Cretachrom, Cretaprint, the Cretaprint logo, Cretaprinter, Cretaroller, DockNet, Digital StoreFront, DocBuilder, DocBuilder Pro, DocStream, DSFdesign Studio, Dynamic Wedge, EDOX, EFI, the EFI logo, Electronics For Imaging, Entrac, EPCount, EPPhoto, EPRegister, EPStatus, Estimate, ExpressPay, Fabrivu, Fast-4, Fiery, the Fiery logo, Fiery Driven, the Fiery Driven logo, Fiery JobFlow, Fiery JobMaster, Fiery Link, Fiery Prints, the Fiery Prints logo, Fiery Spark, FreeForm, Hagen, Inkintensity, Inkware, Jetrion, the Jetrion logo, LapNet, Logic, MiniNet, Monarch, MicroPress, OneFlow, Pace, PhotoXposure, Printcafe, PressVu, PrinterSite, PrintFlow, PrintMe, the PrintMe logo, PrintSmith, PrintSmith Site, Printstream, Print to Win, Prograph, PSI, PSI Flexo, Radius, Rastek, the Rastek logo, Remoteproof, RIPChips, RIP-While-Print, Screenproof, SendMe, Sincolor, Splash, Spot-On, TrackNet, UltraPress, Ultraflex, UltraVu, UV Series 50, VisualCal, VUTEK, the VUTEK logo, and WebTools are trademarks of Electronics For Imaging, Inc. and/or its wholly owned subsidiaries in the U.S. and/or certain other countries.