

How-To:

Optimize Color Quality of Black and White Documents



How-To: Optimize Color Quality Black and White of Documents

Feature Overview

Learn how to produce great grayscale quality documents by taking advantage of the state-of-the-art Fiery reproduction capabilities including the Grayscale Composite Overprint feature.

The Grayscale Composite Overprint feature allows overprints, drop shadows and transparencies in color print jobs to render accurately even when printing in grayscale mode.

This unique Fiery feature works for both CPSI and APPE interpreters.

Customer Benefits

- Guarantees black-and-white output that matches the design on the first print, even if the designer has used techniques such as overprinting.
- Saves cost while producing black-and-white output and preserves the appearance of complex design elements.
- Composite Overprint ensures an accurate print of a document including spot color overprints.

Objectives of the Exercise

- Print the job in color
- Configure the Job Properties for Grayscale and Composite Overprint
- Print the job

Additional Resources

If you would like to learn more about Fiery product features, EFI has created interactive online courses designed to enhance Fiery product knowledge and help increase performance. For complete list of the online courses we offer, go to the [Fiery eLearning](#) web page.

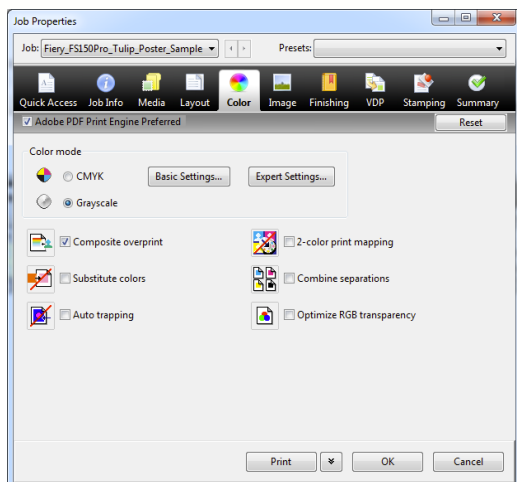
Before you begin

- Install Fiery Command WorkStation 5.6 or above on either a Windows or Macintosh client and connected to a Fiery server, running Fiery FS150/FS150 Pro or above.
- Have the sample file: **Fiery_FS150Pro_Tulip_Poster_Sample_TBL.pdf** or **Fiery_FS150Pro_Tulip_Poster_Sample_A3.pdf** in the Fiery Held queue. Drag and drop the file to the Command WorkStation Held queue or use the Command WorkStation Import menu option.
- Ensure the printer and Fiery have been calibrated before printing any output.

**Note:**

Each output device will have different procedures for configuring and printing the finished document. Consult the user documentation for the copier and Fiery server that will be used for this How-To Guide.

How-To: Optimize Color Quality Black and White of Documents



Apply Optimized Color Settings in Job Properties

1. Select the file **Fiery_FS150Pro_Tulip_Poster_Sample_TBL.pdf** or **Fiery_FS150Pro_Tulip_Poster_Sample_A3.pdf** and right-click to select **Print** and hold from the pop-out menu.
2. Collect the output to compare with the final print at the end of this exercise.
3. Locate the file: **Fiery_FS150Pro_Tulip_Poster_Sample_TBL.pdf** or **Fiery_FS150Pro_Tulip_Poster_Sample_A3.pdf** in the Held queue and select **Job Properties**.
4. Select the **Color** tab.
 - a. Check to enable **Grayscale**.
 - b. Check to verify **Composite Overprint** is enabled. This is the default selection.
5. Select **Print** to submit the job to the output device.
6. Collect the output and compare with the first print sample.



EFI fuels success.

From Fiery to super wide inkjet, from the lowest cost per label to the most automated business processes, EFI has everything your company needs to succeed. Visit www.efi.com or call 650-357-3500 for more information.



The APPS logo, AutoCal, Auto-Count, Balance, Best, the Best logo, BESTColor, BioVu, BioWare, ColorPASS, Colorproof, ColorWise, Command WorkStation, CopyNet, Cretachrom, Cretaprint, the Cretaprint logo, Cretaprinter, Cretaroller, DockNet, Digital StoreFront, DocBuilder, DocBuilder Pro, DocStream, DSFdesign Studio, Dynamic Wedge, EDOX, EFI, the EFI logo, Electronics For Imaging, Entrac, EPCount, EPPPhoto, EPRegister, EPStatus, Estimate, ExpressPay, Fabrivu, Fast-4, Fiery, the Fiery logo, Fiery Driven, the Fiery Driven logo, Fiery JobFlow, Fiery JobMaster, Fiery Link, Fiery Prints, the Fiery Prints logo, Fiery Spark, FreeForm, Hagen, Inkintensity, Inkware, Jetrion, the Jetrion logo, LapNet, Logic, MiniNet, Monarch, MicroPress, OneFlow, Pace, PhotoXposure, Printcafe, PressVu, PrinterSite, PrintFlow, PrintMe, the PrintMe logo, PrintSmith, PrintSmith Site, Printstream, Print to Win, Prograph, PSI, PSI Flexo, Radius, Rastek, the Rastek logo, Remoteproof, RIPChips, RIP-While-Print, Screenproof, SendMe, Sincolor, Splash, Spot-On, TrackNet, UltraPress, Ultraflex, UltraVu, UV Series 50, VisualCal, VUTEK, the VUTEK logo, and WebTools are trademarks of Electronics For Imaging, Inc. and/or its wholly owned subsidiaries in the U.S. and/or certain other countries.