

How-To:

Enable a Native PDF Workflow



How-To: Enable a Native PDF Workflow

Feature Overview

EFI and Adobe have partnered to offer industry-leading print solutions by integrating the Adobe PDF Print Engine v3 (APPE) rendering technology into the Fiery servers. This support offers users a choice of a native PDF end-to-end workflow and enables them to improve the consistency and flexibility of the printed output from design to print.

The APPE interpreter support is offered in conjunction with the conventional Fiery CPSI (PostScript interpreter). This dual RIP configuration is offered as standard for Fiery servers shipping with Fiery system version System 9 R2 and above. This feature reinforces that Fiery solutions' open platform technology supports the widest variety of file formats and workflows used in the printing industry today. It also guarantees workflow interoperability. In addition, this support gives users the choice to process PDF files using the APPE or conventional PostScript RIP with a simple Select of the mouse and to meet the specific requirements of a printing environments or job.

Customer Benefits

- Guarantees consistency in preview and print by supporting native PDF workflow from creation to final output.
- Saves time by eliminating the need to convert or flatten content prior to rendering.
- Uses the same jobs for offset, digital and VDP, allowing the same PDF print job to have a consistent output among print devices.

Objectives of Exercise

- Enable the native PDF workflow on the Fiery Server
- Understand the Server setup options available for the APPE Interpreter
- Submit a print job utilizing APPE
- Configure the Fiery Job Log to show the interpreter, either PostScript or the Adobe PDF Print Engine (APPE) used to process the print job

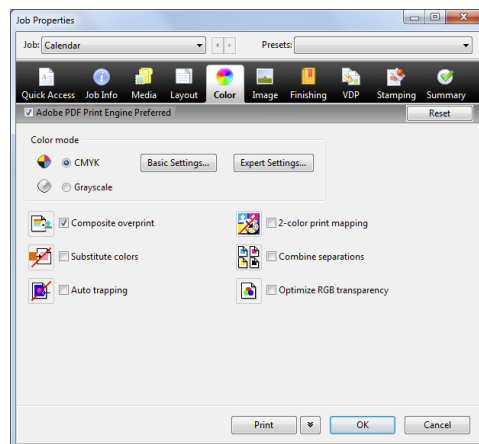
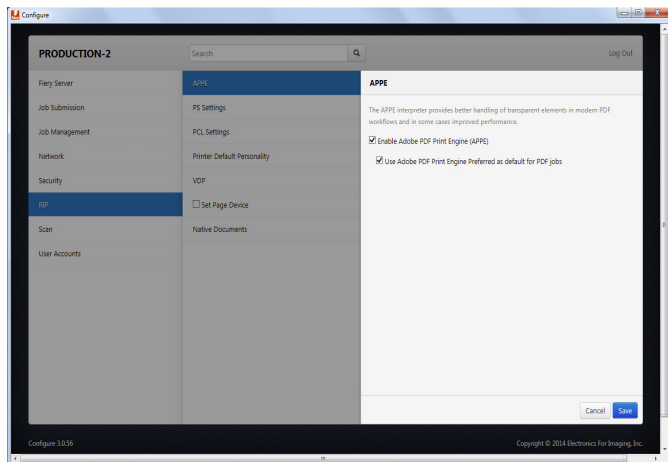
Additional Resources

If you would like to learn more about Fiery product features, EFI has created interactive online courses designed to enhance Fiery product knowledge and help increase performance. For a complete list of the online courses we offer, go to the [Fiery eLearning](#) web page.

Before you begin

- Have Fiery Command WorkStation 5.5 or above opened and connected to at least one Fiery server, running Fiery FS150 Pro or above.
- Log into Fiery Command WorkStation as an Administrator.
- Place the sample file **FGS_gardenposter_11x17.pdf** or **FGS_gardenposter_A3.pdf** in the Fiery Held queue. Drag and drop the file to the Command WorkStation Held queue or use the Command WorkStation Import menu option.
- Ensure the printer and Fiery server have been calibrated before printing any output.

How-To: Enable a Native PDF Workflow



Enable a Native PDF Workflow and Submit a Job to Use APPE

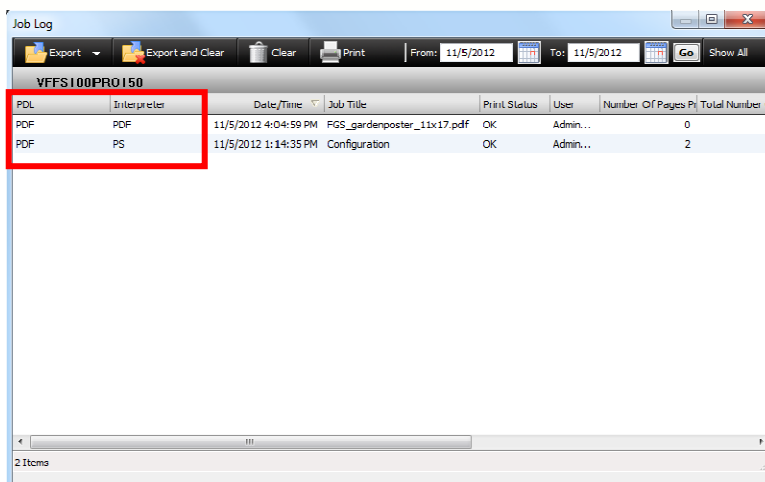
The APPE interpreter is enabled by default in Fiery FS150 Pro servers and above. To locate APPE settings in the Server Configuration, follow the steps 1 through 7:

1. In Command WorkStation under the Go menu, select **Server Configuration**.
2. Select the **Configuration** button in the lower right side.
3. Select **RIP**.
4. In the RIP menu, select APPE to view the options.
5. The option **Enable Adobe PDF Print Engine (APPE)** is already selected and enabled by default.
6. (Optional) If your workflow is predominately PDF, you may also enable the **Use Adobe PDF Print Engine Preferred as default for PDF jobs**. The Fiery Server gives you the option of processing files using the Adobe PDF Print Engine method (APPE) on a job-by-job basis, or by enabling APPE as the default rendering for all PDF's.
7. Select **Save** to apply, and **Restart**. Command WorkStation will automatically restart after the reboot completes.
8. Select the file **FGS_gardenposter_11x17.pdf** or **FGS_gardenposter_A3.pdf** in the Command WorkStation Held queue and right-click to select **Properties**.
9. Select any job properties tab and check to enable **Adobe PDF Print Engine Preferred**.



Note: If you checked the: **Use Adobe PDF Print Engine Preferred as default for PDF jobs** box in the Server Configuration procedure, this option will already be checked.

10. Since this job contains overprints, Composite Overprint is required. Select the **Color** tab to see that **Composite overprint is enabled by default**.
11. Set any additional Job Properties as needed for your media workflow, and select **Print**.



PDL	Interpreter	Date/Time	Job Title	Print Status	User	Number Of Pages Pl	Total Number C
PDF	PDF	11/5/2012 4:04:59 PM	FGS_gardenposter_11x17.pdf	OK	Admin...	0	
PDF	PS	11/5/2012 1:14:35 PM	Configuration	OK	Admin...	2	

Enable the Interpreter Column in the Job Log

1. Select **Logs** in the Command WorkStation toolbar.
2. Position the mouse in the column heading, Right-Click to select **Add** and then **Interpreter** and repeat action for **PDL** from the pop-out menu.
3. Check to enable the option **Enable Adobe PDF Print Engine (APPE)**, and select **Apply**.



Note:

You can select anywhere on the column heading to place the selections **Interpreter** and **PDL**.

The **PDL** column will list the file format and the **Interpreter** column will display which interpreter was used to process the job.

EFI fuels success.

From Fiery to super wide inkjet, from the lowest cost per label to the most automated business processes, EFI has everything your company needs to succeed. Visit www.efi.com or call 650-357-3500 for more information.



The APPS logo, AutoCal, Auto-Count, Balance, Best, the Best logo, BESTColor, BioVu, BioWare, ColorPASS, Colorproof, ColorWise, Command WorkStation, CopyNet, Cretachrom, Cretaprint, the Cretaprint logo, Cretaprinter, Cretaroller, DockNet, Digital StoreFront, DocBuilder, DocBuilder Pro, DocStream, DSFdesign Studio, Dynamic Wedge, EDOX, EFI, the EFI logo, Electronics For Imaging, Entrac, EPCount, EPPhoto, EPRegister, EPStatus, Estimate, ExpressPay, Fabrivid, Fast-4, Fiery, the Fiery logo, Fiery Driven, the Fiery Driven logo, Fiery JobFlow, Fiery JobMaster, Fiery Link, Fiery Prints, the Fiery Prints logo, Fiery Spark, FreeForm, Hagen, Inkensity, Inkware, Jetrion, the Jetrion logo, LapNet, Logic, MiniNet, Monarch, MicroPress, OneFlow, Pace, PhotoXposure, Printcafe, PressVu, PrinterSite, PrintFlow, PrintMe, the PrintMe logo, PrintSmith, PrintSmith Site, Printstream, Print to Win, Prograph, PSI, PSI Flexo, Radius, Rastek, the Rastek logo, Remoteproof, RIPchips, RIP-While-Print, Screenproof, SendMe, Sincolor, Splash, Spot-On, TrackNet, UltraPress, Ultraflex, UltraVu, UV Series 50, VisualCal, VUTEK, the VUTEK logo, and WebTools are trademarks of Electronics For Imaging, Inc. and/or its wholly owned subsidiaries in the U.S. and/or certain other countries.