

How-To:

Capture and
Reproduce Spot
Color Accurately



How-To: Capture and Reproduce Spot Colors Accurately

Feature Overview

With Fiery Spot-On, users can achieve the most accurate color matching for logo colors and other spot colors in an automated, application-independent workflow. The feature allows users to manage named colors on the Fiery server, including all PANTONE, HKS, Toyo and DIC libraries. This feature converts named colors for popular color systems directly on the Fiery server to reproduce the best color match considering the output color profile parameters. In addition, operators can custom-create named spot colors.

Adding the optional EFI ES-2000 spectrophotometer adds the ability to “read” or capture colors. The EFI ES-2000 provides precise capture of target colors as colorimetric values, and automatically enters those values within Spot-On.

Customer Benefits

- Reduces iterative manual process to match a color, improving productivity.
- Enables a more accurate color workflow improving overall quality.
- Closely tied to standard color matching systems such as PANTONE providing easy integration of captured colors and PANTONE colors.
- Compatibility among other Fiery Driven™ engines leveraging the PANTONE Calibrated accreditation. Captured colors are saved in L*a*b in order to maintain device independence. Colors can be exported to other Fiery servers where they will be converted to the specific CMYK for the output profile selected.
- Easy to use. No knowledge of color required in order to match any color.

Objectives of the Exercise

- Use the Fiery Command WorkStation Device Center tool, Spot Colors (Spot-On) and the EFI ES-2000 spectrophotometer to capture and create a company's corporate color from a business card.
- Print a sample file with the logo color in the demonstrator's business card.

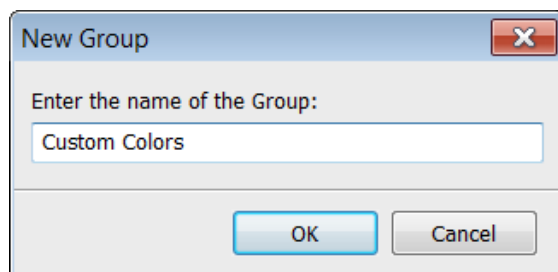
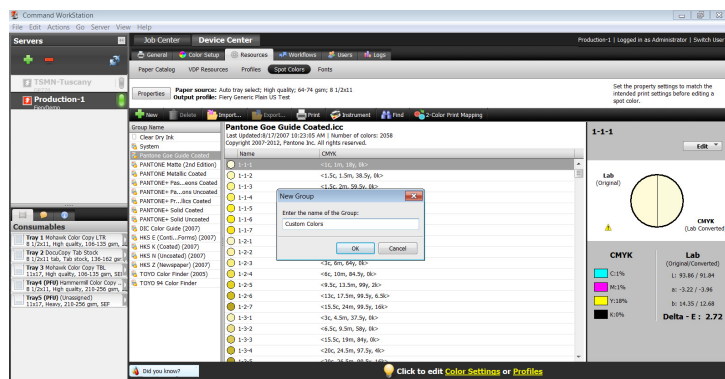
Additional Resources

If you would like to learn more about Fiery product features, EFI has created interactive online courses designed to enhance Fiery product knowledge and help increase performance. For a complete list of the online courses we offer, go to the [Fiery eLearning](#) web page.

Before you begin

- Have Fiery Command WorkStation 5.5 or above opened and connected to at least one Fiery server, running Fiery FS150/FS150 Pro or above.
- Have the EFI ES-2000 or EFI ES-1000 spectrophotometer connected to the Command WorkStation client.
- Optional: Have EFI Fiery Color Profiler Suite software installed with an activated license on the Command WorkStation client.
- Have a business card including a colored logo available.
- Place the sample file: **FGS_Letter_Template_LTR.pdf** or **FGS_Letter_Template_A4.pdf** in the Fiery Held queue. Drag and drop the file to the Command WorkStation Held queue or use the Command WorkStation Import menu option.
- Ensure the print engine and Fiery have been calibrated before printing any output.

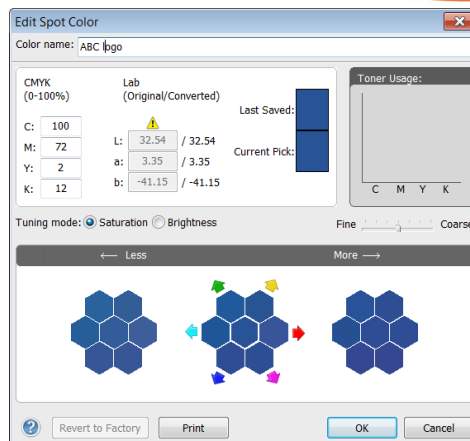
How-To: Capture and Reproduce Spot Colors Accurately



Create a New Spot Color Group

1. In the Command WorkStation menu, select **Go>Spot Colors**. (Opens Device Center, Resources and Spot Colors).
2. Select **Properties**. To define the Output profile that will be used to create the custom spot color, select **Properties**.
3. In the Job Properties window, select the **Color** tab and choose **Expert Settings...**
4. In **Advanced Edit** choose the **Output** tab and select the default output profile that matches the media loaded in the engines and **OK** to exit Advanced Edit and **OK** to close Job Properties.
5. Select the **+ New** and **Group** from the pop-out menu.
6. Enter the name of the Group. For this exercise enter **Custom Colors** and **OK**. (The new group will be listed in the Group Name list on the left-hand side of the Spot Colors window).
7. Select the new group **Custom Colors**. There will not be any colors listed in the new group yet. In the next section you will create a new color to be added to this group.

How-To: Capture and Reproduce Spot Colors Accurately



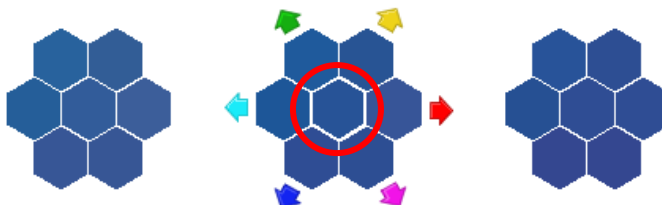
Create a new Spot Color using the EFI ES-2000

1. In this exercise the EFI ES-2000 will import the color values of a color from a business card.
2. Select the **Instrument** icon.
3. The Spectrophotometer calibration window will open. (The EFI ES-2000 must be calibrated before inputting colors into the new Spot Colors group.)
4. Follow the on-screen instructions, placing the EFI ES-2000 in its cradle and click **Calibrate**. The EFI ES-2000 will be calibrated.
5. Select the **+ New** and select **Spot Colors** from the pop-out menu.
6. For this example, enter the Color name: **ABC logo**.

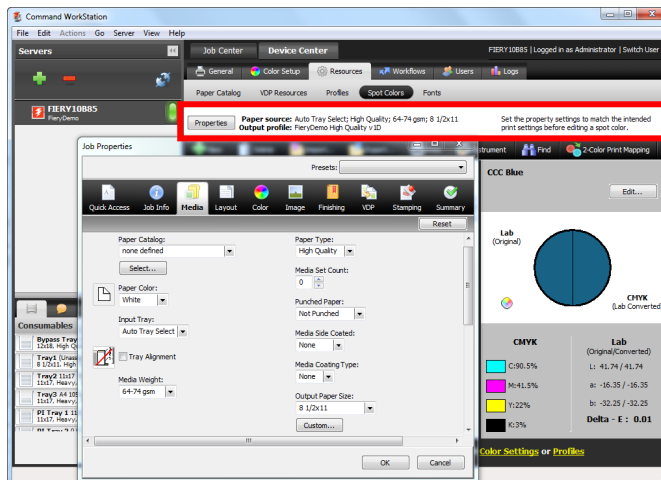


Note: The name of the Spot color is case sensitive and must be exact for proper printing.

7. Remove the EFI ES-2000 from the calibration cradle and place it on the color to import.
8. Press the button on the side of the EFI ES-2000 to import the color values.
9. The color will be displayed in the center of color chart. The color can be refined by selecting one of the other color patches. Select **OK**.



How-To: Capture and Reproduce Spot Colors Accurately



Accessing Job Properties

1. Job Properties can be accessed by selecting the Properties Button. This will open the Job Properties window.
2. Choose the Media tab, Click **Select**.
3. Paper Catalog will open.
4. Select a desired paper type from the Paper Catalog in a **11x17/A3** or **LTR/A4** size. For this exercise select **LTR/A4**. Click **OK**.



Note:

Paper source and Output profile information next to the Properties Button has been updated from the Paper Catalog selection.

Comparing imported color to original color

1. To compare the imported color to the original color of the business card, double-click on **ABC logo** and select **Print** in the **Edit Spot Color** window.

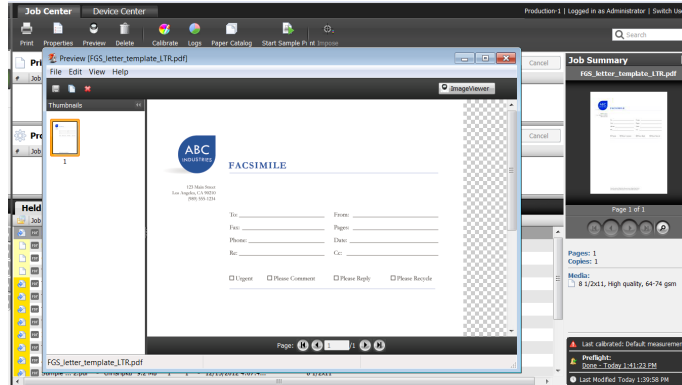


Note:

A Warning dialog box may appear informing you that the Calibration for the media chosen from the Paper Catalog is "outside the specified limits in Calibration preferences". Select Print anyway.

2. When the **Print** dialog window opens, select the Pattern Layout menu and choose either **Color Search Pattern** or **Color Neighbor Pattern**. For this exercise select **Color Search Pattern**.
3. Select **OK** to print the Color Search Pattern.
4. The Printed Successfully dialog opens. Select **OK**.
5. Compare the business card color with the center square of the printout and select a closer match by clicking on the appropriate square (on screen) and re-printing the target. Very little adjustment is necessary.
6. When the desired match is achieved, select **Add Another** to create additional spot color.

How-To: Capture and Reproduce Spot Colors Accurately



Print Letterhead Template With the New Spot Color

1. Select the file **FGS_Letter_Template_LTR.pdf** or **FGS_Letter_Template_A4.pdf** in the Command WorkStation Held queue, right-click and select **Print**.
2. The document will now print the ABC logo as the new created spot color.

EFI fuels success.

From Fiery to super wide inkjet, from the lowest cost per label to the most automated business processes, EFI has everything your company needs to succeed. Visit www.efi.com or call 650-357-3500 for more information.



The APPS logo, AutoCal, Auto-Count, Balance, Best, the Best logo, BESTColor, BioVu, BioWare, ColorPASS, Colorproof, ColorWise, Command WorkStation, CopyNet, Cretachrom, Cretaprint, the Cretaprint logo, Cretaprinter, Cretaroller, DockNet, Digital StoreFront, DocBuilder, DocBuilder Pro, DocStream, DSFdesign Studio, Dynamic Wedge, EDOX, EFI, the EFI logo, Electronics For Imaging, Entrac, EPCount, EPPPhoto, EPRegister, EPStatus, Estimate, ExpressPay, Fabrivu, Fast-4, Fiery, the Fiery logo, Fiery Driven, the Fiery Driven logo, Fiery JobFlow, Fiery JobMaster, Fiery Link, Fiery Prints, the Fiery Prints logo, Fiery Spark, FreeForm, Hagen, Inkintensity, Inkware, Jetrion, the Jetrion logo, LapNet, Logic, MiniNet, Monarch, MicroPress, OneFlow, Pace, PhotoXposure, Printcafe, PressVu, PrinterSite, PrintFlow, PrintMe, the PrintMe logo, PrintSmith, PrintSmith Site, Printstream, Print to Win, Prograph, PSI, PSI Flexo, Radius, Rastek, the Rastek logo, Remoteproof, RIPChips, RIP-While-Print, Screenproof, SendMe, Sincolor, Splash, Spot-On, TrackNet, UltraPress, Ultraflex, UltraVu, UV Series 50, VisualCal, VUTEK, the VUTEK logo, and WebTools are trademarks of Electronics For Imaging, Inc. and/or its wholly owned subsidiaries in the U.S. and/or certain other countries.