



Fiery Workflow Suite **CALENDAR 2016**

January to December 2016

Fiery Workflow Suite



Powerful, Modular, Integrated

Fiery® Workflow Suite has solutions for every stage in the print production process. Modular offerings let you choose what you need now and add more as you grow. You can integrate current production systems by centralizing control of print job management to make existing print assets more scalable and productive. Plus, Fiery Workflow Suite products integrate with each other, with other EFI products and with third-party solutions — for easy implementation, deployment and use.



Job Submission

Facilitate your customers sending jobs to you and enable operators to submit those jobs to the print engine with the correct specifications.

Prepress

Streamline and further automate print workflows to ensure integrity of jobs before going to print to reduce errors and waste.

Makeready

Reduce labor-intensive document preparation with easy-to-use tools in one visual interface.

Output Management

Improve digital print production capacity, turnaround and productivity by centralizing control of print job management across multiple production systems.

Processing

Fiery servers drive printers across all printing environments, deliver amazing precision, RIP with blazing speed, and produce perfect color every time.

Color

Guarantee accurate, consistent and reliable color reproduction at all times.

VDP

Produce new high-margin VDP services that get you and your customers noticed.

Business Management

EFI business management software integrates with Fiery servers.

Watch a video at
fiery.efi.com/FWS

JOB SUBMISSION

EFI Digital
StoreFront
EFI Online
Print Solutions



PREPRESS

Fiery JobFlow
Fiery Graphic
Arts Package,
Premium Edition



MAKEREADY

Fiery JobMaster
Fiery Impose
Fiery Compose



OUTPUT MANAGEMENT

Fiery Central



PROCESSING

Fiery Servers



VDP
Fiery VDP Technology



COLOR
Fiery Color Management
Fiery Color Profiler Suite



Produce More, Adapt to Customer Needs and Grow your Business

To survive in today's market, you need to meet expectations of print buyers for flawless color, quick turnaround on complicated documents and high-quality output on jobs from a wide array of sources – all at competitive prices.

In order to thrive, you need to do more.

To grow your business, offer your customers new services and products as well as convenient communication methods. Exceed customer expectations of value and turnaround time through increased automation that drives down costs and speeds production. Fiery Workflow Suite helps you do all this and more. Produce more from your existing print engines with streamlined and automated workflows; quickly adapt to changing customer demands; and grow with new higher- profit, value-added services.



Produce

Streamlined, configurable workflows reduce touch points to eliminate human error and increase the capacity of your print engines:

- Automate job submission for increased accuracy.
- Use fully visual tools to dynamically preview how job settings affect the finished output.
- Deliver accurate, consistent color.



Adapt

Adapt to changing customer demands with modular offerings that let you choose what you need now and add more as you grow:

- Centralize control of print job management to make existing print assets more scalable and productive.
- Fiery Workflow Suite offerings integrate with each other, and with other EFI products — for easy implementation, deployment and use.



Grow

Add new customers and retain existing ones with top-quality output. Plus, strengthen your competitive capabilities with new value-added services:

- Develop the infrastructure to support personalized campaign management and efficient VDP production.
- Provide an always-open Web-to-Print storefront and new ways to communicate with customers.

JANUARY



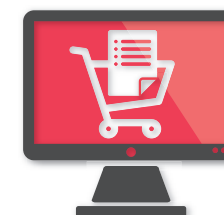
2016

	MONDAY	TUESDAY	WEDNESDAY	THURSDAY	FRIDAY	SATURDAY	SUNDAY
[W52]	DECEMBER 2015 M T W T F S S 01 02 03 04 05 06 07 08 09 10 11 12 13 14 15 16 17 18 19 20 21 22 23 24 25 26 27 28 29 30 31	FEBRUARY 2016 M T W T F S S 01 02 03 04 05 06 07 08 09 10 11 12 13 14 15 16 17 18 19 20 21 22 23 24 25 26 27 28 29			01	02	03
[W1]	04	05	06	07	08	09	10
[W2]	11	12	13	14	15	16	17
[W3]	18	19	20	21	22	23	24
[W4]	25	26	27	28	29	30	31

01

EFI Digital StoreFront Web-to-Print

Digital StoreFront is a dual-purpose Web-to-Print platform designed for the printing industry. The scalable solution includes a robust set of tools, powerful add-on modules, Fiery integration, and flexible deployment options to help you meet your clients' diverse print communication needs for top line growth, while providing a seamless onramp to print production for bottom line growth.



FEBRUARY

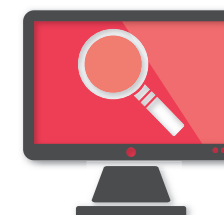
2016

	MONDAY	TUESDAY	WEDNESDAY	THURSDAY	FRIDAY	SATURDAY	SUNDAY
[W5]	01	02	03	04	05	06	07
[W6]	08	09	10	11	12	13	14
[W7]	15	16	17	18	19	20	21
[W8]	22	23	24	25	26	27	28
[W9]	29					JANUARY 2016 M T W T F S S 01 02 03 04 05 06 07 08 09 10 11 12 13 14 15 16 17 18 19 20 21 22 23 24 25 26 27 28 29 30 31	MARCH 2016 M T W T F S S 01 02 03 04 05 06 07 08 09 10 11 12 13 14 15 16 17 18 19 20 21 22 23 24 25 26 27 28 29 30 31

02

Fiery JobFlow

Fiery JobFlow delivers advanced prepress capabilities in a browser-based, cost-effective solution. You can easily configure automated job workflows including PDF conversion, preflight, correcting and editing PDF files, image enhancement, document imposition, approval and job ticketing — saving time, reducing rework and waste, and increasing customer communication.



MARCH

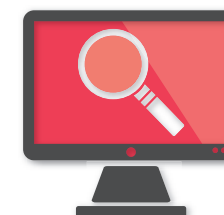
2016

	MONDAY	TUESDAY	WEDNESDAY	THURSDAY	FRIDAY	SATURDAY	SUNDAY
[W9]		01	02	03	04	05	06
[W10]	07	08	09	10	11	12	13
[W11]	14	15	16	17	18	19	20
[W12]	21	22	23	24	25	26	27
[W13]	28	29	30	31		FEBRUARY 2016 M T W T F S S 01 02 03 04 05 06 07 08 09 10 11 12 13 14 15 16 17 18 19 20 21 22 23 24 25 26 27 28 29	APRIL 2016 M T W T F S S 01 02 03 04 05 06 07 08 09 10 11 12 13 14 15 16 17 18 19 20 21 22 23 24 25 26 27 28 29 30

03

Fiery Graphic Arts Package, Premium Edition

Fiery Graphic Arts Package, Premium Edition gives you professional tools for prepress proofing, troubleshooting and preflighting customer files. The integrated solution meets industry standards and ensures successful printing at the expected level of quality control of color output quality.



APRIL

2016

	MONDAY	TUESDAY	WEDNESDAY	THURSDAY	FRIDAY	SATURDAY	SUNDAY
[W13]	MARCH 2016 M T W T F S S 01 02 03 04 05 06 07 08 09 10 11 12 13 14 15 16 17 18 19 20 21 22 23 24 25 26 27 28 29 30 31	MAY 2016 M T W T F S S 01 02 03 04 05 06 07 08 09 10 11 12 13 14 15 16 17 18 19 20 21 22 23 24 25 26 27 28 29 30 31			01	02	03
[W14]	04	05	06	07	08	09	10
[W15]	11	12	13	14	15	16	17
[W16]	18	19	20	21	22	23	24
[W17]	25	26	27	28	29	30	

04

Fiery Impose

Fiery Impose is an intuitive, visual solution designed for production environments to streamline and automate the imposition process. The robust toolset delivers a fast, automated approach to time consuming and tedious tasks that leave operators open to errors.



MAY



2016

	MONDAY	TUESDAY	WEDNESDAY	THURSDAY	FRIDAY	SATURDAY	SUNDAY
[W17]	APRIL 2016 M T W T F S S 01 02 03 04 05 06 07 08 09 10 11 12 13 14 15 16 17 18 19 20 21 22 23 24 25 26 27 28 29 30	JUNE 2016 M T W T F S S 01 02 03 04 05 06 07 08 09 10 11 12 13 14 15 16 17 18 19 20 21 22 23 24 25 26 27 28 29 30					01
[W18]	02	03	04	05	06	07	08
[W19]	09	10	11	12	13	14	15
[W20]	16	17	18	19	20	21	22
[W21]	23	24	25	26	27	28	29
[W22]		30	31				

05

Fiery Compose

The ability to efficiently output a finished document is key in production environments due to the high cost of manual labor to perform time-consuming finishing tasks. A composition tool such as Fiery Compose can optimize setting up all these parameters in the makeready workflow. It also provides a single, powerful interactive user interface that offers visual feedback on all steps in the process.



JUNE



2016

	MONDAY	TUESDAY	WEDNESDAY	THURSDAY	FRIDAY	SATURDAY	SUNDAY
[W22]			01	02	03	04	05
[W23]	06	07	08	09	10	11	12
[W24]	13	14	15	16	17	18	19
[W25]	20	21	22	23	24	25	26
[W26]	27	28	29	30		MAY 2016 M T W T F S S 01 02 03 04 05 06 07 08 09 10 11 12 13 14 15 16 17 18 19 20 21 22 23 24 25 26 27 28 29 30 31	JULY 2016 M T W T F S S 01 02 03 04 05 06 07 08 09 10 11 12 13 14 15 16 17 18 19 20 21 22 23 24 25 26 27 28 29 30 31

06

Fiery JobMaster

The ability to output a finished document is key in production environments due to the high cost of manual labor in time-consuming finishing tasks. Fiery JobMaster makes print operators more productive when performing makeready tasks for complex documents. Intuitive document assembly includes fully visual tab insertion and design, media assignment, page numbering, finishing, scanning and powerful late-stage editing features.



JULY



2016

	MONDAY	TUESDAY	WEDNESDAY	THURSDAY	FRIDAY	SATURDAY	SUNDAY
[W26]	JUNE 2016 M T W T F S S 01 02 03 04 05 06 07 08 09 10 11 12 13 14 15 16 17 18 19 20 21 22 23 24 25 26 27 28 29 30	AUGUST 2016 M T W T F S S 01 02 03 04 05 06 07 08 09 10 11 12 13 14 15 16 17 18 19 20 21 22 23 24 25 26 27 28 29 30 31			01	02	03
[W27]	04	05	06	07	08	09	10
[W28]	11	12	13	14	15	16	17
[W29]	18	19	20	21	22	23	24
[W30]	25	26	27	28	29	30	31

07

Fiery VDP Technology

Fiery Variable Data Printing (VDP) solutions help you stay ahead of the competition by enabling you to produce new high-margin VDP services that get you and your customers noticed. The flexible Fiery VDP solutions also increase your productivity to meet those tight deadlines, regardless of the jobs.



AUGUST



2016

	MONDAY	TUESDAY	WEDNESDAY	THURSDAY	FRIDAY	SATURDAY	SUNDAY
[W31]	01	02	03	04	05	06	07
[W32]	08	09	10	11	12	13	14
[W33]	15	16	17	18	19	20	21
[W34]	22	23	24	25	26	27	28
[W35]	29	30	31			JULY 2016 M T W T F S S 01 02 03 04 05 06 07 08 09 10 11 12 13 14 15 16 17 18 19 20 21 22 23 24 25 26 27 28 29 30 31	SEPTEMBER 2016 M T W T F S S 01 02 03 04 05 06 07 08 09 10 11 12 13 14 15 16 17 18 19 20 21 22 23 24 25 26 27 28 29 30

08

Fiery Color Profiler Suite

Fiery Color Profiler Suite is a complete color management solution that allows users to create ICC profiles, optimize spot colors, perform color quality assurance and match color across multiple presses in a digital production environment. Fiery Color Profiler Suite streamlines the calibration and profiling processes and guarantees outstanding, accurate results every time.



SEPTEMBER



2016

	MONDAY	TUESDAY	WEDNESDAY	THURSDAY	FRIDAY	SATURDAY	SUNDAY
[W35]	AUGUST 2016 M T W T F S S 01 02 03 04 05 06 07 08 09 10 11 12 13 14 15 16 17 18 19 20 21 22 23 24 25 26 27 28 29 30 31	OCTOBER 2016 M T W T F S S 01 02 03 04 05 06 07 08 09 10 11 12 13 14 15 16 17 18 19 20 21 22 23 24 25 26 27 28 29 30 31		01	02	03	04
[W36]	05	06	07	08	09	10	11
[W37]	12	13	14	15	16	17	18
[W38]	19	20	21	22	23	24	25
[W39]	26	27	28	29	30		

09

Fiery Color Management

Fiery servers provide state-of-the-art imaging technology, combined with expert color management tools, to deliver high-quality images with the accurate, consistent color customers want.



OCTOBER

2016

	MONDAY	TUESDAY	WEDNESDAY	THURSDAY	FRIDAY	SATURDAY	SUNDAY
[W39]	SEPTEMBER 2016 M T W T F S S 01 02 03 04 05 06 07 08 09 10 11 12 13 14 15 16 17 18 19 20 21 22 23 24 25 26 27 28 29 30	NOVEMBER 2016 M T W T F S S 01 02 03 04 05 06 07 08 09 10 11 12 13 14 15 16 17 18 19 20 21 22 23 24 25 26 27 28 29 30				01	02
[W40]	03	04	05	06	07	08	09
[W41]	10	11	12	13	14	15	16
[W42]	17	18	19	20	21	22	23
[W43]	24	25	26	27	28	29	30
[W44]	31						

10

Fiery Central

Fiery Central integrates your production systems to make existing or new printers more scalable and productive. It combines multiple Fiery Driven™ digital printers, and other select printers, into a centralized print production system unified by Fiery Command WorkStation®, the award winning, intuitive user interface.



NOVEMBER

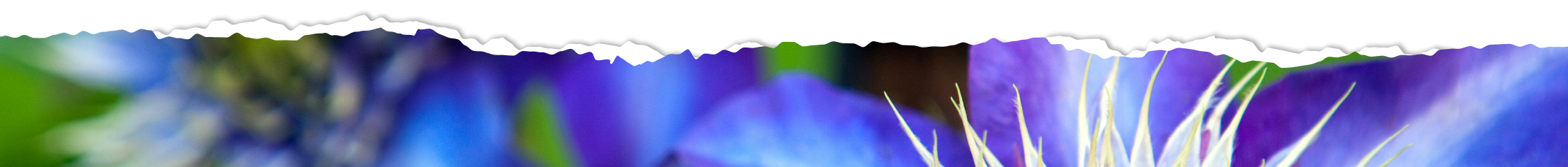
2016

	MONDAY	TUESDAY	WEDNESDAY	THURSDAY	FRIDAY	SATURDAY	SUNDAY
[W44]		01	02	03	04	05	06
[W45]	07	08	09	10	11	12	13
[W46]	14	15	16	17	18	19	20
[W47]	21	22	23	24	25	26	27
[W48]	28	29	30			OCTOBER 2016 M T W T F S S 01 02 03 04 05 06 07 08 09 10 11 12 13 14 15 16 17 18 19 20 21 22 23 24 25 26 27 28 29 30 31	DECEMBER 2016 M T W T F S S 01 02 03 04 05 06 07 08 09 10 11 12 13 14 15 16 17 18 19 20 21 22 23 24 25 26 27 28 29 30 31

11

Fiery Servers

Fiery print servers are software-intensive digital front ends (DFE) that drive a full range of color and black-and-white digital print engines. They provide industry-leading performance, color accuracy, usability and integration that improve the quality and efficiency of digital printing and allow you to profitably provide a wider range of print services.



DECEMBER



2016

	MONDAY	TUESDAY	WEDNESDAY	THURSDAY	FRIDAY	SATURDAY	SUNDAY
[W48]	NOVEMBER 2016 M T W T F S S 01 02 03 04 05 06 07 08 09 10 11 12 13 14 15 16 17 18 19 20 21 22 23 24 25 26 27 28 29 30	JANUARY 2017 M T W T F S S 01 02 03 04 05 06 07 08 09 10 11 12 13 14 15 16 17 18 19 20 21 22 23 24 25 26 27 28 29 30 31		01	02	03	04
[W49]	05	06	07	08	09	10	11
[W50]	12	13	14	15	16	17	18
[W51]	19	20	21	22	23	24	25
[W52]	26	27	28	29	30	31	

12



EFI Business Management

With shorter run lengths and demand for faster turnaround time, business-wide workflow automation and integration are keys to success.

Two-way communication provides production information to EFI business management systems for more efficient production scheduling, accurate cost estimates and transparent and timely interaction with print buyers.







 Printed on a Fiery Digital Print Server
 driving a Digital Color Printer.

ColorWise, Command WorkStation, Digital StoreFront, EFI, the EFI logo, Electronics For Imaging, Fiery, the Fiery logo, Fiery Driven, the Fiery Driven logo, Fiery JobFlow, Fiery JobMaster, FreeForm, Monarch, Pace, PrintMe, the PrintMe logo, PrintSmith, PrintSmith Site, Printstream, RIPChips, RIP-While-Print, Spot-On, and WebTools are trademarks of Electronics For Imaging, Inc. and/or its wholly owned subsidiaries in the U.S. and/or certain other countries. All other terms and product names may be trademarks or registered trademarks of their respective owners, and are hereby acknowledged.

Nothing herein should be construed as a warranty in addition to the express warranty statements provided with EFI products and services.

© 2015 Electronics for Imaging