

## PANTONE Approved Fiery Servers

# Meet Print Buyers' Unique Color Needs by Downloading the Latest PANTONE PLUS Libraries and Using Integrated Fiery Color Tools

Print buyers have many different spot color needs. Meet their requirements better by downloading the latest PANTONE PLUS libraries for your Fiery® server.

The Fiery PANTONE Approved workflow ensures that print providers produce the most consistent reliable spot colors, based on industry-standard ICC profiles for the PANTONE MATCHING SYSTEM®. Coupled with Fiery's scalable color management tools based on an open platform, users can accurately print the latest state-of-the-art PANTONE colors.

### Fiery Servers Come with Integrated Color Management Features and Tools

Fiery servers' scalable approach to color management provides integrated color features and advanced color tools to create the perfect color recipe for the specific needs of different print buyers. Fiery servers deliver exceptional out-of-the-box color with Fiery color and imaging technology. For greater control over spot color matching, choose Fiery Spot-On™. To guarantee color reproduction is always accurate consistent and reliable use Fiery Color Profiler Suite. For more advanced tools, there is Fiery Graphic Arts Package and Fiery Graphic Arts Package, Premium Edition to make color troubleshooting, preflight, and proofing tasks quick and precise.

### PANTONE Approved Fiery Servers Give You State-of-the-Art PANTONE Colors

PANTONE Approved Fiery servers automate the color process from job submission to output. This automation eliminates guesswork and costly re-work by controlling how colors will print.

Using Spot-On on your Fiery server takes the guesswork out of color matching via an intuitive interface that makes it fast and easy to define or modify spot colors and eliminates the time-consuming task of looking up CMYK tint values. Spot-On reduces the potential for error by allowing users to create libraries of custom colors for re-use later, and to accurately map substitutions between applications that use CMYK and RGB color spaces to define spot colors.



## PANTONE Approved Fiery Servers

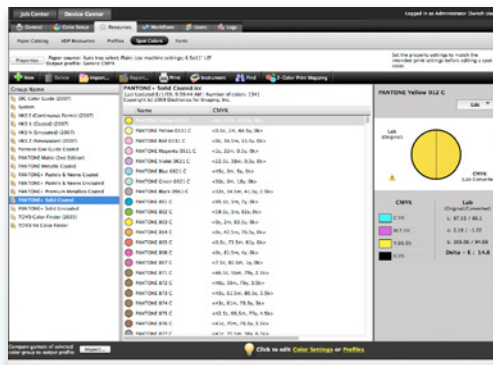
### How to Download the PANTONE Libraries

This document references the PANTONE+ V2 Libraries as an example. If you are downloading a different PANTONE Library, please substitute the desired library name below. Follow the steps below to easily download the PANTONE Library.

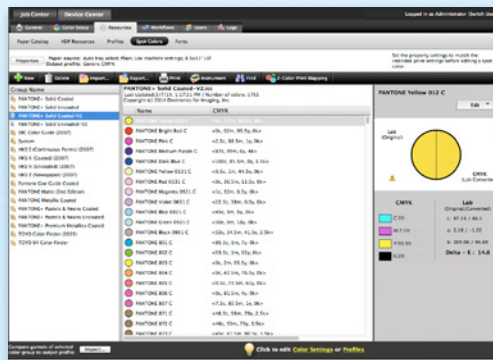
1. Download the PANTONE+ V2 libraries from [www.efi.com/pantone](http://www.efi.com/pantone).
2. Launch Fiery Command WorkStation®.
3. Connect to the desired Fiery server to add the PANTONE+ V2 libraries.
4. Go to Device Center.
5. Select Resources.
6. Choose Spot Colors from the Go Menu.

For more information contact your local Fiery server supplier or go to [www.efi.com/fiery](http://www.efi.com/fiery)

EFI's portfolio of integrated solutions increases productivity and improves your bottom line. Find out more at [www.efi.com](http://www.efi.com).



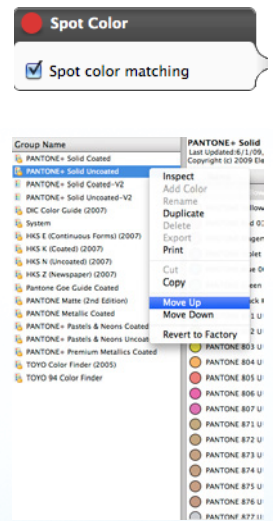
7. Click Import.
8. Navigate to the location of the downloaded PANTONE+ V2 libraries.
9. Choose the first library to be imported.
10. Click Open. Notice the new library appears in the color libraries list located at the left side of the page.



11. Repeat for the remaining libraries you wish to load.

### Important Notes

- Remember to turn on Spot Color Matching in the Fiery Color Setup for spot color libraries to be used.
- If you have previously edited any of the PANTONE+ libraries in your Fiery, position the new PANTONE+ V2 groups after the older PANTONE+ groups in the Group Name list. Your edits to the old PANTONE+ libraries are preserved because the Fiery searches for spot colors name matches from the top of the list. New names in the new groups will still be found.



### Other Tips to Enhance Color Output with Fiery Servers

- To ensure the best possible color output, use an approved spectrophotometer to calibrate.
- For optimal results and to facilitate soft-proofing, create custom output profiles for specific papers using Fiery Color Profiler Suite.
- To visualize which PANTONE swatches are outside the printer gamut use the Fiery Color Profiler Suite to compare the PANTONE library with your printer profile.
- To know how swatches from the PANTONE library will look when printed using specific combinations of printer and paper stock, simply select a PANTONE library and choose print.
- If you wish to fine-tune the output of a PANTONE color, use the Find function in Spot Colors to locate and modify the CMYK conversion of the spot color within the PANTONE library.
- For precise control, select the match based on a printed spot color search pattern. Print the pattern by highlighting the color and clicking Print in the Spot Colors toolbar.



6750 Dumbarton Circle  
Fremont, CA 94555  
650-357-3500  
[www.efi.com](http://www.efi.com)

Auto-Count, BioVu, BioWare, ColorWise, Command WorkStation, Digital StoreFront, DocBuilder, DocBuilder Pro, DocStream, EDOX, the EFI logo, Electronics For Imaging, Fiery, the Fiery logo, Inkware, JetPrint, MicroPress, OneFlow, PressVu, PrintIntellect, PrinterSite, PrintFlow, PrintMe, PrintSmith Site, Prograph, RIP-While-Print, UltraVu and VUTEk are registered trademarks of Electronics For Imaging, Inc. in the U.S. and/or certain other countries. BESTColor is a registered trademark of Electronics For Imaging GmbH in the U.S. The APPS logo, AutoCal, Balance, ColorPASS, Dynamic Wedge, EFI, Estimate, Fast-4, Fiery Driven, the Fiery Driven logo, Fiery Link, Fiery Prints, the Fiery Prints logo, Fiery Spark, FreeForm, Hagen, the JetPrint logo, Logic, Pace, Printcafe, the PrintMe logo, PrintSmith, Print to Win, PSI, PSI Flexo, Rastek, the Rastek logo, RIPChips, SendMe, Splash, Spot-On, UltraPress, UltraTex, UV Series 50, VisualCal, the VUTEK logo and WebTools are trademarks of Electronics For Imaging, Inc. in the U.S. and/or certain other countries. Best, the Best logo, Colorproof, PhotoXposure, RemoteProof, and Screenproof are trademarks of Electronics For Imaging GmbH in the U.S. and/or certain other countries. All other terms and product names may be trademarks or registered trademarks of their respective owners, and are hereby acknowledged.

