

# Fiery Command WorkStation 6 FS200 Colour Settings

## How to use this document

This tool replaces the legacy Fiery® colour flow chart illustration. It is intended to show users the detailed colour processing path on the Fiery server. The tool is delivered as a video presentation, click here to access the [video](#). See the next page for the recommended Fiery colour settings. This page describes the basics of accessing the expert settings along with some key concepts related to digital front end (DFE) colour management.

## Managing various colour spaces

Users are able to send jobs to the Fiery server containing a variety of colour spaces. The Fiery server processes each of the many colour types for precise colour output and consistency. Fiery servers offer advanced colour management capabilities that provide users with greater colour control. The expert features and options allow users to customize workflows to deliver accurate colour every time.

This document provides examples of the impact of various colour management settings to help guide you to configuring the Fiery server for the best colour result. Although not every possible combination of options is presented, enough information is provided to ensure that you can make the correct decisions when setting up your workflows and output devices.

In a traditional print environment, CMYK workflows were often preferred. Fiery servers' colour technology allow the flexibility to work in a variety of colour spaces like CMYK, RGB, device independent colour spaces, and custom spot colours without having to modify the native content to be compatible with a traditional print workflow.

## How do I know what colour space I am using?

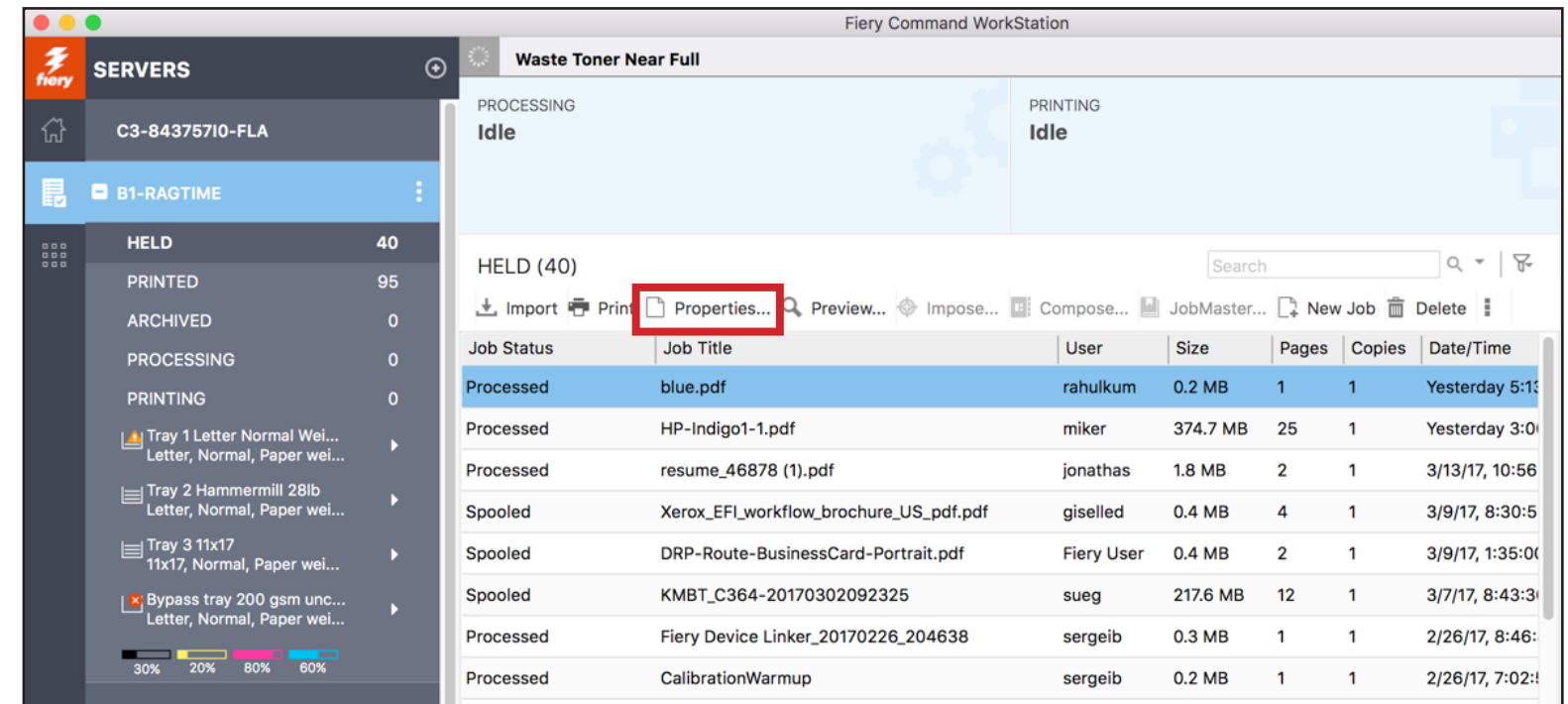
As content is designed in a native application, this provides the first source of information on the colour type. Business applications typically use RGB while graphics applications can draw with CMYK, RGB and custom spot colours. Digital cameras capture images in RGB, and corporate logos are often created using spot colours from industry standard colour libraries. If you do not have access to the native content, the Fiery server has utilities in the Graphic Arts Package, Premium Edition (or Productivity Package) that can help you identify documents' colour content.

## Print Grey Using Black Only

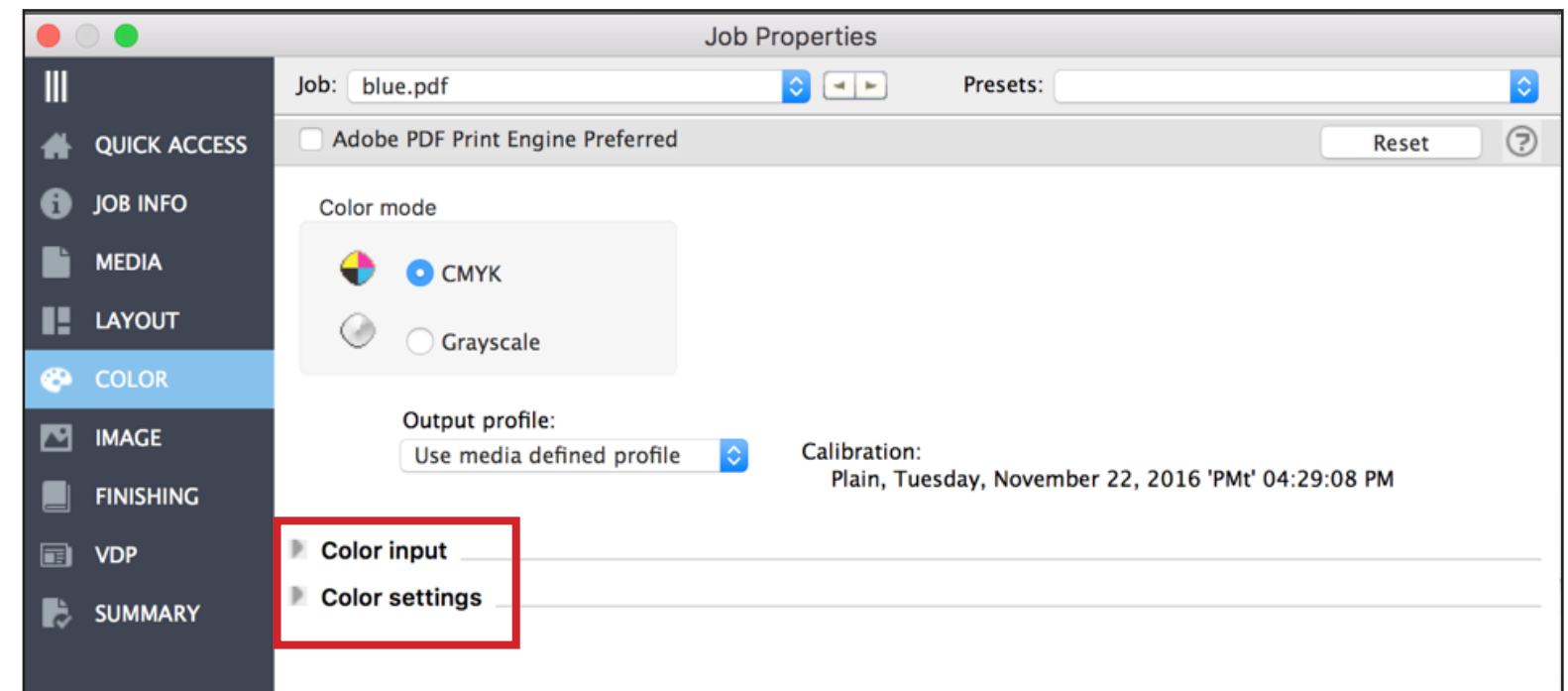
Colour management is designed to convert colour from a source device to a destination device and closely maintain the colour appearance between these different devices. For example printing a RGB photograph from a digital camera to a printer using CMYK. A side effect of this design is converting pure colours like Black and Grey into the print system's CMYK. This can affect the neutral appearance of grey and add unwanted colour clicks to the print job. Fiery servers' Grey and Black processing eliminate this problem by preserving the source Black and Grey colours to print with only the print system's black toner, saving the colour click charge.

## How to access the colour settings on your Fiery DFE

Select Properties after highlighting a job in the list from within Fiery Command WorkStation.



Expand the Color input and Color settings sections to view all colour settings.



# Fiery Command WorkStation 6 FS200 Colour Settings – Best Practice Settings

