

MX-PE13 FIERY® PRINT SERVER

Increase productivity and deliver professional results with the Sharp Pro Series MX-7090N and MX-8090N Color Document Systems

With the MX-PE13 Fiery® Print Server, these Sharp Color Document Systems become powerful integrated solutions for managing high-volume color critical environments.

Easily handle high-volume print production

Boost production with the power of the new, advanced Fiery FS300 Pro technology. The MX-PE13 Fiery Print Server is designed to handle heavy workloads and provide faster turnaround times. It enables you to produce short-run jobs in-house by automating manual tasks and increases your workflow flexibility by supporting industry-leading variable data printing (VDP) formats.

Centralize job management

Fiery technology allows you to centralize job management by connecting to all Fiery servers on the network. The intuitive interface of Fiery Command WorkStation® makes complex jobs simple to set up and print, regardless of the operator's experience directly from the Sharp Pro Series touch-screen.

Produce consistent and accurate color

Gain complete control of color quality and produce repeatable color every time with professional-level color management tools. Accurately reproduce spot colors to achieve the best possible match for corporate colors every time with Fiery Spot-On™.



Sharp MX-8090N Color Document System

Get the job right the first time

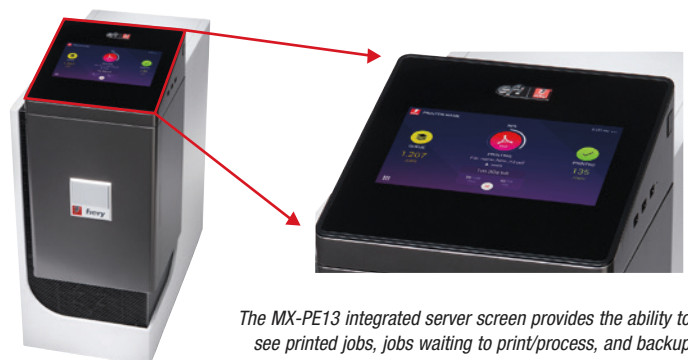
Streamline job layout with the instant visual preview and advanced makeready capabilities of the optional Fiery Impose and Fiery JobMaster™. Minimize rework with the optional Fiery Graphic Arts Package, Premium Edition that enables the preflighting and troubleshooting of digital jobs before printing.

Automate with seamless integration

By supporting the Adobe® PDF Print Engine v4, The MX-PE13 Fiery Print Server offers a native end-to-end PDF workflow, allowing you to improve the consistency and flexibility of your printed output from design to print.



Fiery Command WorkStation shown fully integrated at the Sharp control panel



The MX-PE13 integrated server screen provides the ability to see printed jobs, jobs waiting to print/process, and backup schedules from Fiery QuickTouch™ software interface

MX-PE13 FIERY® PRINT SERVER

MX-PE13 Fiery Print Server Specifications

- Server Type NX Pro – external server
- System Software Fiery FS300 Pro
- CPU Type Intel® Core™ i5-6500 processor
- CPU Speed 3.2 up to 3.6 GHz with Turbo
- Memory 8 GB RAM
- Hard Disk Drive 1 TB
- Operating System Windows 10 IoT Enterprise 2016 LTSB
- Pwr. Source 100-240 VAC, 50/60 Hz, 6 Amps @100 VAC, 3 Amps @240 VAC
- Pwr. Consumption 100w (Typical)/350w (Max.)

Fiery Productivity and Workflow

- Fiery Command WorkStation® 6
- Fiery Driver 6.0
- EFI Fiery WebTools™
- Fiery JDF
- Fiery Server Presets
- Fiery QuickTouch™ software
- Fiery Go
- Fiery Hot Folders and Virtual Printers
- Direct Mobile Printing
- PrintMe® Cloud Printing
- Control panel integration with Fiery Command WorkStation

Fiery Color and Imaging Technology

- Fiery ColorWise® color management technology
- Fiery Graphic Arts Package, Premium Edition * (option)
- Fiery Color Profiler Suite ** (option)
- EFI ES-2000 Spectrophotometer (option)
- Fiery Spot-On™
- PANTONE® approved libraries (with Fiery Spot-On)
- Fiery Calibrator
- Job-Based Calibration
- Calibration Guard
- Image Smoothing
- Dynamic HD Text and Graphics
- Reverse Text and Graphics Growth
- Fiery Image Enhance Visual Editor
- Fiery ImageViewer¹
- Auto Trapping

Document Preparation

- Fiery JobMaster * (option)
- Fiery Impose * (option)
- Fiery Compose (option)
- Fiery JobFlow™ * (option)
- Fiery JobFlow Base
- Fiery VUE
- Booklet Maker
- Paper Catalog
- Full bleed printing support

Variable Data Printing

- Supported file formats:
 - Fiery FreeForm™ v1 enhanced and v2.1, PPML 3, PDF/VT-1 and 2, VPS
- VDP Record and Set Level Finishing
- VDP Record Range Printing
- Define Record Length
- VDP Resource Manager
- VDP Raster Preview

Performance

- SmartRIP
- Spool-RIP-Print simultaneously
- Sequential Print
- Schedule Print
- Suspend on Mismatch
- Proof Print
- Quick Doc Merge

File Format Support

- Adobe® PostScript® Levels 1, 2, 3
- PDF/X Output Intent
- Enhanced PCL® 6
- Adobe PDF Print Engine (APPE) version 4.4 ***
- Microsoft Office document formats: doc, xls, ppt, pub (via Hot Folders)

Networking/ Connectivity/ Security

- TCP/IP, AppleTalk, Bonjour support, SNMP, Port 9100, IPP, FTP, SMB, WSD, point and print, print via email (PS/PDF), IPv6 support
- Secure Erase
- Secure Printing
- Backup and Restore
- Fiery System Restore
- IPsec and Encryption
- Network protection includes:
 - 802.1x support, IP filtering, port blocking (filtering), SSL support (IPP/LDAP/HTTP/POP/SMTP), certificate management, self-signed certification

Fiery Color Print Server and Options

MX-PE13	Fiery Print Server
MX-PEGAP	Fiery Graphic Arts Package, Premium Edition *
	<ul style="list-style-type: none">• Fiery ImageViewer• Fiery Automatic Preflight• Postflight• Halftone Simulation• 2-Color Print Mapping• Configurable Auto Trapping• Graphic Arts Filters for Hot Folders• Control Bar
MX-PEFIS	Fiery Impose *
MX-PEFC	Fiery Compose
MX-PEIC	Fiery Impose–Compose
MX-PEJM1	Fiery JobMaster *
MX-PEJI1	Fiery JobMaster–Impose
MX-PECPS1	Fiery Color Profiler Suite **
MX-PESP	EFI ES-2000 Spectrophotometer
MX-PECPS2	Fiery Color Profiler Suite ** with ES-2000
MX-PEJF1	Fiery JobFlow *
MX-PECE1	Fiery Central
MX-PEHD13	Removable HDD Kit
MX-PENXLS	Fiery NX Station LS
MX-PENXGL	Fiery NX Station GL

¹ Requires Fiery Graphic Arts Package, Premium Edition

* Free 30-day trial available

** Free trial in demo mode

*** Updated with enhancements and service releases on an ongoing basis



SHARP ELECTRONICS CORPORATION
100 Paragon Drive, Montvale, NJ 07645
1-800-BE-SHARP • www.sharppusa.com

Design and specifications subject to change without notice. Sharp, Sharp OSA and all related trademarks are trademarks or registered trademarks of Sharp Corporation and/or its affiliated companies. Windows, Windows Server, Windows Vista, and Office are trademarks or registered trademarks of Microsoft Corporation. EFI, Fiery, Electronics For Imaging, the Fiery logo, the EFI logo, JobFlow, FreeForm, Spot-On, WebTools and Command WorkStation are trademarks or registered trademarks of Electronics For Imaging, Inc. All other trademarks are the property of their respective owners.

