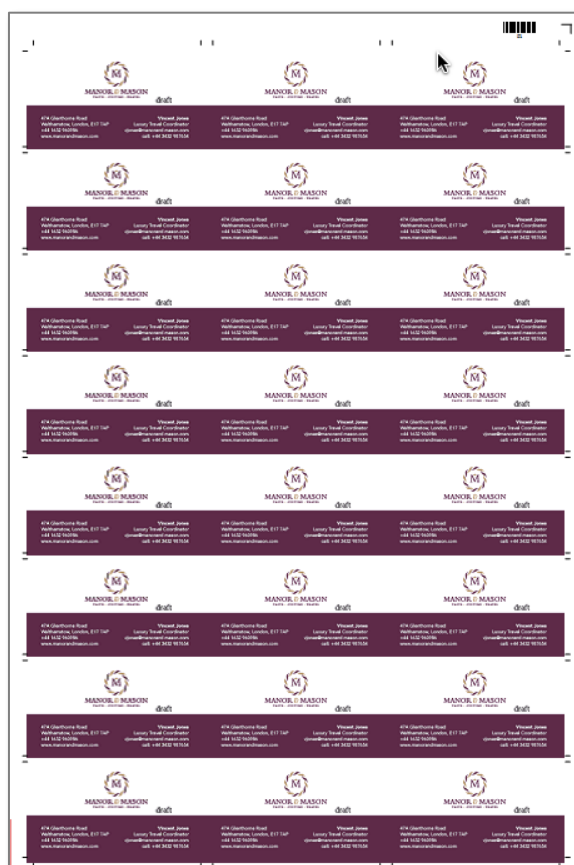


How-to: Automate offline finishing with Duplo finishers

Part 1: Use pre-made templates to automate most common jobs



Feature overview

Fiery® Impose is the most intuitive PDF-based sheet imposition software on the market. Tight integration with Fiery Command WorkStation®, makeready software, and prepress tools helps automate print job submission.

Fiery Impose templates allow users to save the most common job layouts to automate the imposition process. Templates can also include barcodes and registration marks. These are recognized by the barcode scanner in Duplo finishing equipment using the * JobID * format.

The barcodes and registration marks on the printed sheets instruct the Duplo finisher on how to position blades, cutters, and creasers to finish the print job.

Integrating Fiery Impose with Duplo finishers brings dramatic productivity gains to job preparation and finishing by automating the process. This saves time, plus minimizes waste and errors.

This how-to guide is divided in to two parts:

- **Part 1: Use templates from the library to automate most common jobs**

Part 1 provides a set of common Fiery Impose templates that include Duplo barcodes. The templates can be imported in the Duplo finisher equipment and used to make the printed output ready for finishing.

This feature is compatible with Duplo DC-615, DC-616, DC-645, DC-646, DC-745, and DC-746 offline finishers.

- **Part 2: Create a custom layout to automate a coupon job**

Part 2 provides the steps to create a new layout on the Duplo finisher controller. This layout can be imported in Fiery Impose so users can create a template to automate future jobs from job submission to finishing.

This feature is compatible with the Duplo DC-746 offline finisher and it will be available for the DC-646 later in 2018.

Part 1: Use pre-made templates to automate most common jobs

Objectives

- Identify where imposition templates are stored on the Fiery Command WorkStation computer client
- Load the Impose-Duplo templates in the Fiery imposition template folder
- Add the Impose-Duplo templates in to the Duplo workstation
- Create and save an Impose-Duplo template for a business card as an example

Additional resources

For additional software downloads, training resources, and more, go to: [Fiery Online Resources](#).

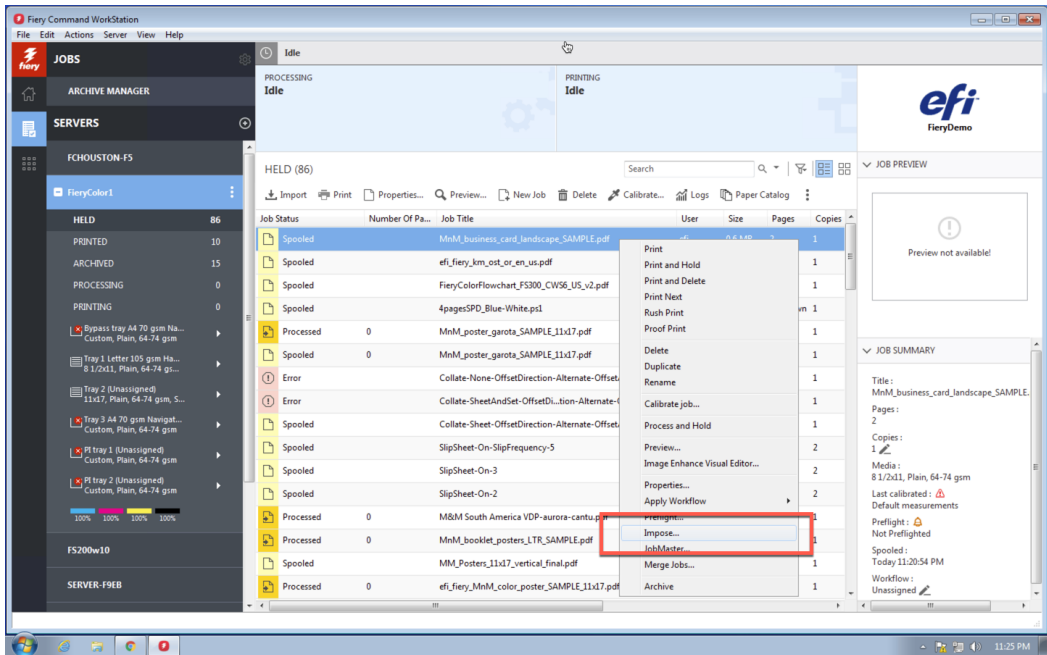
For additional templates and job applications in metric sizes, visit the Duplo web site at: <https://www.duplointernational.com/uk/Cutter-Creasers/products/2028/>.

Before you begin

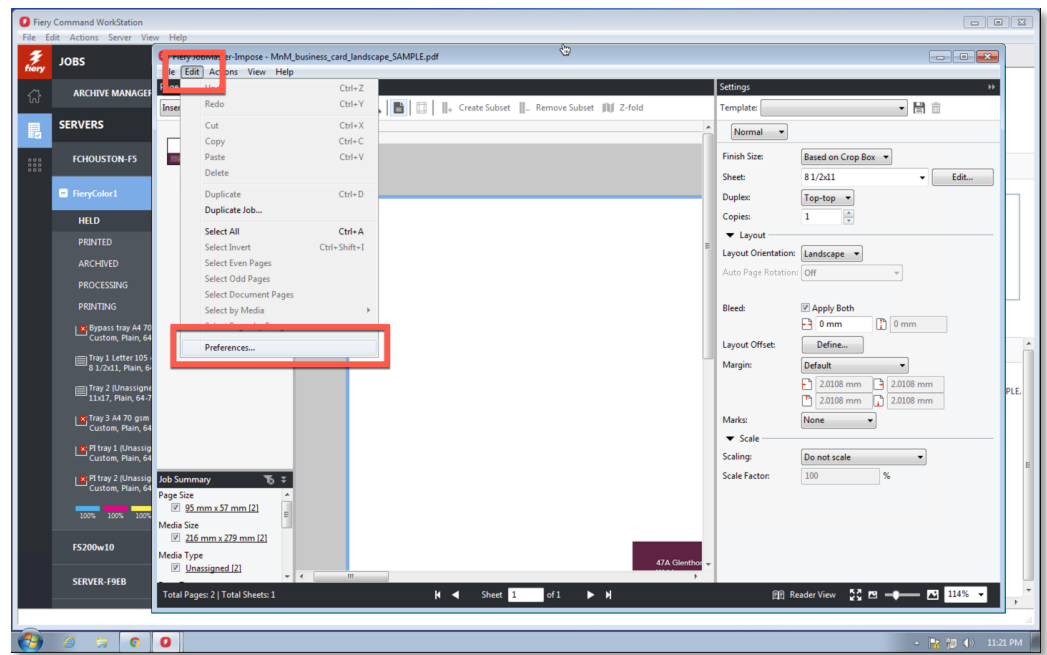
- Open Fiery Command WorkStation 6 or later, and connect to at least one Fiery server.
- Activate the Fiery Impose license on the computer running Command WorkStation. Fiery Impose can either be fully licensed or running in trial mode. To request the free 30-day trial for Fiery Impose, go to: fiery.efi.com/impose/freetrial30.
- Depending on the paper size standard you use, open the zip file **Fiery_Impose_Duplo_Templates_US** or **Fiery_Impose_Duplo_Templates_Metric**. Copy the file to a location you can access from the client running Command WorkStation and the Duplo workstation client.
- Place the sample file, **MnM_business_card_landscape_SAMPL E.pdf**, in the Fiery server **Held** queue by dragging the file. Or use the Command WorkStation Import menu option.
- Make sure the printer and Fiery server have been calibrated before printing any output.

Identify the Fiery imposition template

1. Select any spooled job in the **Held** queue. Right-click to select **Fiery Impose**.

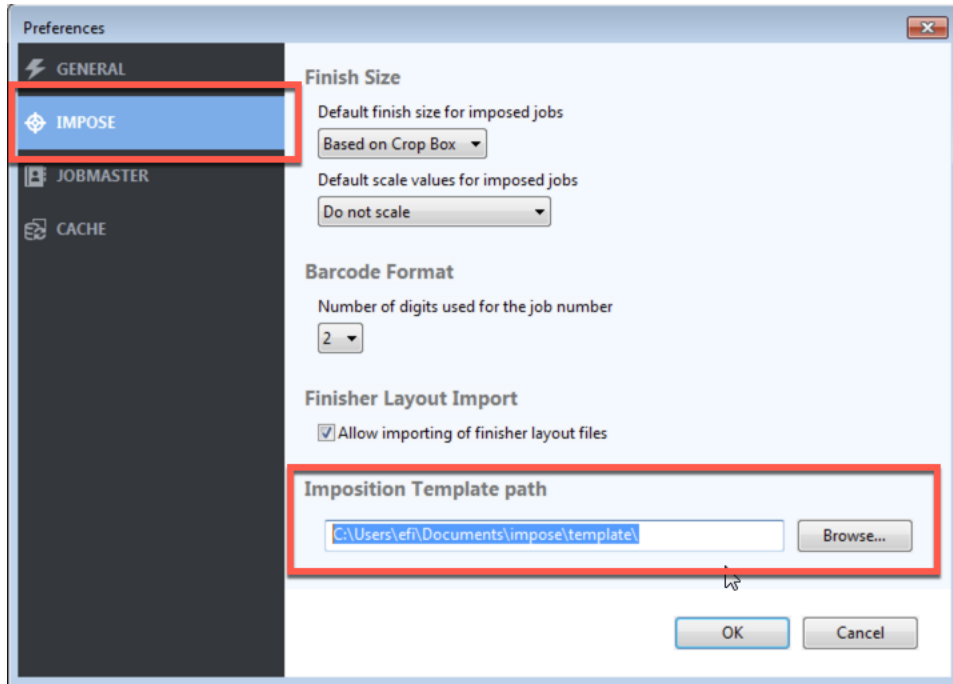


2. In Fiery Impose, go to **Edit** and select **Preferences**.



How to: Part 1: Use pre-made templates to automate most common jobs

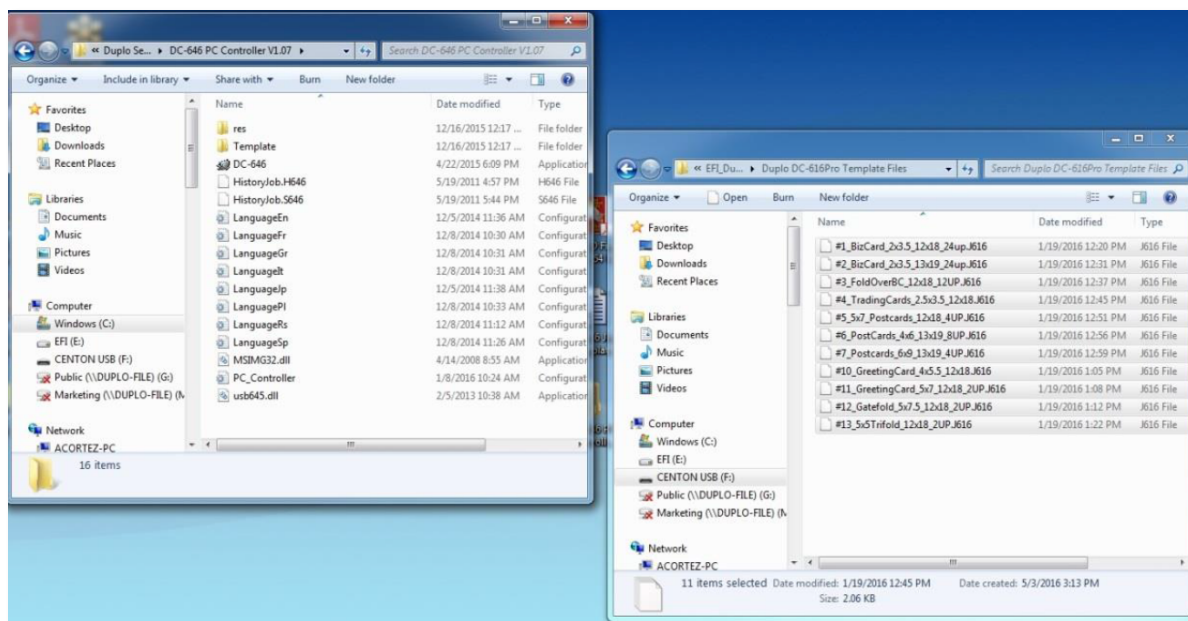
3. Click **IMPOSE** to view the preferences for Fiery Impose.
4. Note the default Imposition Template path location.



The imposition template path location contains the templates you can access in Fiery Impose.

Add the Duplo barcode templates to Fiery Impose

1. Open the Fiery server, Windows or macOS client and browse to the location where you stored the **Fiery_Impose_Duplo_Templates_US** or **Fiery_Impose_Duplo_Templates_Metric** folder.
2. Open the folder.
3. Copy the .dbt files you want, and paste into the imposition template path location identified in the previous step.
4. These additional templates are now available to use in Fiery Impose.

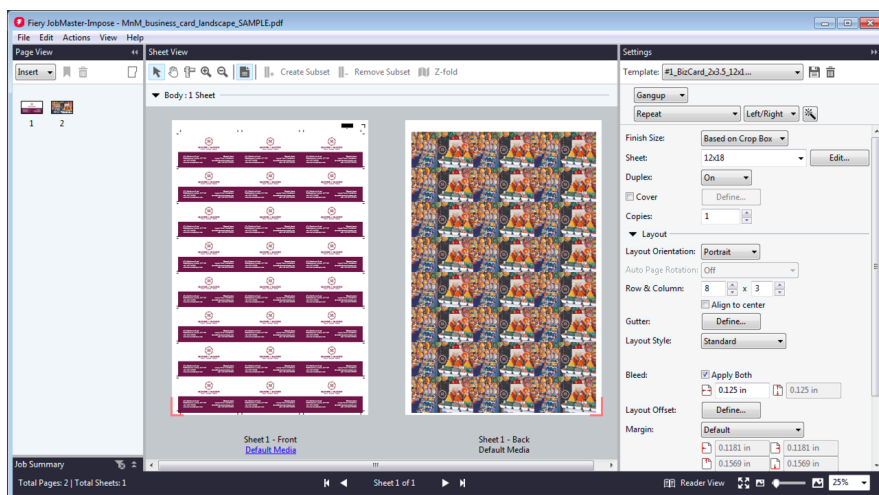


Add the Fiery barcode templates to the Duplo workstation client

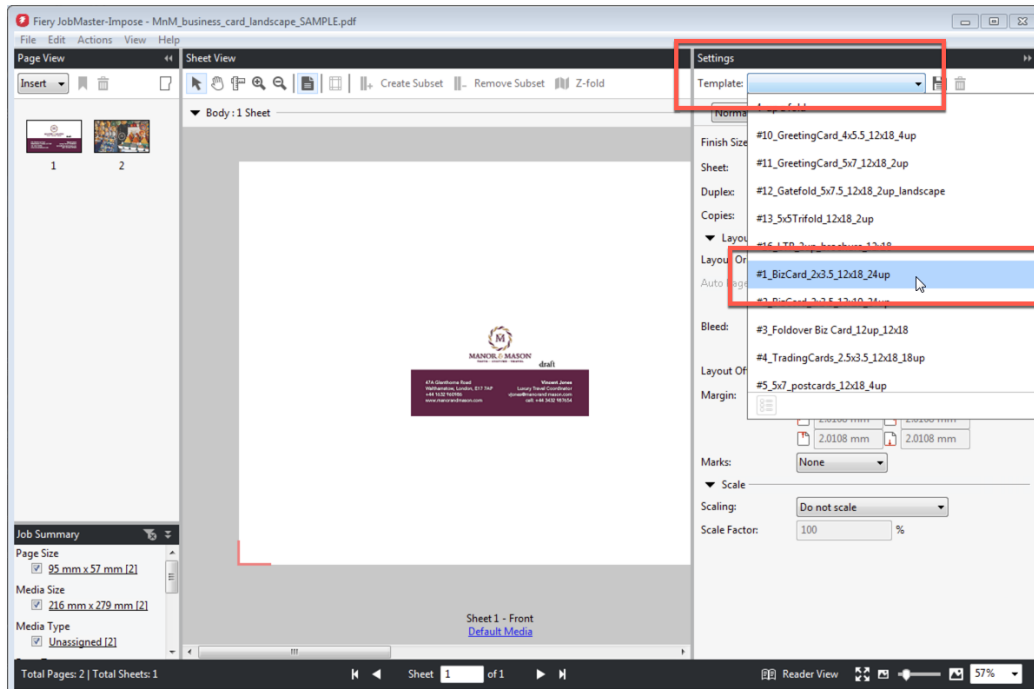
1. On the computer connected to the Duplo machine, browse to locate the **Fiery_Impose_Duplo_Templates_US** or **Fiery_Impose_Duplo_Templates_Metric** folder. Then open the **Duplo Template Files** folder.
2. Browse to locate the appropriate Duplo model and copy the template files.
3. Open a second window, and browse to the folder where your Duplo job files (.J616, .J646, etc.) are stored. This folder is model dependent. For example, the default for the DC-616 is Duplo Seiko Corp\DC-616PRO PC Controller v.1.x.x. Users may select the location for this folder and may have already moved it somewhere more convenient, such as on the desktop.
4. Place the copied template files in to this folder.
5. The Duplo templates are now available to use with printed jobs.

Apply an imposition template for a business card

1. Select the **MnM_business_card_landscape_SAMPLE.pdf** file in the Command WorkStation Held queue. Then right-click and select **Impose**.



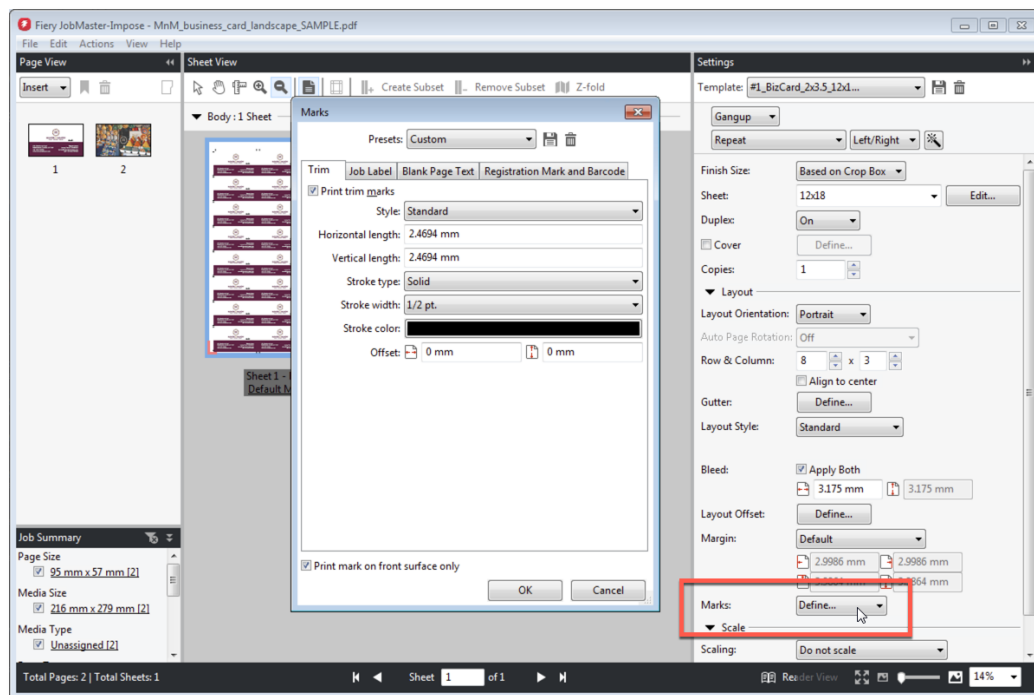
2. In the Settings pane, select **Template** to view the available templates.
3. Select the desired template. For this example, select **616 #1_BizCard_2x3.5_12x18_24up.dbt**.



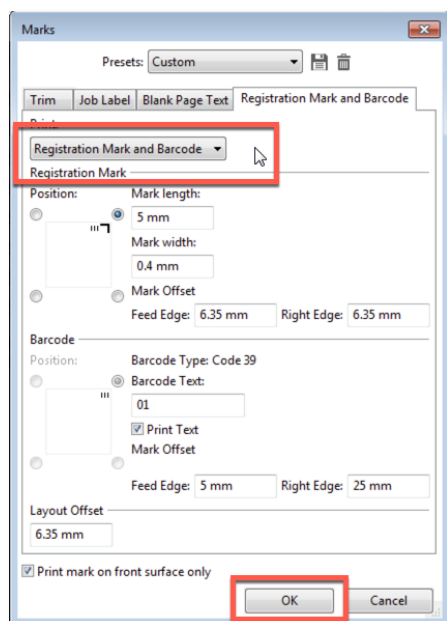
As the name of the template indicates, the template layout is designed for business card jobs with a trim box of 3.5 inches wide and 2 inches high, with a .125 inch bleed.

How to: Part 1: Use pre-made templates to automate most common jobs

- To view the default registration marks and barcode under Marks, click **Define**.



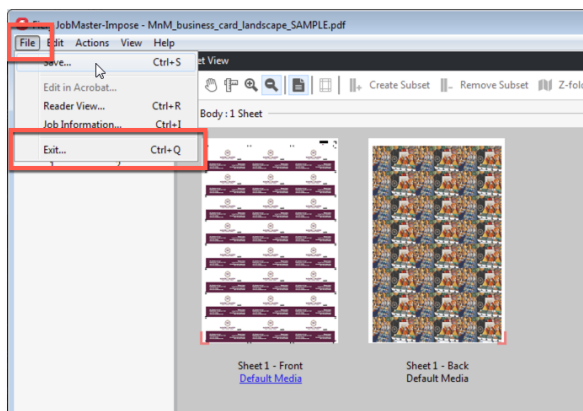
- Click the **Registration Marks and Barcode** tab. These settings in the Impose template are automatically defined. Select **OK**.



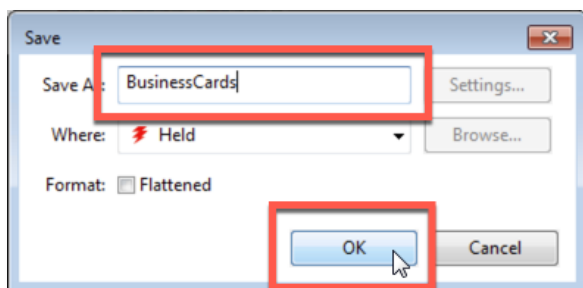
This impose template can be used for automated submission workflows using presets, Hot Folders or JobFlow. You can find more information on Hot Folders in the [How-to: Automate Offline finishing with Duplo finishers – Part 2: Create a custom layout to automate a coupon job](#).

How to: Part 1: Use pre-made templates to automate most common jobs

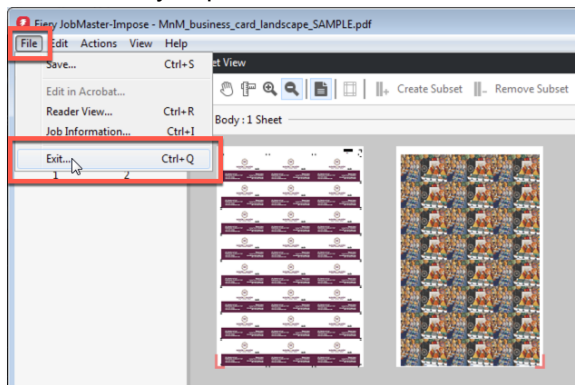
- To save and name the job, click **File > Exit**.



- Click **Save As a regular imposed job** and change the job name to **BusinessCards**. Then click **OK** when done.



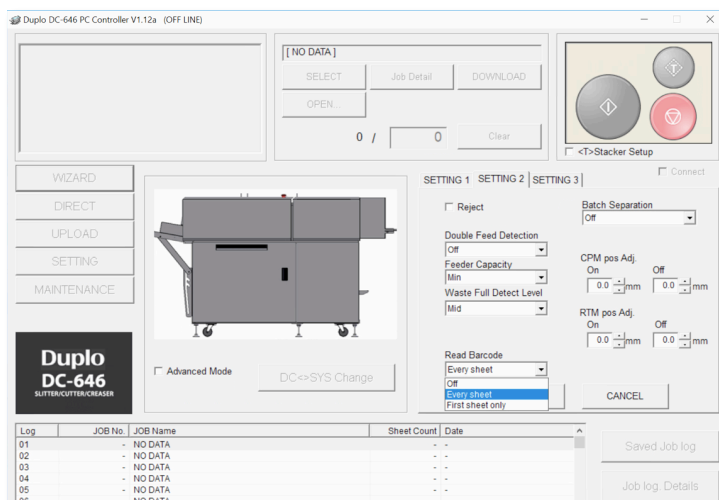
- To close Fiery Impose, click **File > Exit** or click the red **X** located in the corner.



- The new job is saved in the Held queue. Right-click on the job and select **Print**.

Complete production on the Duplo finisher


1. Load printed sheets onto the Duplo DC-615, DC-616, DC-645, DC-646, DC-745, or DC-746 finisher.
2. In the Duplo PC Controller, select the **Setting 2** tab.
3. Access the **Read Barcode** section and select **EVERY SHEET** to activate the barcode scanning feature.



4. Press **start** to run the job. The scanner will automatically detect the finishing template, based on the barcode, and begin processing the job.

EFI fuels success.

We develop breakthrough technologies for the manufacturing of signage, packaging, textiles, ceramic tiles, and personalized documents, with a wide range of printers, inks, digital front ends, and a comprehensive business and production workflow suite that transforms and streamlines the entire production process, increasing your competitiveness and boosting productivity. Visit www.efi.com or call 650-357-3500 for more information.



Nothing herein should be construed as a warranty in addition to the express warranty statement provided with EFI products and services.

The APPS logo, AutoCal, Auto-Count, Balance, BESTColor, BioVu, BioWare, ColorPASS, Colorproof, ColorWise, Command WorkStation, CopyNet, Cretachrom, Cretaprint, the Cretaprint logo, Cretaprinter, Cretaroller, Digital StoreFront, DirectSmile, DocBuilder, DocBuilder Pro, DockNet, DocStream, DSfdesign Studio, Dynamic Wedge, EDOX, EFI, the EFI logo, Electronics For Imaging, Entrac, EPCount, EPPhoto, EPRegister, EPStatus, Estimate, ExpressPay, FabriVu, Fast-4, Fiery, the Fiery logo, Fiery Driven, the Fiery Driven logo, Fiery JobFlow, Fiery JobMaster, Fiery Link, Fiery Navigator, Fiery Prints, the Fiery Prints logo, Fiery Spark, FreeForm, Hagen, Inkntensity, Inkware, LapNet, Logic, Metrix, MicroPress, MiniNet, Monarch, OneFlow, Pace, Pecas, Pecas Vision, PhotoXposure, PressVu, Printcale, PrinterSite, PrintFlow, PrintMe, the PrintMe logo, PrintSmith, PrintSmith Site, PrintStream, Print to Win, Prograph, PSI, PSI Flexo, Radius, Remoteproof, RIPChips, RIP-While-Print, Screenproof, SendMe, Sincolor, Splash, Spot-On, TrackNet, UltraPress, UltraTex, UltraVu, UV Series 50, VisualCal, VUTEk, the VUTEk logo, and WebTools are trademarks of Electronics For Imaging, Inc. and/or its wholly owned subsidiaries in the U.S. and/or certain other countries.

All other terms and product names may be trademarks or registered trademarks of their respective owners, and are hereby acknowledged.