

# 操作指南： 制作便笺簿



# 操作指南：制作便笺簿

## 功能概述

便笺簿或记事本有着无限的应用，包括备忘录或留言簿、表格和作为促销广告资料的个性化记事本。

Fiery® sever 可以自动化打印便笺簿。Pad Printing 功能可最大限度减少手动校对打印输出，并且可以根据您需要的印张量和多种尺寸打印大型和小型项目。Pad Printing 适合从微小的袖珍记事本到大型桌面日历的各种打印，使您能够快速、轻松地创建包含任何数量页面的便笺簿。

## 目标

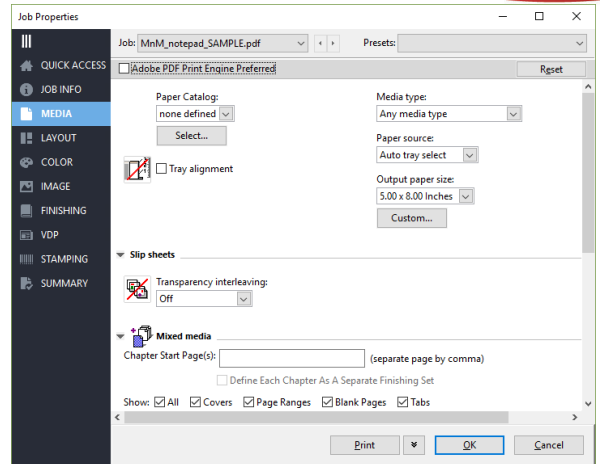
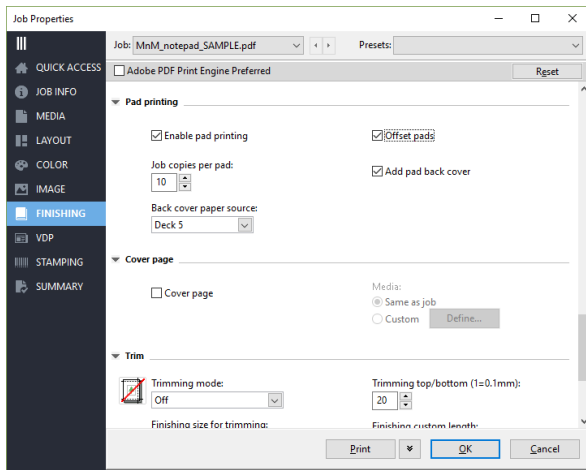
- 使用便笺簿打印工作流程制作便笺簿

## 其他资源

有关其他软件的下载、培训资源和更多信息，请前往 [Fiery 联机资源](#)。

## 开始之前

- 打开 Fiery Command WorkStation® 6 或更高版本，并连接至少一台运行 Fiery FS300 Pro 的 Fiery 服务器。
- 将示例文件 **MnM\_notepad\_SAMPLE.pdf** 放入 Fiery 服务器“保留”队列。将文件拖放到 Command WorkStation“保留”列表中，或使用 Command WorkStation“导入”菜单项。
- 确保打印机和 Fiery 服务器已在打印任何输出前校准。



## Pad printing 工作流程

1. 在 Command WorkStation“保留”列表中选择 **MnM\_notepad\_SAMPLE.pdf** 文件。然后单击右键选择**属性**。
2. 在 Job Properties 窗口中，单击**输出处理**图标。
3. 向下滚动找到 Pad Printing，然后选择**启用 Pad Printing** 复选框。
4. 为“每个便笺簿的作业份数”输入 **10**。份数可以设置为 1-999。
5. 选择**便笺簿交替**复选框。
6. 选择**添加便笺簿封底**复选框。

“添加便笺簿封底”选项并非在所有打印机上可用。使用此选项时，还可使用“封底纸张来源”选项指定封页纸张。

7. 如果您的打印机支持“添加封底”选项，选择**封底纸张来源**纸盘。
8. 单击**纸张**图标并为工作流程选择合适的纸张选项。
9. 单击**打印**。



## EFI fuels success.

We develop breakthrough technologies for the manufacturing of signage, packaging, textiles, ceramic tiles, and personalized documents, with a wide range of printers, inks, digital front ends, and a comprehensive business and production workflow suite that transforms and streamlines the entire production process, increasing your competitiveness and boosting productivity. Visit [www.efi.com](http://www.efi.com) or call 650-357-3500 for more information.



Nothing herein should be construed as a warranty in addition to the express warranty statement provided with EFI products and services.

The APPS logo, AutoCal, Auto-Count, Balance, BESTColor, BioVu, BioWare, ColorPASS, Colorproof, ColorWise, Command WorkStation, CopyNet, Cretachrom, Cretaprint, the Cretaprint logo, Cretaprinter, Cretaroller, Digital StoreFront, DirectSmile, DocBuilder, DocBuilder Pro, DockNet, DocStream, DSfdesign Studio, Dynamic Wedge, EDOX, EFI, the EFI logo, Electronics For Imaging, Entrac, EPCount, EPPhoto, EPRegister, EPStatus, Estimate, ExpressPay, FabriVU, Fast-4, Fiery, the Fiery logo, Fiery Driven, the Fiery Driven logo, Fiery JobFlow, Fiery JobMaster, Fiery Link, Fiery Navigator, Fiery Prints, the Fiery Prints logo, Fiery Spark, FreeForm, Hagen, Inkensity, Inkware, LapNet, Logic, Metrix, MicroPress, MiniNet, Monarch, OneFlow, Pace, Pecas, Pecas Vision, PhotoXposure, PressVu, Printcafe, PrinterSite, PrintFlow, PrintMe, the PrintMe logo, PrintSmith, PrintSmith Site, PrintStream, Print to Win, Prograph, PSI, PSI Flexo, Radius, Remoteproof, RIPChips, RIP-While-Print, Screenproof, SendMe, Sincolor, Splash, Spot-On, TrackNet, UltraPress, UltraTex, UltraVu, UV Series 50, VisualCal, VUTEK, the VUTEK logo, and WebTools are trademarks of Electronics For Imaging, Inc. and/or its wholly owned subsidiaries in the U.S. and/or certain other countries. All other terms and product names may be trademarks or registered trademarks of their respective owners, and are hereby acknowledged.