

# Fiery® Color Profiler Suite v5.0

## G7 Printer Matching

A horizontal, wavy line with a color gradient from purple on the left to red on the right, passing through blue, green, and yellow.

April 2018



# New features in version 5.0

---

- G7 for Printer Match
- Select CMYK source profile for Preset creation
- CPS added to Fiery Software Manager
- FD-9 sheet feeder support

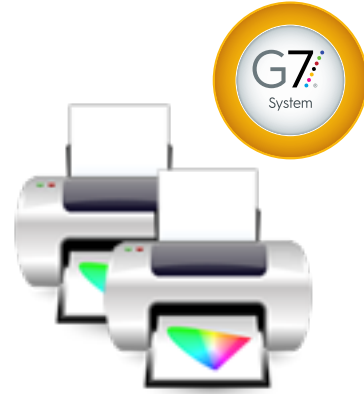


# G7 for Printer Match

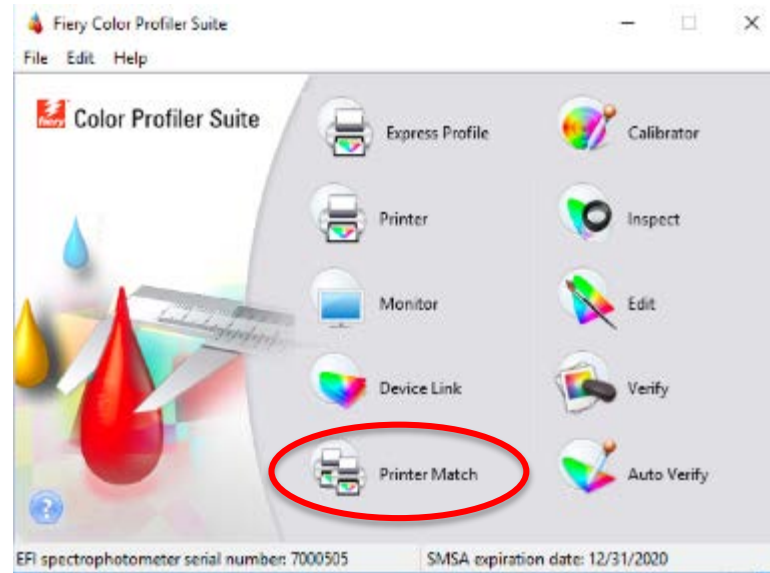


# G7 calibration support in Printer Match

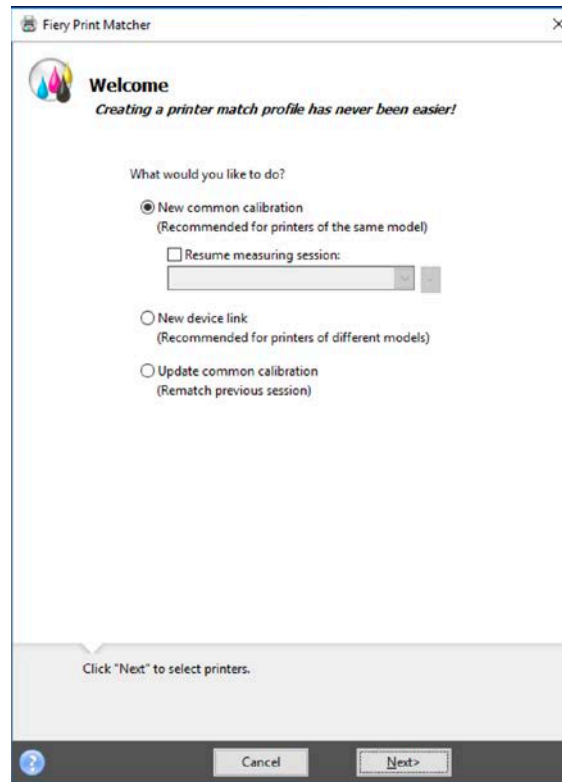
- G7 calibration workflow supported for up to 5 Fiery servers
- G7 calibration gives neutral appearance match among matched printers, even before profiling
- Ease of use for G7 calibration



# G7 for Printer Match demo



# G7 for Printer Match demo



# G7 for Printer Match demo



Fieri Print Matcher

### Select printers

Measurement name:  
G7 printer match

Select printers:

Fieri-1	+	-
Fieri-2		

Up to five printers can be selected for printer matching.

G7® gray balance calibration target

Click "Next" to set calibration print settings.

Cancel <Back Next>

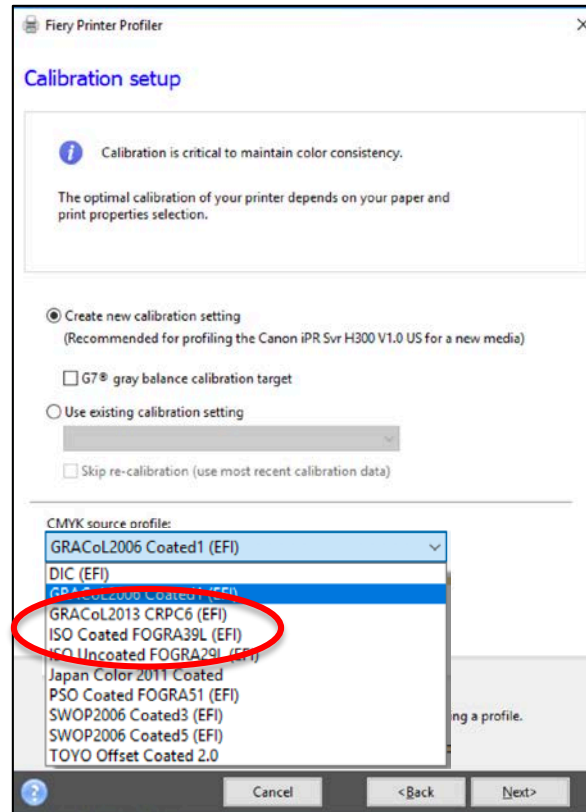


# CMYK source profile for Preset creation

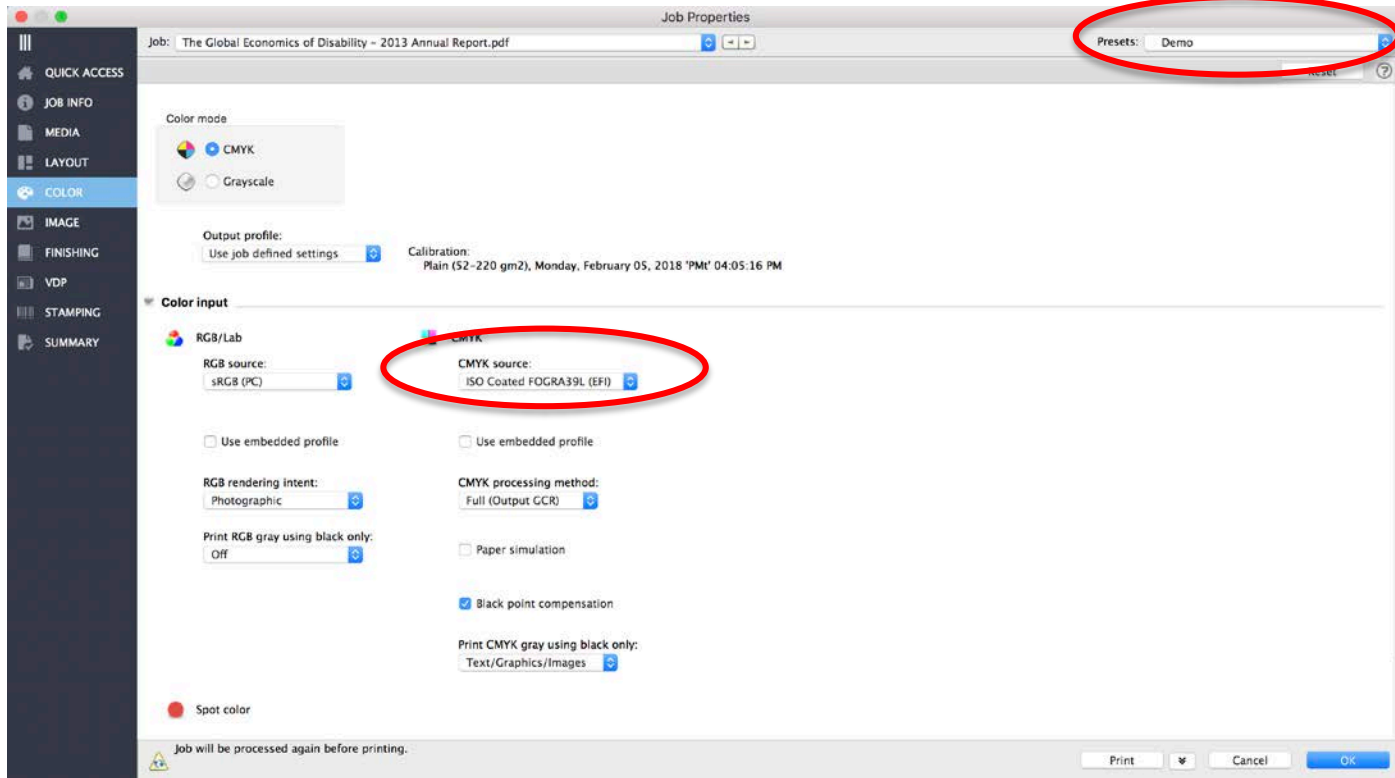




# CMYK source profile for Preset creation



# Job Properties Preset

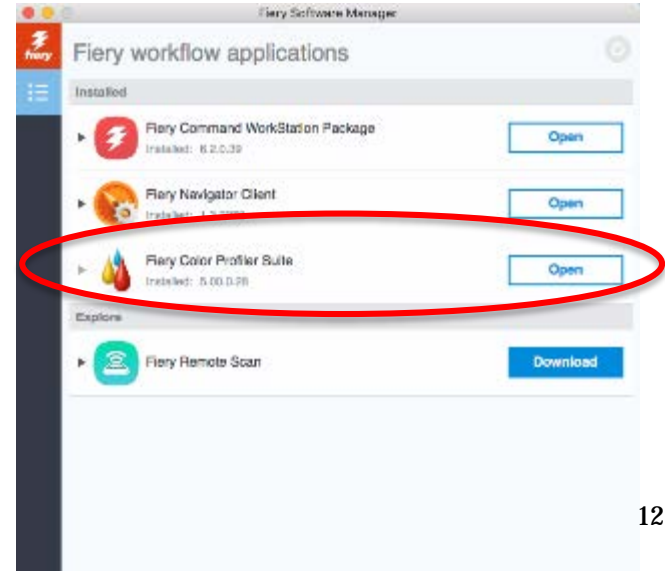


# Fiery Software Manager



# Fiery Software Manager

- Color Profiler Suite updater is used to install 5.0
- Fiery Software Manager replaces updater application
  - Alerts users for updates / upgrades after 5.0 is installed
  - Reports SMSA renewal date with link to renewal instructions



# Konica Minolta FD-9 sheet feeder support in all modules



- Sheetfeeder supported with QR code patch page identification
- Requires KM Terminal Application network server
  - Windows only supported at this time



# Additional resources

- For more information visit: [efi.com/cps](https://efi.com/cps)
  - [Download](#) the latest version
  - Sign-up for a free 30-day trial
  - Access to the [latest features](#)
  - Access to brochures, training and technical [resources](#)
  - Download [How-to](#) guides
  - Access to technical support and [user forums](#)

## Fiery Color Profiler Suite

Color management software and spectrophotometers



Integrated color management and measurement software for printing systems  
Fiery® Color Profiler Suite includes expert-level tools and works with spectrophotometers allowing you to:

- Create, edit and maintain color profiles
- Successfully match color to a color reference
- Match output across multiple printers to achieve shop-wide consistency

[Free Demo](#)

[View the PODI Product Briefing](#)

Color Profiler Suite also supports our EFI wide and superwide format [inkjet printers](#).

[Overview](#) [Features](#) [Resources](#) [Support](#) [Download](#) [Spectrophotometers](#)

# Additional resources

---

- Watch World of Fiery education webinars on color
  - [3 Key Steps to Getting the Right Color](#)
  - [ABC's of Producing the Best Match for Spot Colors](#)
  - [Best Practices for Matching Industry Color Standards](#)
  - [Achieving Great Output Quality with your Paper](#)
  - [Best Practices for Producing Outstanding Image Quality Results](#)



