

How to: Optimize color quality of documents



How to: Optimize color quality of documents

Feature overview

This how-to guide walks you through the key Fiery® color management capabilities that help you to:

- Achieve the best match for spot colors
- Correctly print transparencies and overprints every time
- Manage multiple color spaces in a single document
- Independently honor embedded profiles for CMYK, RGB, and grayscale images
- Improve low-resolution images
- Avoid registration imperfections
- Ensure black elements use black toner only

Objectives

- Apply print settings to reliably achieve the best quality output

Additional resources

For additional information on Fiery color settings, visit the Fiery Color and Imaging web page at fiery.efi.com/color, where you can find:

- Fiery Color Best Practice Settings document
- Fiery Color Best Practice Settings video

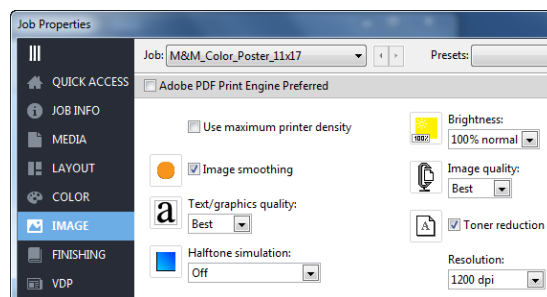
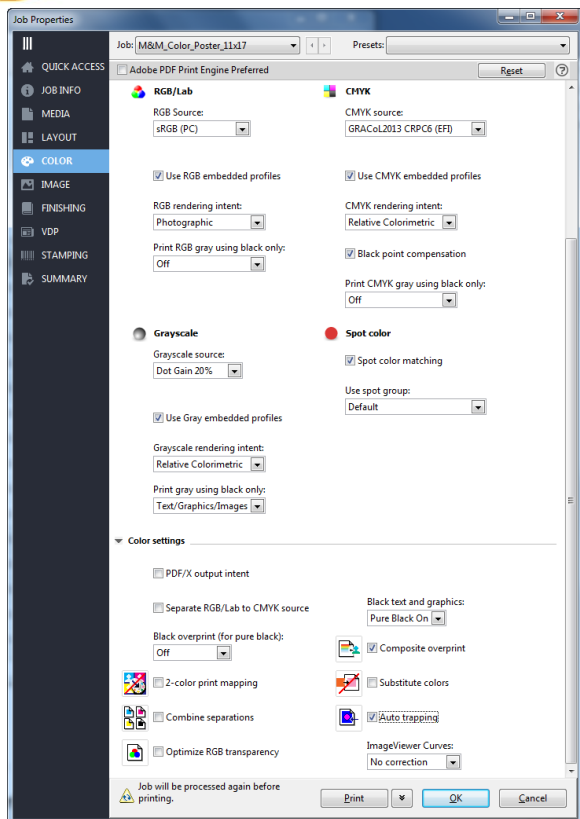
To access webinar recordings about color management, visit the World of Fiery series at efi.com/wofwebinars. Select past recordings for Fiery Color and Imaging products to view the "Fiery Command WorkStation® 6 — Configuring color settings and best practices" webinar.

For additional software downloads, training resources and more, go to [Fiery Online Resources](http://fiery.efi.com/resources).

Before you begin

- Open Fiery Command WorkStation 6 or later and connect to at least one Fiery server running Fiery FS300/FS300 Pro.
- Place the sample file, **efi_fiery_MnM_color_poster_SAMPLE_11x17** or **efi_fiery_MnM_color_poster_SAMPLE_A3**, in the Fiery server HELD queue. Drag the file to the Command WorkStation HELD list. Or you can use the import menu option in Command WorkStation.
- Make sure the printer and Fiery server have been calibrated before printing any output.

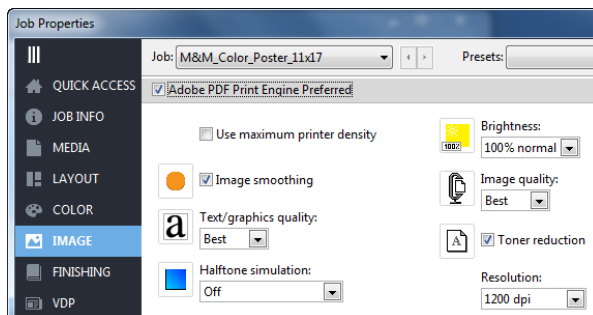
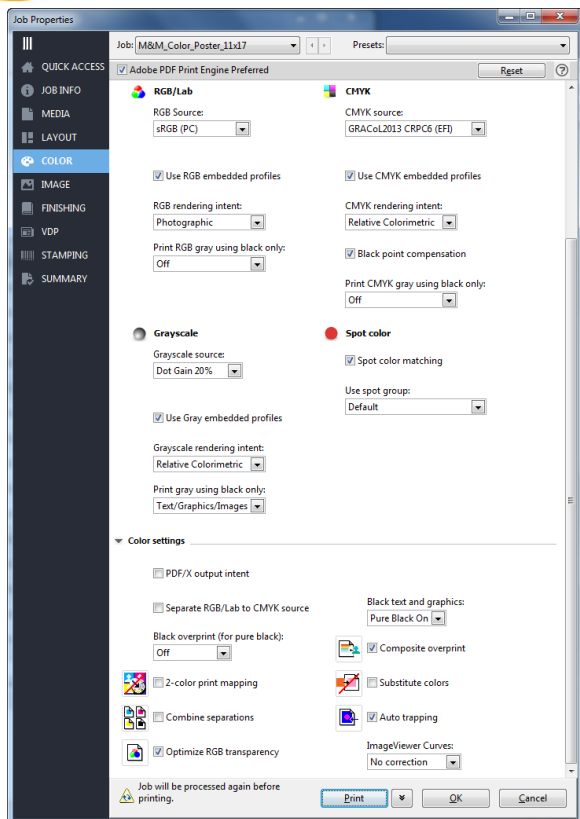
How to: Optimize color quality of documents



Apply print settings using the Adobe® PostScript print path

1. Locate the **efi_fiery_MnM_color_poster_SAMPLE_11x17** or **efi_fiery_MnM_color_poster_SAMPLE_A3** file in the HELD list, and right-click to select **Properties**.
2. Click the **Color** tab and set the following options:
 - a. Select the **Use RGB embedded profiles** check box.
 - b. Select the **Use CMYK embedded profiles** check box.
 - c. Select the **Use Gray embedded profiles** check box.
 - d. Select the **Spot color matching** check box.
 - e. In Black text and graphics, select **Pure Black On**.
 - f. Select the **Composite overprint** check box.
 - g. Select the **Auto trapping** check box.
3. Click the **Image** tab and set the following options:
 - a. Select the **Image smoothing** check box.
 - b. In Text/Graphics quality, select **Best**.
4. Click the **Media** tab and select **11x17** or **A3** Paper size.
5. Click **Print** to submit the job to the output device.

How to: Optimize color quality of documents



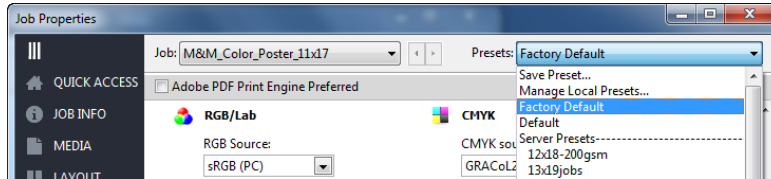
Apply print settings using the Adobe PDF Print Engine (APPE) print path

The APPE print path is only supported on external Fiery servers.

1. Locate the **efi_fiery_MnM_color_poster_SAMPLE_11x17** or **efi_fiery_MnM_color_poster_SAMPLE_A3** file in the HELD list. Then right-click to select **Properties**.
2. Click the **Adobe PDF Print Engine preferred** check box.
3. Click the **Color** tab and set the following options:
 - a. Select the **Use RGB embedded profiles** check box.
 - b. Select the **Use CMYK embedded profiles** check box.
 - c. Select the **Use Gray embedded profiles** check box.
 - d. Select the **Spot color matching** check box.
 - e. Select the **Optimize RGB transparency** box.
 - f. In Black text and graphics, select **Pure Black On**.
 - g. Select the **Composite overprint** check box.
 - h. Select the **Auto trapping** check box.
4. Click the **Image** tab and set the following options:
 - a. Select the **Image smoothing** check box.
 - b. In Text/Graphics quality, select **Best**.

5. Click the **Media** tab and select **11x17 or A3** Paper size.
6. Click **Print** to submit the job to the output device.

Compare optimized results with possible print errors in color reproduction



1. Locate the **efi_fiery_MnM_color_poster_SAMPLE_11x17** or **efi_fiery_MnM_color_poster_SAMPLE_A3** file in the HELD list. Then right-click select **Properties**.
2. Open the **Presets** drop down menu and select **Factory Default**.
3. Click the **Media** tab and select **11x17 or A3** Paper size.

For Fiery external servers:

4. Click the **Adobe PDF Print Engine preferred** check box.
5. Uncheck the **Composite overprint** check box.
6. Uncheck the **Spot color matching** check box.
7. Click **Print** to submit the job to the output device.
8. Compare print results with the ones using the PostScript and APPE print paths above.

For Fiery embedded or busted servers:

3. Uncheck the **Spot color matching** check box.
4. Click **Print** to submit the job to the output device.
5. Compare print results with the ones using the PostScript print path above.

How to: Optimize color quality of documents

Note:

Page two of this print sample file contains information to identify possible errors in the reproduction of design elements on page one. You can use it to reference the print setting that helps optimize color and imaging reproduction for each element.

Manor & Mason Color Poster Description



Possible errors in the reproduction of design elements

This print sample demonstrates key Fiery® color management capabilities:

- Achieves the best match for spot colors
- Correctly prints transparencies and overprints every time
- Manages multiple color spaces in a single document
- Independently honors embedded profiles for CMYK, RGB, and grayscale images
- Improves low-resolution images
- Helps avoid registration imperfections
- Ensures black elements use black toner only

The image on the right indicates many of the settings users can check to reliably achieve the best quality output.

For additional information on Fiery color settings, visit the Fiery Color and Imaging web page at fiery.efi.com/color, where you can find:

- Fiery Color Best Practice Settings document
- Fiery Color Best Practice Settings video

To access webinar recordings about color management, visit the World of Fiery series at efi.com/worldofwebinars. Select past recordings for Fiery Color and Imaging products to view the "Fiery Command WorkStation® 6 — Configuring color settings and best practices" webinar.

To properly configure print settings using the Fiery driver and Job Properties, select the following options:

<p>To render RGB transparencies with Adobe PDF Print Engine (APPE) processing path:</p> <ul style="list-style-type: none"> <input checked="" type="checkbox"/> Optimized RGB transparency <input checked="" type="checkbox"/> Use RGB embedded profiles 	<p>To achieve the best match for brand colors:</p> <ul style="list-style-type: none"> <input checked="" type="checkbox"/> Spot color matching 	<p>For CMYK or spot color overprints:</p> <ul style="list-style-type: none"> <input checked="" type="checkbox"/> Composite overprint 	<p>To avoid registration imperfections:</p> <ul style="list-style-type: none"> <input checked="" type="checkbox"/> Auto trapping 	<p>To improve the quality of low resolution images:</p> <ul style="list-style-type: none"> <input checked="" type="checkbox"/> Image smoothing 	<p>To respect a source RGB profile:</p> <ul style="list-style-type: none"> <input checked="" type="checkbox"/> Use RGB embedded profiles
---	--	---	---	---	---

<p>For CMYK or spot color overprints:</p> <ul style="list-style-type: none"> <input checked="" type="checkbox"/> Composite overprint 	<p>To respect a source CMYK profile:</p> <ul style="list-style-type: none"> <input checked="" type="checkbox"/> Use CMYK embedded profiles 	<p>For drop shadows on top of spot colors:</p> <ul style="list-style-type: none"> <input checked="" type="checkbox"/> Composite overprint 	<p>To reproduce 100% black elements:</p> <ul style="list-style-type: none"> <input checked="" type="checkbox"/> Black text and graphics: Pure Black On 	<p>To achieve the best match for brand colors:</p> <ul style="list-style-type: none"> <input checked="" type="checkbox"/> Spot color matching 	<p>To respect a source Grayscale profile:</p> <ul style="list-style-type: none"> <input checked="" type="checkbox"/> Use Gray embedded profiles
---	---	--	---	--	--

EFI fuels success.

We develop breakthrough technologies for the manufacturing of signage, packaging, textiles, ceramic tiles, and personalized documents, with a wide range of printers, inks, digital front ends, and a comprehensive business and production workflow suite that transforms and streamlines the entire production process, increasing your competitiveness and boosting productivity. Visit www.efi.com or call 650-357-3500 for more information.



Nothing herein should be construed as a warranty in addition to the express warranty statement provided with EFI products and services.

The APPS logo, AutoCal, Auto-Count, Balance, BESTColor, BioVu, BioWare, ColorPASS, Colorproof, ColorWise, Command WorkStation, CopyNet, Cretachrom, Cretaprint, the Cretaprint logo, Cretaprinter, Cretaroller, Digital StoreFront, DirectSmile, DocBuilder, DocBuilder Pro, DockNet, DocStream, DSFdesign Studio, Dynamic Wedge, EDOX, EFI, the EFI logo, Electronics For Imaging, Entrac, EPCount, EPPhoto, EPRegister, EPStatus, Estimate, ExpressPay, FabriVU, Fast-4, Fiery, the Fiery logo, Fiery Driven, the Fiery Driven logo, Fiery JobFlow, Fiery JobMaster, Fiery Link, Fiery Navigator, Fiery Prints, the Fiery Prints logo, Fiery Spark, FreeForm, Hagen, Inkintensity, Inkware, LapNet, Logic, Metrix, MicroPress, MiniNet, Monarch, OneFlow, Pace, Pecas, Pecas Vision, PhotoXposure, PressVu, Printcafe, PrinterSite, PrintFlow, PrintMe, the PrintMe logo, PrintSmith, PrintSmith Site, PrintStream, Print to Win, Prograph, PSI, PSI Flexo, Radius, Remoteproof, RIPChips, RIP-While-Print, Screenproof, SendMe, Sincolor, Splash, Spot-On, TrackNet, UltraPress, UltraTex, UltraVu, UV Series 50, VisualCal, VUTEK, the VUTEK logo, and WebTools are trademarks of Electronics For Imaging, Inc. and/or its wholly owned subsidiaries in the U.S. and/or certain other countries.

All other terms and product names may be trademarks or registered trademarks of their respective owners, and are hereby acknowledged.