

Digital StoreFront® Release Notes

Version 10 Update 1

Copyright © 2004 - 2018 by Electronics for Imaging, Inc. All Rights Reserved.

EFI Productivity Suite | *Digital StoreFront Release Notes*

May 2018 Digital StoreFront version 10 Update 1

Document version 1.0 / 45145977

This publication is protected by copyright, and all rights are reserved. No part of it may be reproduced or transmitted in any form or by any means for any purpose without express prior written consent from Electronics for Imaging, Inc. Information in this document is subject to change without notice and does not represent a commitment on the part of Electronics for Imaging, Inc.

Patents

This product may be covered by one or more of the following U.S. Patents: 4,716,978, 4,828,056, 4,917,488, 4,941,038, 5,109,241, 5,170,182, 5,212,546, 5,260,878, 5,276,490, 5,278,599, 5,335,040, 5,343,311, 5,398,107, 5,424,754, 5,442,429, 5,459,560, 5,467,446, 5,506,946, 5,517,334, 5,537,516, 5,543,940, 5,553,200, 5,563,689, 5,565,960, 5,583,623, 5,596,416, 5,615,314, 5,619,624, 5,625,712, 5,640,228, 5,666,436, 5,745,657, 5,760,913, 5,799,232, 5,818,645, 5,835,788, 5,859,711, 5,867,179, 5,940,186, 5,959,867, 5,970,174, 5,982,937, 5,995,724, 6,002,795, 6,025,922, 6,035,103, 6,041,200, 6,065,041, 6,112,665, 6,116,707, 6,122,407, 6,134,018, 6,141,120, 6,166,821, 6,173,286, 6,185,335, 6,201,614, 6,215,562, 6,219,155, 6,219,659, 6,222,641, 6,224,048, 6,225,974, 6,226,419, 6,238,105, 6,239,895, 6,256,108, 6,269,190, 6,271,937, 6,278,901, 6,279,009, 6,289,122, 6,292,270, 6,299,063, 6,310,697, 6,321,133, 6,327,047, 6,327,050, 6,327,052, 6,330,071, 6,330,363, 6,331,899, 6,340,975, 6,341,017, 6,341,018, 6,341,307, 6,347,256, 6,348,978, 6,356,359, 6,366,918, 6,369,895, 6,381,036, 6,400,443, 6,429,949, 6,449,393, 6,476,927, 6,490,696, 6,501,565, 6,519,053, 6,539,323, 6,543,871, 6,546,364, 6,549,294, 6,549,300, 6,550,991, 6,552,815, 6,559,958, 6,572,293, 6,590,676, 6,606,165, 6,633,396, 6,636,326, 6,643,317, 6,647,149, 6,657,741, 6,662,199, 6,678,068, 6,707,563, 6,741,262, 6,748,471, 6,753,845, 6,757,436, 6,757,440, 6,778,700, 6,781,596, 6,816,276, 6,825,943, 6,832,865, 6,836,342, RE33,973, RE36,947, D341,131, D406,117, D416,550, D417,864, D419,185, D426,206, D439,851, D444,793.

Trademarks

The EPS logo, AutoCal, Auto-Count, Balance, Best, the Best logo, BESTColor, BioVu, BioWare, ColorPASS, Colorproof, ColorWise, Command WorkStation, CopyNet, Cretachrom, Cretaprint, the Cretaprint logo, Cretaprinter, Cretaroller, DockNet, Digital StoreFront, DirectSmile, DocBuilder, DocBuilder Pro, DocStream, DSFdesign Studio, Dynamic Wedge, EDOX, EFI, the EFI logo, Electronics For Imaging, Entrac, EPCount, EPPPhoto, EPRegister, EPStatus, Estimate, ExpressPay, Fabrivu, Fast-4, Fiery, the Fiery logo, Fiery Driven, the Fiery Driven logo, Fiery JobFlow, Fiery JobMaster, Fiery Link, Fiery Prints, the Fiery Prints logo, Fiery Spark, FreeForm, Hagen, Inkensity, Inkware, Jetrion, the Jetrion logo, LapNet, Logic, MiniNet, Monarch, MicroPress, OneFlow, OPS, Pace, PhotoXposure, PressVu, Printcafe, PrinterSite, PrintFlow, PrintMe, the PrintMe logo, PrintSmith, PrintSmith Site, Printstream, Print to Win, Prograph, PSI, PSI Flexo, Radius, Rastek, the Rastek logo, Remoteproof, RIPChips, RIP-While-Print, Screenproof, SendMe, Sincolor, Splash, Spot-On, TrackNet, UltraPress, UltraTex, UltraVu, UV Series 50, VisualCal, VUTEk, the VUTEk logo, and WebTools are trademarks of Electronics For Imaging, Inc. and/or its wholly owned subsidiaries in the U.S. and/or certain other countries.

All other terms and product names may be trademarks or registered trademarks of their respective owners, and are hereby acknowledged.

Table of Contents

| | |
|--|-----------|
| Welcome to Digital StoreFront 10 Update 1 | 5 |
| Contact Information | 5 |
| Version Information..... | 6 |
| Cloud (EFI-Hosted) Installations | 7 |
| Customer-Hosted Installations: How to Obtain & Apply the Software | 7 |
| Note on Release Types: Upgrade and Update..... | 7 |
| Installing Digital StoreFront 10 Update 1 | 7 |
| The Digital StoreFront Forum is Online: Register Today | 9 |
| Important Notes and Notices | 9 |
| Operating System Support..... | 9 |
| System Requirements and Database Backup | 9 |
| SQL Server | 9 |
| Pause During Installation | 10 |
| Crystal Reports Installation..... | 10 |
| Digital StoreFront EULA | 10 |
| Support for TLS 1.2 Enhanced Security Features for Merchant Accounts | 10 |
| Email Notifications | 10 |
| AuctionInc | 10 |
| Customized SmartStore Storefronts | 11 |
| CyberSource (Self-Hosted Customers)..... | 11 |
| Server-Side Conversion of Microsoft Office Files..... | 11 |
| Digital StoreFront and Virtual Environments | 12 |
| Digital StoreFront and DNS Setup | 12 |
| StoreFront Studio | 12 |
| EFI VDP Support..... | 12 |
| Third-Party VDP Support: XMPie® and FusionPro® | 12 |
| Notes..... | 14 |
| Custom reports (EFI-hosted customers)..... | 14 |
| EFI Fiery JDF support..... | 14 |
| Storefront creation and editing | 14 |
| Self-hosted Digital StoreFront server migration | 14 |
| Discontinuance of Development & Operational Support for Classic StoreFronts..... | 14 |
| New Features & Enhancements in Digital StoreFront 10 Update 1..... | 14 |
| Features Supported in SmartStores and Not in Classic Storefronts..... | 14 |
| External System Connector (ESC) Data Changes | 15 |
| Issues Resolved in Digital StoreFront 10 Update 1 | 15 |
| Known Issues in Digital StoreFront 10 Update 1..... | 17 |
| System Requirements..... | 21 |
| Digital StoreFront Server Requirements | 21 |



| | |
|---|-----------|
| Client-Side Requirements | 23 |
| PrintMessenger | 23 |
| Remote Print Center (RPC) | 23 |
| SmartStores | 24 |
| EFI SmartCanvas Powered by DirectSmile | 24 |
| EFI VDP (Variable Data Product) Templates powered by DirectSmile | 25 |
| Requirements for EFI VDP Templates powered by DirectSmile server | 25 |
| Requirements for EFI VDP templates powered by DirectSmile client software | 25 |
| XMPie /FusionPro VDP (Variable Data Product) Server | 26 |
| Appendix A: Workflows for Reconciling CSS | 27 |
| Workflow 1 for SmartStores with Minor Customizations | 27 |
| Workflow 2 for SmartStores with Major Customizations | 29 |



Welcome to Digital StoreFront 10 Update 1

Digital StoreFront is EFI's award winning web-to-print platform. Digital StoreFront offers the industry's leading print buyer experience and onramp to a digital workflow, plus a best-of-class toolset for configuring and managing this printing e-commerce platform. Digital StoreFront 10 Update 1 introduces enhancements and addresses issues found in previous releases.

As we continue to evolve the product, the most important input comes from our existing customer base. We value your feedback. Submit feature requests to dsf.support@efi.com. Submit documentation requests to dsfdocumentation@efi.com.

Note As part of our commitment to continuously improve the quality of Digital StoreFront and address issues in a timely manner, we will be releasing updates when possible. Self-hosted customers, please be sure to visit www.efi.com/dsf periodically and click **Upgrade to the latest version** (on the right-hand side under **Learn More**) to download and upgrade to the latest version of Digital StoreFront to ensure that you are running the latest version of the software. Cloud-based (EFI-hosted) customers will be updated automatically.

Contact Information

EFI Support

| | |
|-----------------------------|---|
| Web Site: | http://www.efi.com/products/productivity-software/ecommerce-web-to-print/efi-digital-storefront/support/ |
| US Phone: | 1.855.EFI.4HLP (855-334-4457) |
| EU Phone: | +49 2102 745 4500 (Germany) |
| APAC Phone: | +61 7 3625 9200 |
| South America Phone: | +1 412-690-4321 |
| E-Mail: | dsf.support@efi.com |

Note For problems involving infrastructure (i.e., computers, networks, operating systems, backup software, printers, third-party software, etc.), contact the appropriate vendor. EFI cannot support these types of issues.

EFI Professional Services

| | |
|---------------------------|--|
| US Phone: | 651.365.5321 |
| US Fax: | 651.365.5334 |
| E-Mail: | ProfessionalServicesOperations@efi.com |
| Outside US E-Mail: | EMEAProfessionalServicesOperations@efi.com |

EFI Professional Services can help you perform EFI software installations, upgrades, and updates. This group can also help you implement, customize, and optimize your EFI software, plus offers a range of training options.

Version Information

Digital StoreFront 10 Update 1

| | | | |
|-------------------------------|--|--|---|
| <i>Software Version</i> | 10.0.100.23139 | | |
| <i>Database Version</i> | 10.0.100 | | |
| <i>System Software</i> | 45145975 | | |
| <i>Supported VDP Software</i> | <ul style="list-style-type: none"> • EFI VDP Templates powered by DirectSmile: <ul style="list-style-type: none"> • VDP Studio (client DSMG software): 6.5.0 • DSMI (server DSMI + DSMG software): 8.1.0 x64 • XMPie: 9.0.3 <ul style="list-style-type: none"> • Adobe InDesign CC Server v2017 • FusionPro: 10.0 | | |
| <i>Cross Media Software</i> | <ul style="list-style-type: none"> • DSMG: 6.5.0 • DSMI: 8.1.0 x64 (server software) • DSMX: 8.1.0 | | |
| <i>SmartCanvas</i> | <ul style="list-style-type: none"> • 8.1.0 <ul style="list-style-type: none"> • DSMG: 6.5.0 • DSMI: 8.1.0 • DSMX: 8.1.0 <p>Note EFI SmartCanvas powered by DirectSmile is available beginning with Digital StoreFront v. 9.2.</p> | | |
| <i>Supported MIS Software</i> | <ul style="list-style-type: none"> • Monarch: 2010.1, 2011.1.3.1, 2012.1.3.1, 2013.1.2.1, 2013.1.2.9, 2013.1.3.1, 2013.1.3.2, 2014.2.1.1, 2014.2.1.3, 2015.1.1.3, 2015.2.1.2, 2016.2.1, 16.2.1.1, 17.1.1 • Pace: 27.11-1202, 27.11-1202, 27.12-833, 28.0-31763095, 28.0-2670, 28.01-551, 28.02-620, 29.0-1651, 29.01-1015, 30.0-2062 • PrintSmith Vision with eFlow: 3.4.1.1190, 3.5.0.1323, 3.6.1.1409, 3.6.3.1463, 3.6.5.1475, 4.0.0.1672 • eFlow: 104, 5.0.0.11, 5.1.0.2 (build 5070), 6.0.0.20 (build 5079), 6.0.60093.30 • PrintSmith Classic: 3.6.5.1475, 4.0.0.1672 • Lector: 3.43.3941, 5.10.4169 • Gamsys: 5.1.1 Build 623, 5.10.4169, 6.3, 6.4 • PrintStream: 17.2.0300, 18.1.0100 • Radius: 18.200.0.58 | | |
| <i>Languages supported</i> | English (US) English (UK) French Italian | German Spanish Brazilian Portuguese Dutch Swedish Finnish | Norwegian Danish Russian Traditional Chinese Simplified Chinese Japanese |

Cloud (EFI-Hosted) Installations

- Cloud customers will be contacted with the date their sites will be upgraded.

Customer-Hosted Installations: How to Obtain & Apply the Software

Note on Release Types: Upgrade and Update

- Major releases are delivered by download and are referred to as “upgrade releases” (e.g., 9.0, 10.0).
- Minor releases are delivered via download only and are referred to as “update” or “dot releases” (e.g., 8.6, 9.2, 10.1 Update x).

Note Depending on when you are upgrading or updating Digital StoreFront, you may have to apply both a major and a minor release to get to the most current version of the software.

Installing Digital StoreFront

Note **If you are upgrading to Digital StoreFront Update 1 from Digital StoreFront 10:** You can download and install the software directly from the [FTP](#) site. After downloading the file, follow the instructions in the section *To install Digital StoreFront* beginning with step 4 on page 8.

Note **If you are upgrading to Digital StoreFront 10 Update 1 from v. 8.x or 9.x:** You must first obtain a license for Digital StoreFront v. 10 following the steps below:

1. Go to the [upgrade order form](#).
2. In the “Order Upgrade Contact Form,” for the “Licensed Version” select the **Digital StoreFront Customer Hosted** option.
3. Complete the remainder of the form and then click **Submit**.

Note: EFI will contact you within two (2) business days with information on receiving and installing your software.
4. After you receive the email from EFI, install v. 10 following the steps in the *To install Digital StoreFront* in the section below.

Note **If you are on a pre-8.x version of Digital StoreFront:** You must contact the EFI Professional Services team for assistance with your upgrade.

Note In an effort to improve our customer experience, beginning with Digital StoreFront 10.0, we have changed our software delivery method from FTP to a CDN.

Note Digital StoreFront 10 introduced eFlow license management, which does not require a USB dongle. For more information, see the *Digital StoreFront Installation Guide*.

Note If you are a self-hosted customer migrating your site to a Microsoft Windows 2016 server, please contact EFI Professional Services for assistance with your site migration.

To install Digital StoreFront

1. In the email you received from EFI, click the link for the Digital StoreFront 10 software installer and download it to a temporary folder.
2. Go to the temporary folder and double-click the **setup.exe** file to run the installer.
3. Follow the appropriate instructions below for your browser:
 - (Internet Explorer) When prompted to run or save the file, choose the **Save As** option, select a folder on your local drive in which to save the file, and then click **Save**. When the download is complete, click the file to begin the extraction process.

- (Firefox) When prompted on the Opening... dialog, click **Save File**. The file will download to your default download folder. When the download is complete, click the file to begin the extraction process.
 - (Chrome) The file download will begin automatically and be saved in your default download folder. When the download is complete, click the file to begin the extraction process.
4. After the files are extracted, go to the extraction folder.
 5. Double-click the *setup.exe* file.
 5. In the Welcome window, click **Next**.

Note Download the *Digital StoreFront 10.x Installation Guide* available from the link in the email you received from EFI and consult it before proceeding with the installation.

6. Specify a destination folder or accept the default (C:\inetpub\wwwroot\DSF\WebSite).

Note

1. Verify settings in the “Installation Summary” and then click **Next**.
2. During an update installation, a web page will open. Review the page results then close it.

7. Follow the instructions provided in the Finish window.

Note You are now finished *unless you need to install SmartCanvas* (see the section below).

To install SmartCanvas

If you have already installed SmartCanvas, for example when you upgraded to Digital StoreFront v. 9.x, please disregard this section):

Important The SmartCanvas Server component *cannot* be installed on the same server as Digital StoreFront. Please consult the SmartCanvas server component system requirements section on page 24 of this document and ensure that the server you will be installing SmartCanvas on meets or exceeds the system requirements.

If you will be installing SmartCanvas on a dedicated server (one that is not running Digital StoreFront, EFI VDP powered by DirectSmile, or EFI DirectSmile Cross Media):

Proceed to the installation and activation following the instructions in the *Digital StoreFront - SmartCanvas Installation Guide* (which you will obtain in a step below).

OR

If you are using EFI VDP Templates powered by DirectSmile or EFI DirectSmile Cross Media Marketing and want to install SmartCanvas on your existing EFI MarketDirect (formerly DirectSmile) server, SmartCanvas can be installed on that server but only with the assistance of the EFI MarketDirect (formerly DirectSmile) team who will contact you within five (5) business days. To schedule an installation appointment with the EFI MarketDirect Support Team, please visit <http://update.directsmile.com> and enter the SmartServer System ID you received with your Digital StoreFront license key.

Important: *You must not attempt to install SmartCanvas on your existing EFI VDP Templates powered by DirectSmile or EFI Cross Media Marketing server without first securing the assistance of the EFI MarketDirect team.*

1. After installing Digital StoreFront 10.x, download the following files from the links in the email you received from EFI:
 - SmartCanvas_[version number].exe file
 - *SmartCanvas Release Notes*
 - *Digital StoreFront – SmartCanvas Installation Guide* (PDF)
2. Double-click the **SmartCanvas_[version].exe** file.
3. After the file extracts, copy the SmartCanvas_SmartCanvas_[version number].exe (self-extracting exe) file into the C:\Temp folder on the SmartCanvas server and follow all instructions in the *Digital*

StoreFront – SmartCanvas Installation Guide (PDF) that you downloaded from the link in the email you received from EFI.

Note Read and follow the instructions in the *Digital StoreFront – SmartCanvas Installation Guide*.

4. On the SmartCanvas server, double-click **C:\Temp\SmartCanvas_SmartCanvas_[version number].exe** to extract.

The Digital StoreFront Forum is Online: Register Today

The Digital StoreFront Forum is a place where users of EFI's industry-leading Web-to-Print solution can come to share experiences with other members of the Digital StoreFront community. There are user forums for sharing information on integration with management information systems (MIS) such as Logic™, Monarch, Pace™, and PrintSmith™. Additional forums provide user-to-user information on variable data printing (VDP) with EFI VDP Templates powered by DirectSmile, FusionPro, and XMPie solutions and on integrations with EFI Fiery®, Fiery XF, and MicroPress® print systems.

Visit <http://dsfforums.efi.com/> to join the Digital StoreFront Forum today and enjoy the benefits:

- Interact with and learn from others in the Digital StoreFront user community.
- Share helpful tips and experiences on “best practices” and workflow solutions.
- Connect with the community of Digital StoreFront users.
- Receive periodic updates on upcoming events related to Digital StoreFront.

Important Please be aware that the Digital StoreFront Forum is *not* a place to request or receive formal technical support from EFI support personnel, engineers, or professional services. If you are experiencing an issue that is beyond the scope of help that other Digital StoreFront users can provide, please contact EFI's Digital StoreFront support team to receive formal, trackable support (contact information is on page 5).

Important Notes and Notices

Operating System Support

New installations of Digital StoreFront 10.x are supported only on Microsoft Windows Server 2008 R2, Windows Server 2012 R2, and Windows Server 2016 operating system.

System Requirements and Database Backup

- Please ensure that the server you are upgrading meets the minimum system requirements for Digital StoreFront 10.x as specified on page 20.
- **Upgrading customers who are connected to a local instance of SQL:** You must select the option during installation to perform a database backup before upgrading to Digital StoreFront 10.x.
- **Upgrading customers who are connected to a remote instance of SQL:** You should not select the installation option during installation to perform a database backup before upgrading to Digital StoreFront 10.x.

SQL Server

Digital StoreFront 10.x requires SQL Server 2012 (64-bit) or SQL Server 2014 (64-bit). If you complete the default installation of Digital StoreFront, which installs Microsoft SQL Server Express 2014, you will not (later) be able to configure Digital StoreFront to run with a lower version of SQL Server database cluster (e.g., a 2014 database cannot be mounted in a 2012 environment).

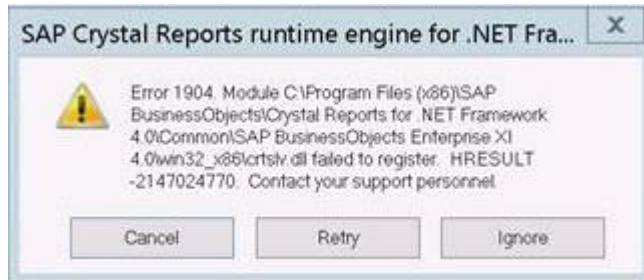
Note **SQL Express Upgrades:** The installer can only upgrade a locally installed version of SQL Server Express. If you do not have a locally installed version of SQL Server Express, you *must* upgrade SQL Server.

Pause During Installation

The installation process can appear to get stuck on “Stopping EFI.DSF.PdfService service” and “Stopping Digital StoreFront Conversion Service.” It is not stuck, however, but merely waiting for the services to stop and shut down. Please note that the wait can be 4–6 minutes for each service.

Crystal Reports Installation

Note that the error message below may show several times during installation of the Crystal Reports component. Simply click **Ignore** to continue installation and disregard the message.



Digital StoreFront EULA

Please be aware that if any member of the administrator group accepts the end user license agreement (EULA), it is accepted for all.

Support for TLS 1.2 Enhanced Security Features for Merchant Accounts

Beginning with v. 9.6 by default Digital StoreFront supports TLS 1.2 for all merchant account plugins.

Email Notifications

Please be aware that if you are on an older browser and using compatibility mode, you may not be able to add system variables to the following email notifications at either the site or the company level:

- General Message: Rejected User Registration
- Location Message: New Order Notification
- Print Shop Message: Order Status Change
- Buyer Message: Order Approved
- Buyer Message: Order Declined
- AuctionInc CSR E-Mail: Request to use EFI's AuctionInc Account id
- Spending Account Message: Spending Account Limit Exceeded during MIS Job Total Update
- Buyer Message: Background Upload Status
- Order Approval For Approvers

AuctionInc

Please direct all questions related to AuctionInc setup and operation to Digital StoreFront Technical Support (for contact information see page 5), *not* to AuctionInc Technical Support.

Customized SmartStore Storefronts

New releases of Digital StoreFront typically introduce new features that require changes and additions to the CSS (cascading styles sheet) styles that define the appearance of SmartStores.

Notes If you have not made any advanced customizations to the CSS of the default SmartStores, you do not need to take any action and can disregard this notice.

Classic storefronts will continue to work as before, and newly created sites will work with no issues.

If you have made changes to the CSS of your SmartStore storefronts and intend to use the new features, you will need to complete the appropriate action below to reconcile your customized CSS with the new CSS features to ensure that your SmartStore storefronts are displayed properly.

Recommended workflows:

- If you have made only minor customizations to your SmartStore storefront(s) CSS (such as changing the color of buttons or a typeface of certain label classes), we recommend that you complete "Workflow 1 for SmartStores with Minor Customizations" on page 27.
- If you have made more extensive changes to your SmartStore storefront(s) CSS (such as modifying the behavior of certain elements such as the hover action on certain button classes), we recommend that you complete "Workflow 2 for SmartStores with Major Customizations" on page 29.

CyberSource (Self-Hosted Customers)

This statement applies only to self-hosted Digital StoreFront customers who use CyberSource for payment processing:

Please be aware that if you have used Digital StoreFront's bulk user import (via the Export / Import page) and the state and/or zip code information data was invalid, certain credit card transactions will possibly fail. To mitigate this risk, you will need to do one of the following:

- If you wish to disable the auto-filling of user profile fields from Digital StoreFront in Cybersource page (i.e., thus requiring users to enter their full billing details with each transaction):
 - A. Go to **Administration > Platform Settings > Credit Card Management and Configuration**.
 - B. Click **Merchant Accounts**.
 - C. In the merchant accounts table, select the **Cybersource Secure Acceptance** check box for the merchant account you want to edit.
 - D. Click the **Edit** icon.
 - E. Under **Account Setup – Authorization (Mandatory Fields)**, select the **Disable Billing Address Autofill** check box.

OR

- If you would like to clear the invalid data, please contact the Digital StoreFront technical support team via the contact information on page 5.

Server-Side Conversion of Microsoft Office Files

For the conversion of Microsoft Office files to work correctly, you must make sure that Microsoft Office is running in 32-bit architecture to match Digital StoreFront's file conversion utility, which runs in 32-bit because it depends on other 32-bit applications to perform the file conversion. *Digital StoreFront does not support the 64-bit version of Microsoft Office at this time.* For a list of supported versions please see the System Requirements - Software and Component Requirements on page 21 of this document.

For Microsoft Excel files to convert properly, make sure the operating system's locale settings (i.e., region and language options) match the language used in Excel.

Digital StoreFront and Virtual Environments

- Digital StoreFront can be installed in a virtual environment. To license the software, EFI supplies customers with a USB dongle; therefore, the virtualization instance must have the ability to see a USB device at all times.
- Although EFI Digital StoreFront Technical Support will not consider you “out of contract” if you are running Digital StoreFront on a virtual machine, EFI does not provide technical support for virtual environments or for running Digital StoreFront in a virtual environment. For Digital StoreFront customers with a current support agreement, EFI will use commercially reasonable efforts to investigate potential issues with Digital StoreFront software running on a virtual machine. As part of that investigation, EFI may require the issue to be reproduced independently from the virtual machine environment. Where issues are confirmed to be unrelated to the non-virtual environment, EFI will support its Digital StoreFront software in a manner that is consistent with support provided when that software is not running in a virtual environment. To clarify: Though it is possible to run Digital StoreFront in a virtual environment, EFI does not provide technical support for virtual environments or for running Digital StoreFront in a virtual environment. EFI understands that Digital StoreFront can be used in a virtual environment if that environment supports USB (necessary for the dongle), and EFI will support the Digital StoreFront software (see the item above and the general Digital StoreFront system requirements). EFI will not be responsible for your virtual environment or the setup of your virtual environment.

Digital StoreFront and DNS Setup

EFI does *not* provide technical support for DNS setup in customer environments.

StoreFront Studio

As of Digital StoreFront 9.2, EFI eliminated StoreFront Studio and replaced it with two new desktop licenses:

- If you purchase EFI VDP Templates powered by Direct Smile, you will receive two Direct Smile VDP licenses – one for creating VDP templates to upload to Digital StoreFront and one for desktop VDP production.
- If you purchase Image Personalization, you will receive two Direct Smile VDP Studio licenses – one for creating VDP templates and personalized image sets to upload to Digital StoreFront and one for desktop VDP production.

EFI VDP Support

After performing a new or update install of Digital StoreFront, follow the steps below to ensure you are running the very latest version of the EFI VDP desktop application (i.e., the version with all the latest patches applied):

1. Open the EFI VDP desktop application.
2. Open the help module.
3. Download and install any available patches.

Third-Party VDP Support: XMPie® and FusionPro®

Note *XMPie should be installed and run on a separate server (not the Digital StoreFront server) as XMPie may require additional system resources that can affect the performance of Digital StoreFront.*

FusionPro should be installed and run on the Digital StoreFront server.

- **XMPie 9.0.3 Support**
 - Digital StoreFront supports XMPie 9.0.3 with Adobe InDesign Creative Cloud Server 2017.

Notes To obtain the current version of XMPie go to <http://w3.efi.com/support/overview/web-to-print-solutions/digital-storefront/upgrade-order-form>. Please select customer hosted or

cloud depending on which type you have. Please note that prior versions of XMPie that EFI has delivered will work with Digital StoreFront 8.x, so upgrading to the latest version is optional.

Be aware that there may be issues with XMPie templates built in XMPie uProduce versions 5 or earlier when they are processed in Digital StoreFront with XMPie version 6 or later (e.g., issue reference 29165 in which times were including the seconds—4:30 was rendered 4:30:00). You are advised to update your templates in XMPie uProduce v. 6 or later.

- XMPie contains two parts that can be downloaded, the XMPie mini-server and XMPie uDirect Standard/Classic.
 - **XMPie903-Miniserver.exe** contains the files needed to install XMPie for the server side functionality.
 - Copy this file to the server that will run the XMPie server-side application.
 - Double-click the exe file to uncompress the installer.
 - Execute the installer and follow the on-screen instructions.
 - **XMPie903-uDirect-designer.exe** contains the files needed to install XMPie client-side applications for PC and Mac, XMPie uDirect Standard/Classic and XMPie designer.
 - Copy this file to the computer.
 - Double-click the exe file to uncompress the installer.
 - For PC users: Execute the installer and follow the on-screen instructions for installing this on a PC.
 - For MAC users: Copy the DMG file from the MACOS folder to complete installation.
- XMPie licenses included:
 - 1 – Mini-server license
 - 1 – uDirect Standard/Classic license
 - Unlimited – Designer licenses
- **FusionPro Suite 10.0 Support**
 - FusionPro has several components: the FusionPro VDP Producer API, the FusionPro Desktop VDP Creator (which used to be called Server), and the FusionPro Designer.
 - FusionPro includes:
 - 1 - Producer license
 - 1 - Creator license
 - 2 - Designer licenses (i.e., for 2 installations)

Notes If Digital StoreFront is customer-hosted, and you are under an active maintenance agreement, you can order the upgrade disk at <http://w3.efi.com/support/overview/web-to-print-solutions/digital-storefront/upgrade-order-form>. You will need to provide your dongle number and a shipping account number to get the new software. The upgrade kit contains the licenses that enable FusionPro VDP Producer API and FusionPro Desktop VDP Creator installation.

A new FusionPro license is needed only for a major release of FusionPro (e.g., 9.0, 10.0). So if you have a license for FusionPro 9, you do not need to upgrade your license to run FusionPro 10.0.x. If you have a license for FusionPro 8 or earlier, however, you will need to obtain a license to run the latest version of FusionPro (i.e., 10.0.x).

Notes

Custom reports (EFI-hosted customers)

Custom reports for cloud-based (EFI-hosted) customers must be developed by EFI Professional Services. Cloud-based customers, please contact EFI Professional Services if you need to have custom reports developed. (For EFI Professional Services contact information, see page 5.)

EFI Fiery JDF support

A ticket template that offers both binding and stapling is possible in Digital StoreFront, but this combination is incompatible with JDF. In the rare event that a customer requests binding with stapling, Digital StoreFront's JDF job ticket will only request the binding. This is by design and is part of JDF.

Storefront creation and editing

When you create or edit storefronts, Digital StoreFront clears its cache to ensure that your storefronts are saved properly. After clearing the cache, the system will reload the pages on your site. While the pages are reloading, the performance of the site will be slower than normal. To minimize the impact on customer experience, EFI strongly recommends that you create and edit storefronts during non-peak hours.

Self-hosted Digital StoreFront server migration

If you are a self-hosted customer and are migrating to a different Digital StoreFront server, this procedure is not covered under your SMA Support Agreement with EFI. If you require assistance with this migration, you can engage the EFI Professional Services Group (please note that this is a chargeable service). For more information, contact Digital StoreFront Support (contact information is on page 5) who will facilitate the process.

Discontinuance of Development & Operational Support for Classic StoreFronts

As announced in the document *Digital StoreFront – EOL Statement 2016-2017*, effective with the release of Digital StoreFront v. 10.0, EFI discontinued engineering support for Classic Storefronts in Digital StoreFront and supports only SmartStore storefronts (introduced in 2014 to provide a buyer interface built using the latest web standards—HTML5 and responsive design—to provide greater consistency and compatibility across browsers and devices). As of the release of DSF 10, EFI no longer provides engineering support for classic storefronts (no further development or bug fixes).

Note Although existing classic storefronts will be retained and you will be able to continue to manage existing classic storefronts, we strongly encourage you to deploy all storefronts as SmartStores rather than classic storefronts.

New Features & Enhancements in Digital StoreFront 10 Update 1

- **MarketDirect (formerly DirectSmile) Cross Media 8 integration:** Digital StoreFront 10 Update 1 introduces support for MarketDirect Cross Media 8 campaigns.

Note For information on MarketDirect Cross Media v. 8, see the MarketDirect Cross Media 8.x release notes.

Features Supported in SmartStores and Not in Classic Storefronts

- Digital downloads (7.4)
- Product matrix (7.4)

- EFI VDP powered by DirectSmile (7.6)
- Direct mail integration – AccuZIP (7.6)
- Digital download enhancements (7.6)
- Company-level language management (7.6)
- Active Directory with Federated Identity Services (7.6)
- Entity storefronts (8.0)
- Single-Page Previews (8.2)
- Fulfillment Categories (8.2)
- Products Displayed in List or Grid View (8.2)
- Combo Mode for DirectSmile and FusionPro Products (8.2)
- Fast Shopping (8.2)
- Intelligent ticketing enhancements: ability to enforce and recommend ticket options during order process (8.2, 8.4)
- Dynamic Web Forms (and work only with the HTML5 Visual Product Builder, not with the classic product builder) (8.4)
- Cross Media Marketing (9.0)
- SmartCanvas (9.2)
- Job-level approvals (9.6)
- Approver job editing (9.6)
- Checkout as guest (9.8)

External System Connector (ESC) Data Changes

Note This note applies only to those customers who use the External System Connector (ESC).

With the new VAT model introduced in Digital StoreFront 8.6, multiple VAT rates can be applied to a single price component. A new element **ProductLevelTaxes** was added to the Digital StoreFront schema. This represents a sequence of **ProductLevelTax** element, enabling Digital StoreFront to send multiple product level tax rates for a single price component. This will be available only for the VAT taxation model.

Issues Resolved in Digital StoreFront 10 Update 1

- **Companies created in PrintSmith Vision**
Resolved the issue that was causing all companies created in PrintSmith Vision to default company users to the Administrators group rather than to the Registered Users group. (Issue Reference: 41332)
 - **Email notifications: URL path hyperlinks**
Customer email notifications now use *Click here* hyperlinks for URL paths. (Issue Reference: 42709)
 - **Login bypass for category deep links**
Resolved the issue that was preventing login bypass for category deep links. (Issue Reference: 42489)
 - **CCH SureTax and \$0.00 order amounts**
Resolved the issue that was causing the system in some cases to request tax amounts from SureTax for \$0.00 order amounts. (Issue Reference: 42066)
-

- **Category permission settings**

Resolved the category permission settings issues that was affecting categories that were shared with sub-entities. (Issue Reference: 41563)
 - **Preview link for products in a kit**

Resolved the issue that was preventing display of the *Preview* link for products in a kit. (Issue Reference: 41375)
 - **Email notifications: order URL link**

Resolved the issue with order URL links in buyer email notifications (i.e., they were not linking to the DSF order). (Issue Reference: 40751)
 - **Inventory counts for canceled or deleted orders**

Resolved the issue that was causing inaccurate product inventory counts when inventory was added back after an order was canceled for deleted. (Issue Reference: 40458)
 - **Print service category information order production XML**

Resolved the issue that was preventing the print service category name and the print service option from being reported in the DSF-generated order production XML for SmartCanvas and Ad hoc products. (Issue Reference: 40270)
 - **Attribute mapping in Product Matrix products**

Resolved the issue that was causing errors in mapping of attributes to correct products in Product Matrix products. (Issue Reference: 40255)
 - **Mapping Cross Media campaign products to a Product Matrix product**

Resolved the issue that was preventing Cross Media campaign products from being mapped to a Product Matrix product matrix combination. (Issue Reference: 40247)
 - **Designating Direct Mail type**

Resolved the issue that was preventing the system from correctly designating the Direct Mail type based on specified height and width. (Issue Reference: 40208)
 - **PxPay merchant account test**

Resolved the issue that was causing an error when a PxPay merchant account was tested. (Issue Reference: 39356)
 - **WPM merchant**

Resolved the issue that was preventing orders (with VAT taxation) transacted via WPM to produce an order in DSF. (Issue Reference: 38470)
 - **Shopping cart error**

Resolved the issue that was causing an application error that locked the shopping cart when no shipping address was saved and the system was trying update shipping price. (Issue Reference: 38215)
 - **Promo codes and zero payment**

Resolved the issue that was preventing the Payment page from automatically updating when zero payment was applicable after applying a promo code (i.e., the credit card payment option was still shown). (Issue Reference: 38137)
 - **Mixed impression mode pricing**

Resolved the issue that was causing pricing errors on mixed impression mode jobs in which buyers assigned a range of special pages using page-by-page exceptions. (Issue Reference: 38135)
 - **Show pricing summary option**

Resolved the issue that was causing the pricing summary to be displayed for a job in the shopping cart even when the “Show pricing summary” option was disabled on the ticket template. (Issue Reference: 29808)
-

- **SmartCanvas dimension value display**
Static product download option allows quantity larger than 1 Limited the number of decimal digits displayed for the dimensions of SmartCanvas products to 5. (Issue Reference: 28562)
- **Static product download quantity**
Limited the quantity of static products available for digital download to 1 (not the quantity specified for the print option). (Issue Reference: 28494)
- **Imported spending account user names**
Resolved the issue that was causing the User Name information associated with imported spending accounts to be the First and Last Names rather than the User Names. (Issue Reference: 27152)

Known Issues in Digital StoreFront 10 Update 1

- **DSFdesign Studio**
 - **PDF not included in exported zip file**
When a DSFdesign Studio template is exported, the PDF file is not included in the export zip file, which prevents the template from being imported properly. (Issue Reference: 24831)
 - **Top border color**
The color of the top border of the Design Studio page for any product does not change per the site's color theme. (Issue Reference: 28007)
- **EFI SmartCanvas**

Note: Limitations of SmartCanvas include:

 - No support for small format mobile devices (e.g., cell phones)
 - Maximum of 61 megapixels for uploaded images
 - Maximum document size limit is 200x200 inches
- **Text frames locking up in Microsoft Edge browser**
Text frames in SmartCanvas lock up in some instances in Microsoft Edge browser. (Issue Reference: DIRSMILE-2060)
- **Selecting an imposition from the production job ticket**
When a different imposition layout is selected for a SmartCanvas job from the Production Job Ticket and the artwork is regenerated, the preview of the production PDF will continue to show the default imposition until the Production Job Ticket page is manually refreshed. (Issue Reference: 29527)
- **Size of SmartCanvas gallery image thumbnails**
After an image from a Digital StoreFront image gallery is used on a design template, the size of the thumbnail in the SmartCanvas image gallery will increase. (Issue Reference: DIRSMILE-360)
- **Pricing SmartCanvas products with N-up and brochure impositions**
The N-up and brochure imposition settings set in SmartCanvas are used only to define the production PDF for the product. For pricing purposes, configure the N-up settings for the Digital StoreFront product associated with the design template on the Product > Settings page to be consistent with the imposition you defined for the template in the SmartCanvas designer. (Issue Reference: 30011)
- **Font size in large format SmartCanvas products**
On very large SmartCanvas products (e.g., a banner 200x200"), be sure to create the first used text style (i.e., used in a text object on the design template) with a large font size so that the sample text (e.g., "Enter text here") will be visible to buyers. (Issue Reference: 30084)

- **Production PDFs not generated for SmartCanvas products**

Production PDFs will not be generated for SmartCanvas products associated with a template that has an imposition layout with a special character(s) in its name. The Production Job Ticket will remain in a *waiting for PDF generation* state. Avoid using special characters when naming your SmartCanvas imposition layouts. (Issue Reference: 39366)

- **Miscellaneous**

- **CorelDRAW PDF conversion issues**

Due to a limitation in a third party component, CorelDRAW (CDR) files are not converted to PDFs correctly. (Issue Reference: 32897)

- **Inverted/missing colors in PDFs**

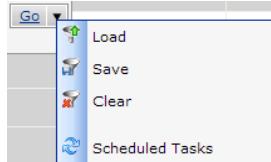
Due to a limitation in a third party component, automatic thumbnails in static products and files uploaded for ad hoc products may have missing or inverted colors in the preview. (Issue Reference: 32634)

- **Fiery XF mapping**

After media is mapped from the Fiery XF, print services are being created in Digital StoreFront (based on information in Fiery XF) for which the capabilities do not exist in Digital StoreFront. (Issue Reference: 26423)

- **Operator View filter option Scheduled Tasks**

The new link Scheduled Tasks in the filter on the Operator View is not currently working.



(Issue Reference: 23852)

- **Line breaks in email notifications**

Line breaks in email notifications are not being displayed in Microsoft Outlook due to a known issue in Outlook (by which it strips out line breaks per a proprietary algorithm).

Workaround: Add an additional period at the end of each line in the email notification (i.e., where a line break should fall). The line break will then work as expected (though there will be an extra period at the end of those lines).

- **Email variables**

Depending on the credit card processing system/gateway/method being used, some variables available for use in the "Credit card transaction failed" email notification may not have values available to populate the message at the time it is sent. This results from the manner and timing of when order information is saved in Digital StoreFront credit card payment workflows. (Issue Reference: 34524)

- **Uploading files for superwide format (SWF) products on classic storefronts on Chrome browser**

On classic storefronts using the Google Chrome browser, the **Browse** button is not available for buyers to upload a file for a superwide format (SWF) product. (Issue Reference: 35646)

- **Job weight not calculating correctly for N-up enabled products**

When a product's final production dimensions are smaller than the media dimensions (because n-up is enabled), the weight per finished item is not being calculated correctly (i.e., the full media weight is not used). (Issue Reference: 26760)

Workaround: You can resolve the issue by including the Final Width and Height print service on the Ticket Template associated with the product and selecting the default size in the product settings.

Note The Final Width and Height print service does not need to be displayed to the buyer for this to work.

- **USAePay payment processing order number**

The order number for all orders paid for with USAePay payment processing will be reported at - 1 on the Payment Approved confirmation window. (Issue Reference: 29869)

- **MIS orders**

MIS orders are not going to the MIS when the administrator changes the status from Approval Required to Approved/User Approved. (Issue Reference: 28162)

- **SmartStores**

Note About SmartStores in v. 9x:

1. On SmartStore storefronts, only the basic page in Company Order History is available; on Classic storefronts, the order details page continue to be available.

2. In the CSR workflow, the Search page uses the Classic storefront theme.

3. When a text logo is used for a SmartStore storefront, and an administrative user opens the Administration page, no logo is shown in the banner.

To use the following features introduced in v. 8.2, Fast Shopping, Fulfillment Shopping, and List View on a storefront, the CSS for that storefront must be reconciled with any previous customizations.

- **Shopping cart change print shop option**

The option to change the print shop is not available on all pages of the shopping cart in SmartStores. (Issue Reference: 27897)

- **File uploads**

No message is displayed after files are uploaded on the My Saved Files > Add Files page in SmartStores. (Issue Reference: 28017)

- **SmartStore Builder**

The last name / first name link in the upper right hand corner of the SmartStore Builder reloads the current page. (Issue Reference: 21366)

- **Portrait mode with keypad on iPad**

When a buyer is using an iPad in portrait mode and the keypad is opened, the display is distorted on the ad hoc product customization page in the Visual Product Builder. (Display in landscape mode is correct.) Note that it is recommended that users disable Private Browsing on mobile devices when using SmartStores. (Issue Reference: 28175, 29870)

- **Shopping cart calendar**

The arrows to change the month on the calendar in the Shopping Cart are missing on the Magic SmartStore storefront theme in Internet Explorer 10. (Issue Reference: 19152)

- **Captcha code during registration**

When a buyer is registering on a mobile device and if Captcha code security is enabled, a new Captcha code is shown after the buyer chooses a print shop. (Issue Reference: 19643)

- **Static products and page-level modifications**

Administrator-defined page-level modifications – such as adding blank pages, deleting pages, or rearranging pages – are not reflected in the SmartStore UI for static products. (Issue Reference: 26624)


- **Variable Data Products (VDP)**

- **EFI VDP: Post-upgrade unable to render products**

EFI VDP may be unable to read Basic VDP job databases after upgrade to v. 7.8.6.

Workaround:

- (1) Open Control Panel and navigate to **Add and Remove Programs**.
- (2) Locate the program **Microsoft Access Database Engine 2010**.

| | | | | |
|---|-----------------------|------------|--------|----------------|
|  Microsoft Access database engine 2010 (English) | Microsoft Corporation | 28.11.2017 | 110 MB | 14.0.7015.1000 |
|---|-----------------------|------------|--------|----------------|

- (3) If there are two entries, a 32-bit and a 64-bit version of the Microsoft Access Engine 2010, please uninstall both engines and reinstall the 32-bit version.
- (4) Restart all production servers to ensure that the VDP components are using the 32-bit version.

- **XMPie products: DIAL text fields not available for mapping**

DIAL text fields in XMPie products are not available for mapping on the Map Data page. (Issue Reference: 23589)

- **Auto submit does not work for batch mode EFI VDP Templates powered by DirectSmile products**

Auto submit functionality is not working for batch mode EFI VDP Templates powered by DirectSmile products. (Issue Reference: 31785)

- **VAT Calculation**

VAT and order pricing are miscalculated when a buyer reorders a product whose VAT rate has been changed between the original order and reorder. This issue occurs in the following scenario: Buyer A orders product B with a VAT rate set at rate X (e.g., 8%). The administrator then changes the VAT rate of product B to rate Y (e.g., 10%). Buyer A then reorders product B. Result: The VAT and order pricing calculations are incorrect. (Issue Reference: 33158)



System Requirements

Please ensure your system meets the following minimum requirements before beginning the installation process.

Important Please ensure your Windows operating system is fully up to date and that you have installed all available security patches and updates prior to installation. Disable all pop-up blockers before installing.

Additional guidelines on the IT environment requirements for running Digital StoreFront are available upon request from Digital StoreFront Technical Support (for contact information see page 5).

Digital StoreFront Server Requirements

Note Digital StoreFront should be installed and run on a dedicated separate server.

Hardware Requirements

| | |
|-----------------------|--|
| <i>Processor</i> | 1.8+ GHz processor |
| <i>RAM</i> | 3+ GB Note Rendering files (such as in the display graphics industry) will require more RAM. We suggest a minimum of 12 GB for such environments including customers who plan to utilize SmartCanvas products. |
| <i>Hard disk</i> | 250+ GB Note 25+ GB hard disk space must be available on the operating system drive even if Digital StoreFront is installed on a different drive. This accommodates components that are installed on the operating system drive such as Windows Updates, Microsoft SQL Server, and third-party components. |
| <i>External Ports</i> | 1 Ethernet 10/100/1000 BaseT NIC |
| <i>Display</i> | Monitor that supports 1024 x 768 or higher resolution |

Software and Component Requirements

| | |
|---|--|
| <i>Operating System</i> | Digital StoreFront server supports only the operating systems listed below: <ul style="list-style-type: none"> • Microsoft Windows Server 2008 R2 (64-bit) with IIS 7 / Message Queuing • Microsoft Windows Server 2012 R2 (64-bit) with IIS 8 / Message Queuing (Standard) • Microsoft Windows Server 2016 (64-bit) with IIS 10 / Message Queuing (Standard) Note The server must be set up as an Application Server and not as a File Server for Digital StoreFront to install properly. |
| <i>For Digital StoreFront Site Administration</i> | <ul style="list-style-type: none"> • Microsoft Windows Note Digital StoreFront website administration (the functionality on the Administration pages) is supported <i>only</i> on a machine running Microsoft Windows <ul style="list-style-type: none"> • Java Runtime Environment (JRE) 1.8 Note Please install the 32-bit version of Java even though you are on a 64-bit machine because the DSFdesign Studio uses Flex, which does not support 64-bit Java. |
| <i>For Server Side PDF Conversion</i> | Microsoft Office 2007, 2010, or 2013 Professional (32-bit) with .NET programmability option set to "Run from My Computer" for all applications in the Office suite. |
| <i>For File Preflighting</i> | Java Runtime Environment (JRE) 8 |

| | | |
|--|--|---|
| <i>Web Browser</i> | Internet Explorer 8, 9, 10, 11 Mozilla Firefox 57, 58, 60 Safari 10.0, 11.0 (Mac) | Google Chrome 63, 64, 66 Microsoft Edge 38 Opera 51 |
| | Note HTML5 is not supported on Internet Explorer 8 and 9. | |
| <i>Database Server</i> | Microsoft SQL Server Express 2014 (64-bit) is included with the installation and will be installed if no local SQL components are present on the installation computer. <i>Optional (Customer Supplied):</i> <ul style="list-style-type: none"> • Microsoft SQL Server 2012 Standard or Enterprise • Microsoft SQL Server 2014 Standard or Enterprise Important Digital StoreFront 9.x requires SQL Server 2012 or 2014 (64-bit). If you complete the default installation of Digital StoreFront, which installs Microsoft SQL Server Express 2014, you will not later be able to configure Digital StoreFront to run with a lower version of SQL Server database cluster (e.g., a 2014 database cannot be mounted in a 2012 environment). <i>SQL Express Upgrade:</i> The installer can only upgrade a locally installed version of SQL Server Express. If you do not have a locally installed version of SQL Server Express, you <i>must</i> upgrade SQL Server. | |
| <i>.NET Framework</i> | Microsoft .NET Framework 4.5 is required | |
| <i>MicroPress Support Requirements</i> | To enable MicroPress integration version 7 or higher is needed | |
| <i>Fiery JDF Connector Support Requirements</i> | For complete information on supported Fiery devices and the hardware and software requirements for integrating Fiery devices with Digital StoreFront via the Fiery JDF Connector, please visit: http://www.efi.com/products/fiery-servers-and-software/fiery-integration/fiery-jdf/overview/ Note Digital StoreFront was tested with XF version 6.0. | |
| <i>Requirements for MIS connectivity through PNI (PrintNet Integrator); note Pace MIS does not use the PNI</i> | The computer on which you install the PNI must meet the following requirements: <ul style="list-style-type: none"> • Only the operating systems listed below are supported: <ul style="list-style-type: none"> ○ Windows 2003, Windows 2000, or Macintosh OS X 10.3.9 and 10.4.5 • 512+ MB RAM • 200+ MB free disk space • An Internet accessible static IP address. The address must be an Internet facing address that allows inbound traffic on port 10443 (HTTPS) and outbound traffic on port 80, 443, and 9443 (9443 is for PrintSmith only). • Outbound access to the Internet, an “always on” type of connection | |
| <i>Background Uploader (for Submitting Wide Format Product Files)</i> | Operating System: Only the operating systems listed below are supported: <ul style="list-style-type: none"> • Windows 2003, Windows Vista, Windows 7, Windows 2008, Windows 8 Note Digital StoreFront supports 32-bit and 64-bit operating systems. <ul style="list-style-type: none"> • Mac OS 10.8, 10.9, 10.10 Other Software: Java Runtime Environment (JRE) 1.8 and higher | |

Client-Side Requirements

PrintMessenger

Windows

| | | |
|---|--|---|
| <i>Processor</i> | 1+ GHz processor | |
| <i>RAM</i> | 1+ GB | |
| <i>Hard Disk</i> | 500+ MB available hard disk space | |
| <i>Operating System</i> | Only the operating systems listed below are supported: <ul style="list-style-type: none"> Windows Server 2003 SP2, Windows Vista, Windows 7, Windows 8, Windows 10, Windows Server 2008 R2, Windows Server 2012 R2 Note Digital StoreFront supports 32-bit and 64-bit operating systems. | |
| <i>Web Browser</i> <i>*Pop-ups must be enabled</i> | Internet Explorer 8, 9, 10, 11 Mozilla Firefox 57, 58, 60 Safari 10.0, 11.0 (Mac) | Google Chrome 63, 64, 66 Microsoft Edge 38 Opera 51 |
| <i>Other Software</i> | <ul style="list-style-type: none"> Microsoft .NET Framework 3.5 and all related Service Packs (SPs) and updates (only version 3.5 – not a higher version – is supported) Adobe Acrobat Reader 10, 11 Adobe Flash Player 10 | |
| <i>Windows Terminal Services Environment</i> | Citrix Note PrintMessenger is supported in a Citrix environment. | |
| <i>Display</i> | Monitor that supports 800 x 600 or higher resolution | |

Macintosh

| | | |
|-------------------------|--|--|
| <i>Processor</i> | G4+ | |
| <i>RAM</i> | 1+ GB | |
| <i>Hard Disk</i> | 500+ MB available hard disk space | |
| <i>Operating System</i> | Only the operating systems listed below are supported: <ul style="list-style-type: none"> Macintosh OS 10.11 or later | |
| <i>Web Browser</i> | Apple Safari 10.0, 11.0 Mozilla Firefox 57, 58, 60 Chrome 64, 66 | |
| <i>Other Software</i> | Adobe Acrobat Reader 8, 9, Adobe Flash Player 10 | |
| <i>Display</i> | Display that supports 800 x 600 or higher resolution | |

Remote Print Center (RPC)

Hardware and Software

| | | |
|-------------------------|---|--|
| <i>Processor</i> | 2+ GHz processor | |
| <i>RAM</i> | 512+ MB | |
| <i>Hard Disk</i> | 1 GB available hard disk space (more recommended) | |
| <i>Operating System</i> | Only the operating systems listed below are supported: <ul style="list-style-type: none"> Windows 2008 with IIS 7.0 / Message Queuing, Windows Vista, Windows 7, Windows 2012 R2, Windows 8, Windows 10 Note Digital StoreFront supports 32-bit and 64-bit operating systems for RPC. | |
| <i>.NET Framework</i> | Microsoft .NET Framework 4.5 | |
| <i>Web Browser</i> | Internet Explorer 8, 9, 10, 11 | |

Display Display that supports 800 x 600 or higher resolution

SmartStores

Mobile Device Platforms

| | | |
|----------------|---|----------------------------------|
| <i>Devices</i> | iPAD iPhone 5 or later Android Tablet | Windows Tablet Android Mobile |
|----------------|---|----------------------------------|

Operating Systems

Operating Systems Only the operating systems listed below are supported:

- Windows 8 or later
- iOS 11.2
- Android 7, 8

Browsers

Browsers SmartStores will work only on the following browsers:

- Internet Explorer 10+
- Google Chrome
- Mozilla Firefox
- Microsoft Edge
- Apple Safari
- Opera

Note SmartStores will **not** work on Internet Explorer 7, 8, or 9.

To accommodate site visitors who are still using these earlier versions of Internet Explorer, it is best to create a classic storefront version of any SmartStore that you create. That way, when a visitor to your site is on one of the older browsers, Digital StoreFront will automatically display the classic version.

Note Digital StoreFront does have a legacy browser customization feature to jump-start the process of creating the classic version of a SmartStore.

EFI SmartCanvas Powered by DirectSmile

Important Before attempting to install EFI SmartCanvas, please read the section “Installing Digital StoreFront” on page 7 in its entirety.

Requirements for SmartCanvas Server

Processor 64-bit processor, minimum 1.5 GHz and 4 Virtual Cores

RAM 8+ GB

Hard disk 500+ GB (failsafe storage with backup strategy recommended)

Accessibility Ports Out: 80, 443
Ports In: 80, 443

Important The SmartCanvas site should always be secured and must be accessible outside the network.

The SmartCanvas server is being set up as an application server.

Operating System Only the operating systems listed below are supported:

- Windows 2012 Server R2 Standard Edition or Microsoft Windows Server® 2008 x64 Standard Edition

Important EFI SmartCanvas should be installed and run on a separate server (not the Digital StoreFront server) as the application may require

Requirements for SmartCanvas Server

| | |
|----------------------------|---|
| | additional system resources that can affect the performance of Digital StoreFront. Self-hosted customers who are using EFI VDP powered by DirectSmile or EFI Cross Media Marketing powered by DirectSmile can install SmartCanvas on that server <i>with assistance of the EFI DirectSmile team.</i> |
| <i>Required components</i> | .NET Framework 4.0 must be installed on the computer before you install SmartCanvas |

EFI VDP (Variable Data Product) Templates powered by DirectSmile

Note The server that hosts EFI VDP Templates powered by Direct Smile requires an SSL certificate.

Requirements for EFI VDP Templates powered by DirectSmile server

Hardware and Software

| | |
|----------------------------|--|
| <i>Processor</i> | x86- or x64- processor with at least 1.5 GHz and 6 or more virtual cores |
| <i>RAM</i> | 12+ GB |
| <i>Hard disk</i> | 500+ GB (failsafe storage with backup strategy recommended) |
| <i>Accessibility</i> | <ul style="list-style-type: none"> Fixed IP-address with 100Mbit Internet connection or higher RDP access for the EFI network Ports Out: 80, 443 Ports In: 80, 443 To access Silverlight Server Monitor: 943, 4530–4535 Public SSL certificate (not included) |
| <i>Operating System</i> | <p>Only the operating systems listed below are supported:</p> <ul style="list-style-type: none"> Windows Server 2008 R2 or 2012 R2 with activated auto login <p>Note EFI VDP should be installed and run on a separate server (not the Digital StoreFront server) as the application may require additional system resources that can affect the performance of Digital StoreFront.</p> |
| <i>Required Components</i> | <p><i>Not Included:</i></p> <ul style="list-style-type: none"> WinZip v. 14 or higher MS SQL Server Web-, Standard Edition or higher (for Workflow usage) MS SQL Server Express or higher (without Workflow usage) <p><i>Included (installed as part of the server solution):</i></p> <ul style="list-style-type: none"> Redis 2.8 .NET Framework 4.0 Visual C++ 2005 SP1 Redistributable Package Microsoft Silverlight 5.1.30514.0 (required to use the functions and features of the DirectSmile Web front end) Visual C++ 2008 Redistributable Package Visual C++ 2010 Redistributable Package |
| <i>Display</i> | Monitor that supports 1024 x 768 or higher resolution |

Requirements for EFI VDP templates powered by DirectSmile client software

Note Please refer to the EFI VDP release documentation for client-side system requirements.

Hardware

| | |
|--|--|
| <i>Computer/Processor</i> | x86 or x64 processor with at least 1 GHz min Note Software runs only on Windows platform, not on MacOS. |
| <i>RAM (Memory)</i> | 2+ GB |
| <i>Storage</i> | 1 GB (250 GB for working directory recommended) |
| <i>Internet Access</i> | Activation and use of the software requires Internet connection |
| Software and Components | |
| <i>Operating System</i> | Only the operating systems listed below are supported: <ul style="list-style-type: none"> Windows XP, Windows Vista, Windows 7, 8, 10, Windows Server 2008 R2, Windows Server 2012 R2 or higher |
| <i>Required Components (not included)</i> | <ul style="list-style-type: none"> Adobe InDesign from version CS or CC (layout creation) MS Office or MS Access Database Engine 2007 and 2010 (database import) Adobe Reader (to preview any output on the server) |
| <i>Required Components (Installed as Part of Server)</i> | <ul style="list-style-type: none"> .NET Framework 4.0 Visual C++ 2005 SP1 Redistributable Package Visual C++ 2008 Redistributable Package |

XMPie /FusionPro VDP (Variable Data Product) Server

Hardware and Software

| | |
|--------------------------|---|
| <i>Processor</i> | 1.8+ GHz dual core processor |
| <i>RAM</i> | 2+ GB |
| <i>Hard Disk</i> | 100+ GB |
| <i>Operating System</i> | Only the operating systems listed below are supported: XMPie: Windows Server 2008 R2 or 2012 R2 Note XMPie should be installed and run on a separate server (not the Digital StoreFront server) as the application may require additional system resources that can affect the performance of Digital StoreFront. FusionPro: Windows Server 2008 or 2012 R2 Note FusionPro must be installed and run on the same server as the Digital StoreFront server. |
| <i>Zip Decompression</i> | WinZip v. 14 or higher |
| <i>Display</i> | Monitor that supports 1024 x 768 or higher resolution |

Software VDP Plug-Ins

| | |
|---------------------------------------|---|
| <i>FusionPro Designer/Creator</i> | <ul style="list-style-type: none"> Adobe Acrobat 8, 9, 10, 11 Additional plug-ins for Adobe InDesign CS5, CS5.5, CS6, CC, CC 2014, CC 2015 Note Please refer to the FusionPro release documentation for client-side system requirements. |
| <i>XMPie Designer/uDirect Classic</i> | Adobe InDesign CS5, CS5.5, CS6, CC17 Note Please refer to the XMPie release documentation for client-side system requirements. |


Appendix A: Workflows for Reconciling CSS

Note If you have made changes to the CSS of your SmartStore storefronts and intend to use one or more of the new features introduced in Digital StoreFront 7.6, you will need to complete the appropriate action below to reconcile your customized CSS with the new feature CSS to ensure that your SmartStore storefronts are displayed properly.



Workflow 1 for SmartStores with Minor Customizations

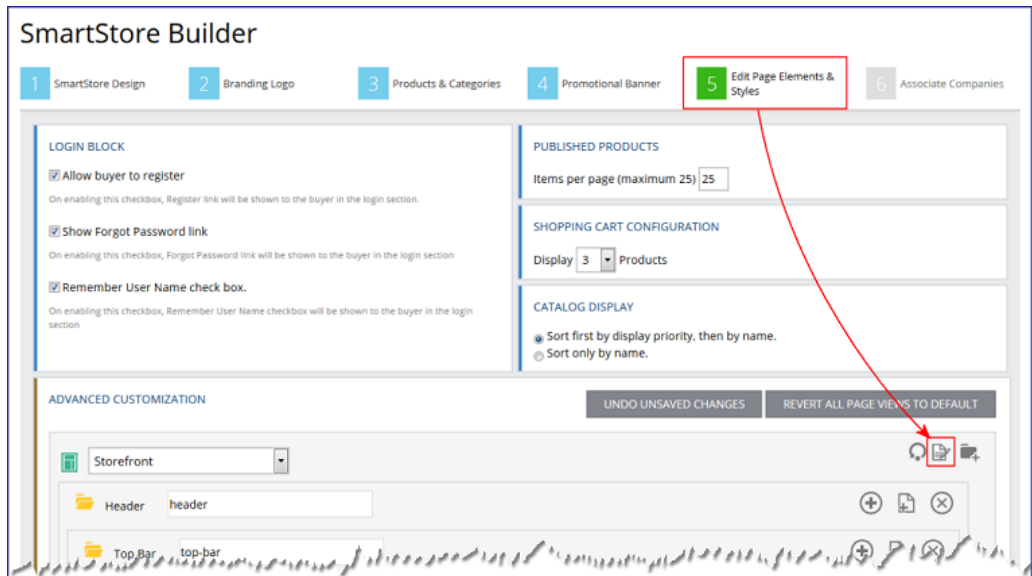
1. Go to Administration > Storefront Customization.


The screenshot displays the 'StoreFront Management' interface. At the top, there is a navigation bar with links for Home, Cart (1), My Account, Order Status, Print Shops, and Contact Us. Below this, a welcome message for Robert Martin is shown with a Logout link. The main content area is titled 'StoreFront Management' and includes a search bar, a 'Show: 10' dropdown, and a '1-4 of 4' indicator. A table lists four storefronts:

| Storefront | StoreFront Type | Associated Companies | Classic StoreFront for Legacy Browsers |
|---|-----------------|----------------------|---|
| GMO | Classic | | |
| GMO-StoreFront | SmartStore | GMO | Click here  |
| None StoreFront | Classic | None | |
| The Daily Grinder (Default) | Classic | The Daily Grinder | |

Below the table, there are buttons for 'Delete', 'Set as Default', and 'Duplicate SmartStore'. A 'Remaining Licenses: 9995 out of 9999' indicator and an 'Add StoreFront' button are also present. The bottom of the table shows a 'Show: 10' dropdown and a '1-4 of 4' indicator.

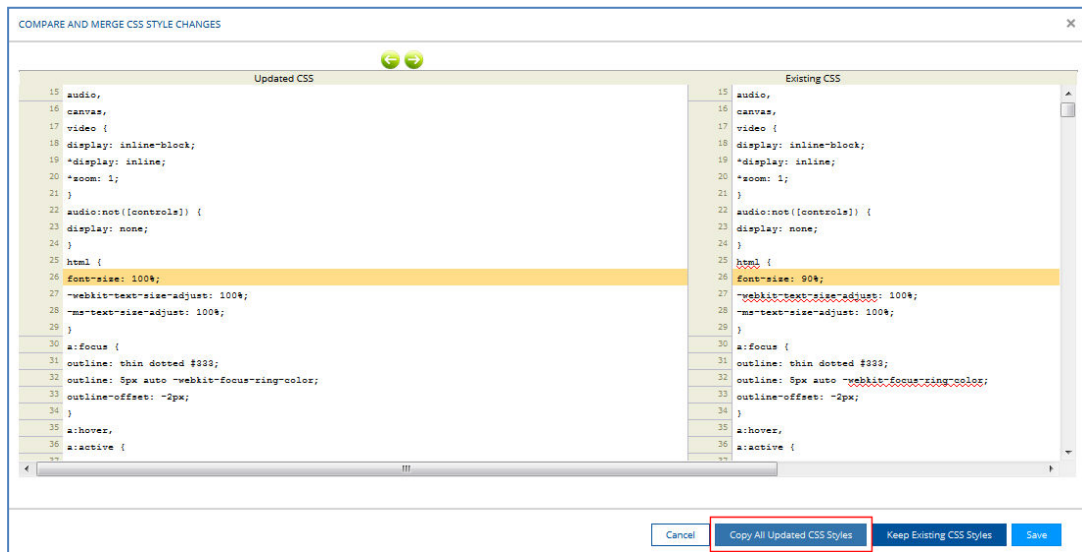
2. Make a backup of your existing CSS style sheet before making any changes to it so that you can recover if need be. To do so:
 - a. Open the SmartStore with the changes (i.e., the one with the change alert icon  next to it).
 - b. In the SmartStore Builder, open 5 Edit Page Elements & Styles.
 - c. Click the CSS editor icon  to open the style sheet.




- d. With your cursor in the CSS editor, press CTRL+A to select the entire contents of the window.
 - e. Press CTRL+C to copy the code to the clipboard.
 - f. Open Notepad or WordPad and press CTRL+V to paste the code into a new document.
 - g. Save the document.
3. Return to the StoreFront Management page.
 4. Click the change alert icon  to open the SmartStore that needs attention.

Note The change alert icon indicates that there is a difference between the existing CSS of a SmartStore storefront and the default CSS for SmartStore storefront (i.e., because a change was made to the CSS to support a new feature).

5. Click Compare & Merge.
6. Click Copy All Updated CSS Styles.

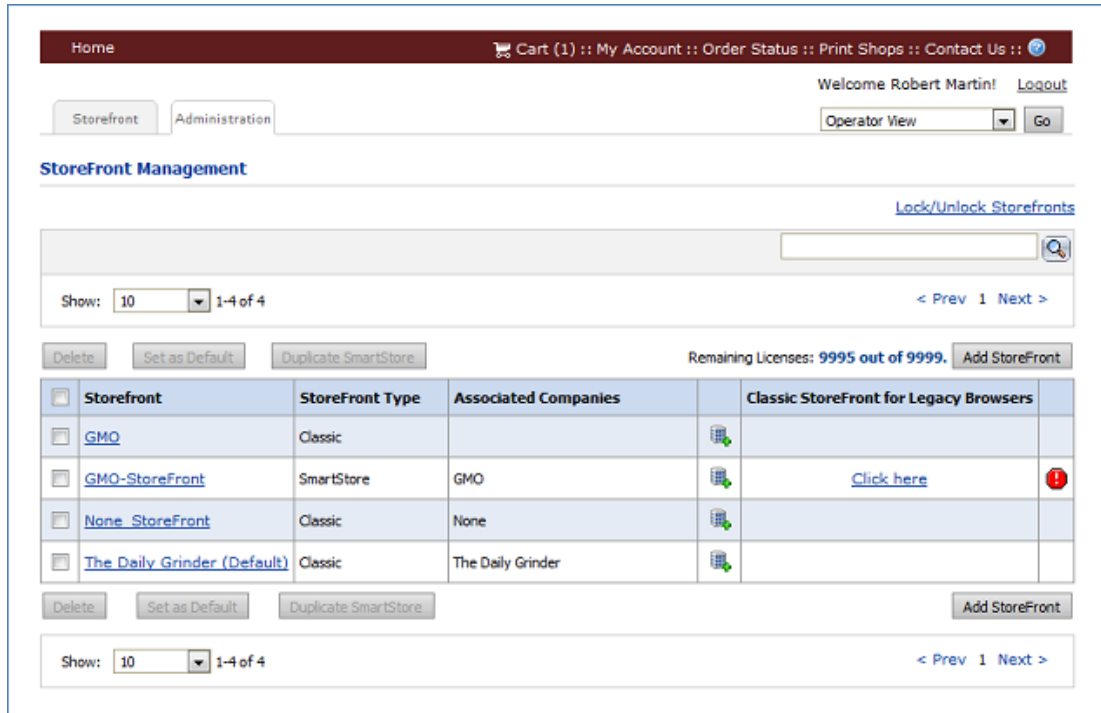


7. Click **Save**.
8. On the StoreFront Management page, open the SmartStore.

9. In the SmartStore Builder, open **5 Edit Page Elements & Styles**.
10. Click the CSS editor icon  to open the style sheet.
11. Reapply the previous customizations you had made.

Workflow 2 for SmartStores with Major Customizations

1. Go to Administration > Storefront Customization.



Home Cart (1) :: My Account :: Order Status :: Print Shops :: Contact Us ::

Welcome Robert Martin! [Logout](#)

Storefront Administration Operator View






Storefront Management

[Lock/Unlock Storefronts](#)



Search:

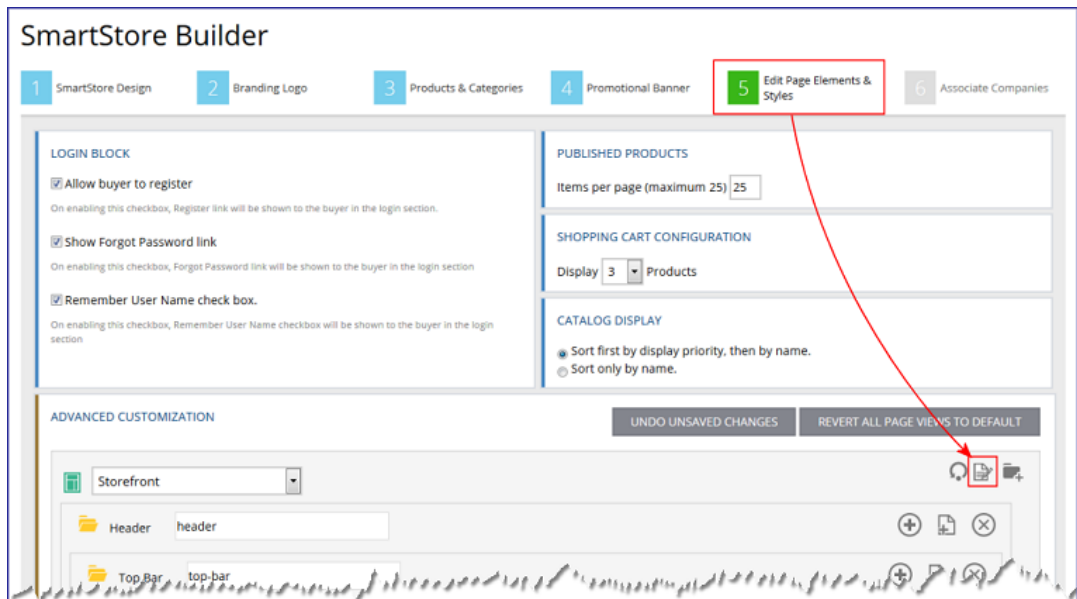
Show: 10 1-4 of 4 < Prev 1 Next >


Remaining Licenses: 9995 out of 9999.

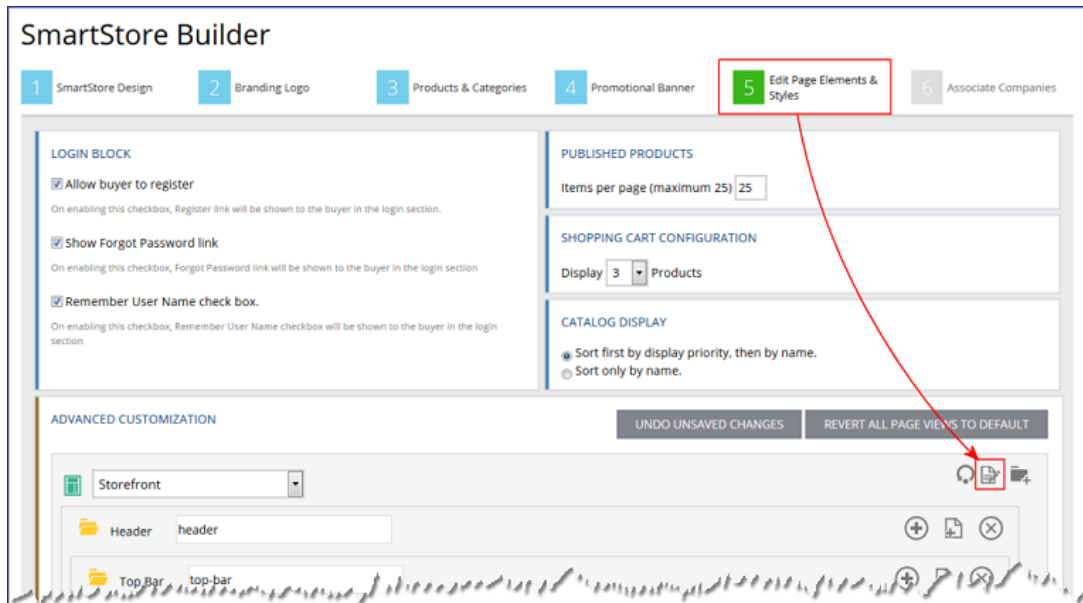
| <input type="checkbox"/> Storefront | StoreFront Type | Associated Companies | | Classic StoreFront for Legacy Browsers | |
|--|-----------------|----------------------|---|--|---|
| <input type="checkbox"/> GMO | Classic | |  | | |
| <input type="checkbox"/> GMO-StoreFront | SmartStore | GMO |  | Click here |  |
| <input type="checkbox"/> None StoreFront | Classic | None |  | | |
| <input type="checkbox"/> The Daily Grinder (Default) | Classic | The Daily Grinder |  | | |


Show: 10 1-4 of 4 < Prev 1 Next >

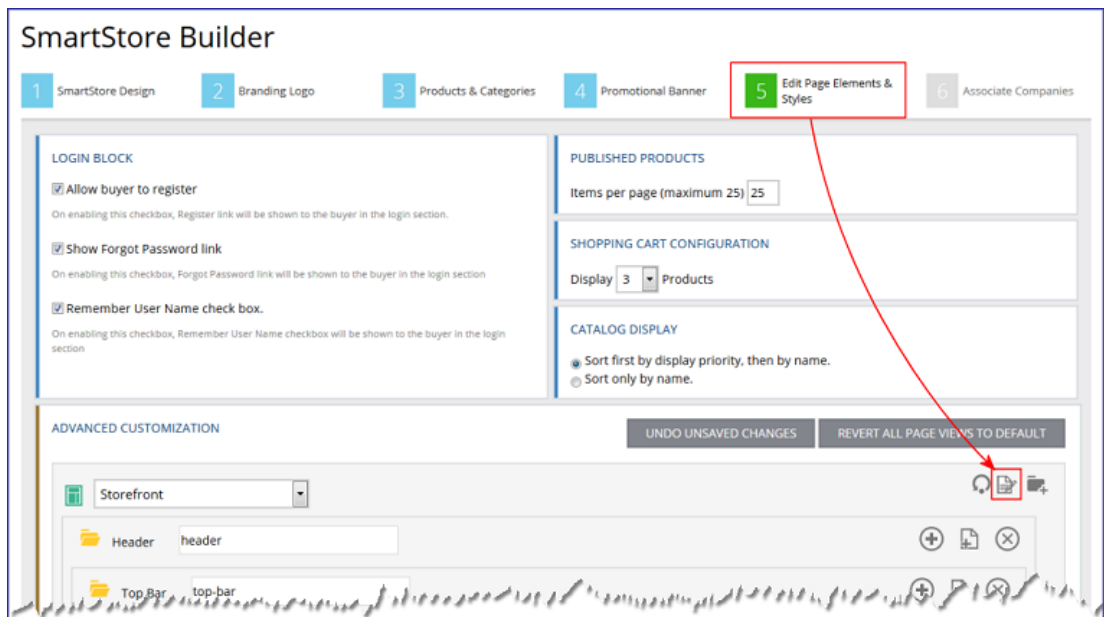
2. Make a backup copy of the SmartStore storefront so that you can recover if need be. To do so:
 - a. Select the SmartStore with the changes (i.e., the one with the change alert icon  next to it).
 - b. Click Duplicate SmartStore.
 - c. Click Copy CSS File from Base Theme.
 - d. Click Duplicate Smartstore.
 - e. Open the duplicated storefront.
 - f. In the SmartStore Builder, open **5 Edit Page Elements & Styles**.
 - g. Click the CSS editor icon  to open the style sheet.



- h. With your cursor in the CSS editor, press CTRL+A to select the entire contents of the window.
 - i. Press CTRL+C to copy the code to the clipboard. (This will be the latest default CSS with the changes made for the new features and functionality).
 - j. Open Notepad or WordPad and press CTRL+V to paste the code into a new document.
 - k. Save the document (e.g., as "New_CSS").
3. Return to Digital StoreFront and on the StoreFront Management page open your customized SmartStore storefront.
4. In the SmartStore Builder, open **5 Edit Page Elements & Styles**.
5. Click the CSS editor icon  to open the style sheet.



6. Copy the CSS:
 - a. With your cursor in the CSS editor, press CTRL+A to select the entire contents of the window.
 - b. Press CTRL+C to copy the code to the clipboard.
 - c. Open Notepad or WordPad and press CTRL+V to paste the code into a new document.
 - d. Save the document (e.g., as "Old_CSS").
7. Open both the "New_CSS" and "Old_CSS" documents in a merging application such as WinMerge (available as freeware from <http://winmerge.org/>).
8. Merge (or copy) only the new CSS code (i.e., in the "New_CSS" file) to the existing CSS code (i.e., in the "Old_CSS" file).
9. Saved the merged document (i.e., "Merged_CSS").
10. Open the merged document, select all of the CSS code, and copy it to the clipboard.
11. Return to Digital StoreFront and go to the StoreFront Management page.
12. Open the existing SmartStore storefront (the one you have previously customized).
13. In the SmartStore Builder, open **5 Edit Page Elements & Styles**.
14. Click the CSS editor icon  to open the style sheet.



15. With your cursor in the CSS editor, press CTRL+V to paste all of the merged code into the window.
16. Click **Save**.

Note To ensure that the Dynamic Web Forms feature introduced in Digital StoreFront 8.4 will work properly, after completing the merge verify that the below class is present in the merged style sheet:

```
a[disabled="disabled"] {  
  pointer-events: none;  
  cursor: default!important;  
  color: #dddddd!important;  
  background-color: transparent!important;  
}
```