

How-to:

Produce a simple booklet



How-to: Produce a simple booklet

Feature overview

Fiery® Booklet Maker is a driver-based imposition tool that allows users to print multiple pages of a print job from any application in a booklet style — without the need for more advanced imposition programs.

Booklet Maker allows users to intuitively navigate and select the appropriate booklet type and sub-options for the job through an intuitive graphic wizard workflow. It launches from either the Job Properties or the EFI™ driver.

Booklet Maker v4.0 provides a visual and interactive way to specify the page number of the source document for cover paginations, enabling it to correlate the correct page numbers with the correct cover pages.

Objectives

- Create a saddle-stitch booklet layout

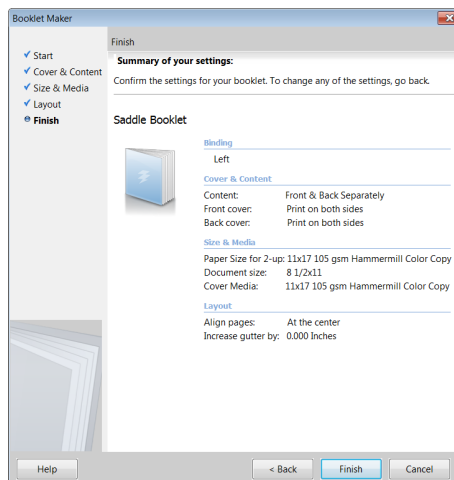
Additional resources

For additional software downloads, training resources and more, go to [Fiery Online Resources](#).

Before you begin

- Open Fiery Command WorkStation® 6 or later and connect to at least one Fiery server running Fiery FS350/FS350 Pro.
- Activate the Fiery Impose license on the computer Command WorkStation is running on.
- Place the sample file, **MnM_booklet_LTR_SAMPLE.pdf** or **MnM_booklet_A4_SAMPLE.pdf**, in the Fiery server Hold queue. Drag the file to the Command WorkStation Held list or use the Command WorkStation Import menu option.
- Ensure the printer and Fiery server have been calibrated before printing any output.

Each print engine will have different procedures for configuring and printing the finished document. Consult the user documentation for the printer and Fiery server that will be used for this how-to guide.



Create a saddle-stitch booklet layout

1. Select the **MnM_booklet_LTR_SAMPLE.pdf** or **MnM_booklet_A4_SAMPLE.pdf** file in the Command WorkStation Held list. Then right-click and select **Properties**.
2. In the Job Properties window, click the **Layout** icon. Then click **Booklet**.
3. To create a booklet layout using the Booklet Maker wizard, click **Launch Wizard**.
4. Select the **Booklet Type** to create. For this example, select **Saddle** and **Left**. Then click **Next** to continue.
5. For the **Cover and Content Source**, click **Front & Back Separately** From Document.
6. For the Outside Cover area, select the **Print Front Cover** and **Print Back Cover** check boxes.
7. For the Inside Cover area, select the **Print Front Cover** and **Print Back Cover** check boxes. Then click **Next** to continue.
8. For Size and Media, select the Paper Size of the paper for the Body of the booklet. For this example, select **11x17** or **A3**, or specify an appropriate Paper Catalog media for the Paper Size for 2-up.
9. Select the Size of the paper for the Cover. For this example, Click **Define Cover** and select **11x17** or **A3** or specify the appropriate media. Then click **Next** to continue.
10. In Layout, select **At the center** for body alignment. Then click **Next** to continue.
11. Review the settings and click **Finish** to close the Booklet Maker wizard.
12. If the printer supports a saddle-stitch finisher, click the **Finishing** icon.
13. Specify the **Folding**, **Stapler mode**, **Fold order** and **Output delivery** options that will correctly create a folded and stapled booklet. Each printer will have its own unique settings to correctly complete the booklet.
14. Specify any other Job Properties settings you want, such as **Expert Color** settings.
15. Click **Print** to submit the job to the printer.



EFI fuels success.

We develop breakthrough technologies for the manufacturing of signage, packaging, textiles, ceramic tiles, and personalized documents, with a wide range of printers, inks, digital front ends, and a comprehensive business and production workflow suite that transforms and streamlines the entire production process, increasing your competitiveness and boosting productivity. Visit www.efi.com or call 650-357-3500 for more information.



Nothing herein should be construed as a warranty in addition to the express warranty statement provided with EFI products and services.

The APPS logo, AutoCal, Auto-Count, Balance, BESTColor, BioVu, BioWare, ColorPASS, Colorproof, ColorWise, Command WorkStation, CopyNet, Cretachrom, Cretaprint, the Cretaprint logo, Cretaprinter, Cretaroller, Digital StoreFront, DirectSmile, DocBuilder, DocBuilder Pro, DockNet, DocStream, DSFdesign Studio, Dynamic Wedge, EDOX, EFI, the EFI logo, Electronics For Imaging, Entrac, EPCount, EPPhoto, EPRegister, EPStatus, Estimate, ExpressPay, FabriVU, Fast-4, Fiery, the Fiery logo, Fiery Driven, the Fiery Driven logo, Fiery JobFlow, Fiery JobMaster, Fiery Link, Fiery Navigator, Fiery Prints, the Fiery Prints logo, Fiery Spark, FreeForm, Hagen, Inkensity, Inkware, LapNet, Logic, Metrix, MicroPress, MiniNet, Monarch, OneFlow, Pace, Pecas, Pecas Vision, PhotoXposure, PressVu, Printcafe, PrinterSite, PrintFlow, PrintMe, the PrintMe logo, PrintSmith, PrintSmith Site, PrintStream, Print to Win, Prograph, PSI, PSI Flexo, Radius, Remoteproof, RIPChips, RIP-While-Print, Screenproof, SendMe, Sincolor, Splash, Spot-On, TrackNet, UltraPress, UltraTex, UltraVu, UV Series 50, VisualCal, VUTEK, the VUTEK logo, and WebTools are trademarks of Electronics For Imaging, Inc. and/or its wholly owned subsidiaries in the U.S. and/or certain other countries.

All other terms and product names may be trademarks or registered trademarks of their respective owners, and are hereby acknowledged.

© 2018 ELECTRONICS FOR IMAGING, INC. ALL RIGHTS RESERVED. | WWW.EFI.COM