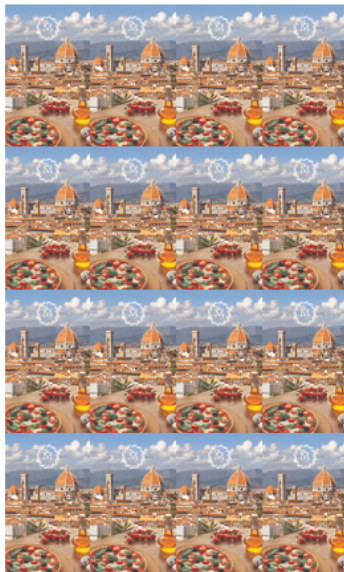
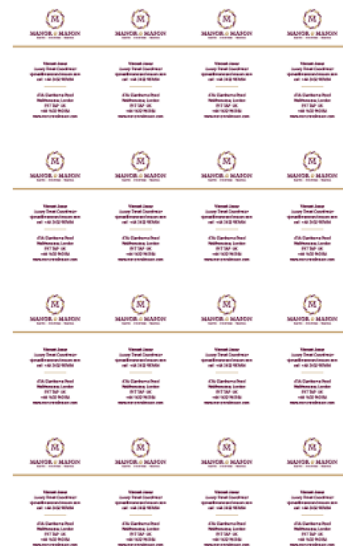


How-to:

Print multi-up jobs



Sheet 1 - Front
[Default Media](#)



Sheet 1 - Back
Default Media

How-to: Print multi-up jobs

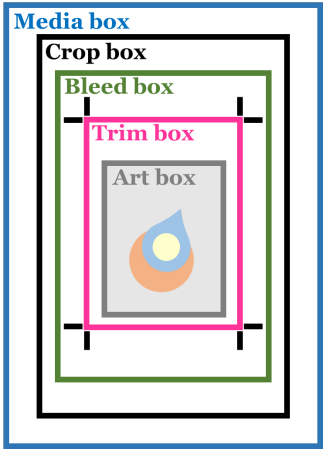
Feature overview

Fiery® Impose is a server-based imposition option that streamlines and automates the imposition process, making production more efficient. The gangup or multi-up imposition type is commonly used when printing business cards, postcards, tickets, and coupons.

The layout settings in Fiery Impose can be saved as an imposition template to automate future job imposition and submissions with Fiery Hot Folders, Virtual Printers, Server Presets and Fiery JobFlow.

Fiery Impose offers multiple workflows to optimize the layout composition of multi-up jobs depending on the properties of the source file, media size, automation requirements and other considerations.

Multi-up imposition layout workflows:



PDF boxes for finish size settings

	Definition and uses	Automation considerations
Finish size: Based on Crop Box	Impose automatically detects the crop box on the page. Users can specify the bleed values, Impose will move the trim marks inside the crop box to create a pseudo bleed. This workflow is recommended for personalized jobs since it is the only finish size that works with VDP jobs.	<ul style="list-style-type: none"> The templates have fixed layout with the number of rows and columns. Finish size is based on the input PDF. It works with automated workflows using Fiery Hot Folders, Virtual Printers, Server Presets and Fiery JobFlow. Does not require an Impose license on the server to consume templates using this finish size.
Finish size: User Defined	This finish size setting honors the designer's intent by initially detecting the finish size from trim box and bleed defined in the first page of a PDF document. Users can then manually specify the finish size and bleed values as desired. This workflow is recommended for general use and when operator needs to produce a fixed finish size and layout regardless of the size of the PDF boxes in the job, for example jobs with mixed page sizes. Operator can use scaling options to ensure the product fit into the desired finish size.	<ul style="list-style-type: none"> The finish size of the input PDF jobs doesn't have to match the finish size of the template. When scaling option is used, input job will be fitted into the template's finish size. The templates have a fixed finish size and media size. It works with automated workflows using Fiery Hot Folders, Virtual Printers, Server Presets and Fiery JobFlow.* Fiery JobFlow Base can calculate the copy quantity automatically.
Finish size: Based on Trim Box	Impose automatically detects the trim and bleed boxes defined in the first page of a PDF document and these values cannot be modified. Impose automatically calculates the optimum layout bases on these values, selected media size and other layout settings. Using Based on Trim box finish size can help you reduce the number of gangup templates and related automated workflows because the same Impose template can dynamically produce optimum layout with any document size for a given media size.	<ul style="list-style-type: none"> The templates have fixed media size. It is useful for automating multi-up jobs using the same media size. It works with automated workflows using Fiery Hot Folders, Virtual Printers, Server Presets and Fiery JobFlow.* Fiery JobFlow Base can calculate the copy quantity automatically.
Best fit for gangup repeat	This wizard workflow is only available for gangup repeat layout and Based on Crop Box as well as User Defined finish size. The Best Fit wizard automatically calculates and sets the copy quantity based on the number of finished products specified by the user.	<ul style="list-style-type: none"> It can be used to create layout for a Based-on Crop box or User Defined template. The copy quantity can't be saved to the template.

How-to: Print multi-up jobs

Objectives

Create and save an imposition layout for a business card using the following workflows:

1. Crop box workflow

Refer to the [Variable Data Printing how to guides](#).

2. User defined workflow

3. Based on Trim Box workflow

Refer to the “[Gangup automation by media size with Fiery Impose](#)” how-to guide

4. Best Fit for Gangup Repeat workflow

Additional resources

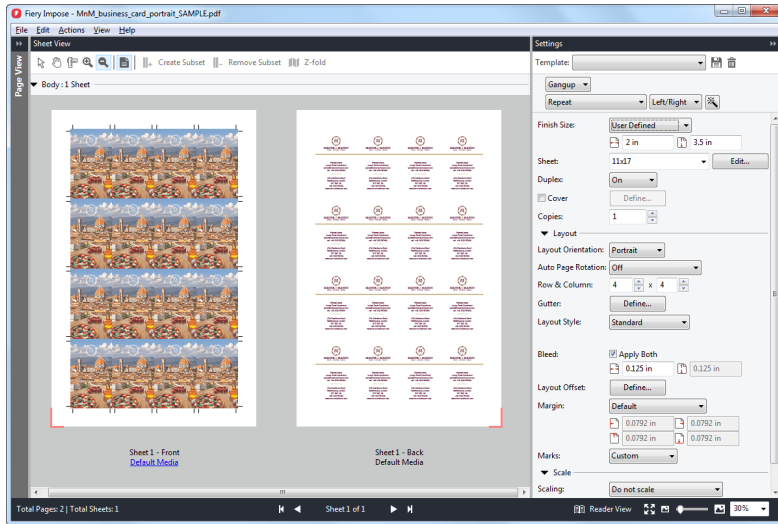
For additional software downloads, training resources and more, go to [Fiery Online Resources](#).

Before you begin

- Open Fiery Command WorkStation® 6 or later and connect to at least one Fiery server running Fiery FS350/FS350 Pro.
- Activate the Fiery Impose license on the computer running Command WorkStation or activate demo mode.
- To request the free 30-day trial for Fiery Impose, go to: <http://fiery.efi.com/impose/freetrial30>.
- Place the sample file, **MnM_business_card_portrait_SAMPLE.pdf**, in the Fiery server HELD queue. Drag the file to the Command WorkStation HELD list or use the Command WorkStation Import menu option.
- Ensure the printer and Fiery server have been calibrated before printing any output.

*Notes on setup and license requirements

- Templates work with Virtual Printers and Server Presets on FS200 Pro, FS300 Pro, and FS350 Pro Fiery servers.
- Fiery Hot Folders and Fiery JobFlow requires an Impose license on the machine that these workflows are on.
- Virtual Printers and Server Presets requires an Impose license activated and latest version of Fiery Command Workstation installed on the Fiery server



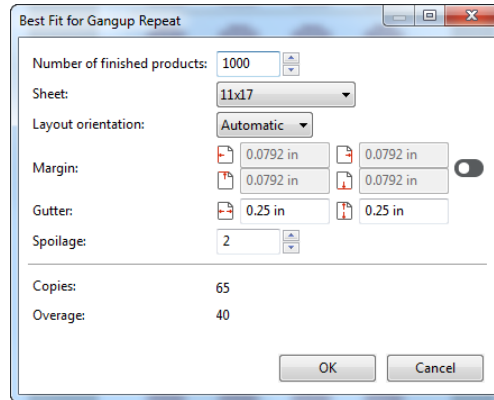
User Defined workflow

The user defined workflow looks for the trim box and the bleed values. The bleed values are automatically displayed and can be manually specified in Impose.

1. Select the **MnM_business_card_portrait_SAMPLE.pdf**, file in the Command WorkStation HELD list. Then right-click and select **Impose**.
 2. In the Settings pane, select **Gangup** for the product intent. Below Gangup, select **Repeat>Left/Right**
 3. For Finish Size, select **User Defined**.
 4. For Sheet, select **11x17** or **A3**.
 5. For Duplex, select **On**.
 6. In the Layout area, set the following options:
 - a. Layout & Orientation: select **Portrait**.
 - b. Row & Column: **4 x 4**.
 - c. Gutter: Click **Define**. Enter **0.25 inch** in any field and then click **Apply All**. The gutter will show a 0.25-inch white space between each card in the Sheet View pane. Click **OK** to close.
- Notice the Bleed value was automatically set when the job was opened in Impose with the User Defined option set as default from the Command WorkStation preferences.
- d. For Marks, open the drop-down menu to click **Define**.
 - i. In the Trim tab, select the **Print trim marks** check box.
 - ii. Select the **Print mark on front surface only** check box, then click **OK** to close.


7. Click the **Save** icon next to Template to save this new template for future use. For this example, type **BusinessCard_UserDefined**, and then click **OK**.
8. The Template menu will display **BusinessCard_UserDefined**.
9. Save and name the job.
10. Click File> Save.
11. In the **Save as** change the job name to **BusinessCards**. Select Held in the Where drop-down menu. Then click **OK** when done.
12. Click **File > Exit** or click the red **X** located in the corner to close Fiery Impose.
13. The new job will be saved in the HELD list, change the number of copies before sending to print.

Refer to the how-to guide: [Automate job submission with Fiery tools](#) to learn the steps to create a job preset, configure a virtual printer, or a Fiery Hot Folder to set job ticket specifications including imposition templates in order to automate most of your jobs. Take automation to the next level by using Fiery JobFlow Base workflows.



Best Fit for Gangup Repeat workflow

This workflow is useful for one multi-up repeat job. It only works with gangup repeat and it calculates the copy quantity for the user.

1. Select the **MnM_business_card_portrait_SAMPLE.pdf**, file in the Command WorkStation HELD list. Then right-click and select **Impose**.
2. In the Settings pane, select Gangup for the product intent. Below Gangup, select Repeat>Left/Right
3. For Finish Size, select User Defined.
4. For Sheet, select 11x17 or A3.
5. For Duplex, select On.
6. Click the Best Fit for Gangup Repeat button 
7. Assign the following Best Fit for Gangup Repeat settings.
8. Set Number of finished products to 1000.
9. Set Sheet to 11x17 or A3.
10. Set Layout orientation to Automatic.
11. Set Spoilage to 2.
12. Click OK.
13. The quantity of copies has been automatically calculated. This should be 65.
14. Click File> Save.
15. In the Save as change the job name to BusinessCards. Select Held in the Where drop-down menu. Then click OK when done.
16. Click File > Exit or click the red X located in the corner to close Fiery Impose.
17. The new job will be saved in the HELD list and is ready for printing.



EFI fuels success.

We develop breakthrough technologies for the manufacturing of signage, packaging, textiles, ceramic tiles, and personalized documents, with a wide range of printers, inks, digital front ends, and a comprehensive business and production workflow suite that transforms and streamlines the entire production process, increasing your competitiveness and boosting productivity. Visit www.efi.com or call 650-357-3500 for more information.



Nothing herein should be construed as a warranty in addition to the express warranty statement provided with EFI products and services.

The APPS logo, AutoCal, Auto-Count, Balance, BESTColor, BioVu, BioWare, ColorPASS, Colorproof, ColorWise, Command WorkStation, CopyNet, Cretachrom, Cretaprint, the Cretaprint logo, Cretaprinter, Cretaroller, Digital StoreFront, DirectSmile, DocBuilder, DocBuilder Pro, DockNet, DocStream, DSFdesign Studio, Dynamic Wedge, EDOX, EFI, the EFI logo, Electronics For Imaging, Entrac, EPCount, EPPPhoto, EPRegister, EPStatus, Estimate, ExpressPay, FabriVU, Fast-4, Fiery, the Fiery logo, Fiery Driven, the Fiery Driven logo, Fiery JobFlow, Fiery JobMaster, Fiery Link, Fiery Navigator, Fiery Prints, the Fiery Prints logo, Fiery Spark, FreeForm, Hagen, InkIntensity, Inkware, LapNet, Logic, Metrix, MicroPress, MiniNet, Monarch, OneFlow, Pace, Pecas, Pecas Vision, PhotoXposure, PressVu, Printcafe, PrinterSite, PrintFlow, PrintMe, the PrintMe logo, PrintSmith, PrintSmith Site, PrintStream, Print to Win, Prograph, PSI, PSI Flexo, Radius, Remoteproof, RIPChips, RIP-While-Print, Screenproof, SendMe, Sincolor, Splash, Spot-On, TrackNet, UltraPress, UltraTex, UltraVu, UV Series 50, VisualCal, VUTEk, the VUTEk logo, and WebTools are trademarks of Electronics For Imaging, Inc. and/or its wholly owned subsidiaries in the U.S. and/or certain other countries.

All other terms and product names may be trademarks or registered trademarks of their respective owners, and are hereby acknowledged.