

How-to:

Use prepress tools at the Fiery server to troubleshoot file issues



How-to: Use prepress tools at the Fiery server

Feature overview

Fiery® Graphic Arts Package, Premium Edition is a professional toolkit that compliments the Fiery server with a series of features to softproof, preflight and troubleshoot customer files.

Specially created for digital color printing, Preflight is the fastest and most intuitive preflight tool on the market. It checks for the most common errors to ensure that files will print successfully on a Fiery Driven™ print engine.

Preflight offers a fast process that does not affect the performance of the Fiery server because it is a function performed separately from job processing. The user sees the Preflight report displayed in the screen in just a few seconds. The report shows at a glance whether there are errors in the job and the status of every checked area with color-coding and icons.

Postflight is the process of analyzing processed files — Adobe® PostScript®, PDF, DCS2, and others — for quality control in a digital prepress workflow. The Postflight report is a tool that lets operators troubleshoot problems with the color of a printed job. They also may choose to use it as a preventative measure.

Fiery ImageViewer delivers precise control over color curve creation and application. Curves can be applied in Job Properties, allowing custom or factory default curve corrections to be applied without needing to open ImageViewer.

Objectives

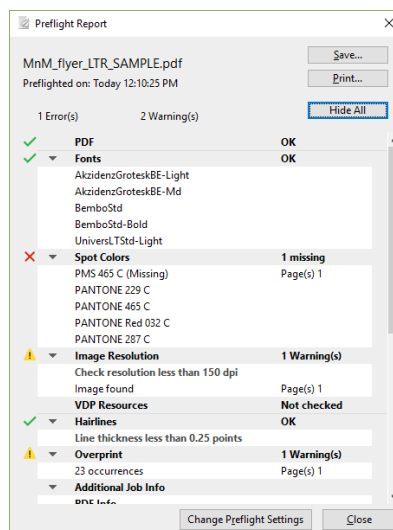
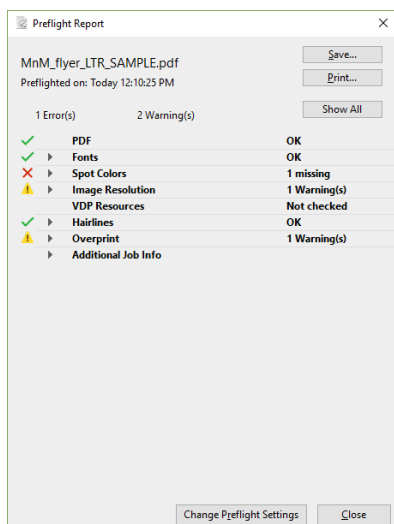
- Preflight the job
- Postflight the job
- Apply ImageViewer curves in Job Properties

Additional resources

For additional software downloads, training resources and more, go to [Fiery Online Resources](#).

Before you begin

- Open Fiery Command WorkStation® 6 or later and connected to at least one Fiery server running Fiery FS350/FS350 Pro.
- Activate the Fiery Productivity Package for the Fiery FS350.
- Activate the Graphic Arts Package, Premium Edition for the Fiery FS350 Pro.
- Place the file, **MnM_flyer_LTR_SAMPLE.pdf** or **MnM_flyer_A4_SAMPLE.pdf**, in the Fiery server Hold queue. Drag the file to the Command WorkStation Held list or use the Command WorkStation Import menu option.
- Ensure the printer and Fiery server have been calibrated before printing any output.



Preflight the job

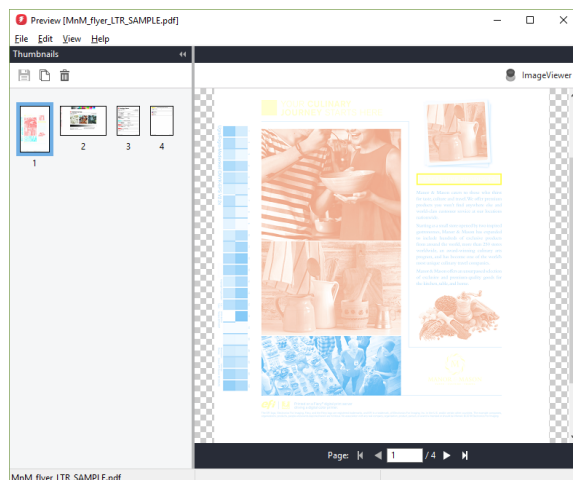
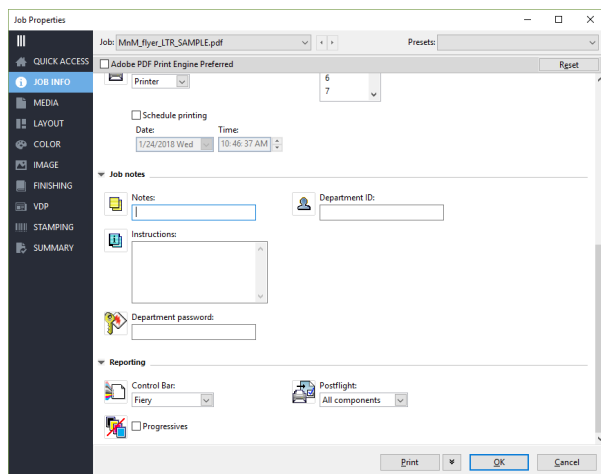
1. Select the **MnM_flyer_LTR_SAMPLE.pdf** or **MnM_flyer_A4_SAMPLE.pdf** file in the Command WorkStation Held list. Then right-click and select **Preflight**.
2. Select the settings for each of the preflight items checked by Preflight and the reporting level (Critical or Warning). For this example, use the following default settings.
 - a. Stop Preflight on first critical error: **Off**
 - b. Fonts: Missing Fonts — **On Critical**. Check courier is present — **On Warning**
 - c. Spot Colors: Missing Spot Colors — **On Critical**
 - d. Image Resolution: Check resolution less than 150 dpi (150dpi is default) — **On Warning**
 - e. VDP Resources: Missing resources — **Off**. Preflight only the first 10 records — **Off**
 - f. Hairlines: Line thickness less than 0.25 points (0.25 is the default) — **On Warning**
 - g. Overprint: Detect Overprint — **On Warning**

*If you have specific Preflight settings you want to apply to jobs in the future, save the settings by saving them as a **Preset**.*

3. Click **Preflight** to preflight the job.
4. The Preflight report will be generated and displayed. Click **Show All** to see a more detailed report.
5. For this example, one error was found for missing spot color PMS 465 C. One warning message that the image resolution is less than 150 dpi and the other warning message that this job contains overprints were detected in the job. These items should be corrected before printing the job.

The missing spot color can be resolved by adding it to the Fiery Spot Color library. See the [FS350_How-To_Capture_spot_colors](#) and reproduce them accurately.

6. Click **Save** will allow you to save the Preflight settings as a PDF file to share.
7. Click **Close** when done reviewing the Preflight report.



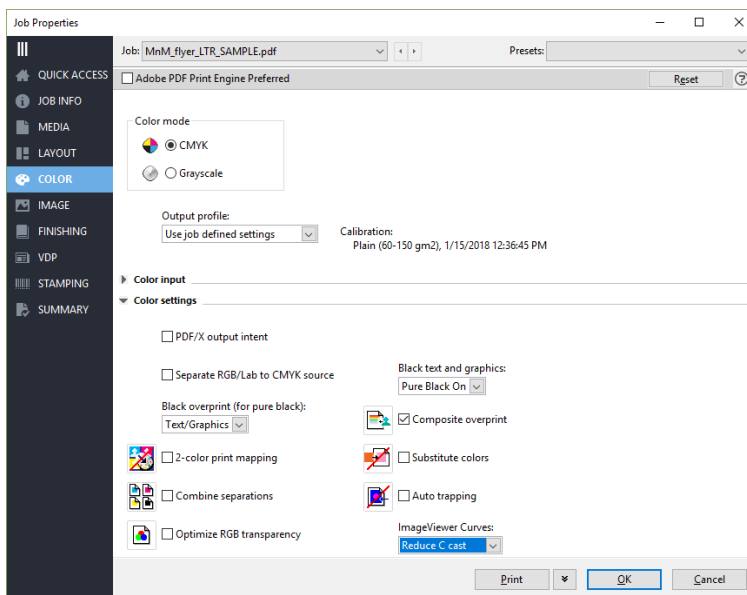
Postflight the job

1. Select the **MnM_flyer_LTR_SAMPLE.pdf** or **MnM_flyer_A4_SAMPLE.pdf** file in the Command WorkStation Held list. Then right-click to select **Properties**.
2. Click the **Job Info** icon.
3. Under Reporting, select a **Control Bar** to apply from the drop-down menu.
4. For **Postflight** select the reporting level for the job.
5. For this example select **All Components** to generate a complete report, including the Concise report, Test page, and Color-coded pages.
6. Click the **Media** icon.
7. In Output paper size, select **11x17** or **A3**.
8. Click **Print** to apply the Job Properties and print the job.
9. The job will be printed with the complete Postflight report. The Postflight report will color code each element on the page to reflect the type of color data used.

The Postflight Report color codes are as follows:

- Red objects represent RGB objects (Device RGB)
- Cyan objects represent CMYK objects (Device CMYK)
- Yellow objects represent Named Color objects (Spot colors)
- Black objects represent Gray object (Device gray)

10. In the color-coded page report, review the yellow objects to identify the placement for the missing spot color.
11. The complete report will also include the Postflight report, detailing the color settings used to print the job and tools that can be used to adjust the color output.



Apply an ImageViewer curve in Job Properties

1. Select the **MnM_flyer_LTR_SAMPLE.pdf** or **MnM_flyer_A4_SAMPLE.pdf** file in the Command WorkStation Held list. Then right-click to select **Properties**.
2. Click the **Color** icon.
3. Under **Color settings > ImageViewer Curves**, select one of the available presets.
4. For this example, choose one of the default curve adjustments.
5. Click **Print** to submit the job and view the output. Or select **Process and Hold** to view the rasterized file in Preview.

The default curve adjustments do not require Fiery Graphic Arts Package, Premium Edition or Fiery Productivity Package.

The default curves include: Lighter highlights, Midtone boost, Shadow detail, Reduce C cast, Reduce M cast, and Reduce Y cast.

Custom curves are created and saved in Fiery ImageViewer, which requires Fiery Graphic Arts Package, Premium Edition or Fiery Productivity Package. The custom curves can be applied in ImageViewer or in Job Properties.



EFI fuels success.

We develop breakthrough technologies for the manufacturing of signage, packaging, textiles, ceramic tiles, and personalized documents, with a wide range of printers, inks, digital front ends, and a comprehensive business and production workflow suite that transforms and streamlines the entire production process, increasing your competitiveness and boosting productivity. Visit www.efi.com or call 650-357-3500 for more information.



Nothing herein should be construed as a warranty in addition to the express warranty statement provided with EFI products and services.

The APPS logo, AutoCal, Auto-Count, Balance, BESTColor, BioVu, BioWare, ColorPASS, Colorproof, ColorWise, Command WorkStation, CopyNet, Cretachrom, Cretaprint, the Cretaprint logo, Cretaprinter, Cretaroller, Digital StoreFront, DirectSmile, DocBuilder, DocBuilder Pro, DockNet, DocStream, DSFdesign Studio, Dynamic Wedge, EDOX, EFI, the EFI logo, Electronics For Imaging, Entrac, EPCount, EPPhoto, EPRegister, EPStatus, Estimate, ExpressPay, FabriVU, Fast-4, Fiery, the Fiery logo, Fiery Driven, the Fiery Driven logo, Fiery JobFlow, Fiery JobMaster, Fiery Link, Fiery Navigator, Fiery Prints, the Fiery Prints logo, Fiery Spark, FreeForm, Hagen, Inkensity, Inkware, LapNet, Logic, Metrix, MicroPress, MiniNet, Monarch, OneFlow, Pace, Pecos, Pecos Vision, PhotoXposure, PressVu, Printcafe, PrinterSite, PrintFlow, PrintMe, the PrintMe logo, PrintSmith, PrintSmith Site, PrintStream, Print to Win, Prograph, PSI, PSI Flexo, Radius, Remoteproof, RIPChips, RIP-While-Print, Screenproof, SendMe, Sincolor, Splash, Spot-On, TrackNet, UltraPress, UltraTex, UltraVu, UV Series 50, VisualCal, VUTEK, the VUTEK logo, and WebTools are trademarks of Electronics For Imaging, Inc. and/or its wholly owned subsidiaries in the U.S. and/or certain other countries.

All other terms and product names may be trademarks or registered trademarks of their respective owners, and are hereby acknowledged.

© 2018 ELECTRONICS FOR IMAGING, INC. ALL RIGHTS RESERVED. | WWW.EFI.COM