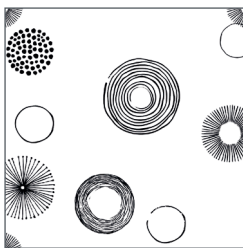


# Textured print on wallcovering

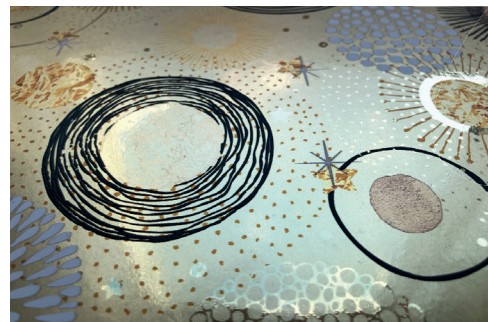
The multi-layer and white ink technology from EFI™ enables users to create tactile textures with any design or pattern on wallcovering. In this example, printed on DreamScape's Gold Flash, the image is a two-layer print with white ink.

## Black texture elements

The black shapes print on the bottom layer, creating the base for the texture. CMYK and spot white print on the top layer, adding a second layer of black ink to the shapes. The result is a raised appearance. The light, neutral grey tone in the artwork creates a matte finish on the glossy gold surface.

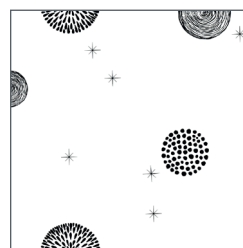


To increase the height of the texture in either example, print two or more layers of the black texture file.



## White texture elements

Texture can be added under the white shapes instead by creating a file with the white elements only and colouring them black. This file prints on the bottom layer. CMYK and white will print on the top layer, completing the print.



[https://youtu.be/899HfB\\_Wnsg](https://youtu.be/899HfB_Wnsg)