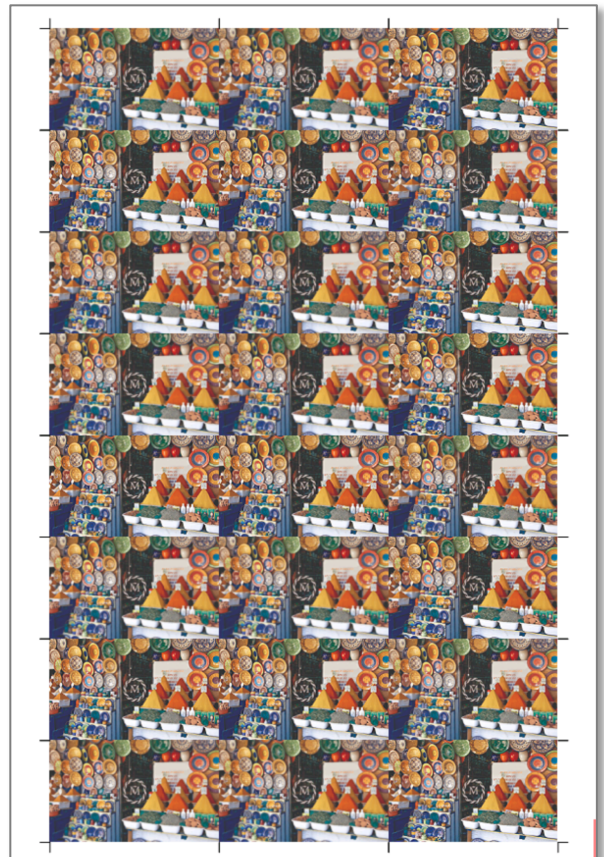


How-to: Automate offline finishing with Horizon SmartSlitter SMSL-100 finishers

Use pre-made templates to automate most common jobs



Feature overview

Fiery® Impose is the most intuitive PDF-based sheet imposition software on the market. Tight integration with Fiery Command WorkStation®, makeready software, and prepress tools helps automate print job submission.

Fiery Impose templates allow users to save the most common job layouts to automate the imposition process. Templates can also include barcodes and registration marks. These are recognized by the barcode scanner in Horizon SmartSlitter SMSL-100 finishing equipment.

The barcodes and registration marks on the printed sheets instruct the Horizon SmartSlitter SMSL-100 how to position blades, cutters, and creasers to finish the print job.

Integrating Fiery Impose with Horizon SmartSlitter SMSL-100 brings dramatic productivity gains to job preparation and finishing by automating the process. This saves time, plus minimizes waste and errors.

Use pre-made templates to automate most common jobs

Objectives

- Identify where imposition templates are stored on the Fiery Command WorkStation computer client
- Load the Impose-Horizon templates in the Fiery imposition template folder
- Add Horizon SmartSlitter SMSL-100 device profile to Fiery Impose for ease of adding barcode and registrations compatible with this model of finisher
- Create and save an Impose-Horizon template for a business card as an example

Additional resources

For additional software downloads, training resources, and more, go to: [Fiery Online Resources](#).

For additional templates and job applications visit the Horizon web site at:

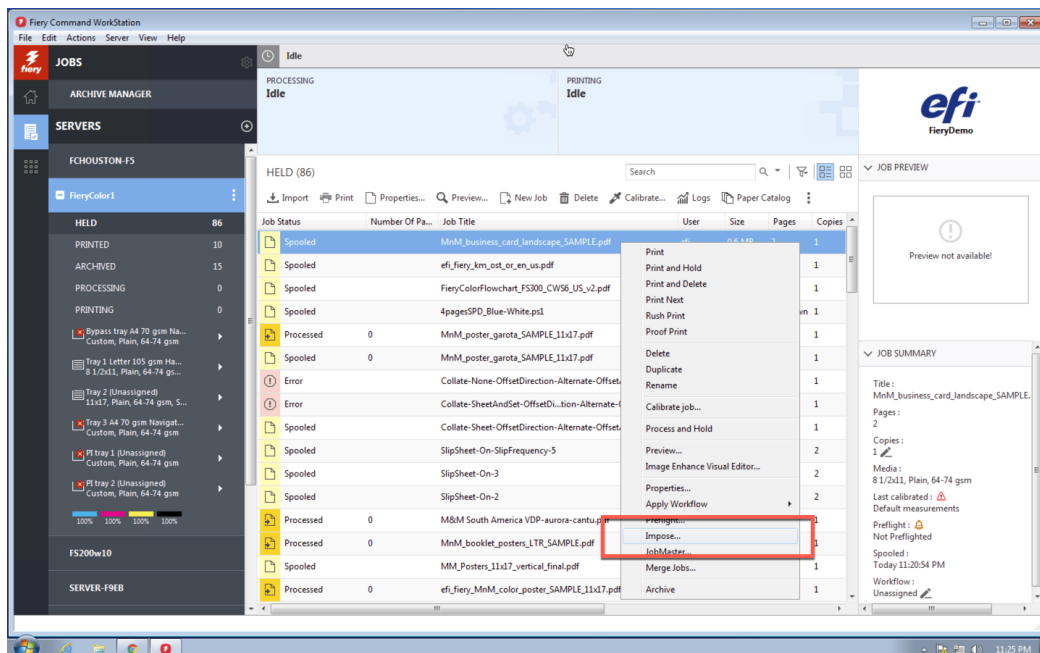
http://products.horizon.co.jp/en/products/digital_finishing/smartsitter/smartsitter_e.html

Before you begin

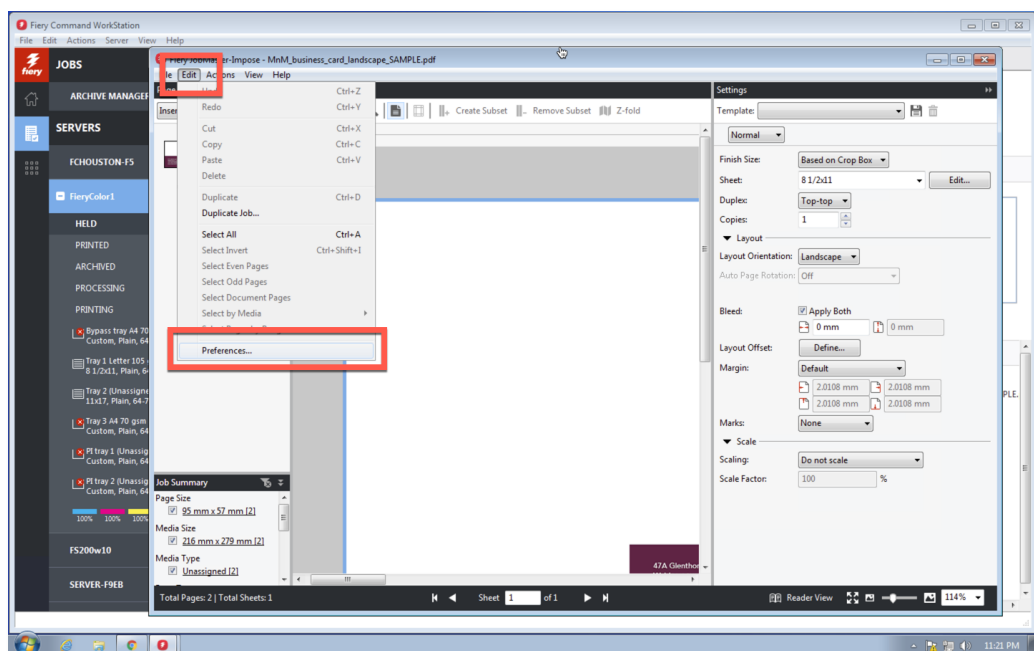
- Open Fiery Command WorkStation 6.4, and connect to at least one Fiery server.
- Activate the Fiery Impose license on the computer running Command WorkStation. Fiery Impose can either be fully licensed or running in trial mode. To request the free 30-day trial for Fiery Impose, go to: fiery.efi.com/impose/freetrial30.
- Depending on the paper size standard you use, open the zip file **Fiery_Impose_Horizon_Templates_US** and **Fiery_Impose_Horizon_Templates_Metric**. Copy the file to a location you can access from the client running Command WorkStation.
- Place the sample file, **MnM_business_card_landscape_SAMPL E.pdf**, in the Fiery server **Held** queue by dragging the file. Or use the Command WorkStation Import menu option.
- Make sure the printer and Fiery server have been calibrated before printing any output.

Identify the Fiery imposition template

1. Select any spooled job in the **Held** queue. Right-click to select **Fiery Impose**.

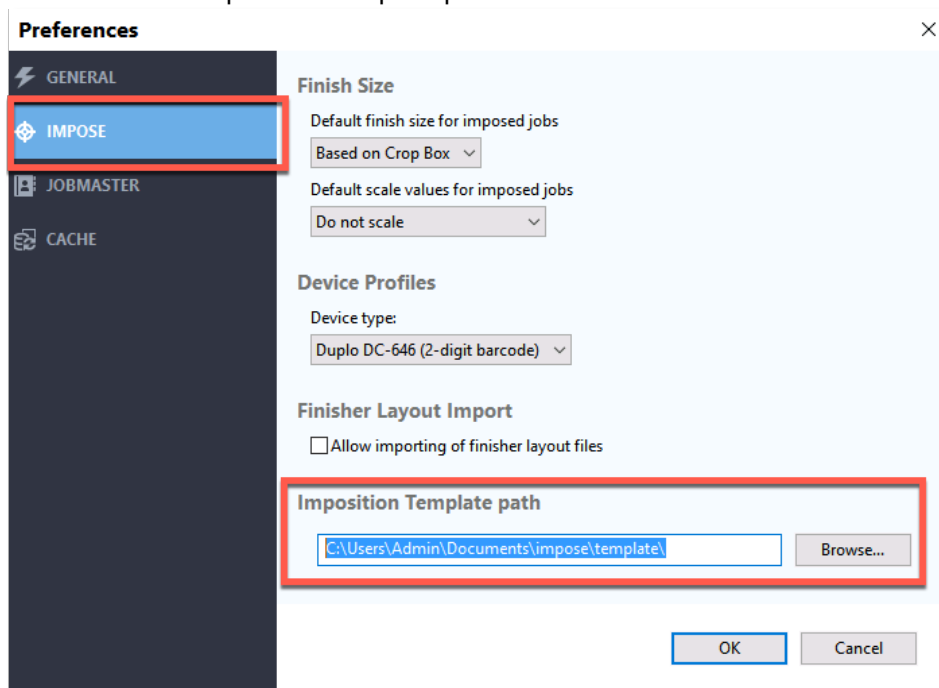


2. In Fiery Impose, go to **Edit** and select **Preferences**.



How to: Use pre-made templates to automate most common jobs

3. Click **IMPOSE** to view the preferences for Fiery Impose.
4. Note the default Imposition Template path location.



The imposition template path location contains the templates you can access in Fiery Impose.

Add the Horizon barcode templates to Fiery Impose

1. Open the Fiery server, Windows or macOS client and browse to the location where you stored the **Fiery_Impose_Horizon_Templates_US** or **Fiery_Impose_Horizon_Templates_Metric** folder.
2. Open the folder.
3. Copy the .dbt files you want, and paste into the imposition template path location identified in the previous step. C:\Users\Admin\Documents\impose\templates
4. These additional templates are now available to use in Fiery Impose.
5. To add your templates to your Horizon SmartSlitter SMSL-100 finisher later in this How-to guide, copy the template files to a USB thumb drive to be used later.

Add the Horizon SmartSlitter device profiles to the Fiery server

On the Fiery server or Windows workstation

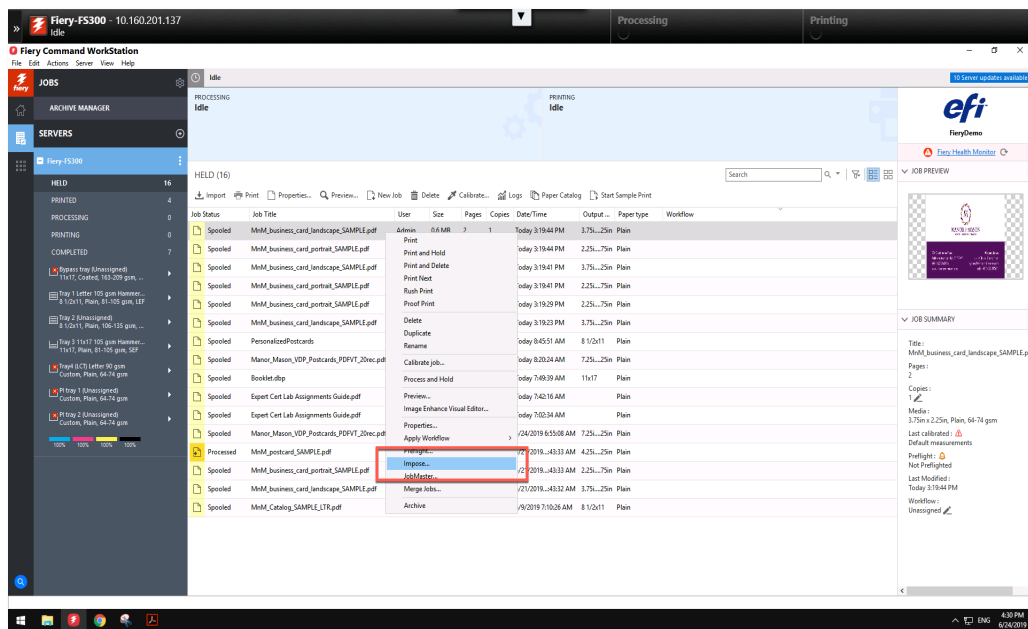
- On the Fiery, go to the windows start menu.
- Windows Explorer and navigate to **C:\Program Files\Fiery\Components\EFI\Impose3\DevProfiles**
- Save Horizon device profiles in the DevProfiles folder.

On the Macintosh workstation

- On the Macintosh
- Open the Finder window
- Navigate to your System Hard Drive
- Navigate to the **/Library/Application Support/EFI/Impose/DevProfiles/**
- Save the Horizon SmartSlitter device profiles in the DevProfiles folder

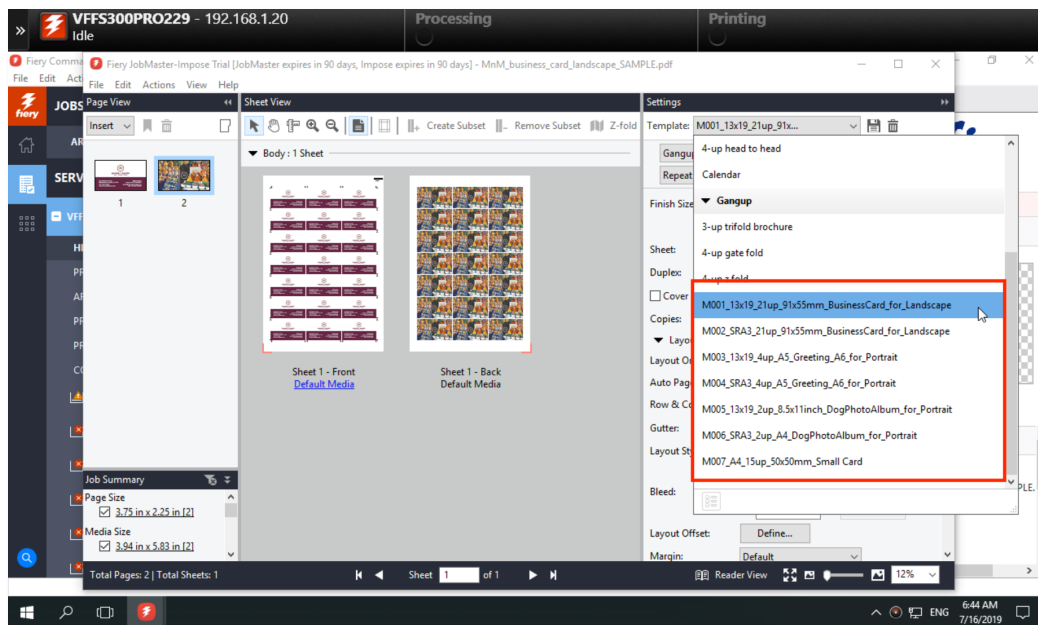
Apply an imposition template for a business card

1. Select the **MnM_business_card_landscape_SAMPLE.pdf** file in the Command WorkStation Held queue. Then right-click and select **Impose**.



How to: Use pre-made templates to automate most common jobs

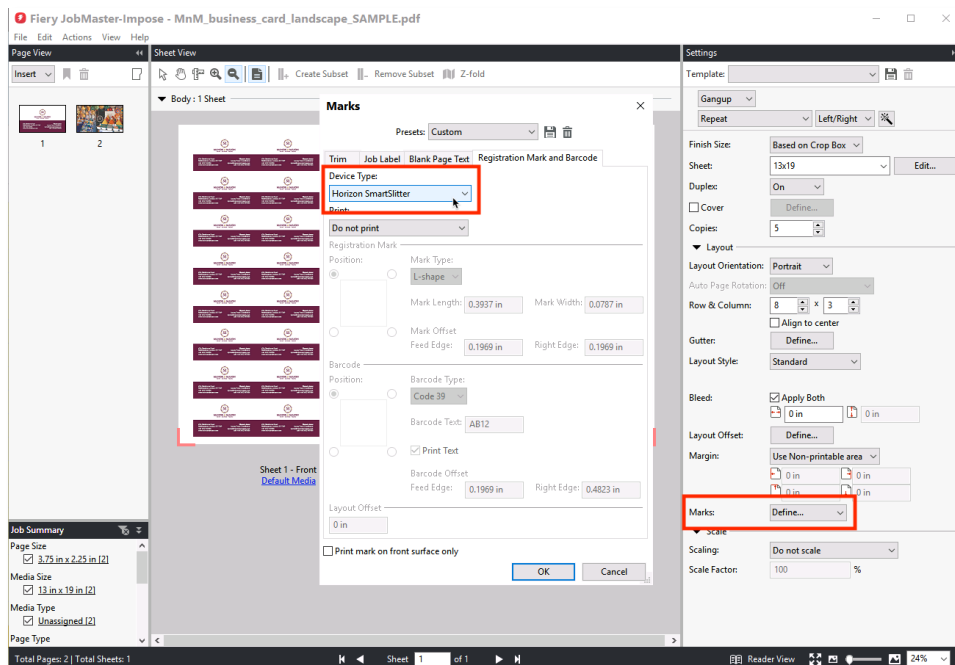
2. In the Settings pane, select **Template** to view the available templates.
3. Select the desired template. For this example, select **M001_13x19_21up_91x55mm_BusinessCard_for_Landscape.dbt**.



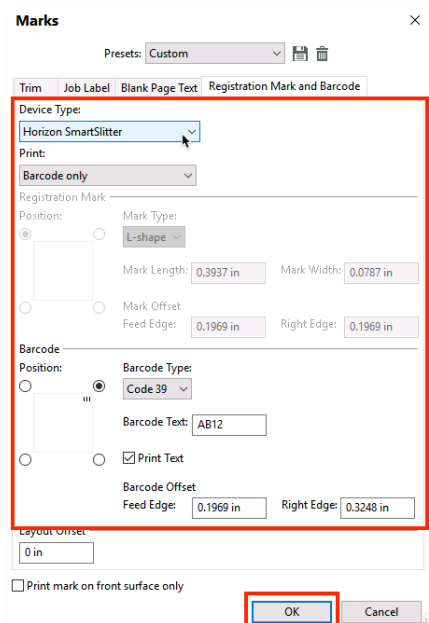
As the name of the template indicates, the template layout is designed for business card jobs with a trim box of 3.5 inches wide and 2 inches high, with a .125 inch bleed.

How to: Use pre-made templates to automate most common jobs

- To view the default registration marks and barcode under Marks, click **Define**.



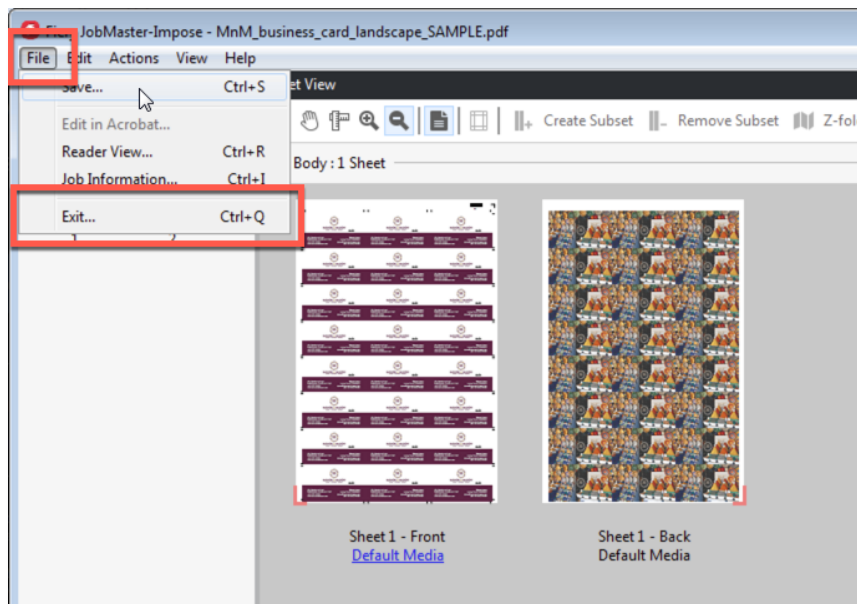
- Click the **Registration Marks and Barcode** tab. These settings in the Impose template are automatically defined. Select **OK**.



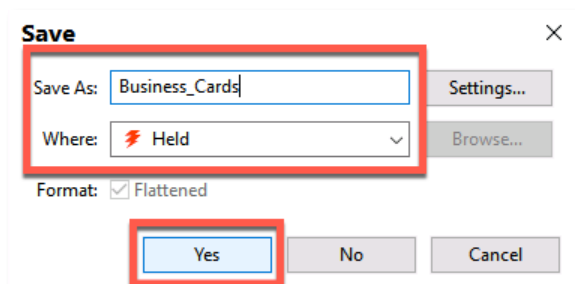
This impose template can be used for automated submission workflows using Fiery JobFlow Base or Fiery JobFlow. With Fiery FS400, you can also automate with Job Properties, Job Presets, Virtual Printers, and Hot Folders. You can find more information on Hot Folders in the [How-to: Automate job submission with Fiery tools](#).

How to: Use pre-made templates to automate most common jobs

- To save and name the job and exit Impose, click **File > Exit**.



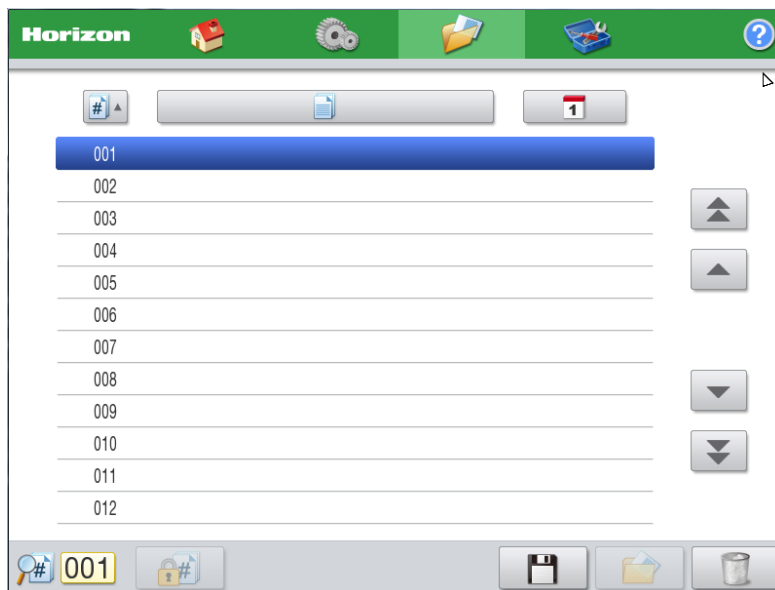
- Click **Save**, and change the job name to **BusinessCards**. Then click **Yes** when done.



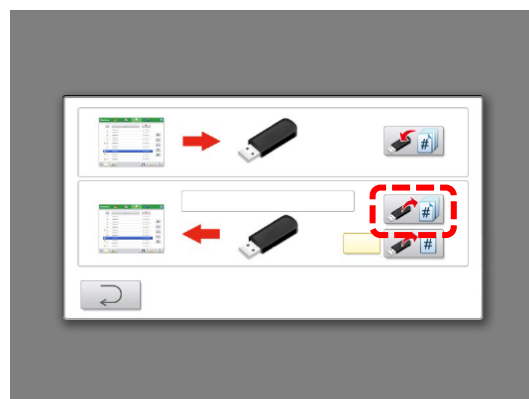
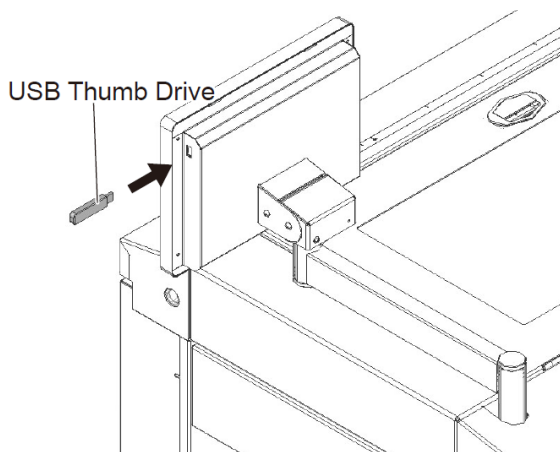
- The new job is saved in the Held queue. Right-click on the job and select **Print**.

Complete production on the Horizon SmartSlitter finisher

1. Copy folder "jobList_2020_1_20_11_58" onto a USB drive.
2. At the Horizon machine, go to the Job memory screen below.
3. At the machine, go to Job memory screen below.

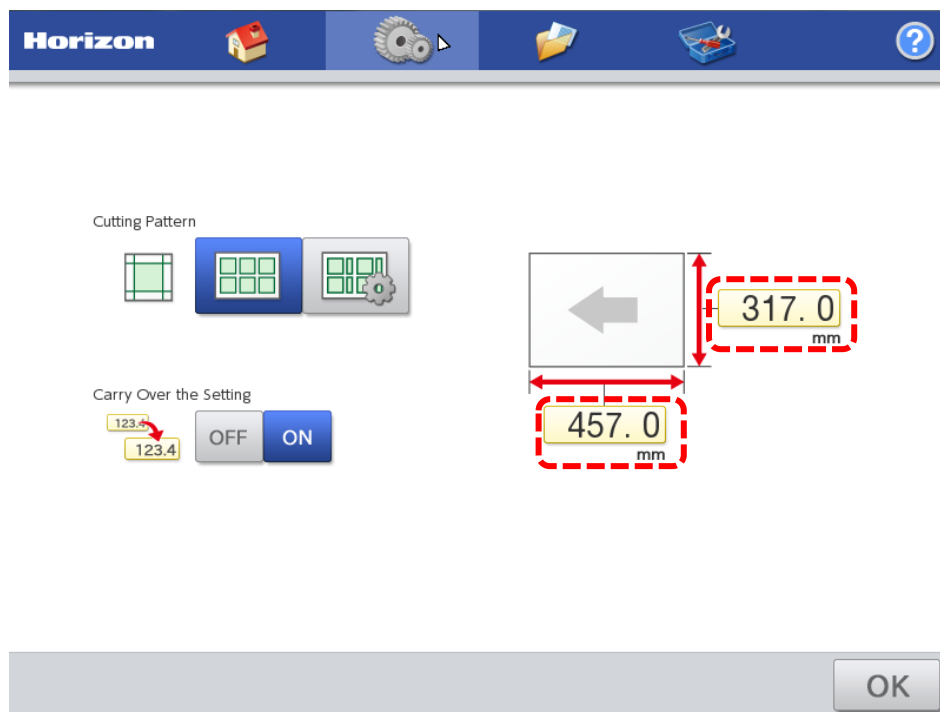


4. Plug USB thumb drive to import the template and press the icon below at the following screen, then remove the USB when it is done.

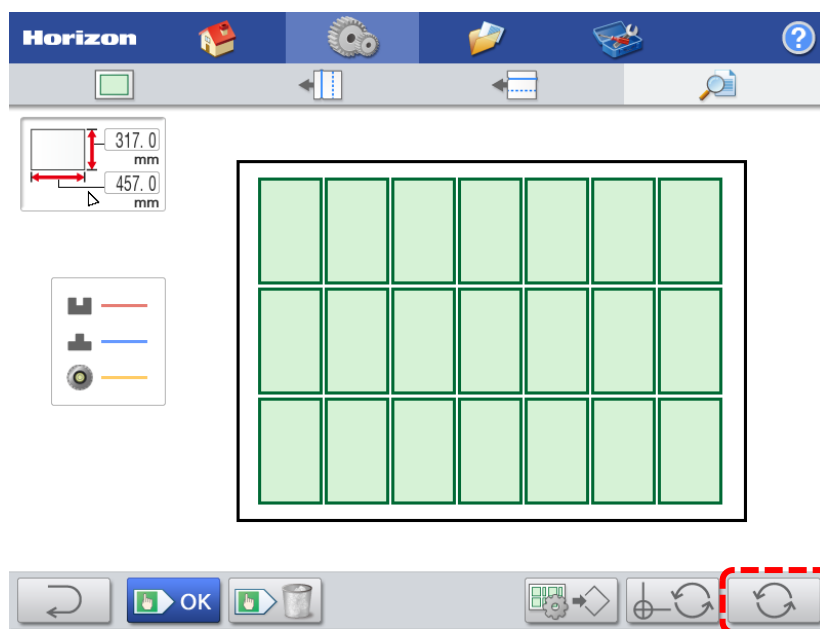


How to: Use pre-made templates to automate most common jobs

- Go back to the set-up screen and input the sheet size manually on the touchscreen to match the sheet size.

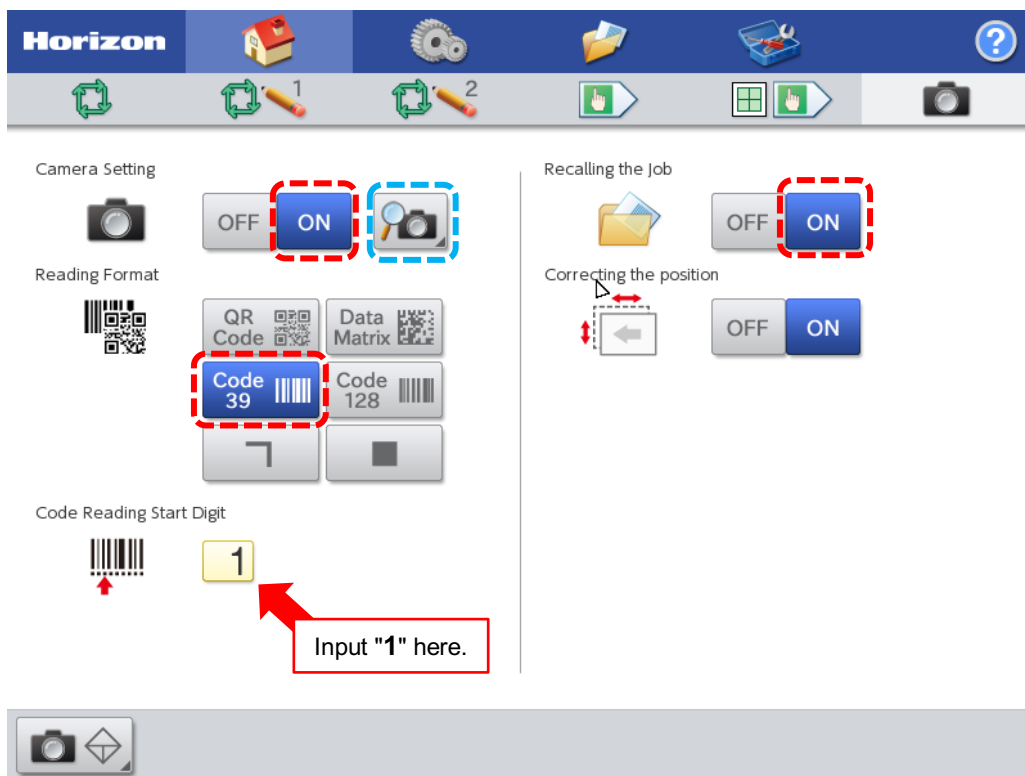


- Carry out the changeover by pressing the icon at the bottom right.

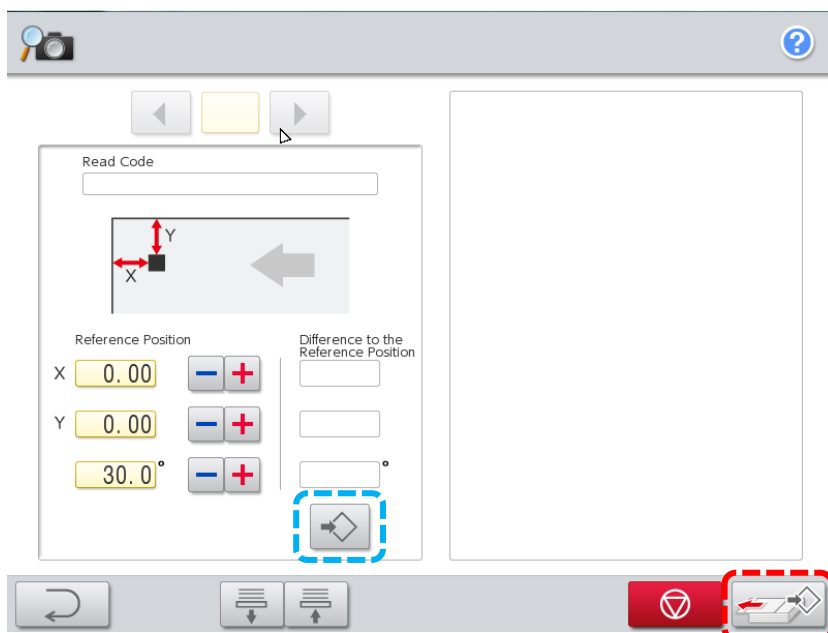


How to: Use pre-made templates to automate most common jobs

- Go to the Camera Setting screen and turn ON the camera option and select the barcode type "Code 39" and enter the code reading start digit as "1", then Press the camera icon (shown in blue square) to set the reference position in different screen.

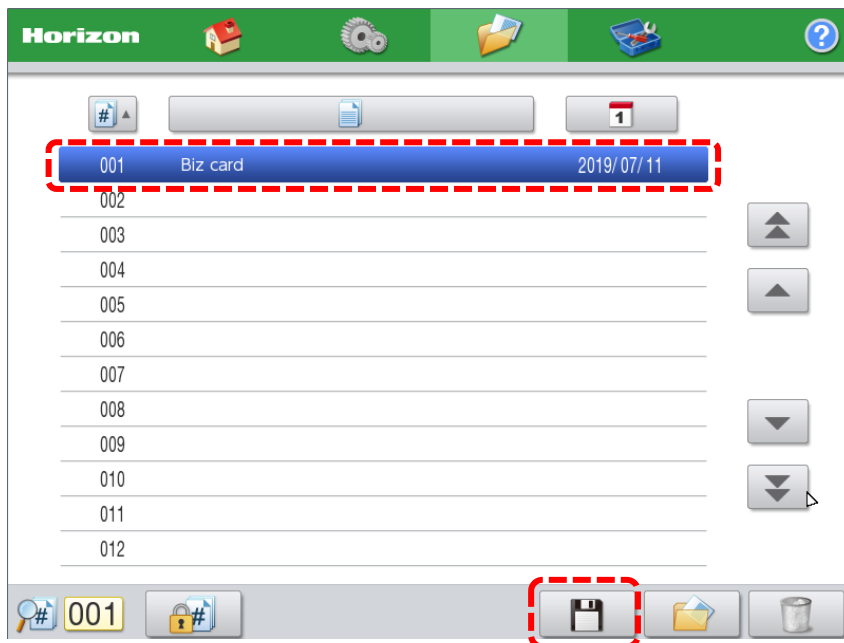


- Feed one sheet by pressing the icon at the right bottom and overwrite the "reference position" by pressing the icon below (shown in light blue).

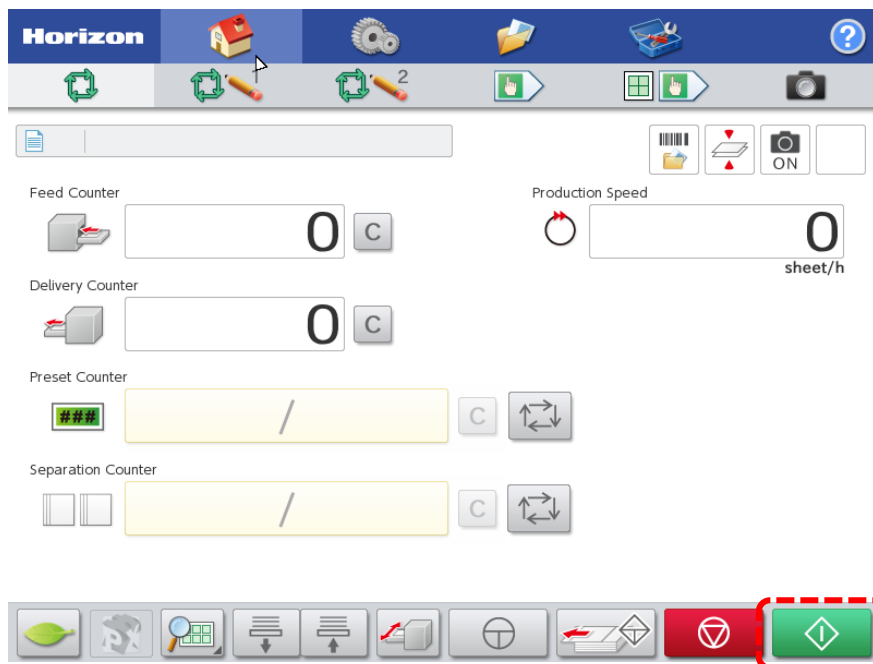


How to: Use pre-made templates to automate most common jobs

- Go to the Job memory screen below again and overwrite this information to the job memory number 001. (Template name is "M001" as mentioned in the barcode, but first letter "M" needs to be ignored in this process)



- Press to run the job. The barcode scanner will automatically detect the finishing template according to the printed barcode and begin processing the job.



EFI fuels success.

We develop breakthrough technologies for the manufacturing of signage, packaging, textiles, ceramic tiles, and personalized documents, with a wide range of printers, inks, digital front ends, and a comprehensive business and production workflow suite that transforms and streamlines the entire production process, increasing your competitiveness and boosting productivity. Visit www.efi.com or call 650-357-3500 for more information.



Nothing herein should be construed as a warranty in addition to the express warranty statement provided with EFI products and services.

The APPS logo, AutoCal, Auto-Count, Balance, BESTColor, BioVu, BioWare, ColorPASS, Colorproof, ColorWise, Command WorkStation, CopyNet, Cretachrom, Cretaprint, the Cretaprint logo, Cretaprinter, Cretaroller, Digital StoreFront, DirectSmile, DocBuilder, DocBuilder Pro, DockNet, DocStream, DSFdesign Studio, Dynamic Wedge, EDOX, EFI, the EFI logo, Electronics For Imaging, Entrac, EPCount, EPPhoto, EPRegister, EPStatus, Estimate, ExpressPay, FabriVU, Fast-4, Fiery, the Fiery logo, Fiery Driven, the Fiery Driven logo, Fiery JobFlow, Fiery JobMaster, Fiery Link, Fiery Navigator, Fiery Prints, the Fiery Prints logo, Fiery Spark, FreeForm, Hagen, Inkensity, Inkware, LapNet, Logic, Metrix, MicroPress, MiniNet, Monarch, OneFlow, Pace, Pecas, Pecas Vision, PhotoXposure, PressVu, Printcafe, PrinterSite, PrintFlow, PrintMe, the PrintMe logo, PrintSmith, PrintSmith Site, PrintStream, Print to Win, Prograph, PSI, PSI Flexo, Radius, Remoteproof, RIPChips, RIP-While-Print, Screenproof, SendMe, Sincolor, Splash, Spot-On, TrackNet, UltraPress, UltraTex, UltraVu, UV Series 50, VisualCal, VUTEK, the VUTEK logo, and WebTools are trademarks of Electronics For Imaging, Inc. and/or its wholly owned subsidiaries in the U.S. and/or certain other countries.

All other terms and product names may be trademarks or registered trademarks of their respective owners, and are hereby acknowledged.