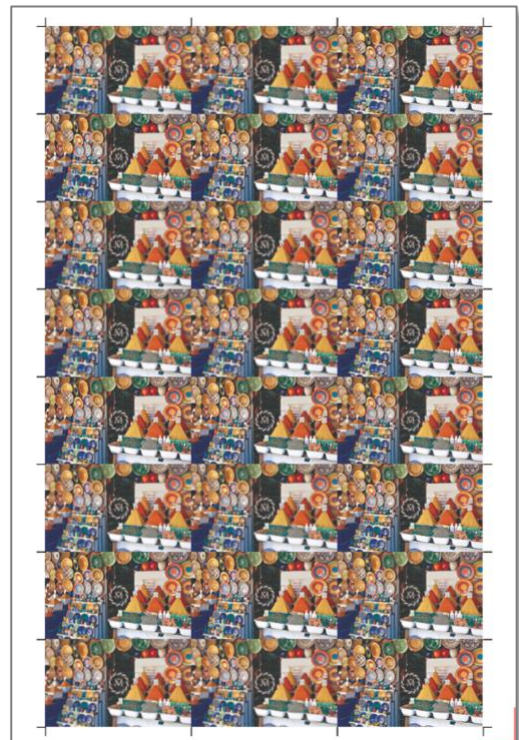
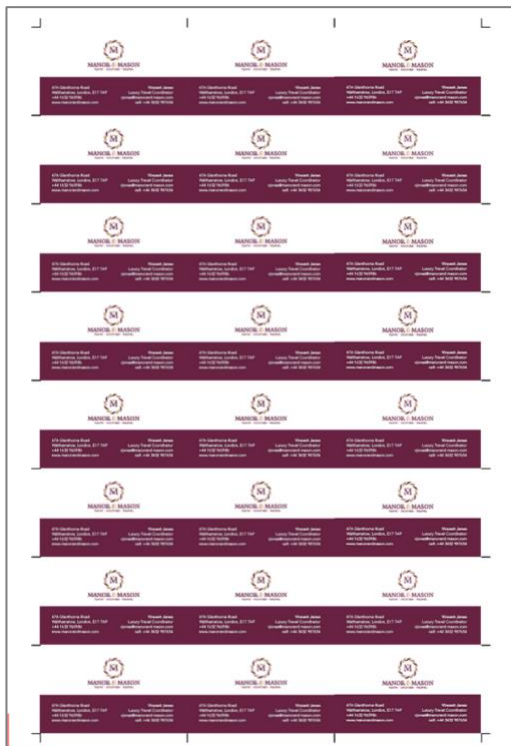


How-to: Automate offline finishing with MBM AeroCut Prime and Velocity finishers

Use pre-made templates to automate most common jobs



Feature overview

Fiery® Impose is the most intuitive PDF-based sheet imposition software on the market. Tight integration with Fiery Command WorkStation®, makeready software, and prepress tools helps automate print job submission.

Fiery Impose templates allow users to save the most common job layouts to automate the imposition process. Templates can also include barcodes and registration marks. These are recognized by the barcode scanner in MBM AeroCut Prime and Velocity finishing equipment.

The barcodes and registration marks on the printed sheets instruct the MBM AeroCut Prime and Velocity finishers on how to position blades, cutters, and creasers to finish the print job.

Integrating Fiery Impose with MBM finishers brings dramatic productivity gains to job preparation and finishing by automating the process. This saves time, plus minimizes waste and errors.

This feature is compatible with the AeroCut X Pro and AeroCut X models.

Use pre-made templates to automate most common jobs

Objectives

- Identify where imposition templates are stored on the Fiery Command WorkStation computer client
- Load the Impose-MBM AeroCut templates in the Fiery imposition template folder
- Add MBM AeroCut device profile to Fiery Impose for ease of adding barcode and registrations compatible with this model of finisher
- Create and save an Impose-MBM template for a business card as an example

Additional resources

For additional software downloads, training resources, and more, go to [Fiery Online Resources](#).

Before you begin

- Open Fiery Command WorkStation 6.4 and above and connect to at least one Fiery server.
- Activate the Fiery Impose license on the computer running Command WorkStation.

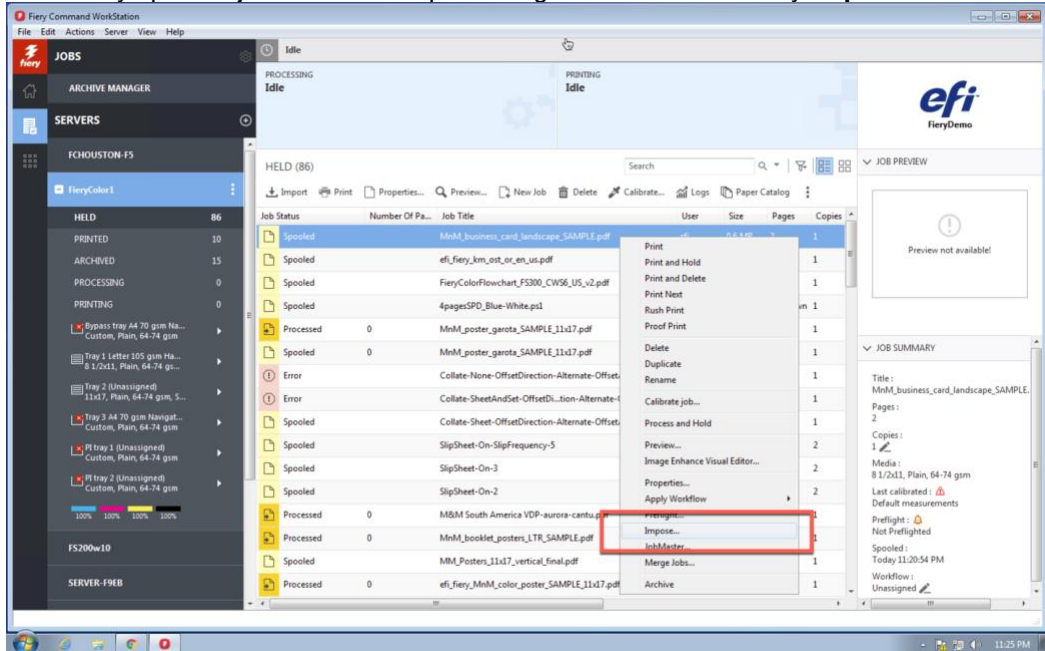
Fiery Impose can either be fully licensed or running in trial mode. To request the free 30-day trial for Fiery Impose, go to: fiery.efi.com/impose/freetrial30.

- Depending on the paper size standard you use, open the zip file **Fiery_Impose_MBM_Templates_US**. Copy the file to a location you can access from the client running Command WorkStation.
- Place the sample file, **MnM_business_card_landscape_SAMPLE.pdf**, in the Fiery server **Held** queue by dragging the file. Or use the Command WorkStation Import menu option.
- Make sure the printer and Fiery server have been calibrated before printing any output.

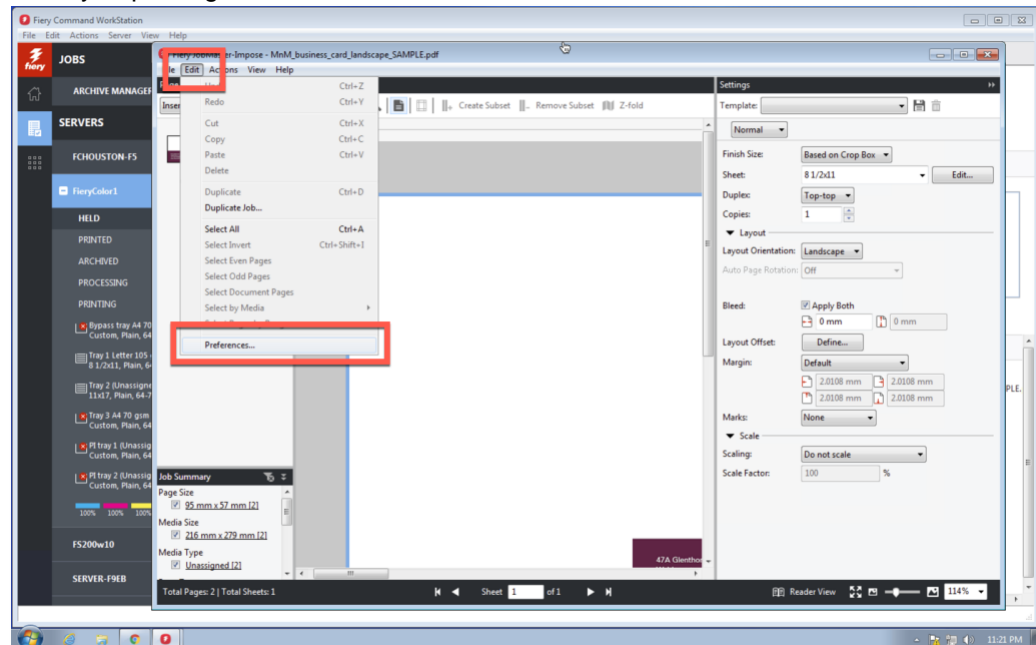
How-to: Automate offline finishing with MBM AeroCut Prime and Velocity finishers

Identify the Fiery imposition template

1. Select any spooled job in the **Held** queue. Right-click to select **Fiery Impose**.

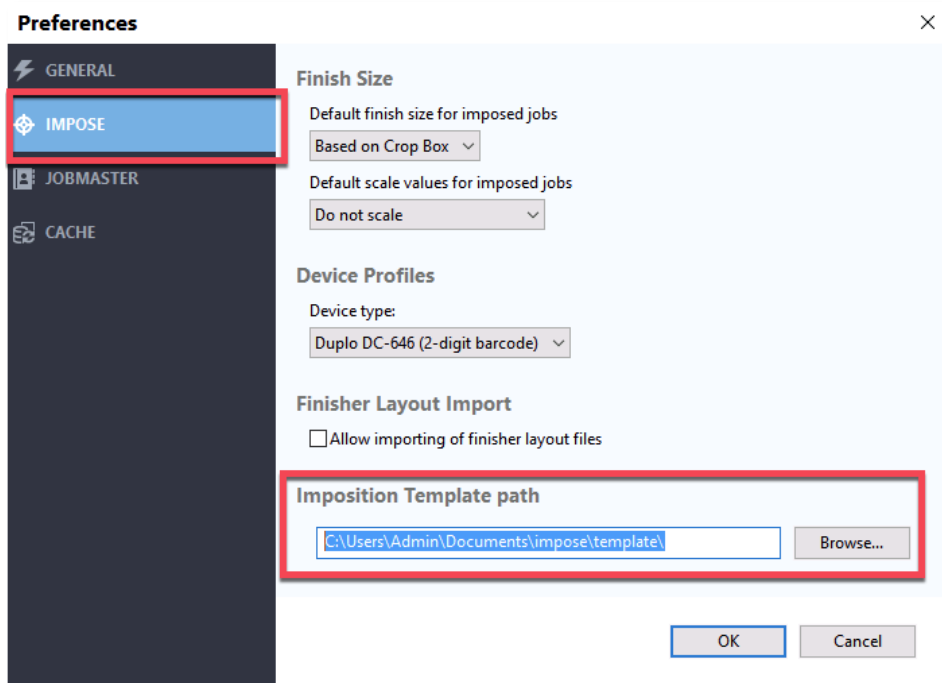


2. In Fiery Impose, go to **Edit** and select **Preferences**.



How-to: Automate offline finishing with MBM AeroCut Prime and Velocity finishers

3. Click **IMPOSE** to view the preferences for Fiery Impose.
4. Note the default Imposition Template path location.



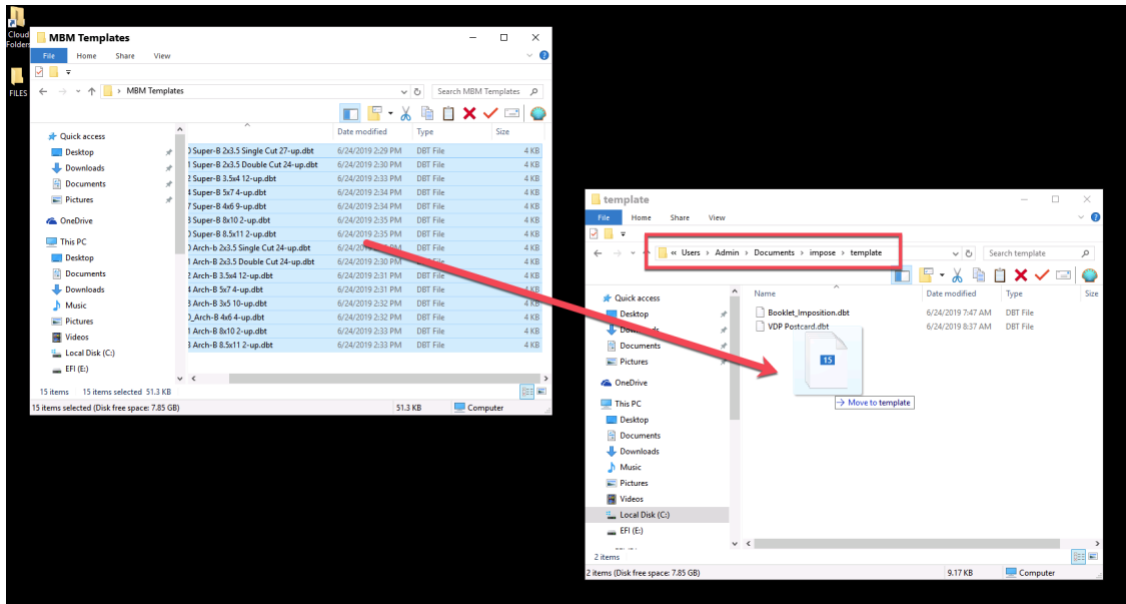
The imposition template path location contains the templates you can access in Fiery Impose.

How-to: Automate offline finishing with MBM AeroCut Prime and Velocity finishers



Add the MBM AeroCut barcode templates to Fiery Impose

1. Open the Fiery server, Windows or macOS client and browse to the location where you stored the **Fiery_Impose_MBM_Templates_US** folder.
2. Open the folder.
3. Copy the .dbt files you want and paste into the imposition template path location identified in the previous step. **C:\Users\Admin\Documents\impose\templates**
4. These additional templates are now available to use in Fiery Impose.



Add the MBM AeroCut device profiles to the Fiery server

On the Fiery server or Windows workstation

- On the Fiery, go to the windows start menu.
- Windows Explorer and navigate to **C:\Program Files\Fiery\Components\EFI\Impose3\DevProfiles**.
- Save MBM AeroCut device profiles in the DevProfiles folder.

On a Mac workstation

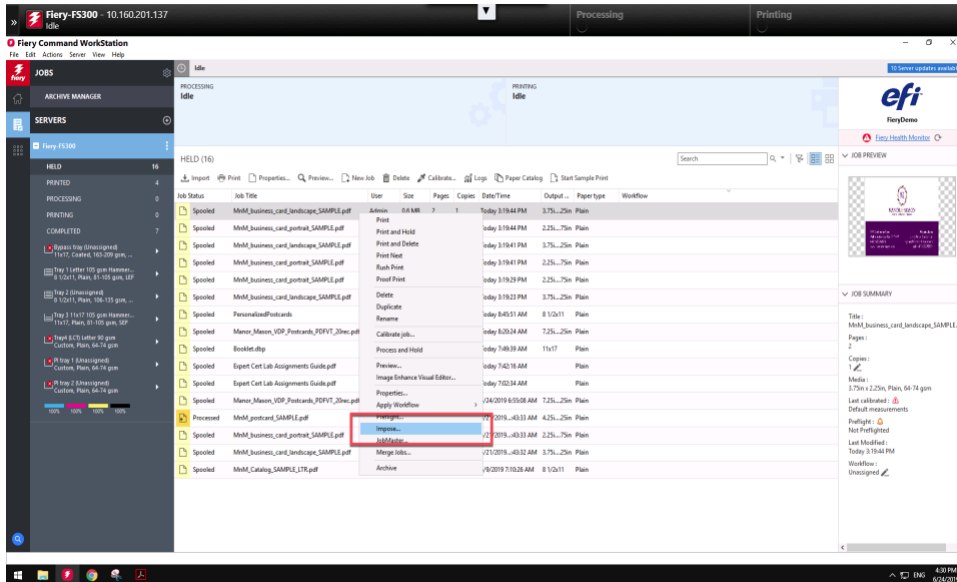
- On the Mac, open the Finder window.
- Navigate to your System Hard Drive and navigate to the **/Library/Application Support/EFI/Impose/DevProfiles/**.
- Save the MBM AeroCut device profiles in the DevProfiles folder.

How-to: Automate offline finishing with MBM AeroCut Prime and Velocity finishers

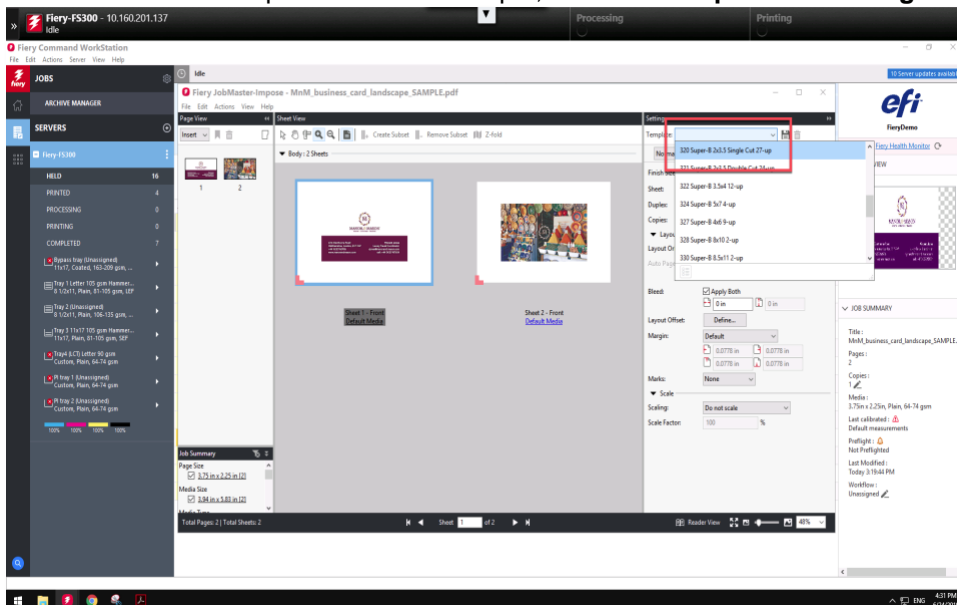


Apply an imposition template for a business card

1. Select the **MnM_business_card_landscape_SAMPLE.pdf** file in the Command WorkStation Held queue. Then right-click and select **Impose**.



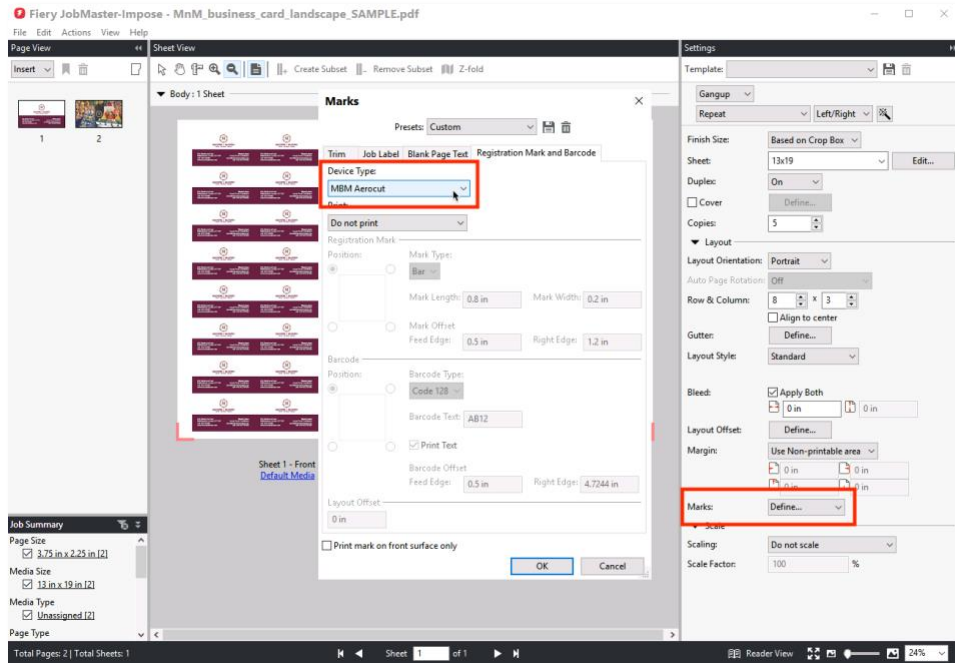
2. In the Settings pane, select **Template** to view the available templates.
3. Select the desired template. For this example, select **320 Super-B2x3.5 Single Cut 27-up**.



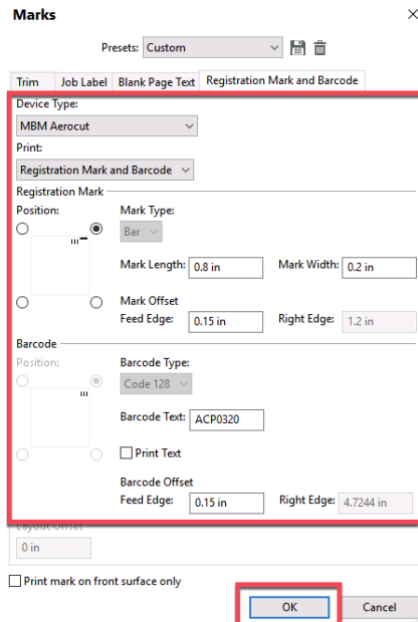
As the name of the template indicates, the template layout is designed for business card jobs with a trim box of 3.5 inches wide and 2 inches high, with a .125 inch bleed.

How-to: Automate offline finishing with MBM AeroCut Prime and Velocity finishers

4. To view the default registration marks and barcode under Marks, click **Define**.

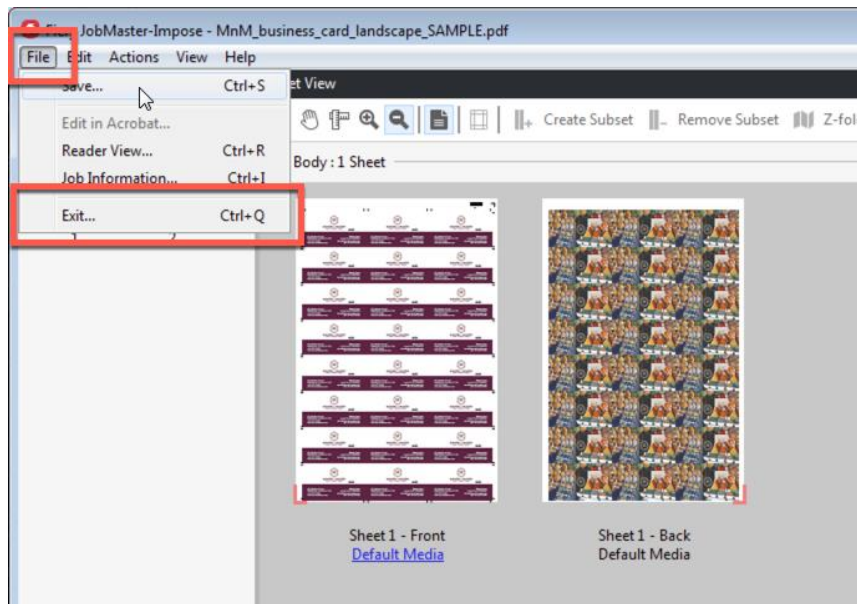


5. Click the **Registration Marks and Barcode** tab. Select MBM AeroCut in the Device Type. The settings in the Impose template are automatically defined. Select **OK**.

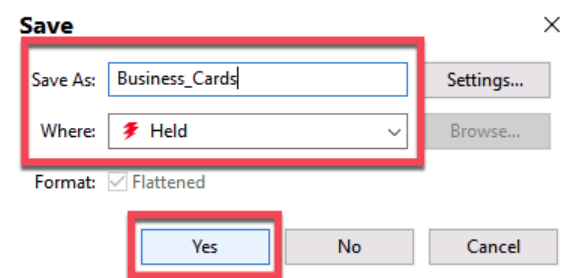


This impose template can be used for automated submission workflows using Hot Folders or JobFlow. You can find more information on Hot Folders in the [How-to: Automate job submission with Fiery tools](#).

6. To save and name the job and exit Impose, click **File > Exit**.



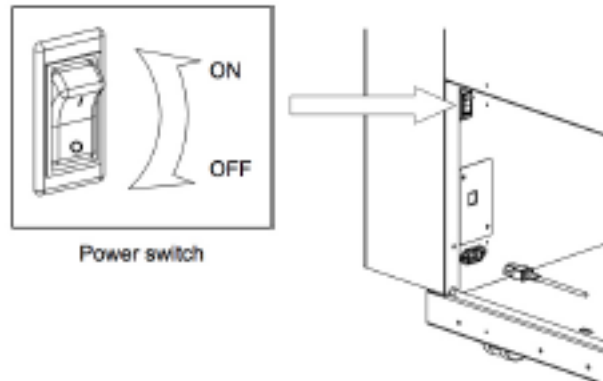
7. Click **Save**, and change the job name to **Business_Cards**. Then click **Yes** when done.



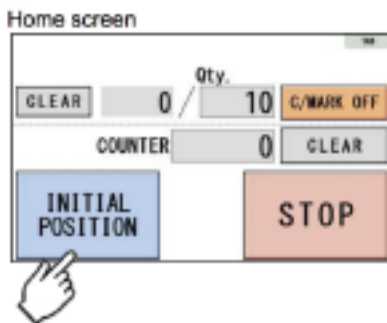
8. The new job is saved in the Held queue. Right-click on the job and select **Print**.

Complete production on the MBM finisher

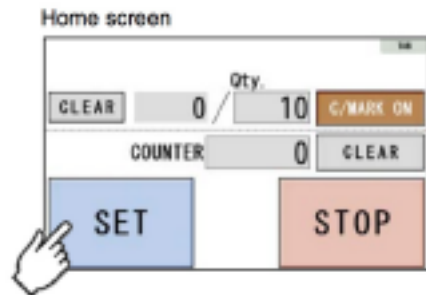
1. Switch the Main Power to **On** position.



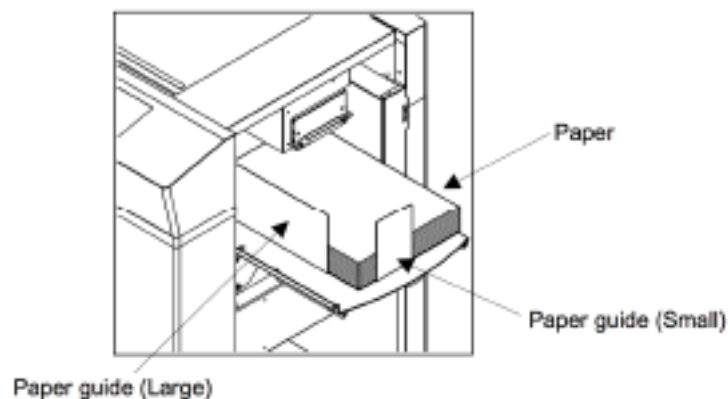
2. On the touch panel, press **INITIAL POSITION**.



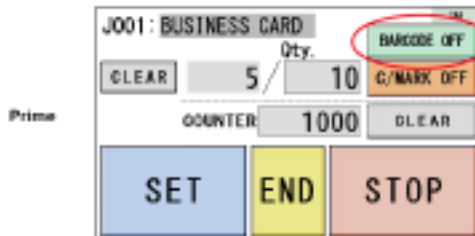
3. On the touch panel, press **SET**.



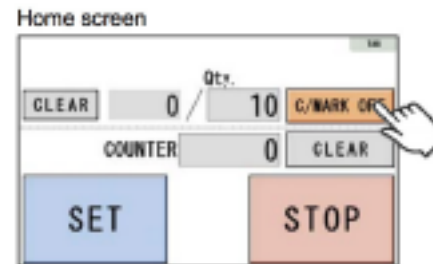
4. Load paper on to the feed table with barcode up and in, use the side guides to secure paper.



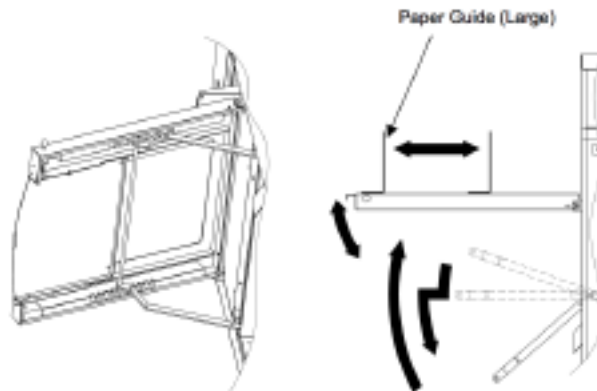
- On the touch panel, select **BARCODE OFF**.



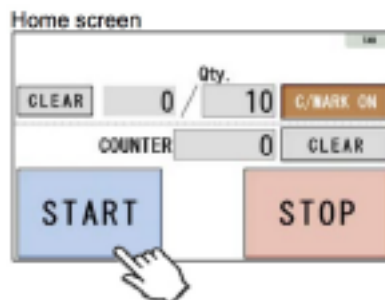
- On touch panel ensure **C/MARK** is in **ON** position.



- Check that the rear conveyor is set and the card catcher is in position.



- On the touch panel, press **START**, AeroCut will read the barcode and automatically setup and run the job.



We develop breakthrough technologies for the manufacturing of signage, packaging, textiles, ceramic tiles, building materials and personalized documents, with a wide range of printers, inks, digital front ends, and a comprehensive business and production workflow suite that transforms and streamlines the entire production process, increasing your competitiveness and boosting productivity. Visit www.efi.com for more information.



Nothing herein should be construed as a warranty in addition to the express warranty statement provided with EFI products and services.

The APPS logo, AutoCal, Auto-Count, Balance, BESTColor, BioVu, BioWare, ColorPASS, Colorproof, ColorWise, Command WorkStation, CopyNet, Cretachrom, Cretaprint, the Cretaprint logo, Cretaprinter, Cretaroller, Digital StoreFront, DirectSmile, DocBuilder, DocBuilder Pro, DockNet, DocStream, DSFdesign Studio, Dynamic Wedge, EDOX, EFI, the EFI logo, Electronics For Imaging, Entrac, EPCount, EPPPhoto, EPRegister, EPStatus, Estimate, ExpressPay, FabriVU, Fast-4, Fiery, the Fiery logo, Fiery Driven, the Fiery Driven logo, Fiery JobFlow, Fiery JobMaster, Fiery Link, Fiery Navigator, Fiery Prints, the Fiery Prints logo, Fiery Spark, FreeForm, Hagen, Inkintensity, Inkware, LapNet, Logic, Metrix, MicroPress, MiniNet, Monarch, OneFlow, Pace, Pecas, Pecas Vision, PhotoXposure, PressVu, Printcafe, PrinterSite, PrintFlow, PrintMe, the PrintMe logo, PrintSmith, PrintSmith Site, PrintStream, Print to Win, Prograph, PSI, PSI Flexo, Radius, Remoteproof, RIPChips, RIP-While-Print, Screenproof, SendMe, Sincolor, Splash, Spot-On, TrackNet, UltraPress, UltraTex, UltraVu, UV Series 50, VisualCal, VUTEk, the VUTEk logo, and WebTools are trademarks of Electronics For Imaging, Inc. and/or its wholly owned subsidiaries in the U.S. and/or certain other countries.

All other terms and product names may be trademarks or registered trademarks of their respective owners, and are hereby acknowledged.