

How-to:

Specify job content
using JDF files and
submit them to a Fiery
server through Fiery
Hot Folders



How-to: Specify job content using JDF files and submit them to a Fiery server through Fiery Hot Folders

Feature overview

Fiery® JDF technology provides a way to automate job ticket production processes using JDF to create a workflow solution on Fiery servers.

Fiery Integration Manager allows you to install or upgrade the Fiery JDF component of the Fiery server, and to configure Fiery JDF settings and options from a remote computer.

Fiery Command WorkStation® administrators can create and share Fiery Virtual Printer and Fiery Server Job Presets to automate selection of Job Properties for commonly used applications, saving time and maximizing productivity. Upstream workflow/software can specify a Virtual Printer or Server Preset through JDF for simple template-based automation.

Fiery Hot Folders provide the user with a simple and automated method of sending documents to a Fiery server. Users can copy or simply drop documents into hot folders. Hot folders also allow users to send JDF tickets to a Fiery server.

Objectives

- Configure your Fiery JDF settings using the Fiery Integration Manager or Fiery Configure to start submitting JDF jobs to your Fiery server.
- Create/edit a JDF job that will be processed by the Fiery server, referencing the content file and its location.
- Send JDF files to a Fiery server using Fiery Hot Folders;
- Check Job Errors and adjust Job Settings after hot folder submission.

Additional resources

Atom is a free, open-source text and source code editor for macOS, Linux and Microsoft Windows®, and will be used to create and edit

JDF tickets in this guide. To install Atom, go to: <https://atom.io>

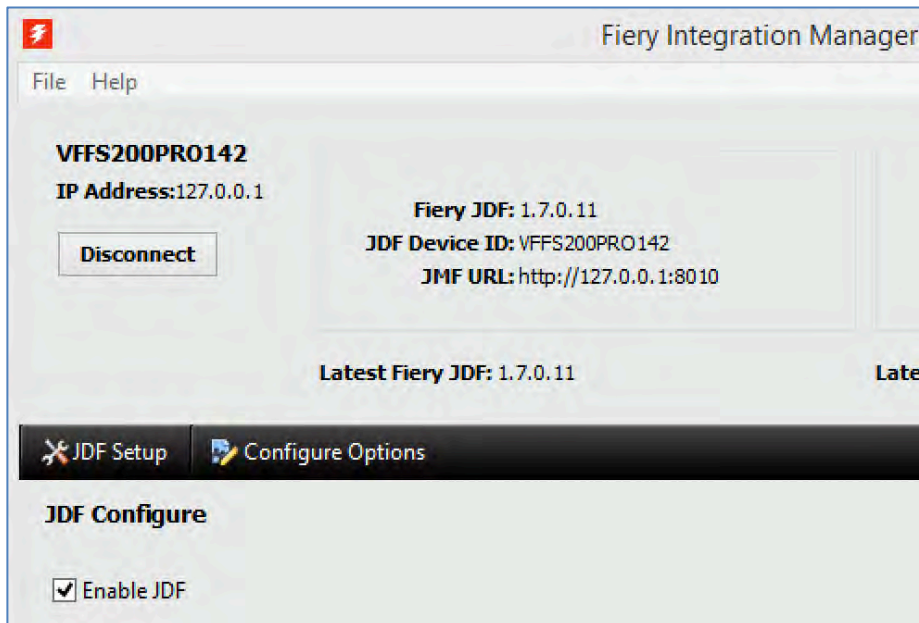
For additional software downloads, training resources, and more, go to [Fiery Online Resources](#).

Before you begin

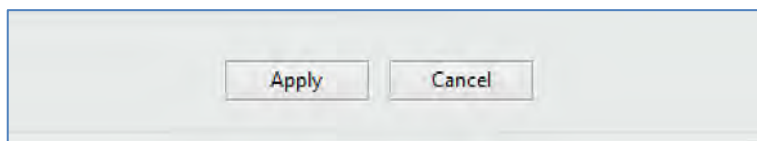
- Have a Fiery server with Fiery JDF supported. To check whether your Fiery server supports Fiery JDF, go to: <https://www.efi.com/products/fiery-servers-and-software/fiery-integration/fiery-jdf/supported-printers/> and select your printer.
- Open Fiery Command WorkStation 6 or later. Connect to your Fiery server.
- Install the latest Fiery Integration Manager. To download the latest version, go to: <https://www.efi.com/products/fiery-servers-and-software/fiery-integration/fiery-jdf/download/>
- To execute the example described in this How-to Guide, you need to unzip the JDF file, called **HTTPURL-1.jdf** that is included in this how-to guide, and save it on your desktop.
- To configure your Fiery JDF using the Fiery Integration Manager, check the how-to guide: Configure Fiery JDF settings with Fiery Integration Manager.
- Install Fiery Hot Folders on the computer running Command WorkStation by using Fiery Software Manager.
- Make sure the printer and Fiery server have been calibrated before printing any output.

Configure your Fiery JDF settings using Fiery Integration Manager or Fiery Configure

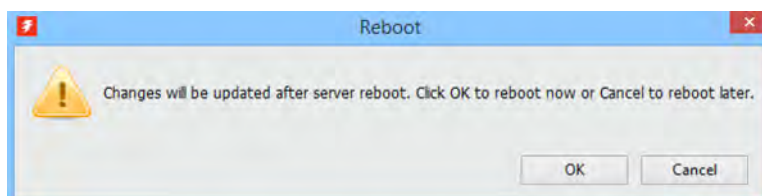
1. Open the Fiery Integration Manager at your server. If your Fiery server does not have the Integration Manager installed, please take a look at the **Before you begin** notes, in order to learn how to install/upgrade and configure your Fiery Integration Manager.
 - a. You will need to enable the JDF option by selecting the **Enable JDF** checkbox in order to allow the Fiery server to use JDF workflows. When this option is not enabled, all the other options below it will be grayed out.



- b. After changing any settings in the **Configure Options** tab, you need to click the **Apply** button for the changes to take effect. If you click the **Cancel** button, nothing will change.



- c. If you click the **Apply** button, a new message will appear, informing you that the Fiery server needs to reboot to update with the new JDF Setup configuration. Click **OK** to confirm.



Create/edit a JDF job to be processed by the Fiery server, referencing the content file and its location.

In this example, we will use a JDF ticket that can be submitted to a Fiery server in different ways. This example file is provided along with this how-to guide in a zipped file.

Unzip the example file and copy it to the computer desktop that is running Fiery Command Workstation.

You can create or edit JDF files using any text editors. In this guide we will use **Atom**, which is a free text editor. Take a look at the **Additional resources** area in the beginning of this guide to see how to download a version for your Windows or macOS system.

1. **Open** the JDF example file called **HTTPURL-1.jdf** using the Atom text editor or another application of your choice. Here you can see that a JDF file is an xml file and has several internal components that are used to supply instructions for the Fiery server about how to get the file content, process it, and print this job ticket.

A JDF file can provide more job specifications such as media specifications, color mode, layout, and finishing — depending on the device capabilities of each print engine. Here we'll just focus on the location of your content file.

```

1  <?xml version="1.0" encoding="UTF-8"?>
2  <JDF ID="ID1" JobPartID="JPI1" Type="Combined" Types="LayoutPreparation Imposition Interpreting Rendering
   * DigitalPrinting" Activation="Active" Status="Ready" Version="1.3" Category="DigitalPrinting" ICSVersions="IDP_L1-1.0
   * Base_L1-1.0" MaxVersion="1.3" xmlns="http://www.CIP4.org/JDFSchemas 1.1" DescriptiveName="HTTPURL-1" JobID="JID1">
3
4      <ResourcePool>
5
6          <RunList Class="Parameter" ID="RL1" Status="Available" PartIDKeys="Run">
7              <RunList Run="0">
8                  <LayoutElement>
9                      <FileSpec URL="https://www.efi.com/library/efi/documents/799/sampledoc_fgs_newsletter_ltr_en_us.pdf"/>
10                     </LayoutElement>
11                 </RunList>
12             </RunList>

```

2. For now, do not change anything in the **HTTPURL-1.jdf** file. It will be submitted to the Fiery server with this external URL value specified in the **FileSpec** tag.

In this example you can check the content of the **FileSpec** tag. As you can see, there is a URL specified in the xml tag: <FileSpec URL="https://www.efi.com/library/efi/documents/799/sampledoc_fgs_newsletter_ltr_en_us.pdf"/>

Here you can see that the file content you will use for this job ticket is a PDF file located on the internet http location (**http://jdf.efi.com/docs/sample/xyz.pdf**).

You can specify your own location using this File Spec tag referencing the URL where Fiery JDF and Fiery Server will reach to get this content file.

This URL can use different location protocols like: http, local Windows paths, shared locations, FTP, or SMB.

How-to: Specify job content using JDF files and submit them to a Fiery server through Fiery Hot Folders

Here you have some examples of different ways of stating the file locations:

For local Windows paths, it will be:

```
<FileSpec URL="c:\1&2.pdf"/>
```

For a shared location, it will be:

```
<FileSpec URL="file://10.100.242.16/wwwroot/input.pdf"/>
```

For FTP, it will be:

```
<FileSpec URL="ftp://10.100.242.16/input.pdf"/>
```

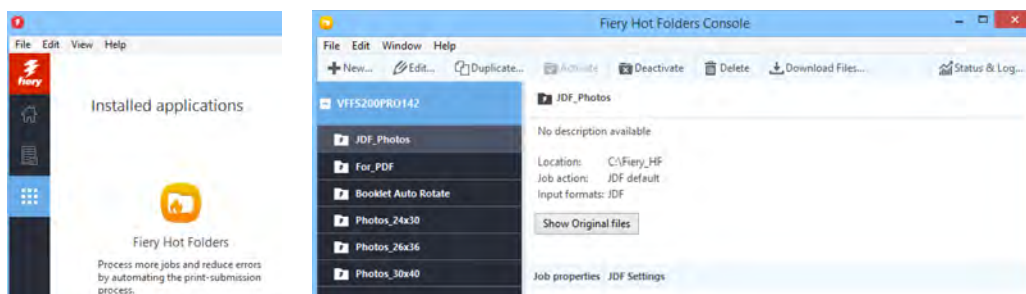
For an FTP location, you may need to supply the user and password to access the remote server using the Common Global Path feature in Fiery Integration Manager or Fiery Configure. For more information about configuring the Common Global Path take a look at the how to guide: [Configure Fiery JDF settings with Fiery Integration Manager](#).

Sending JDF files to a Fiery server using Fiery Hot Folders.

In order to send JDF files to process using Fiery Hot Folders, you first need to create a hot folder that is configured to work with JDF files.

1. Launch the Fiery Hot Folders application. You can open it using the **Apps and Resources** link at the left of the Fiery Command WorkStation menu, or directly from the Windows applications menu.

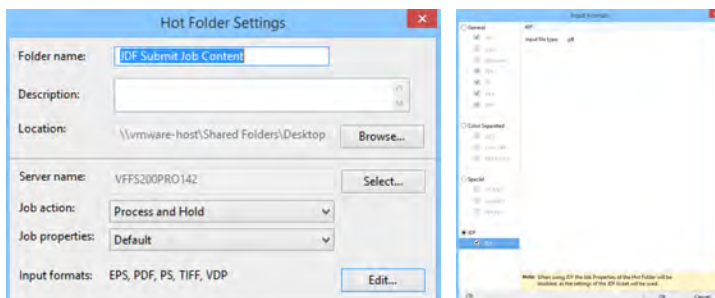
The Fiery Hot Folder Console window will open, showing the Fiery servers list and hot folders that have already been created.



2. Click the **+ New...** icon in the toolbar to create a new hot folder.

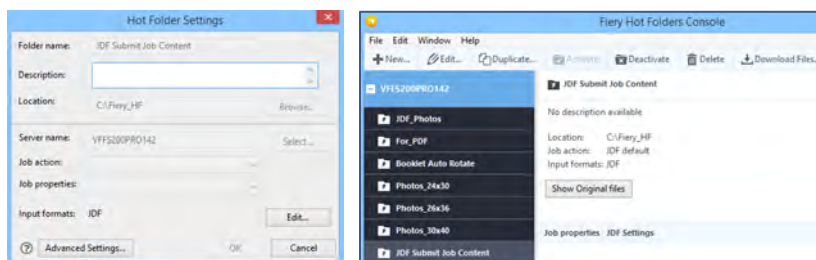
How-to: Specify job content using JDF files and submit them to a Fiery server through Fiery Hot Folders

3. In the new window, **Hot Folder Settings**, fill in the **Folder name**, and give a **Description** if necessary.
4. Choose the location for this hot folder. It can be at the local Fiery server or a network location. In this example, you can use **Desktop** or **C:\Fiery_HF**.
5. Use the **Select** button to choose the Fiery server you want to connect to.
6. The **Server name** field will now display the server's name, and also the **Job action** and the **Job properties** with the options and configurations available for that server.
 - a. The Job action and Job properties settings here will not take effect because the hot folder will try to use the JDF instructions and JDF settings for the Fiery server. So you can simply leave it as it is.
 - b. For the Job Properties, leave the **Default** option, because Fiery JDF should use JDF file properties instead.
7. Click the **Edit** button in the **Input Formats** option to choose the file input format that this new hot folder will use. As you can see, JDF is not an input format default option.
 - a. Click at the **JDF** option in the left pane of the **Input Formats** window. That will disable all the other options above it.
 - b. Also, click the **JDF** checkbox and you will see a note: "When using JDF, the Job Properties of the hot folder will be disabled, as the settings of the JDF ticket will be used."
 - c. Click **OK** to confirm and close the window.



- d. Now back at the **Settings** window, you can see that **Job action** and **Job properties** are empty, now that JDF is the input format that should handle those settings directly.

You can leave the **Advanced options** as they are, and click the **OK** button to complete the hot folder creation.



How-to: Specify job content using JDF files and submit them to a Fiery server through Fiery Hot Folders

8. Now, with Fiery Hot Folders Console window open, you can click the **Download Files...** icon, or directly drag and drop the JDF file **HTTPURL-1.jdf** in to the hot folder on Windows Explorer to submit it to Fiery server.

You can also copy and paste the JDF file on to the hot folder or right-click the file and select **"Download to Hot Folder."** Then chose the hot folder's name that you created for this example.

9. Check in the Command WorkStation **Held** queue to see if your JDF file was processed correctly.

Checking Job Errors and adjusting Job Settings after hot folder submission.

After submitting this JDF file to the hot folder using any available method, the Fiery system will try to process it using all the specifications that are inside the JDF file.

If the JDF file does not describe all the necessary information the Fiery server needs to process a job ticket, some errors can occur.

In the JDF file we are using an example, you can see in the media information does not reference a **Media Name** or **Product ID**, there is only a dimension of: "612 792".

The dimension in the JDF file is in points, which is part of the JDF standard, and that dimension is equivalent to US Letter size (8 ½ x 11). The same happens to A4, which has the dimension size equal to "595 842" in points.

```

24  </DigitalPrintingParams>
25
26  <Component Class="Quantity" ID="C1" ComponentType="FinalProduct" Status="Unavailable"/>
27
28  <Media ID="Res_1" Class="Consumable" Status="Available" Dimension="612 792" >
29  <Location LocationName="AutoSelect"/>
30  </Media>

```

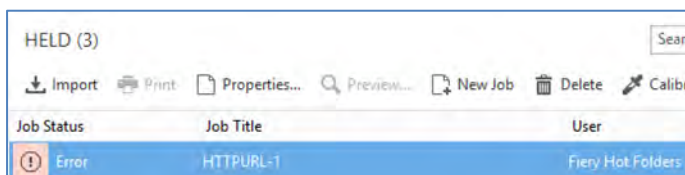
So, when a JDF file is submitted to the Fiery server, the server attempts to automatically map the specified media to a correspondent entry in the **Paper Catalog**. However, if not enough media attributes are specified in the media tag, the Fiery server cannot decide which Paper Catalog entry it maps the media to (For example, there are 2 letter-sized Paper Catalog entries on the Fiery server). In that case, you will get an error.

Here you will learn how to correct media mapping from Command WorkStation when the automatic media mapping through JDF has failed with an error.

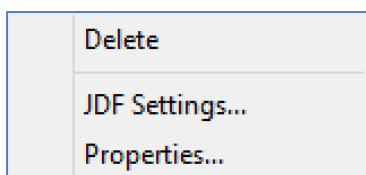
For more details about how to completely automate media mapping using JDF files to the Fiery Paper Catalog, take a look at the how-to guide: Automate media workflow with Fiery JDF.

How-to: Specify job content using JDF files and submit them to a Fiery server through Fiery Hot Folders

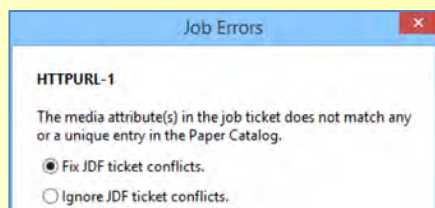
1. First, check the **Job status** at the **Held queue**. You will be able to see if there is an error icon on that job. You can correct the error using these options:



- a. Do a **right click** over the job error selected in the **Job queue**. Three different options will appear: **Delete**, **JDF Settings**, and **Properties**.



The **Delete** option will eliminate this job from the **Held queue**. The **JDF Settings...** option will give you the ability to change some of the JDF attributes for this specific job, and the **Properties** option will show a job error window that will let you choose between **Fix these JDF conflicts** or **Ignore** them.



The **Fix JDF ticket conflicts** option will have the same effect as choosing the **JDF Settings** from the previous right-click list. But this window will also let you **Ignore JDF ticket conflicts** and the Fiery server will try to use the closest information in the Paper Catalog to process it.

If you chose the "Ignore..." option, a new warning will be shown in this window: "You will lose some JDF media information" for this job ticket.

But, in this case, select the **Properties** option.

- b. A **Job Errors** window will appear showing which errors the Fiery server found.

In this example, some media attributes do not match with any available media in the Paper Catalog.

Click on the **Fix JDF ticket conflicts** option to analyze and correct these conflicts and process the job.

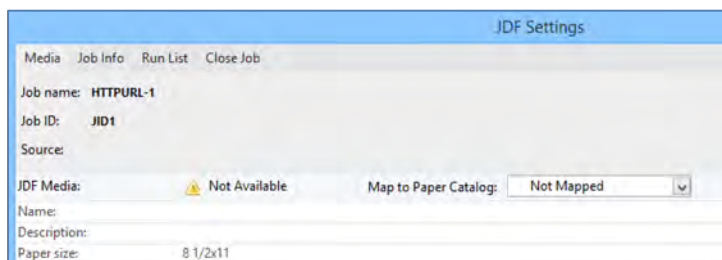
How-to: Specify job content using JDF files and submit them to a Fiery server through Fiery Hot Folders

- c. A new window, **JDF Settings**, will open, showing four tabs with specific information about JDF job settings: Media, Job Info, Run List, and Close Job.

The Media tab will list all the data related to the media that should be used to produce this job ticket. It shows the JDF media and the mapped media from the Fiery Command WorkStation Paper Catalog.

As you can see, the JDF media information is “Not Available” for this JDF file. The only information that the JDF file had was paper size and no other media attributes. That’s why the Fiery server was not able to decide which media to map and stopped this job to let you choose which media you want to map manually.

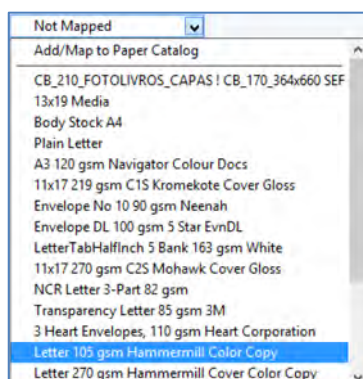
Click the **Map to Paper Catalog** dropdown list.



- d. In the **Map to Paper Catalog** dropdown list, you will see the list of all available media from your Fiery Command WorkStation Paper Catalog, as well as option to **Add/Map to Paper Catalog**. This list will vary for each different Fiery Server that you have connected.

In this example, you need to select a **Letter** media size, because the paper size in the JDF file was “612 792” points, or equivalent to letter size (8 ½ x 11). If you choose a different size, the Fiery server will process it, but you might print with an unintended paper size.

In this example, select the **Letter 105 gsm Hammermill Color** media option. In case you don’t have this media stock, choose any other letter size available from your list.



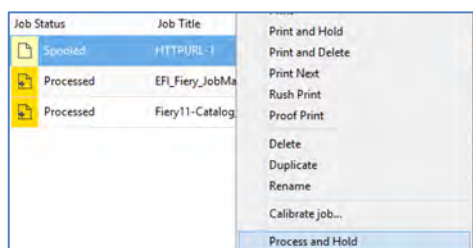
This will map your chosen Paper Catalog media option for this JDF setting to resolve the media-mapping conflict.

How-to: Specify job content using JDF files and submit them to a Fiery server through Fiery Hot Folders

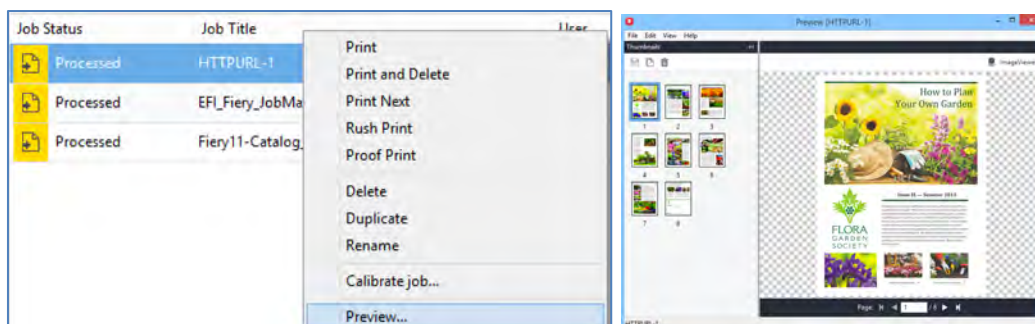
JDF Media:	Not Available	Map to Paper Catalog:	Letter 105 gsm Hamm...
Name:	Letter 105 gsm Hammermill Color Copy		
Description:	Hammermill Color Copy 102467 8 1/2" x 11" 105 gsm Photo White Ultra smooth		
Paper size:	8 1/2x11	8 1/2x11	
Weight (gsm):	105		
Color name:	White		
Grain direction:	Long		
Type:	Paper		
Type details:	Plain		
Product ID:	102467		
Feed direction:	Long edge feed		

Click the **OK** button to apply and close this **Job Settings** window.

2. After mapping the media to the job, you will see a **Spooled** icon in the job queue, showing the error was eliminated and you are ready to continue to process this Job.
 - a. Right-click on the job selected and choose the **Process and Hold** option to continue.



3. Once the Fiery server finishes processing this job, you will see a **Processed** icon in the Job queue and also can check **Preview** or any other action you want to perform with this job ticket.
 - a. Right-click on the job and choose **Preview** from context list.



Now you can see that your media was mapped correctly to the JDF Settings, and that the entire PDF content specified by the JDF file was downloaded and applied to this job ticket.

Using the **JDF Settings** window, you can check to make sure that the original PDF content was used for this job ticket in the **Run List** tab.

JDF Settings			
Media	Job Info	Run List	Close Job
Job name: HTTPURL-1			
Job ID: JID1			
Source:			
<div> Add Edit Remove </div>			
#	Path	Page Range	Total
1.	http://jdf.efi.com/docs/sample/pdf/fgs_newsletter_itr		8



EFI fuels success.

We develop breakthrough technologies for the manufacturing of signage, packaging, textiles, ceramic tiles, and personalized documents, with a wide range of printers, inks, digital front ends, and a comprehensive business and production workflow suite that transforms and streamlines the entire production process, increasing your competitiveness and boosting productivity. Visit www.efi.com or call 650-357-3500 for more information.



Nothing herein should be construed as a warranty in addition to the express warranty statement provided with EFI products and services.

The APPS logo, AutoCal, Auto-Count, Balance, BESTColor, BioVu, BioWare, ColorPASS, Colorproof, ColorWise, Command WorkStation, CopyNet, Cretachrom, Cretaprint, the Cretaprint logo, Cretaprinter, Cretaroller, Digital StoreFront, DirectSmile, DocBuilder, DocBuilder Pro, DockNet, DocStream, DSFdesign Studio, Dynamic Wedge, EDOX, EFI, the EFI logo, Electronics For Imaging, Entrac, EPCount, EPPhoto, EPRegister, EPStatus, Estimate, ExpressPay, FabriVU, Fast-4, Fiery, the Fiery logo, Fiery Driven, the Fiery Driven logo, Fiery JobFlow, Fiery JobMaster, Fiery Link, Fiery Navigator, Fiery Prints, the Fiery Prints logo, Fiery Spark, FreeForm, Hagen, Inktenzity, Inkware, LapNet, Logic, Metrix, MicroPress, MiniNet, Monarch, OneFlow, Pace, Pecas, Pecas Vision, PhotoXposure, PressVu, Printcafe, PrinterSite, PrintFlow, PrintMe, the PrintMe logo, PrintSmith, PrintSmith Site, PrintStream, Print to Win, Prograph, PSI, PSI Flexo, Radius, Remoteproof, RIPChips, RIP-While-Print, Screenproof, SendMe, Sincolor, Splash, Spot-On, TrackNet, UltraPress, UltraTex, UltraVu, UV Series 50, VisualCal, VUTEk, the VUTEk logo, and WebTools are trademarks of Electronics For Imaging, Inc. and/or its wholly owned subsidiaries in the U.S. and/or certain other countries.

All other terms and product names may be trademarks or registered trademarks of their respective owners, and are hereby acknowledged.

© 2019 ELECTRONICS FOR IMAGING, INC. ALL RIGHTS RESERVED. | WWW.EFI.COM