

# **How-to:** Automate offline finishing with Duplo finishers

Part 2: Create a custom layout to automate a coupon job



## Feature overview

Fiery® Impose is the most intuitive PDF-based sheet imposition software on the market. Tight integration with Fiery Command WorkStation®, makeready software, and prepress tools helps automate print job submission.

Fiery Impose templates allow users to save the most common job layouts to automate the imposition process. Templates can also include barcodes and registration marks. These are recognized by the barcode scanner in Duplo finishing equipment using the \* JobID \* format.

The barcodes and registration marks instruct the Duplo finisher on how to position blades, cutters, and creasers to finish the document.

Integrating Fiery Impose with Duplo finishers brings dramatic productivity gains to job preparation and finishing by automating the process. This saves time plus minimizes waste and errors.

This how-to guide is divided in to the following two parts:

- **Part 1: Use templates from the library to automate most common jobs**

Part 1 provides a set of common Fiery Impose templates that include Duplo barcodes. The templates can be imported in the Duplo finisher equipment and used to make the printed output ready for finishing.

*This feature is compatible with Duplo DC-615, DC-616, DC-618, DC-645, DC-646, DC-745 and DC-746 offline finishers.*

- **Part 2: Create a custom layout to automate a coupon job**

Part 2 provides the steps to create a new layout on the Duplo finisher controller. This layout can be imported in Fiery Impose so that users can create a template to automate future jobs from job submission to finishing.

*This feature is compatible with the Duplo DC-618, DC-645, and DC-746 offline finisher.*

## Part 2: Create a custom layout to automate a coupon job

### Objectives

- Create a new layout on the Duplo controller and export the layout xml file
- Import the layout xml file in to Fiery Impose and preview the job
- Create a Fiery Impose template and create a new Fiery Hot Folder workflow.
- Send a job to print.
- Complete production on the Duplo finisher.

### Additional resources

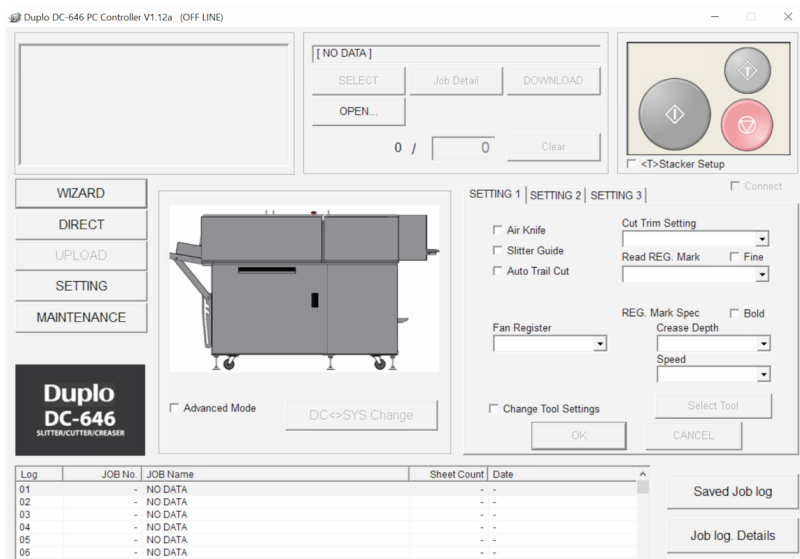
For additional software downloads, training resources, and more, go to: [Fiery Online Resources](#).

### Before you begin

- Open Fiery Command WorkStation 6.4 or later, and connect to at least one Fiery server.
- Activate the Fiery Impose license on the computer running Command WorkStation. Fiery Impose can either be fully licensed or running in trial mode. To request the free 30-day trial for Fiery Impose, go to: [fiery.efi.com/impose/freetrial30](http://fiery.efi.com/impose/freetrial30).
- Place the sample file, **efi\_duplo\_coupon\_sheet\_sample\_hg.pdf**, in the Fiery server HELD queue by dragging the file. Or use the Command WorkStation Import menu option.
- Make sure the printer and Fiery server have been calibrated before printing any output.

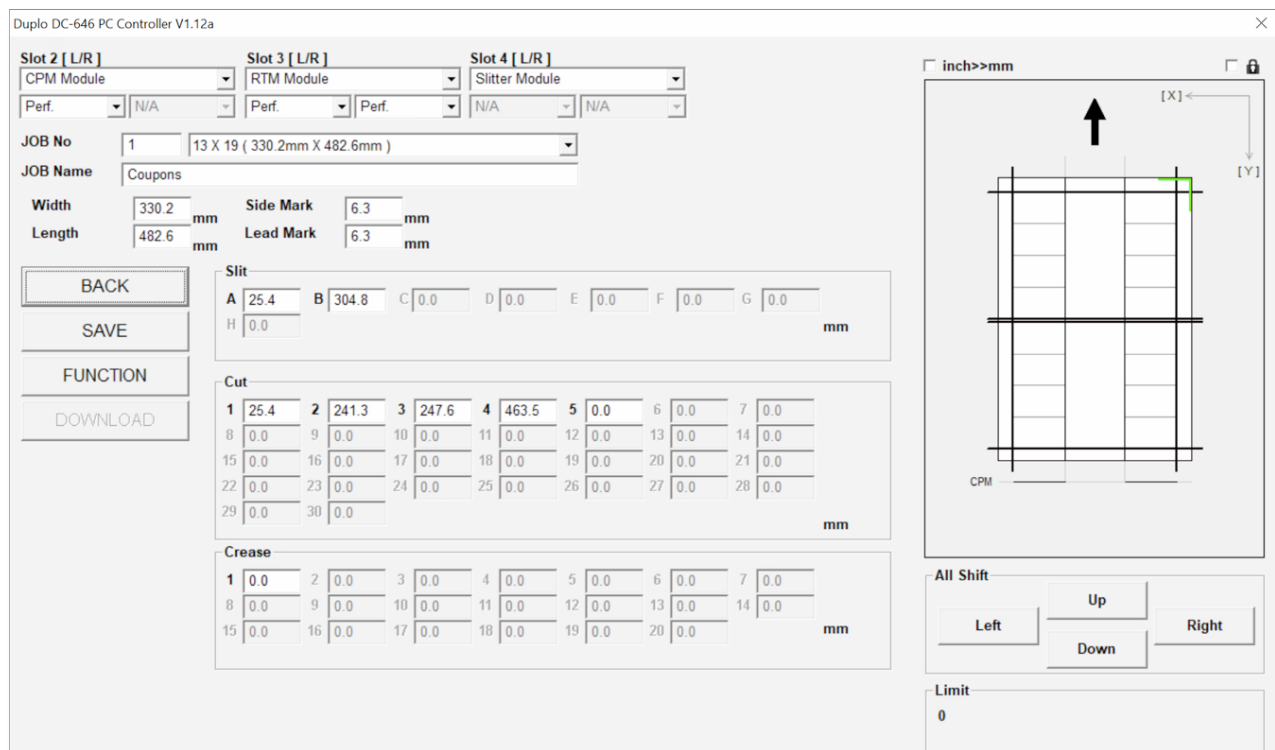
## Create a new layout file on the Duplo controller

1. Open the Duplo PC Controller software.



2. Select the **WIZARD** button to access the Job Creator Wizard.

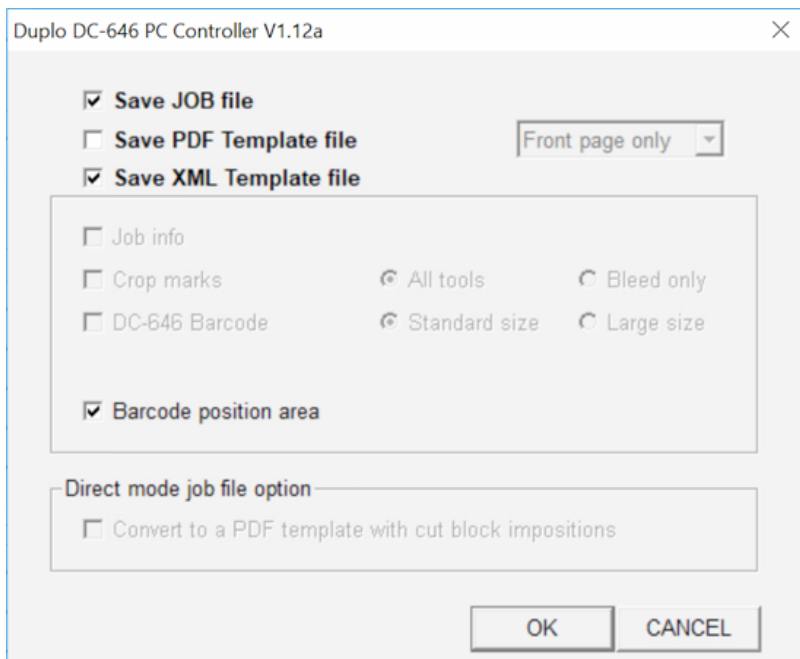
- Only jobs created in simple mode using the wizard will export XML data.



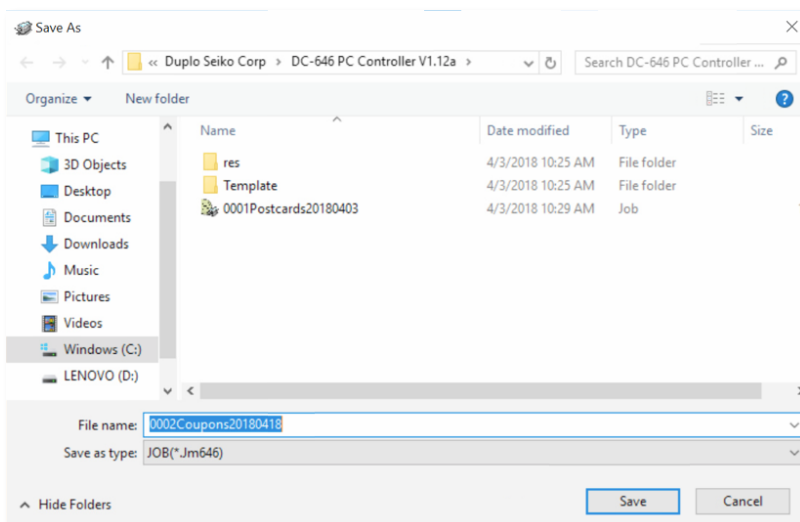
3. Follow the Job Creation Wizard to create the finishing template.

## How to: Create a custom layout to automate a coupon job

4. Once all parameters are set, you will be at the review page.
5. Select the **SAVE** button to access the export functions.
  - Ensure you have selected the **Save XML Template file** box.
  - Press **OK** to access the file explorer menu where you want to save the XML file.



6. Choose a location where the computer running Fiery Command WorkStation can access the file.
  - The Duplo default location will be C:\Duplo Seiko Corp\DC-646 PC Controller V1.xx.



7. Select the **Save** button to store the new template on the workstation.

## How to: Create a custom layout to automate a coupon job

Duplo DC-646 PC Controller V1.12a

Slot 2 [ L/R ]

CPM Module

Perf. N/A

Slot 3 [ L/R ]

RTM Module

Perf.

Slot 4 [ L/R ]

Slitter Module

Perf. N/A

JOB No 21 12 X 18 ( 304.8mm X 457.2mm )

JOB Name elite trifold

Width 304.8 mm

Length 457.2 mm

Side Mark 6.3 mm

Lead Mark 6.3 mm

BACK

SAVE

FUNCTION

**DOWNLOAD**

Slit

A	37.0	B	264.0	C	0.0	D	0.0	E	0.0	F	0.0	G	0.0
H	0.0												

mm

Cut

1	20.0	2	449.5	3	0.0	4	0.0	5	0.0	6	0.0	7	0.0
8	0.0	9	0.0	10	0.0	11	0.0	12	0.0	13	0.0	14	0.0
15	0.0	16	0.0	17	0.0	18	0.0	19	0.0	20	0.0	21	0.0
22	0.0	23	0.0	24	0.0	25	0.0	26	0.0	27	0.0	28	0.0
29	0.0	30	0.0										

mm

Crease

1	163.5	2	0.0	3	0.0	4	0.0	5	0.0	6	0.0	7	0.0
8	0.0	9	0.0	10	0.0	11	0.0	12	0.0	13	0.0	14	0.0
15	0.0	16	0.0	17	0.0	18	0.0	19	0.0	20	0.0		

mm

inch>>mm

[X] [Y]

CPM

All Shift

Left Up Right

Down

Limit

0

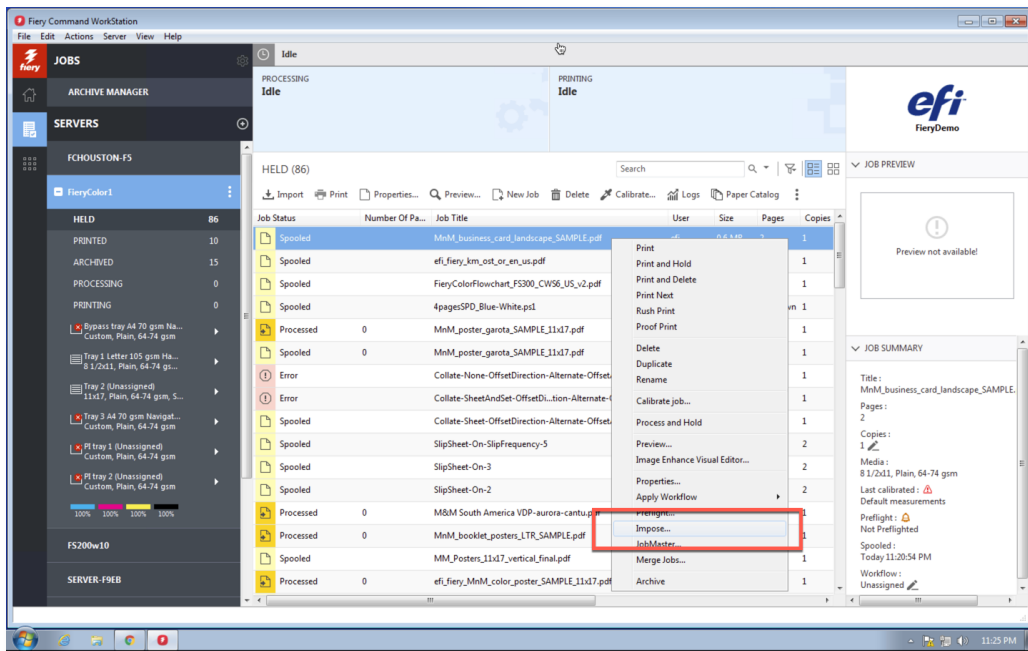
<< [ 1/3 ] >>

8. Select **DOWNLOAD** button to register the new template on the Duplo finisher.

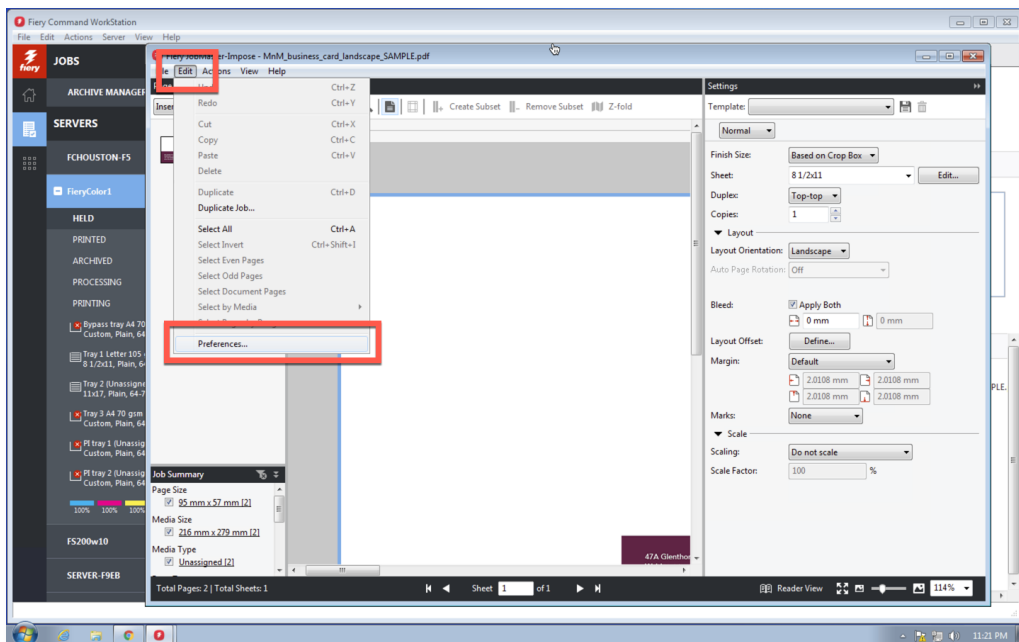
## How to: Create a custom layout to automate a coupon job

# Turn on the Fiery Impose preference for finisher layout import

1. Select any spooled job in the HELD queue. Right-click to select **Fiery Impose**.

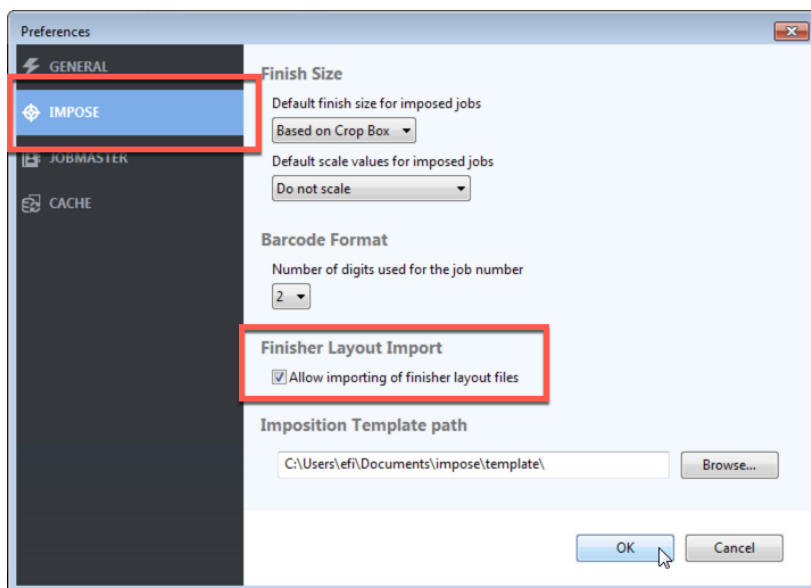


2. In Fiery Impose, go to Edit and select **Preferences**.



## How to: Create a custom layout to automate a coupon job

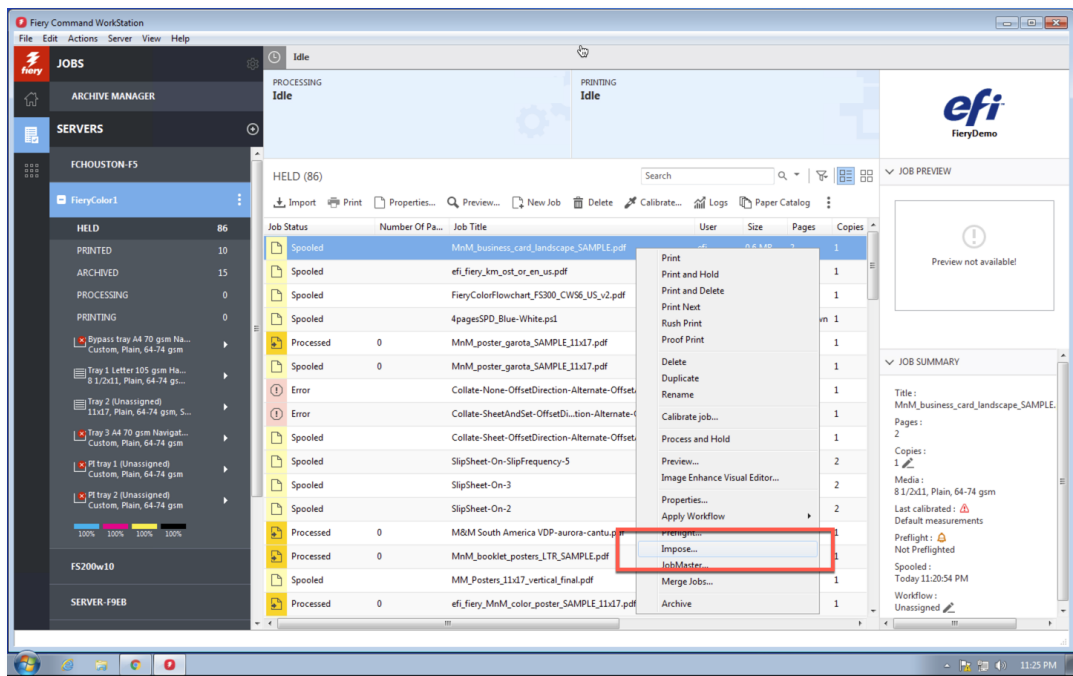
- Click **Impose** to view the preferences for Fiery Impose.



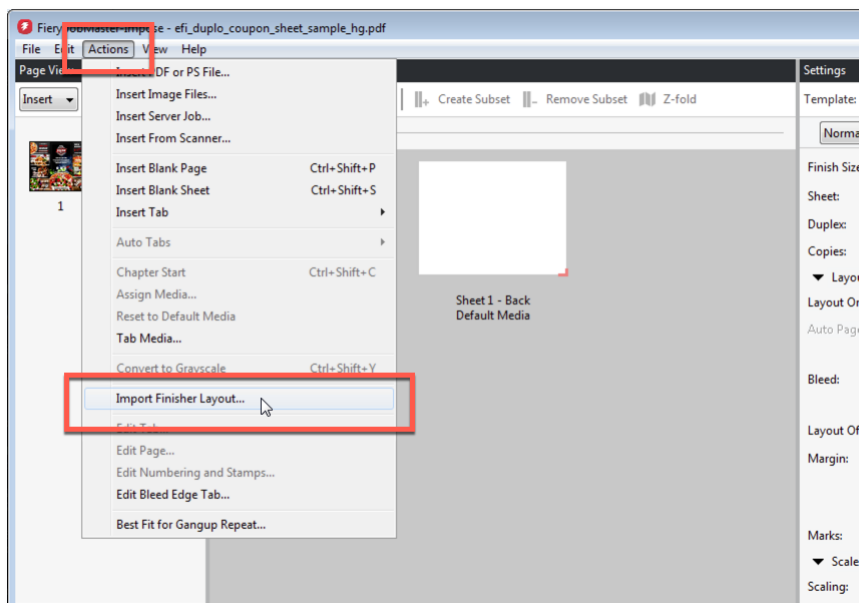
- Click the box to activate **Finisher Layout Import**.
- Select **OK**. This preference setting is set when Fiery Impose is restarted.

## Import the Duplo XML file in to Fiery Impose

1. Select the sample job `efi_duplo_coupon_sheet_sample_hg.pdf` in the HELD queue. Right-click and select **Impose**.

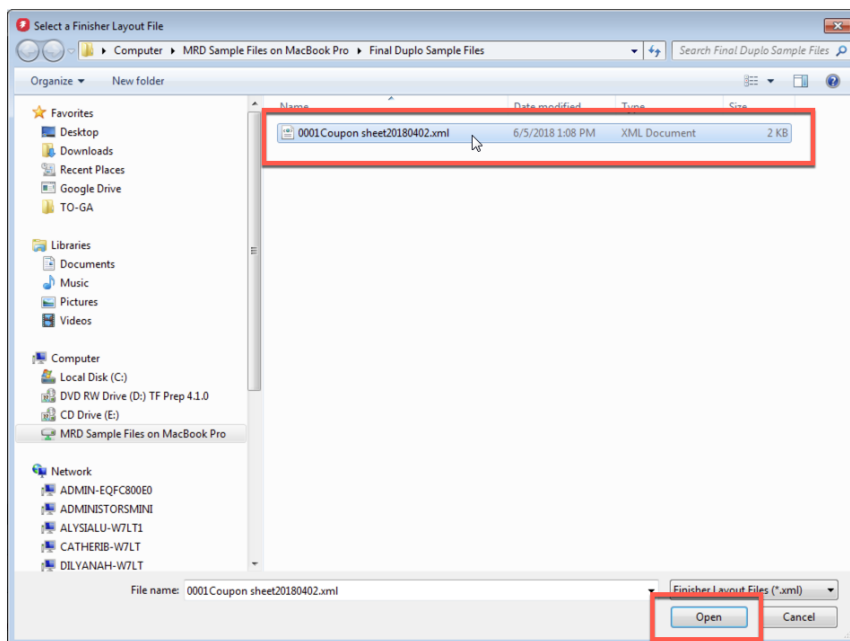


2. Select **Action** from the toolbar and then choose **Import Finisher Layout**.



## How to: Create a custom layout to automate a coupon job

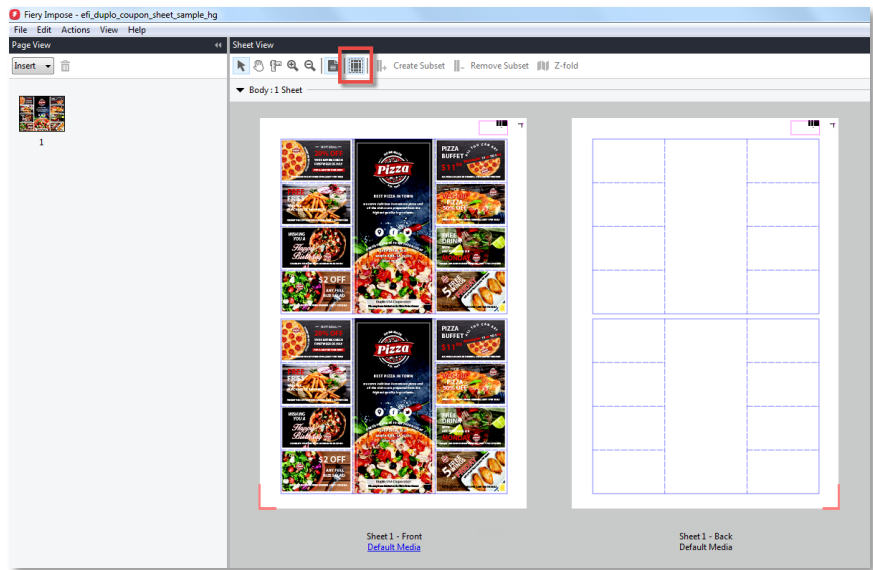
3. Browse to the folder that contains the saved Duplo XML file (0001Coupon sheet20180402.xml), select the file.



4. Select **Open**.

# How to: Create a custom layout to automate a coupon job

5. Click on **Show finisher layout lines** button to display finisher lines.

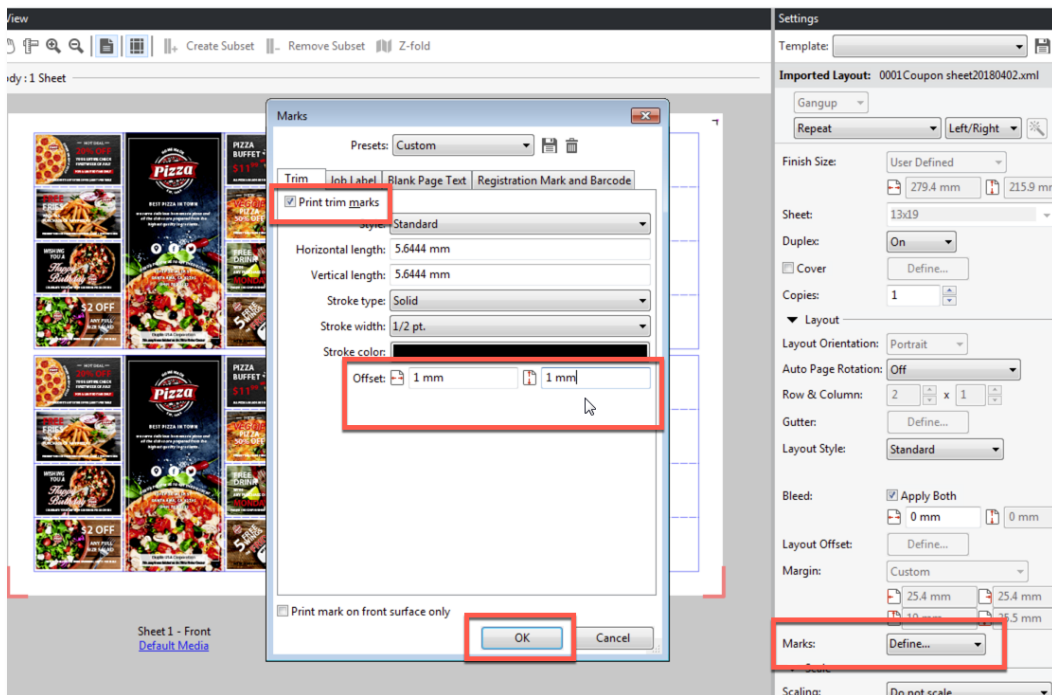


Supported finishing lines include:

Line type	Name	Line pattern
Crease Line	down up	
Perforation Line	perforation micro-perforation slit-score (half-cut) score (crease)	   
Fold	N/A	

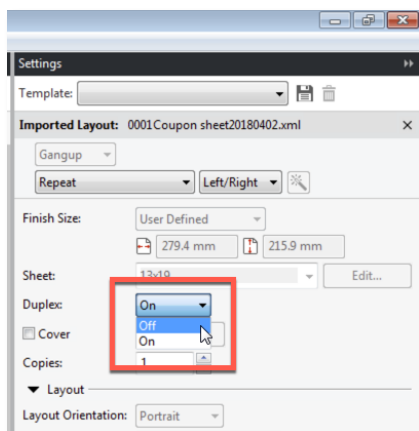
## How to: Create a custom layout to automate a coupon job

6. Add trim marks. The XML file already contains the barcode. So it is automatically enabled.
  - Add a **1mm offset** to both top/bottom and left/right settings so the trim marks don't actually touch the finished piece.
  - Select **Marks: Define.**
  - Select the **Trim** tab, check the box for **Print trim marks**.
  - Set Offset to 1mm on vertical and horizontal.
  - Select **OK**.

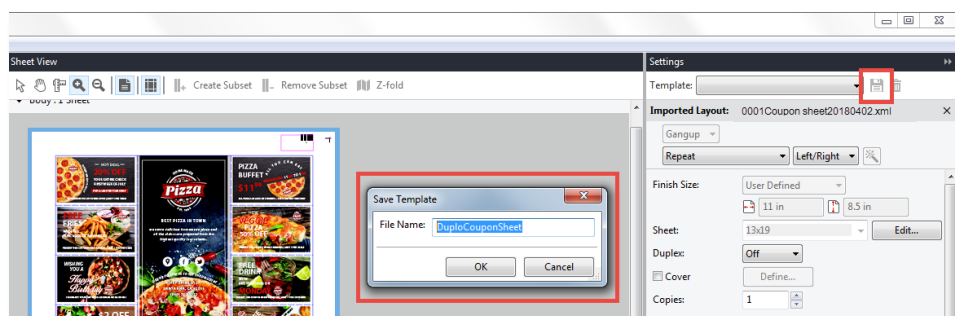


## How to: Create a custom layout to automate a coupon job

7. In the Settings dialog, select **Off** for Duplex.

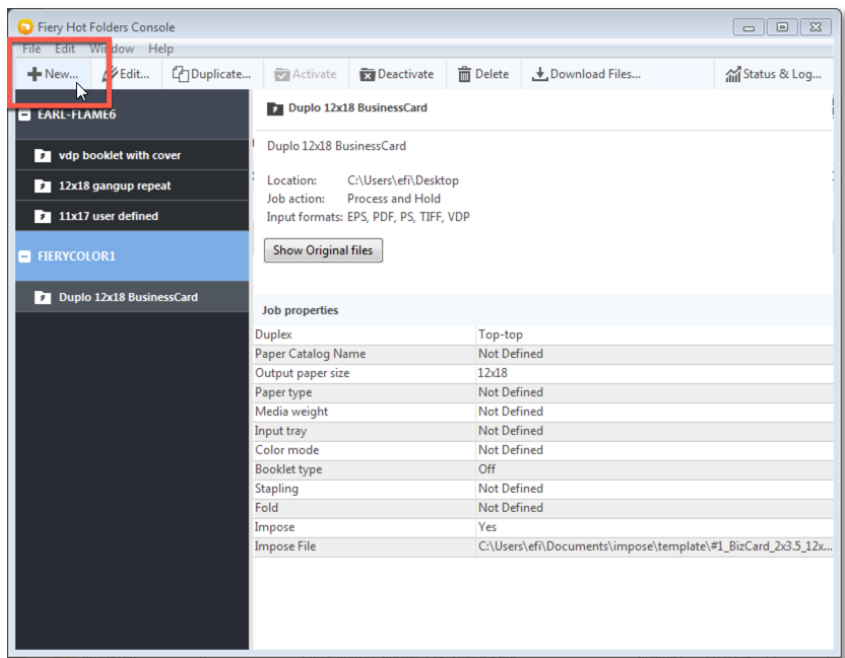


8. To save as a Fiery Impose template, select the **Save** icon, type **duplo\_coupon\_sheet** in the File Name, and select **OK**.

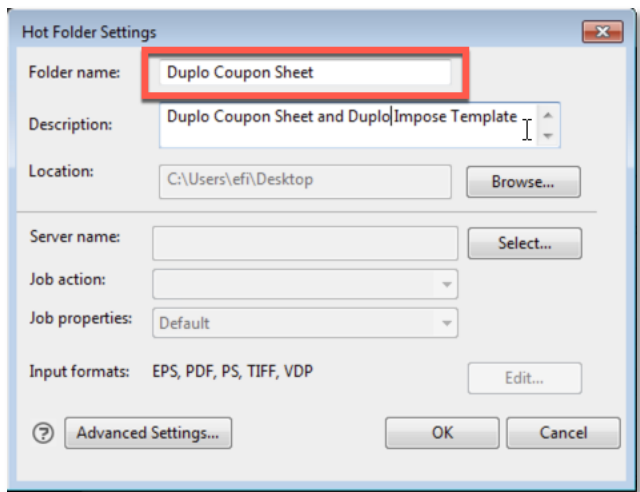


## Create a new Fiery Hot Folder workflow

1. In the Fiery Hot Folders console, click **New** to display the Hot Folders settings window.

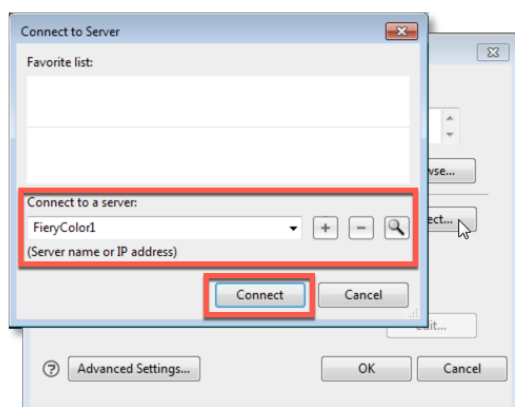
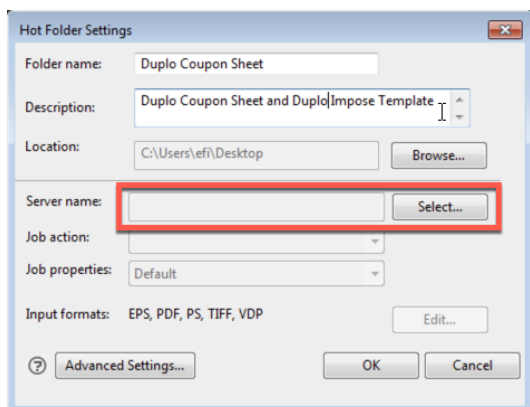


2. In the Folder name field, type **Duplo Coupon Sheet**.
3. Optionally, type a **description** and details about the Hot Folder in the Description field.
4. Click **Browse**, and specify the folder location.

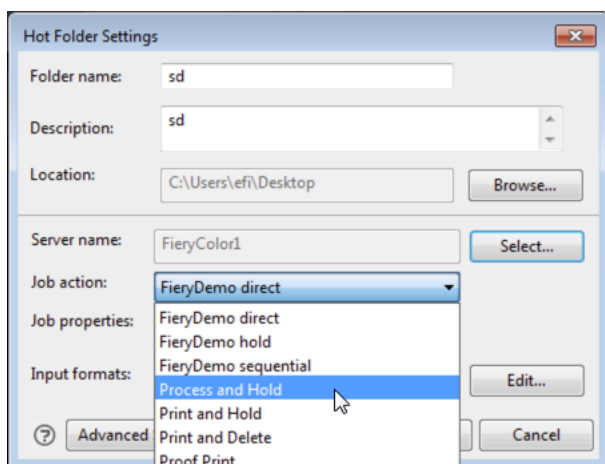


## How to: Create a custom layout to automate a coupon job

5. In Server name, click the **Select** button to specify and connect to the Fiery server. For further instructions, please see [Connecting to a Fiery Server](#).

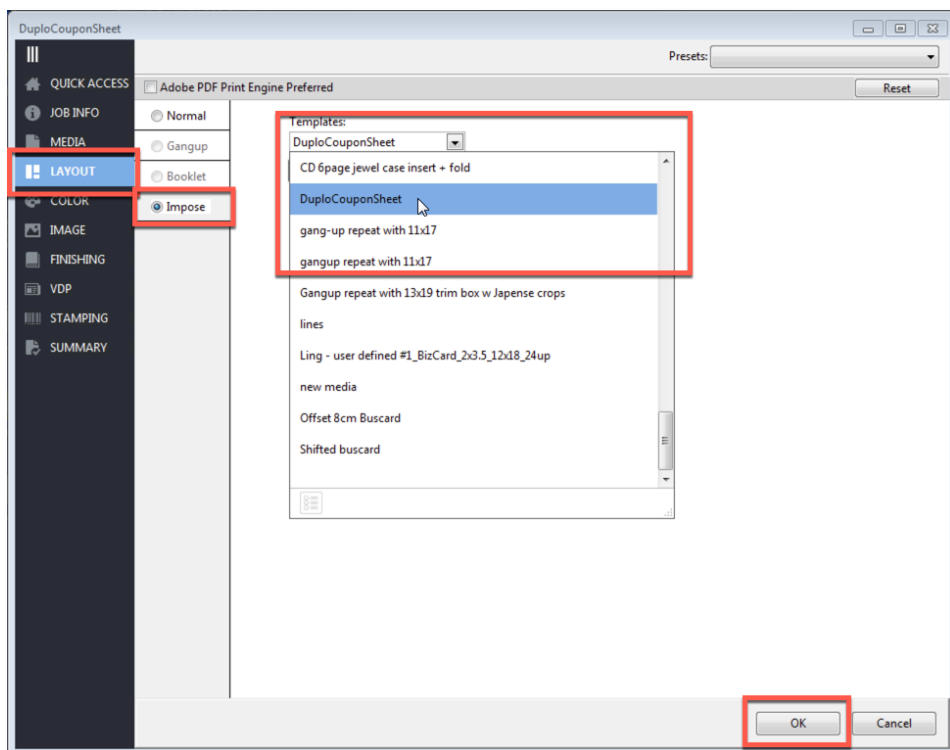


6. In the Job action section, choose the **Fiery server queue** or **job action** from the menu.



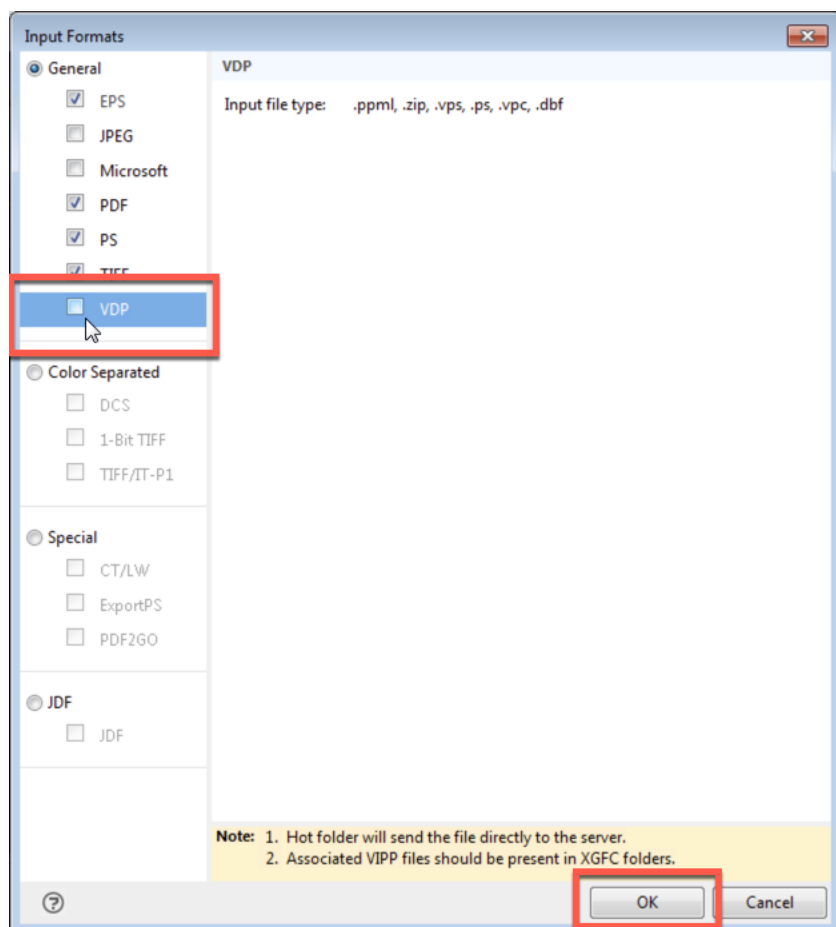
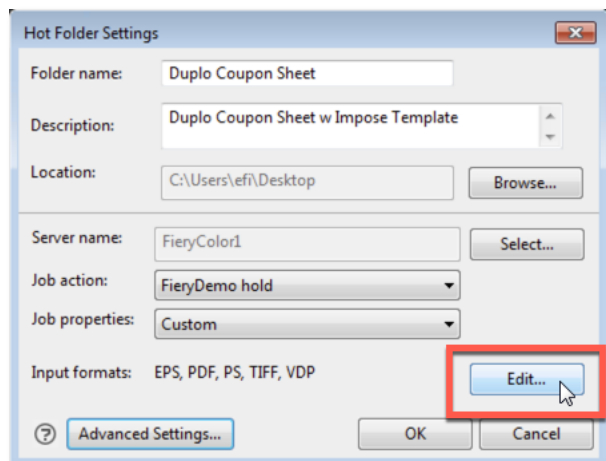
## How to: Create a custom layout to automate a coupon job

7. Select **Job Properties**, pick **LAYOUT**, choose the **Impose** button. In the Template menu select the **DuploCouponSheet** template.



## How to: Create a custom layout to automate a coupon job

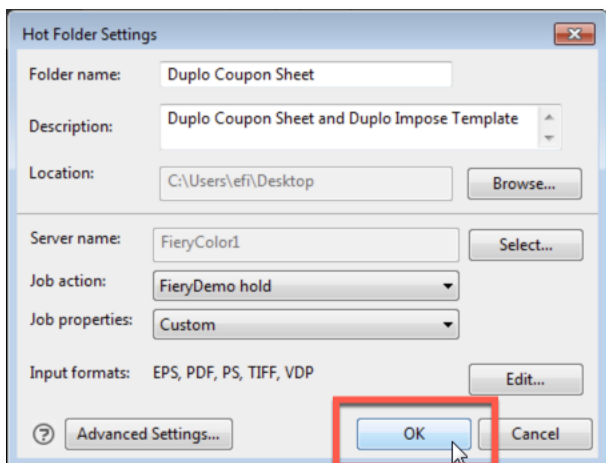
8. Under Input forma, select the **Edit** button and uncheck the box for **VDP**. Select **OK**.



## How to: Create a custom layout to automate a coupon job

6. In the Hot Folders Settings dialog box, select **OK**.

You have now created the Hot Folder and saved it where you have specified in Location. In this instance, it is on the Desktop of our Fiery server.

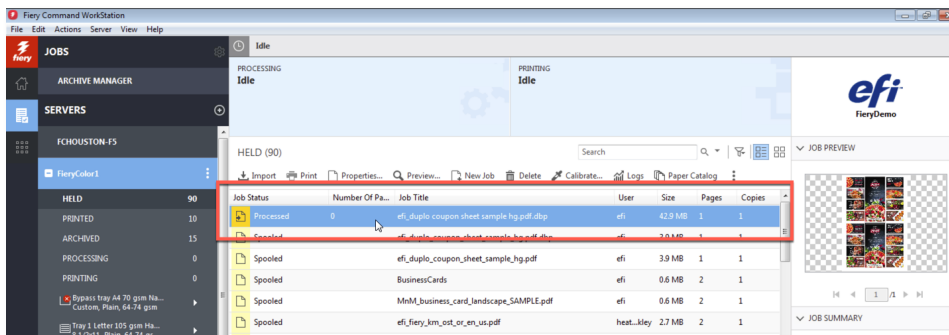


## Send the job to print

1. Drag and drop the sample file **efi\_duplo\_coupon\_sheet\_sample\_hg.pdf** on the **Duplo Coupon Sheet Hot Folder** located on the desktop.

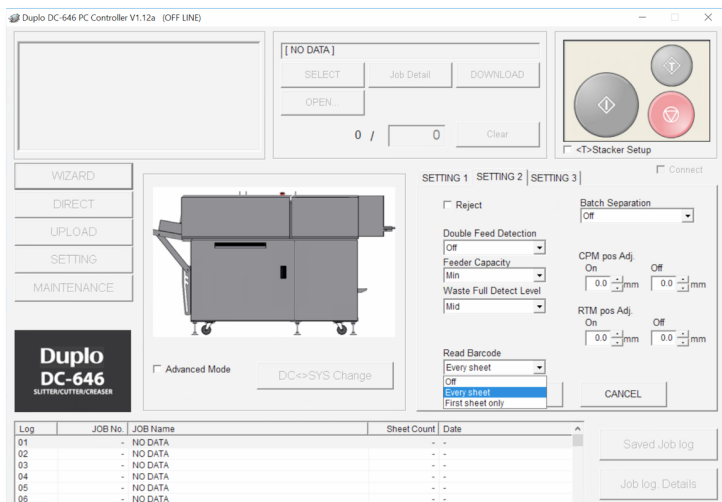


2. In Command WorkStation, release the job to Print.



### Complete production on the Duplo finisher


1. Load printed sheets onto the Duplo DC finisher.
2. In the DC PC Controller, select the **Setting 2** tab.
3. Access the Read Barcode section and select **EVERY SHEET** to activate the barcode scanning feature



4. Press start to run the job. The scanner will automatically detect the finishing template, based on the barcode, and begin processing the job.

## EFI fuels success.

We develop breakthrough technologies for the manufacturing of signage, packaging, textiles, ceramic tiles, and personalized documents, with a wide range of printers, inks, digital front ends, and a comprehensive business and production workflow suite that transforms and streamlines the entire production process, increasing your competitiveness and boosting productivity. Visit [www.efi.com](http://www.efi.com) or call 650-357-3500 for more information.



Nothing herein should be construed as a warranty in addition to the express warranty statement provided with EFI products and services.

The APPS logo, AutoCal, Auto-Count, Balance, BESTColor, BioVu, BioWare, ColorPASS, Colorproof, ColorWise, Command WorkStation, CopyNet, Cretachrom, Cretaprint, the Cretaprint logo, Cretaprinter, Cretaroller, Digital StoreFront, DirectSmile, DocBuilder, DocBuilder Pro, DockNet, DocStream, DSFdesign Studio, Dynamic Wedge, EDOX, EFI, the EFI logo, Electronics For Imaging, Entrac, EPCount, EPPPhoto, EPRegister, EPStatus, Estimate, ExpressPay, FabriVU, Fast-4, Fiery, the Fiery logo, Fiery Driven, the Fiery Driven logo, Fiery JobFlow, Fiery JobMaster, Fiery Link, Fiery Navigator, Fiery Prints, the Fiery Prints logo, Fiery Spark, FreeForm, Hagen, Inkensity, Inkware, LapNet, Logic, Metrix, MicroPress, MiniNet, Monarch, OneFlow, Pace, Pecas, Pecas Vision, PhotoXposure, PressVu, Printcafe, PrinterSite, PrintFlow, PrintMe, the PrintMe logo, PrintSmith, PrintSmith Site, PrintStream, Print to Win, Prograph, PSI, PSI Flexo, Radius, Remoteproof, RIPChips, RIP-While-Print, Screenproof, SendMe, Sincolor, Splash, Spot-On, TrackNet, UltraPress, UltraTex, UltraVu, UV Series 50, VisualCal, VUTEK, the VUTEK logo, and WebTools are trademarks of Electronics For Imaging, Inc. and/or its wholly owned subsidiaries in the U.S. and/or certain other countries.

All other terms and product names may be trademarks or registered trademarks of their respective owners, and are hereby acknowledged.