

How-to:

Capture spot colors and reproduce them accurately



How-to: Capture spot colors and reproduce them accurately

Feature overview

With Fiery® Spot-On™, you can achieve the most accurate color matching for logo colors and other spot colors in an automated, application-independent workflow. The feature allows you to manage named colors on the Fiery server, including all PANTONE®, HKS, Toyo and DIC libraries. This feature converts named colors for popular color systems directly on the Fiery server to reproduce the best color match, considering the output color profile parameters. In addition, you can create custom named spot colors.

The optional EFI ES-2000 spectrophotometer adds the ability to capture colors precisely. The EFI ES-2000 provides colorimetric values and automatically enters them in Spot-On.

Objectives

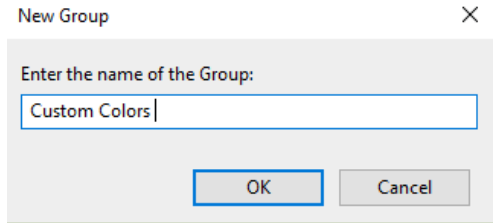
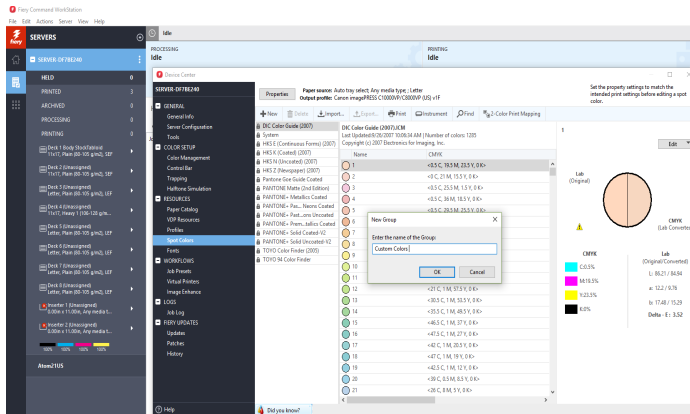
- Create a new spot-color group.
- Create a new spot color using the ES-2000.
- Print a letterhead template using the new spot color.

Additional resources

For additional software downloads, training resources and more, go to [Fiery Online Resources](#).

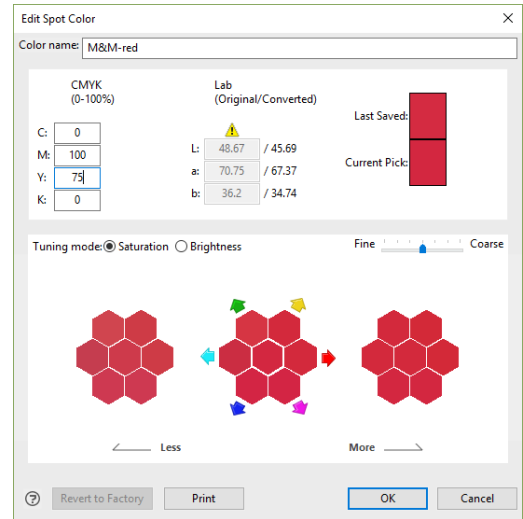
Before you begin

- Open Fiery Command WorkStation® 6 or later and connected to at least one Fiery server running Fiery FS400/FS400 Pro.
- Connect the EFI ES-2000 spectrophotometer to the computer running Command WorkStation.
- Optional: Have EFI Fiery Color Profiler Suite software installed with an activated license on the Command WorkStation computer.
- Have a colored element such as a business card, a fabric with a solid color or packaging.
- Place the sample file, **MnM_letterhead_LTR_SAMPLE.pdf** or **MnM_letterhead_A4_SAMPLE.pdf**, in the Fiery server HELD queue. Drag the file to the Command WorkStation HELD list or use the Command WorkStation Import menu option.
- Ensure the printer and Fiery server have been calibrated before printing any output.



Create a new spot-color group

1. In the Command WorkStation menu, click **Server > Device Center**.
2. Under **RESOURCES** tab, click **Spot Colors**.
3. Click **Properties** and assign the Output Profile. This will be used to create the custom spot color and specify the media associated with the Output Profile for printing color samples.
4. In the Job Properties window, click the **Color** icon.
5. Select the **Output profile** that matches the media loaded in the print engine you are using.
6. Click the **Media** icon. Select the paper catalog or media print options for your workflow.
7. Click **OK** to close Job Properties.
8. Click **+ New > Group**.
9. Enter the name of the Group. For this exercise, type **Custom Colors** and then click **OK**. The new group will be listed in on the left-hand side of the Spot Colors window.
10. Select the new group **Custom Colors**. No colors will be listed in the new group yet. In the next section, you will create a new color to add to this group.

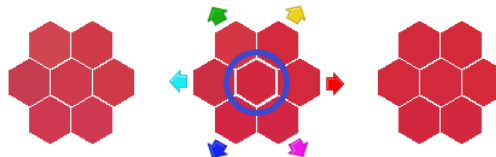


Create the new spot colors using the EFI ES-2000

1. In this exercise, you will use the EFI ES-2000 to import the color values from a red element.
2. Click **Instrument**.
3. The spectrophotometer calibration window will open. Follow the on-screen instructions, placing the EFI ES-2000 in its cradle, and click **Calibrate**.
4. Click **+ New > Spot Color**.
5. Enter a Color name. For this example, type the color name: **M&M-red**.

The spot color name is case sensitive and must be exact for proper printing.

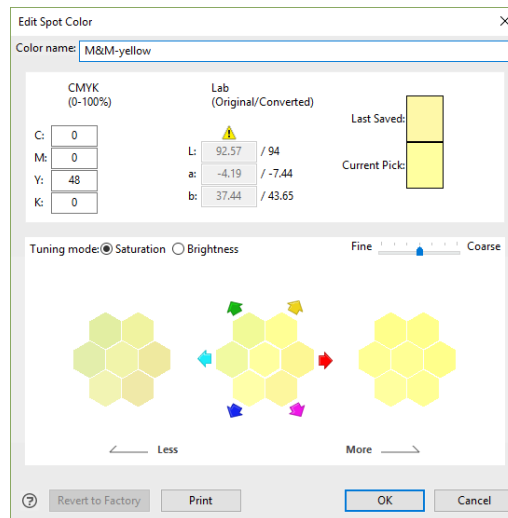
6. Remove the EFI ES-2000 from the calibration cradle and place it on the color to import.
7. Press the button on the side of the EFI ES-2000 to scan the color values.
8. The color will be displayed in the center of color chart. You can refine the color by selecting one of the other color patches.



9. To compare the imported color to the original color of the red card, click **Print** in the New Spot Color window.

*A warning dialog box may appear, informing you that the calibration for the media chosen from the Paper Catalog is outside the specified limits in calibration preferences. Calibration is recommended for consistent results. Click **Print Anyway**.*

10. Compare the red card color with the center square of the printout and select a closer match by clicking on the appropriate square (on screen) and re-printing the target. Very little adjustment is usually necessary.
11. When the desired match is achieved, click **Add Another** to create another spot color.
12. Type the Color name: **M&M-yellow**.
13. Use the same way above to scan the desired yellow color with EFI ES-2000.



14. After compare the imported color to the original color and the desired match is achieved, click OK to close.
15. In the next section you will apply the new spot colors.



Original



New



476 Gloucester Road - 186880000, London, E17 7AF United Kingdom - +44 1452 907060 - www.manorandmason.com

476 Gloucester Road - 186880000, London, E17 7AF United Kingdom - +44 1452 907060 - www.manorandmason.com

Print a letterhead template with the new spot color

1. Select the **MnM_letterhead_LTR_SAMPLE.pdf** or **MnM_letterhead_A4_SAMPLE.pdf** file in the Command WorkStation Held list. Then right-click and select **Print**.
2. The document will now print the letterhead as the new created spot color.



EFI fuels success.

We develop breakthrough technologies for the manufacturing of signage, packaging, textiles, ceramic tiles, and personalized documents, with a wide range of printers, inks, digital front ends, and a comprehensive business and production workflow suite that transforms and streamlines the entire production process, increasing your competitiveness and boosting productivity. Visit www.efi.com or call 650-357-3500 for more information.



Nothing herein should be construed as a warranty in addition to the express warranty statement provided with EFI products and services.

The APPS logo, AutoCal, Auto-Count, Balance, BESTColor, BioVu, BioWare, ColorPASS, Colorproof, ColorWise, Command WorkStation, CopyNet, Cretachrom, Cretaprint, the Cretaprint logo, Cretaprinter, Cretaroller, Digital StoreFront, DirectSmile, DocBuilder, DocBuilder Pro, DockNet, DocStream, DSFdesign Studio, Dynamic Wedge, EDOX, EFI, the EFI logo, Electronics For Imaging, Entrac, EPCount, EPPhoto, EPRegister, EPStatus, Estimate, ExpressPay, FabriVU, Fast-4, Fiery, the Fiery logo, Fiery Driven, the Fiery Driven logo, Fiery JobFlow, Fiery JobMaster, Fiery Link, Fiery Navigator, Fiery Prints, the Fiery Prints logo, Fiery Spark, FreeForm, Hagen, Inkensity, Inkware, LapNet, Logic, Metrix, MicroPress, MiniNet, Monarch, OneFlow, Pace, Pecos, Pecos Vision, PhotoXposure, PressVu, Printcafe, PrinterSite, PrintFlow, PrintMe, the PrintMe logo, PrintSmith, PrintSmith Site, PrintStream, Print to Win, Prograph, PSI, PSI Flexo, Radius, Remoteproof, RIPChips, RIP-While-Print, Screenproof, SendMe, Sincolor, Splash, Spot-On, TrackNet, UltraPress, UltraTex, UltraVu, UV Series 50, VisualCal, VUTEK, the VUTEK logo, and WebTools are trademarks of Electronics For Imaging, Inc. and/or its wholly owned subsidiaries in the U.S. and/or certain other countries.

All other terms and product names may be trademarks or registered trademarks of their respective owners, and are hereby acknowledged.

© 2019 ELECTRONICS FOR IMAGING, INC. ALL RIGHTS RESERVED. | WWW.EFI.COM