

How-to: Produce notepads



How-to: Produce notepads

Feature overview

Pads or notepads have an unlimited number of uses including memo or message pads, forms and personalized notepads as promotional advertising material.

The Fiery® sever can automate the production of printing pads. The Pad Printing feature minimizes manual collation of the printed output and makes it possible to print large and small projects with as many sheets as you wish and as many sizes. From tiny pocket notepads to large desktop calendars, Pad Printing lets you quickly and easily create pads with any number of pages.

Objectives

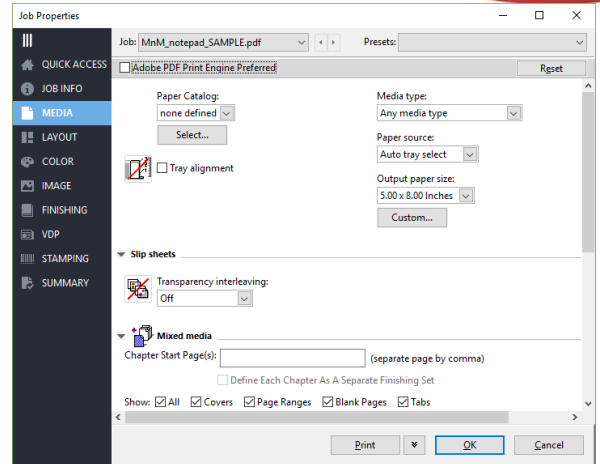
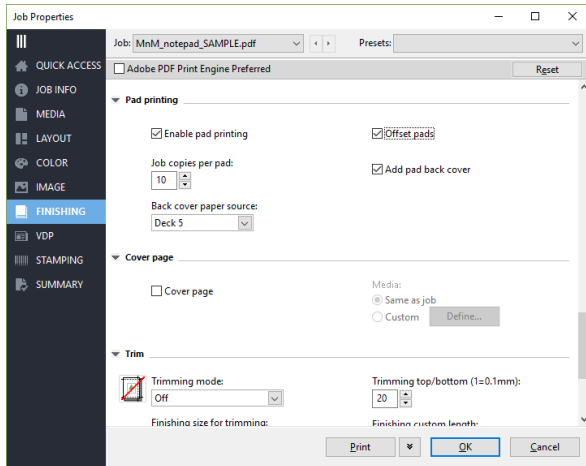
- Produce a notepad using the pad printing workflow

Additional resources

For additional software downloads, training resources and more, go to [Fiery Online Resources](#).

Before you begin

- Open Fiery Command WorkStation® 6.4 or later and connected to at least one Fiery server running Fiery FS400 Pro.
- Place the sample file, **MnM_notepad_SAMPLE.pdf**, in the Fiery server Hold queue. Drag the file to the Command WorkStation Held list or use the Command WorkStation Import menu option.
- Ensure the printer and Fiery server have been calibrated before printing any output.



Pad printing workflow


1. Select the **MnM_notepad_SAMPLE.pdf** file in the Command WorkStation Held list. Then right-click to select **Properties**.
2. In the Job Properties window, click the **Finishing** icon.
3. Scroll down to Pad Printing, and select the **Enable Pad Printing** check box.
4. Enter **10** for Job Copies per pad. The number of copies can be set for 1-999.
5. Select the **Offset pads** check box.
6. Select the **Add pad back cover** check box.

The Add pad back cover option is not available on all printers. When you do use this option, you can also use the Back cover paper source option to specify cover media.

7. If your printer supports the Add back cover option, select the **Back Cover Paper Source** tray.
8. Click the **Media** icon and select the appropriate media options for your workflow.
9. Click **Print**.

EFI fuels success.

We develop breakthrough technologies for the manufacturing of signage, packaging, textiles, ceramic tiles, and personalized documents, with a wide range of printers, inks, digital front ends, and a comprehensive business and production workflow suite that transforms and streamlines the entire production process, increasing your competitiveness and boosting productivity. Visit www.efi.com or call 650-357-3500 for more information.



Nothing herein should be construed as a warranty in addition to the express warranty statement provided with EFI products and services.

The APPS logo, AutoCal, Auto-Count, Balance, BESTColor, BioVu, BioWare, ColorPASS, Colorproof, ColorWise, Command WorkStation, CopyNet, Cretachrom, Cretaprint, the Cretaprint logo, Cretaprinter, Cretaroller, Digital StoreFront, DirectSmile, DocBuilder, DocBuilder Pro, DockNet, DocStream, DSFdesign Studio, Dynamic Wedge, EDOX, EFI, the EFI logo, Electronics For Imaging, Entrac, EPCount, EPPhoto, EPRegister, EPStatus, Estimate, ExpressPay, FabrIVU, Fast-4, Fiery, the Fiery logo, Fiery Driven, the Fiery Driven logo, Fiery JobFlow, Fiery JobMaster, Fiery Link, Fiery Navigator, Fiery Prints, the Fiery Prints logo, Fiery Spark, FreeForm, Hagen, Inktenzity, Inkware, LapNet, Logic, Metrix, MicroPress, MiniNet, Monarch, OneFlow, Pace, Pecas, Pecas Vision, PhotoXposure, PressVu, Printcafe, PrinterSite, PrintFlow, PrintMe, the PrintMe logo, PrintSmith, PrintSmith Site, PrintStream, Print to Win, Prograph, PSI, PSI Flexo, Radius, Remoteproof, RIPChips, RIP-While-Print, Screenproof, SendMe, Sincolor, Splash, Spot-On, TrackNet, UltraPress, UltraTex, UltraVu, UV Series 50, VisualCal, VUTEK, the VUTEK logo, and WebTools are trademarks of Electronics For Imaging, Inc. and/or its wholly owned subsidiaries in the U.S. and/or certain other countries.

All other terms and product names may be trademarks or registered trademarks of their respective owners, and are hereby acknowledged.