

## How-to:

Print jobs correctly once  
with Fiery JobExpert



# How-to: Print jobs correctly once with Fiery JobExpert

## Feature overview

Fiery JobExpert is a breakthrough new technology that analyzes incoming PDF files and dynamically chooses the optimal print settings to achieve the highest quality, while optimizing production time.

To accomplish this, Fiery JobExpert will:

- Analyze each PDF print job in detail
- Automatically set the optimal Fiery job settings
- Process each job to efficiently achieve the best possible print quality

JobExpert serves as built-in expert that delivers:

- Highest print quality
- Faster processing
- Enables less-experienced operators to run jobs correctly
- Reduces setup time
- Cuts waste
- And can be undone if needed

## Objectives

- Import a document using Fiery JobExpert in Fiery Command WorkStation®
- Check the automatic corrections done by JobExpert
- Apply Fiery JobExpert to a job already imported in the Held queue
- Clear Fiery JobExpert settings applied to a job
- Preview Fiery JobExpert Report applied to a job

## Additional resources

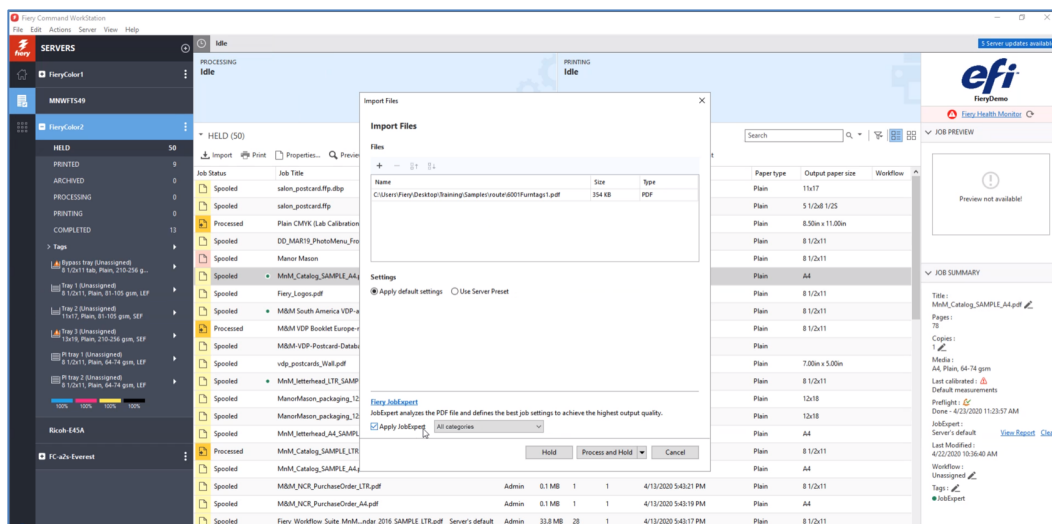
For additional software downloads, training resources, and more, go to [Fiery Online Resources](#).

## Before you begin

- Open Fiery Command WorkStation 6.4 or later and connect to a Fiery external server running Fiery FS400 Pro\*.
- Have a copy of the files on your desktop: **efi\_fiery\_MnM\_booklet\_jobexpert\_A4.pdf** or **efi\_fiery\_MnM\_booklet\_jobexpert\_LTR.pdf**
- Ensure that the printer and Fiery server have been calibrated before printing any output.

\* Some exceptions apply. Please check feature availability with your Fiery reseller.

## How-to: Print jobs correctly once with Fiery JobExpert

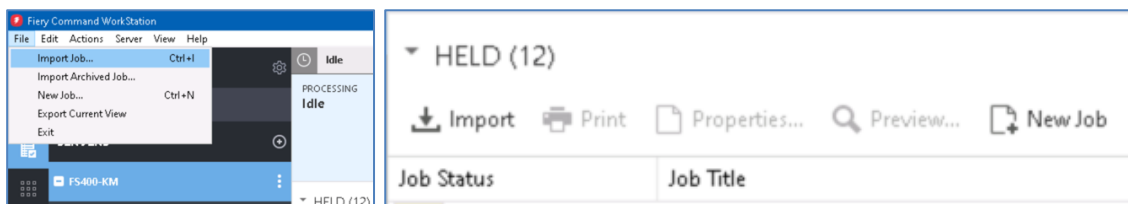


## Import a document using Fiery JobExpert in Fiery Command WorkStation

In this section you will import a PDF file to Fiery Command WorkStation, apply JobExpert to it, and then import the same file without JobExpert applied for later comparison.

For the first PDF file, JobExpert will choose the optimal Job Properties settings based on the content of the job.

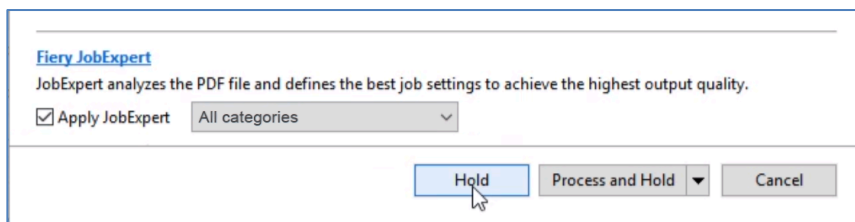
1. To begin, import the **efi\_fiery\_MnM\_booklet\_jobexpert\_LTR.pdf** or **efi\_fiery\_MnM\_booklet\_jobexpert\_A4.pdf** file to the Fiery server using Command WorkStation. Select the **File** menu and then choose the **Import job...** option. Alternatively, you can use the **Import** toolbar icon located in Job Center.



**Note:** Depending on the media stock size that you have available on your Fiery server trays, you can select the A4 version of this file, the JobExpert results will be the same.

2. On the new **Select Files to Import** window select the PDF file located on your Desktop and then click **Open** to add.
3. A new window called **Import Files** will appear showing the PDF's file name, size, and type.

- Click on the **Apply JobExpert** checkbox located in the lower-left corner of this window.



- After clicking on the checkbox, a drop-down list selection will be activated. For this example, leave the '**All categories**' option selected. JobExpert will choose the best Job Properties settings based on the content of the job.

**Note:** When the **All categories** option is selected, Fiery JobExpert automatically sets the correct print settings for color management, image quality, variable data, and some engine-specific properties.

When **Color Management** is selected, JobExpert will choose the best color settings based on the content of the job.

After the job is analyzed by JobExpert, you can check the applied settings by opening the Color tab in Job Properties. If needed, JobExpert will also enable Adobe PDF Print Engine (APPE) in the job.

Using the **Image Quality** option, JobExpert will choose the best image quality settings based on the content of the job.

After the job is analyzed by JobExpert, you can check the applied settings by opening the Image tab in Job Properties.

When **VDP** option is selected, JobExpert will choose the best settings in Job Properties for PDF jobs that contain variable data. If PDF/X objects are detected in the job, JobExpert will also enable APPE.

- Then, select **Process and Hold** job action, and JobExpert will automatically apply the recommended settings to that job.

Now, you will import the same file one more time, but you will not use Fiery JobExpert.

- Select the **File** menu and then choose **Import job...** option. Locate the PDF file **efi\_fiery\_MnM\_booklet\_jobexpert.pdf** on your Desktop and select it.
- In the new **Select Files to Import** window, click **Open** to add.
- A new window called **Import Files** will appear, don't change any of the settings and click the **Process and Hold** button.

Look at the Held queue, you will see the PDF file **efi\_fiery\_MnM\_booklet\_jobexpert.pdf** listed two times.

Import            Print            Properties...            Preview...            New Job            Delete            Calibrate...            Spot Pro            Logs							
Job Status	Job Title	User	Size	Pages	Copies	Date/Time	
	efi_fiery_MnM_booklet_jobexpert_LTR_hg.pdf	Admin	67.0 MB	4	1	Today 5:15:42 PM	
	efi_fiery_MnM_booklet_jobexpert_LTR_hg.pdf	Admin	219.3 MB	4	1	Today 5:13:27 PM	



## Check the automatic corrections done by JobExpert

In this section, you will see how JobExpert settings can be applied to PDF files imported into Fiery Command WorkStation.

EFI has developed extensive checks to detect embedded ICC profiles, transparency issues, small texts and ultra-thin lines.

To check some of these settings and corrections, you can use Preview in Fiery Command WorkStation, however some corrections can only be checked on a printed document.

Using the Preview option, you can visually check if an embedded ICC profile was correctly honored using JobExpert on a Fiery server.

JobExpert will detect profiles in incoming PDF files whether they are RGB, CMYK, gray — or even when there is an embedded output intent profile. Let's see how to check that.

1. Locate the latest imported PDF file **efi\_fiery\_MnM\_booklet\_jobexpert.pdf** that was proceed without Fiery JobExpert in the Held queue.
2. Do a right-click on it.
3. From the context menu, select the **Preview...** option.
4. At the bottom of the first page, you can see two pictures. The one at the right of the page has a custom CMYK ICC embedded profile that was not processed properly. You can visually see that the image has a magenta cast.



Image processed without JobExpert.

Now, compare the same PDF that processed using Fiery JobExpert.

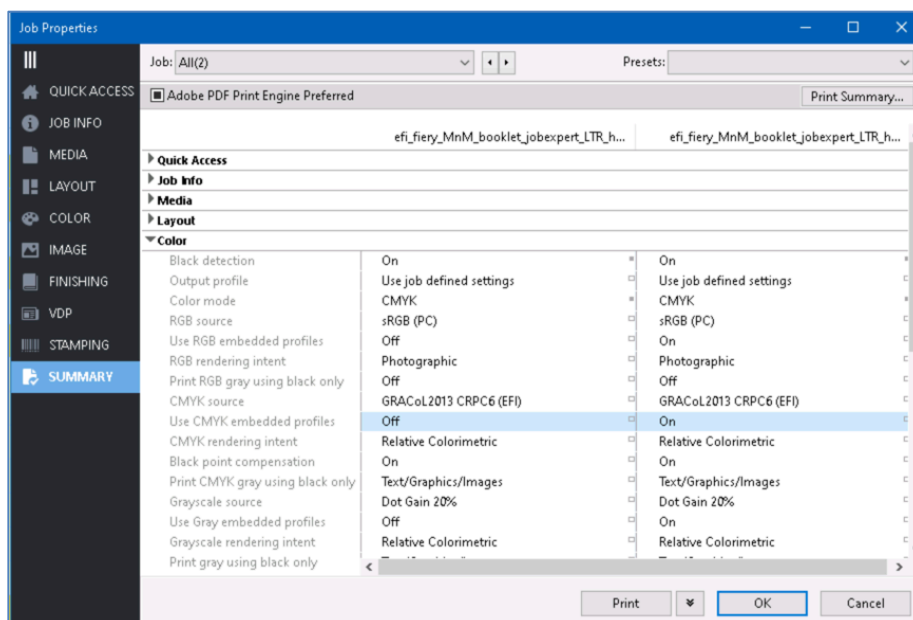
1. Locate the first imported PDF file **efi\_fiery\_MnM\_booklet\_jobexpert.pdf** that was proceed using Fiery JobExpert in the Held queue.
2. Right-click on the PDF.
3. From the context menu, select the **Preview...** option.
4. Take a look at the two pictures at the bottom of the first page again. The image on the right has a custom CMYK ICC embedded profile. Now with JobExpert applied, the image was processed correctly with the embedded ICC profile and there isn't a magenta color cast.



Image processed with JobExpert applied.

To compare which settings were used for each job, we can compare the job properties for these two examples.

1. Select the two jobs **efi\_fiery\_MnM\_booklet\_jobexpert.pdf** in the Held queue that were used in the previous examples.
2. Right-click on one of them.
3. Select the **Properties** option from the context menu.
4. Then click on the Summary tab.
5. In the Color section you can check all the settings that were configured based on the PDF content. Please check that the setting 'Use CMYK embedded profiles' are set to 'Off' and 'On' for each processed PDF.



Fiery JobExpert can also correct several other settings including:

Color Spaces and Spot Colors



Without JobExpert



With JobExpert



Without JobExpert



With JobExpert

Transparencies



Without JobExpert



With JobExpert

Small texts



Without JobExpert



With JobExpert

Ultra thin-lines

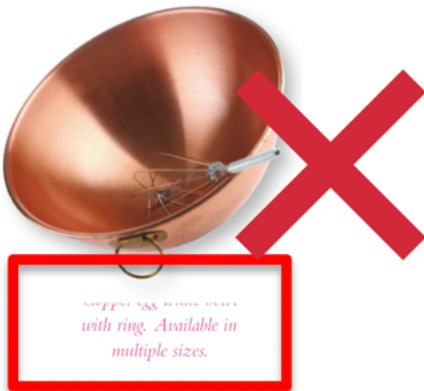


Without JobExpert

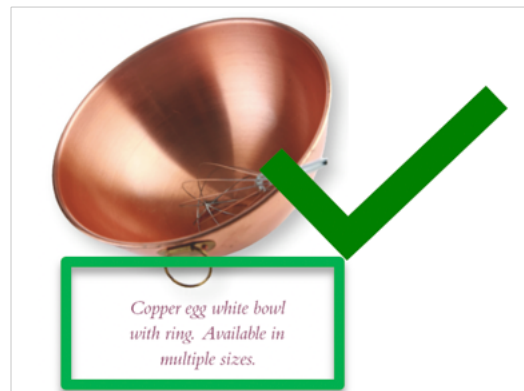


With JobExpert

APPE to ensure correct output.



Without JobExpert



With JobExpert

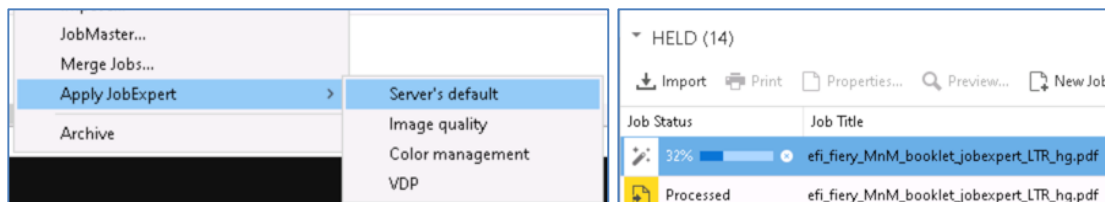
## Apply Fiery JobExpert to a job already imported on Held queue

In this section, you will see how to apply JobExpert settings to a PDF file that was already imported, without using the Fiery JobExpert feature.

1. Locate the job you want to apply JobExpert in the Held queue.
2. Right-click on the job name.
3. From the context menu, choose **Apply JobExpert** option.
4. Choose **Server's default** from the pre-defined settings available.

## How-to: Print jobs correctly once with Fiery JobExpert

Fiery Command WorkStation will automatically apply the JobExpert on the selected PDF file, showing a progress bar on the Job Status column in the Held queue.



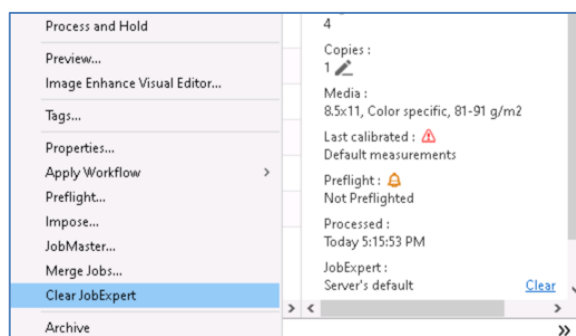
**Note:** You can only apply Fiery JobExpert on any job that was not processed yet. So, it's necessary to remove the raster data from a processed job before applying JobExpert. Select the processed job file in the queue, right-click on it and select the **Remove Raster** option from the context menu.

## Clear Fiery JobExpert applied to a job

If you need to undo the JobExpert settings for any job, you can remove this feature with just one click.

1. Locate and select the job you want to remove the JobExpert functionality from the Held queue.
2. Right-click on the job name.
3. From the context menu choose **Clear JobExpert** option.

Fiery Command WorkStation will automatically revert to the previous settings on the selected PDF file in the Held queue.



Alternatively, you can also clear the JobExpert setting using the Summary Panel.

1. Locate and select the job you want to remove JobExpert in the Held queue.
2. From the Summary Panel area, click on the **Clear** link.

Fiery Command WorkStation will automatically clear the JobExpert settings on the selected PDF file in the Held queue and assign the default settings.

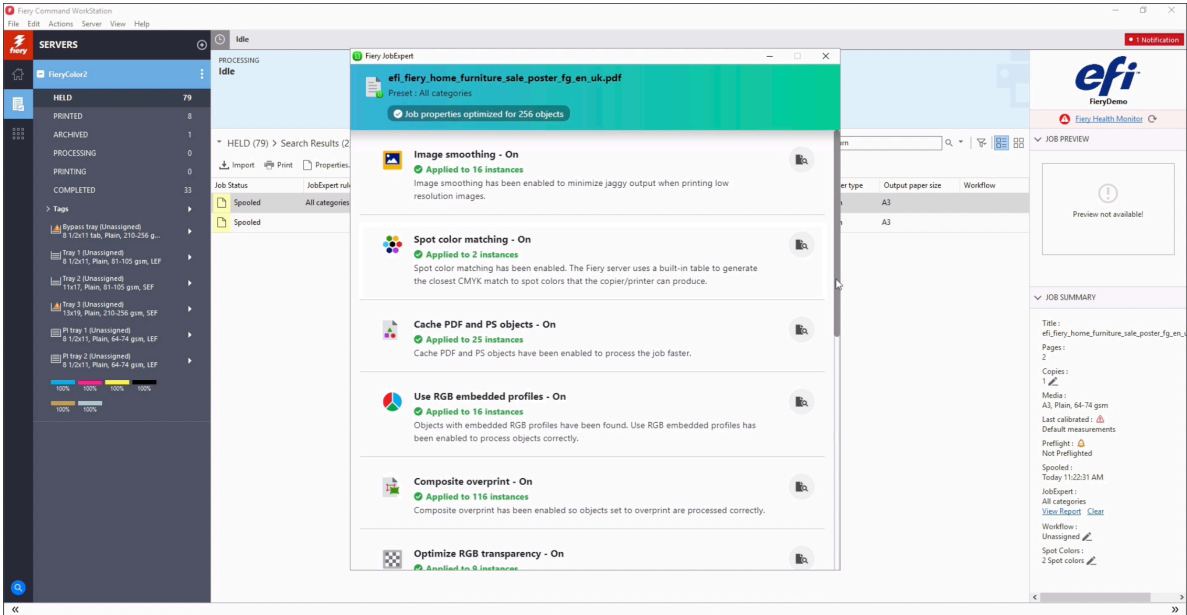
**Note:** You can only clear Fiery JobExpert on a job that is not processed. Therefore it's necessary to remove the raster data from a processed job. Select the processed job file in the queue, right-click on it and select the **Remove Raster** option from the context menu.



## Preview Fiery JobExpert Report applied to a job

After applying JobExpert to a job, you can use the JobExpert Report to see a summary and explanation of the settings optimized for the job. Plus you can use the preview functionality to visualize the elements that require specific settings to be enabled.

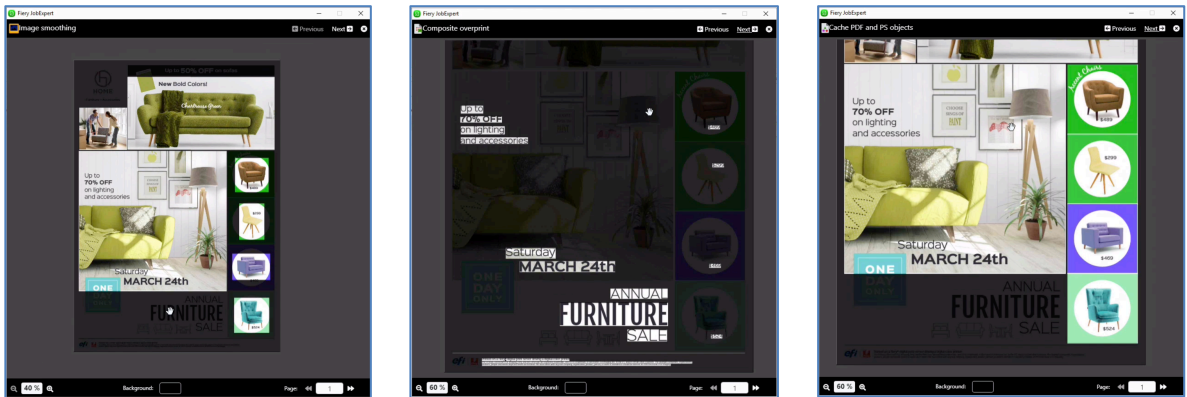
There are two ways to access the JobExpert Report. The first is to right-click the job's name in the job queue and choose the View Report from the context menu. The second is to click on the View Report link under the JobExpert information in the Job Summary area.



Once the report is open, you can see which preset was used and the total number of instances that were optimized by JobExpert.

Also, you can view the explanation about each setting applied and how many times it was used.

If you click on a setting that was enabled, a new window will pop up to show you the elements that required the setting to change within the document. You can cycle through the settings preview by clicking on the Previous or Next buttons, selecting a different zoom factor, and also changing the background color to assist in viewing the elements that were affected in the document.



## EFI fuels success.

We develop breakthrough technologies for the manufacturing of signage, packaging, textiles, ceramic tiles, and personalized documents, with a wide range of printers, inks, digital front ends, and a comprehensive business and production workflow suite that transforms and streamlines the entire production process, increasing your competitiveness and boosting productivity. Visit [www.efi.com](http://www.efi.com) or call 650-357-3500 for more information.



Nothing herein should be construed as a warranty in addition to the express warranty statement provided with EFI products and services. The APPS logo, AutoCal, Auto-Count, Balance, BESTColor, BioVu, BioWare, ColorPASS, Colorproof, ColorWise, Command WorkStation, CopyNet, Cretachrom, Cretaprint, the Cretaprint logo, Cretaprinter, Cretaroller, Digital StoreFront, DirectSmile, DocBuilder, DocBuilder Pro, DockNet, DocStream, DSPdesign Studio, Dynamic Wedge, EDOX, EFI, the EFI logo, Electronics For Imaging, Entrac, EPCount, EPPhoto, EPRegister, EPStatus, Estimate, ExpressPay, FabriVU, Fast-4, Fiery, the Fiery logo, Fiery Driven, the Fiery Driven logo, Fiery JobFlow, Fiery JobMaster, Fiery Link, Fiery Navigator, Fiery Prints, the Fiery Prints logo, Fiery Spark, FreeForm, Hagen, Inkintensity, Inkware, LapNet, Logic, Metrix, MicroPress, MiniNet, Monarch, OneFlow, Pace, Pecas, Pecas Vision, PhotoXposure, PressVu, Printcafe, PrinterSite, PrintFlow, PrintMe, the PrintMe logo, PrintSmith, PrintSmith Site, PrintStream, Print to Win, Prograph, PSI, PSI Flexo, Radius, Remoteproof, RIPChips, RIP-While-Print, Screenproof, SendMe, Sincrolor, Splash, Spot-On, TrackNet, UltraPress, UltraTex, UltraVu, UV Series 50, VisualCal, VUTEk, the VUTEk logo, and WebTools are trademarks of Electronics For Imaging, Inc. and/or its wholly owned subsidiaries in the U.S. and/or certain other countries. All other terms and product names may be trademarks or registered trademarks of their respective owners, and are hereby acknowledged.