

How-to: One-time setup configuration for Duplo DC-618 finisher integration with Fiery Impose





Feature overview

Fiery® Impose is the most intuitive PDF-based sheet imposition software on the market. Tight integration with Fiery Command WorkStation®, makeready software, and prepress tools helps automate print job submission.

Fiery Impose templates allow users to save the most common job layouts to automate the imposition process. Templates can also include barcodes and registration marks. These are recognized by the barcode scanner in Duplo finishing equipment using the * JobID * format.

The barcodes and registration marks instruct the Duplo finisher on how to position blades, cutters, and creasers to finish the document.

Integrating Fiery Impose with Duplo finishers brings dramatic productivity gains to job preparation and finishing by automating the process. This saves time plus minimizes waste and errors.

This how-to provides a simplified one-time setup integration between Fiery Impose and the Duplo DC-618 Slitter/Cutter/Creaser.

This feature is compatible with the Duplo DC-618 Slitter/Cutter/Creaser nearline finisher.

Objectives

- Configuration on the Duplo PC Controller.
 - Folder and permissions configuraton for finishing integration on Windows.
 - Configuration on the Duplo PC Controller application.
- Configuration on the Fiery Command WorkStation application.
 - Section A – Fiery Command WorkStation version 6.8.0.406 and later
 - Section B – Fiery Command WorkStation version 6.6.0.456 to 6.8.0.366

Additional resources

This configuration must be done before using the How-To Guide: **Automate offline finishing with Duplo finishers - Part 3**.

For additional software downloads, training resources, and more, go to [Fiery Online Resources](#).

Before you begin

- Open **Fiery Command WorkStation 6.6.0.456** or later and connect to at least one Fiery server running **Fiery FS150 or newer**.
 - Check the Fiery Server system version on **General Info** of the **Device Center** area.
 - Check the current Fiery Command WorkStation version using the **Fiery Software Manager**.
- **NOTE:** If your Fiery Impose is enabled using an OLD Fiery Impose USB security dongle (not sold by EFI since 2012), that Fiery Impose Dongle will NOT work with Command Workstation v6.6. You must upgrade/replace your Fiery USB Impose dongle.

- Have the **Duplo DC-618 PC Controller** installed and configured in the same network that the Fiery Server is connected. Note: You may need to disable or configure your network firewall settings to access the Controller.
- Use the Duplo DC-618 PC Controller (1.05) or later. Verify the version on the top header of the Controller Software.
- Verify the current Main and Panel PCB versions on the main unit:
 - Main PCB 1.05 or later
 - Panel PCB 1.05 or later
- Ensure that the printer and Fiery server have been calibrated before printing any output.
- Ensure the font and back side alignment is achieved for test printouts based on your printer specification.

On the Duplo PC Controller Windows computer

Folders and permissions configuration for finishing integration on Windows.

Create a new folder on **C: drive** for '**Duplo DC618 XML_Import.**'

Create a new folder on **C: drive** for '**Duplo DC618 XML_Export.**'

	Duplo DC618 XML_Import	4/21/2021 3:06 PM	File folder
	Duplo DC618 XML_Export	4/21/2021 3:06 PM	File folder

Important Note: You must create two separate folders. One for the **Import** and one for the **Export** files on your C: drive. Don't just use a single folder to manage these files.

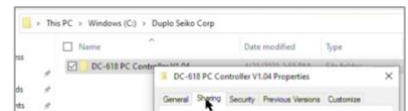
Share the '**...Import**' folder for '**everyone**' user and change the permission to '**Read/Write.**'

Share the '**...Export**' folder for '**everyone**' user and change the permission to '**Read/Write.**'

Locate the folder 'Duplo Seiko Corp' on C: drive.



Locate the folder 'DC-618 Controller V1.05.'



Share it with '**everyone**' user and change permission to '**Read/Write.**'



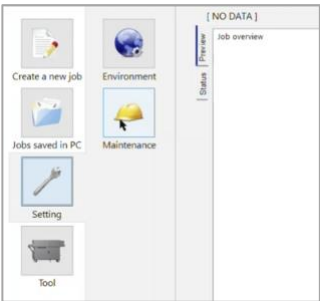
Open the **Duplo-DC 618 PC Controller** application.

Select the **'Setting'** icon.

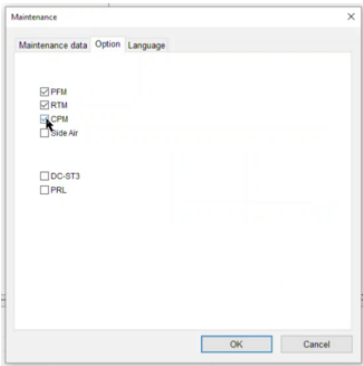
Select the **'Maintenance'** icon.

Enter the password 630304 and click on the **'Yes'** button.

In the Maintenance window switch to the **'Option'** tab.



Select the checkbox options for: **'PFM,' 'RTM'** and **'CPM.'** Press OK to confirm.

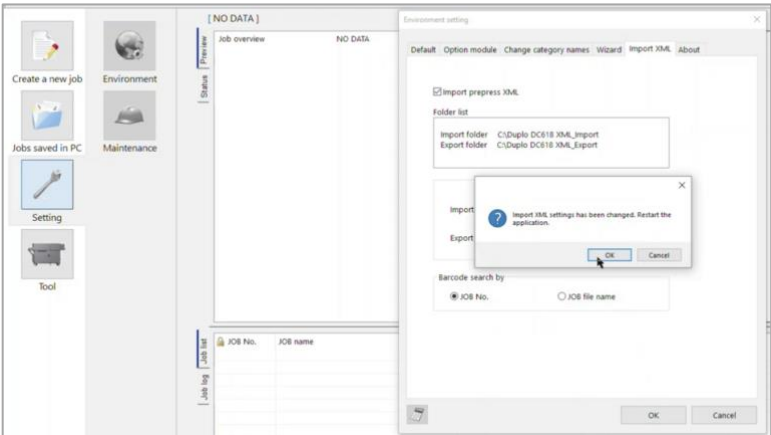


PFM: Manual Perforation Module performs continuous perforations along the length of the sheet. Ideal for coupon and ticket applications.

RTM: Rotary Tool Module performs perforations, micro-perforations, and scores along the length of the sheet. Tools are positioned automatically and can perform strike perforations.

CPM: Cross Perforation Module performs perforations and micro-perforations along the width of the sheet. Tools are positioned

Select the **'Environment'** icon in the **'Setting'** area.



In the **Environment** window change to the '**Import XML**' tab.

Then select the '**Import Prepress XML**' checkbox option.

And click on the '**Select folder**' button for the '**Import folder**' option.

Locate the folder '**Duplo DC618 XML_Import**' on the **C: drive** and click '**OK**' to confirm.

Do the same for the **Export folder** option, select the '**Export folder**' button.

Locate the folder '**Duplo DC618 XML_Export**' on the **C: drive** and click '**OK**' to confirm.

Then click on the '**OK**' button to **exit** the Environment window.

A new message window will appear asking to confirm that the XML settings have been changed and the application needs to Restart.

Click on the '**OK**' button to confirm.

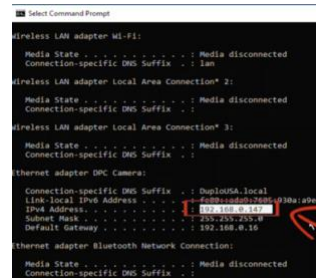
How to find out the Finisher Controller IP number on Windows.

Open the Windows
'**Command**' tool using the
'**Search**' function.

Type '**ipconfig**' and hit the
'**Enter**' key.

Write down the **IPv4 address**,
for instance: 192.168.0.147

Exit closing the '**Command**'
window.



```
Select Command Prompt
Wireless LAN adapter Wi-Fi:
  Media State . . . . . : Media disconnected
  Connection-specific DNS Suffix . : lan
Wireless LAN adapter Local Area Connection* 2:
  Media State . . . . . : Media disconnected
  Connection-specific DNS Suffix . : 
Wireless LAN adapter Local Area Connection* 3:
  Media State . . . . . : Media disconnected
  Connection-specific DNS Suffix . : 
Ethernet adapter DMC Camera:
  Connection-specific DNS Suffix . : DuploUSA.local
  Link-local IPv6 Address . . . . : fe80::4240:8240:8240:8240%4
  IPv4 Address. . . . . : 192.168.0.147
  Subnet Mask . . . . . : 255.255.255.0
  Default Gateway . . . . . : 192.168.0.10
Ethernet adapter Bluetooth Network Connection:
  Media State . . . . . : Media disconnected
  Connection-specific DNS Suffix . :
```

Note: Make a note of the Subnet Mask and Default Gateway on the Duplo PC Controller. These settings should be the same on the Fiery controller. Perform a Test Ping between them.



On the Fiery Command WorkStation application

IMPORTANT NOTE: If you have the **Fiery Command WorkStation version 6.8.0.406** or later with the **Fiery Impose version 6.3.23**, configure the Fiery Impose preferences using **Section A**.

If you have **Fiery Command WorkStation version 6.6.0.456** to **6.8.0.366**, please configure the Fiery Impose preferences using **Section B**.

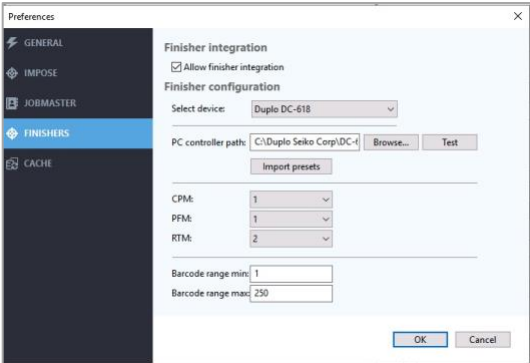
Note: Before working with jobs, you need to decide whether to program in MM or INCHES. As of the release of Command WorkStation v6.6 the Duplo Template Creation features in Fiery Impose require the global Command WorkStation setting for MM or Inches to be set under the PREFERENCES of Command WorkStation. (CWS > Edit > Preferences > Region > Measurement units).

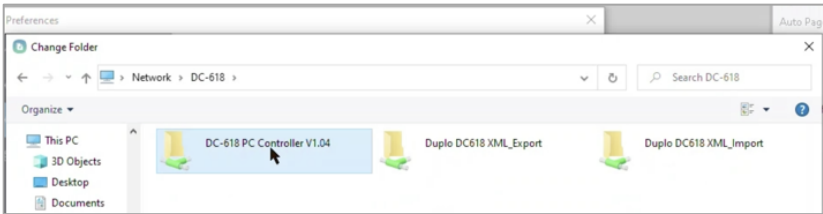
Section A – Fiery Command WorkStation version 6.8.0.406 and later

Right click on any job on the ‘Held’ queue and select the ‘**Impose**’ option from the context menu.

In the **Fiery Impose** window:

- Select the ‘**Edit**’ menu.
- And then select the ‘**Preferences...**’ option.
- Choose the ‘**Finishers**’ tab from the left.
- Select the ‘Allow finisher integration’ checkbox.
- Click on the ‘**Select devices**’ drop-down menu and select ‘**Duplo DC-618**’ from the list.
- Click on the ‘**Browse...**’ button near to the ‘**PC Controller Path:**’ field and locate the Duplo DC-618 PC Controller shared folder in your computer.

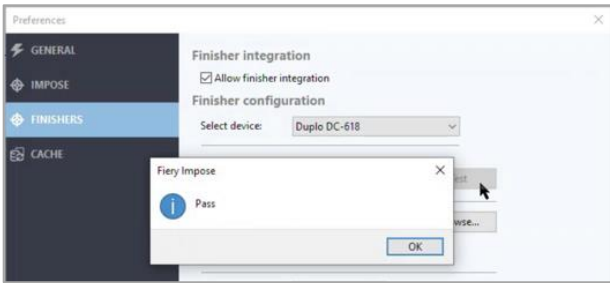




Click on the **'Select Folder'** to confirm and exit the window.

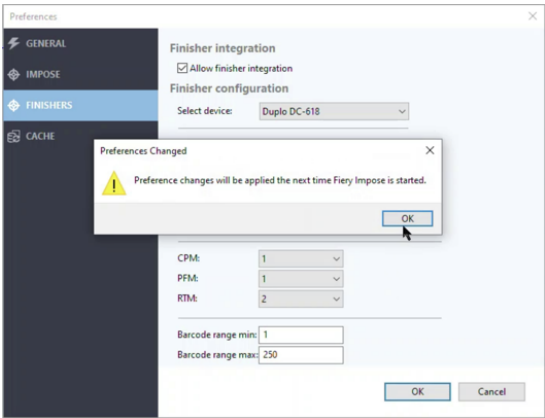
Fiery Impose will test the folder and if it is correct you should see a window saying **'Pass'**, and click on the **'OK'** button to finish.

If the **Pass** window is not displayed, click on the **'Test'** button to test the connection between them.



You should see a window saying **'Pass'** if the connection is correct, and click the **'OK'** button to finish.

A new message window shows **'Preferences changes will be applied the next time that Fiery Impose is started.'** Click on the **'OK'** button to confirm.



Then **close** the Fiery Impose window.

Section B – Fiery Command WorkStation version 6.6.0.456 to 6.8.0.366

Right click on any job on the '**Held**' queue and select the '**Impose**' option from the context menu.

In the **Fiery Impose** window:

Select the '**Edit**' menu.

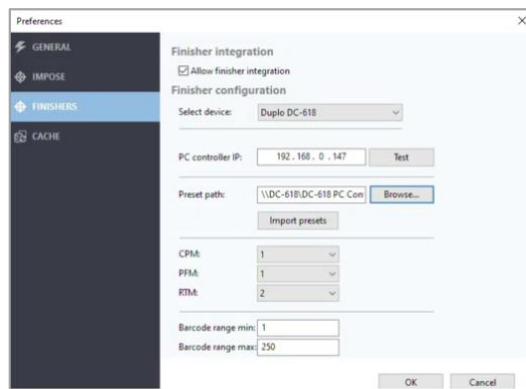
Select the '**Preferences...**' option.

Choose the '**Finishers**' tab from the left.

Select the 'Allow finisher integration' checkbox.

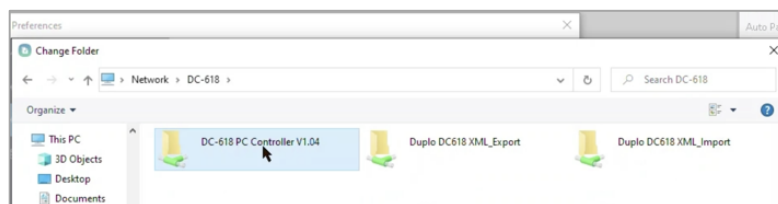
Click on the '**Select device**' drop-down menu and select the '**Duplo DC-618**' from the list.

On the '**PC Controller IP:**' enter the **IPv4 address** for the Duplo DC-618 PC Controller Computer.

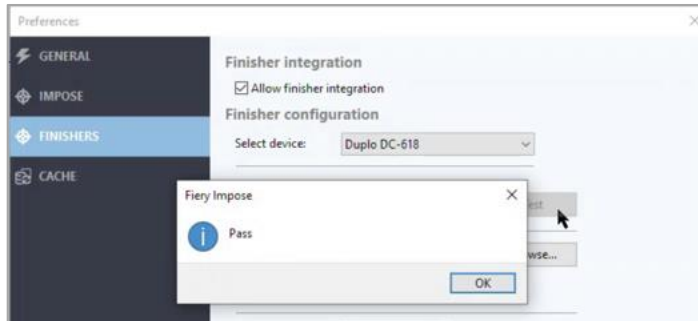


On the '**Preset path:**' area, click on the '**Browse...**' button and locate the '**DC-618 PC Controller V1.04**' shared folder in your network.

Then click on the '**Select Folder**' to confirm and exit the window.



Now, click on the **'Test'** button located on the PC Controller IP area to test the connection between them.



You should see a window saying **'Pass'** if the connection is correct and click on the **'OK'** button to finish.

IMPORTANT NOTE: If you receive a **'Fail'** message, you need to verify a few things.

First, check if you can Ping the IP address of the Duplo PC Controller, using the Windows Command prompt. <Command Prompt (CMD). – PING ipaddress>

Second, check the Firewall settings on the Duplo PC Controller, any switch between the Fiery and the Duplo PC and/or the Firewall settings on the Fiery server.

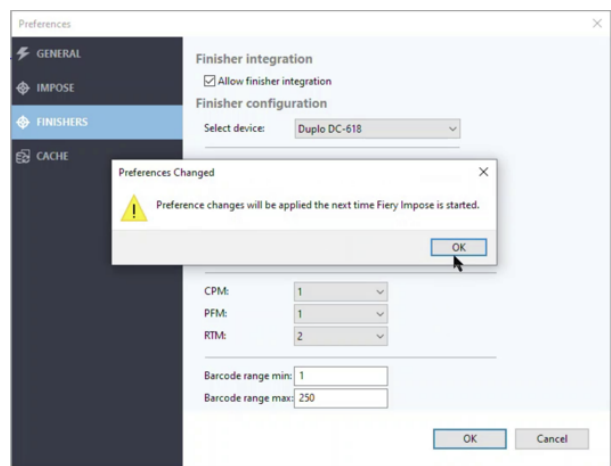
Also, check if your login credential on this computer can access the shared folders on the computer where the Duplo Controller is installed. You can check the Preset path with a File Explorer.

In the File Explorer's search field type '\\,' and then, type the Duplo Controller IP address instead of the UNC path location. For instance: \\192.168.0.147, and hit the Enter key to confirm.

A new Windows Security popup may appear requesting the network domain credentials. Enter the user and password and click 'OK' to confirm.

Return to Fiery Impose's preference window and click the 'Test' button again. You should receive the 'Pass' confirmation message.

A new message window shows 'Preferences changes will be applied the next time that the Fiery Impose is started.' Click on the **'OK'** button to confirm.



And then **close** the Fiery Impose window.

Note: If you are using a virtual Fiery for demo purpose, the **Duplo PC Controller** can be installed on the same virtual Fiery. Use **127.0.0.1** as IP address for the PC controller machine. A pop-up window message may display when opening Fiery Impose: “**Finisher is off-line.**” This is because the Fiery server is not physically connected to a real finisher controller equipment. Just click ‘**OK**’ to continue.

On the Duplo DC-618 Control Panel

Make sure that both 2 Digit Barcode and 3 Digit Barcode are enabled on the DC-618 unit.

- On DC-618 Main Unit "Service Mode" under "H98 Special" and verify 2 Digit Barcode "1" and 3 Digit Barcode "1" are enabled. By default, 2 Digit Barcode is enabled.





For more information, please visit fiery.com.

Nothing herein should be construed as a warranty in addition to the express warranty statement provided with Fiery, LLC products and services.

ColorGuard, ColorRight, Command WorkStation, ColorWise, Fiery, the Fiery logo, Fiery Compose, Fiery Driven, the Fiery Driven logo, Fiery Edge, Fiery Essential, Fiery HyperRIP, Fiery Impose, Fiery Impress, Fiery ImageViewer, Fiery Intensify, Fiery JobExpert, Fiery JobFlow, Fiery JobMaster, Fiery Prep-it, Fiery Prints, the Fiery Prints logo, Fiery TrueBrand, FreeForm, MicroPress, IQ, PrintMe, RIPChips, RIP-While-Print, Spot-On, Spot Pro, and WebTools are trademarks or registered trademarks of Fiery, LLC and/or its wholly owned subsidiaries in the U.S. and/or certain other countries. All other terms and product names may be trademarks or registered trademarks of their respective owners and are hereby acknowledged.

© 2023 FIERY, LLC. ALL RIGHTS RESERVED.