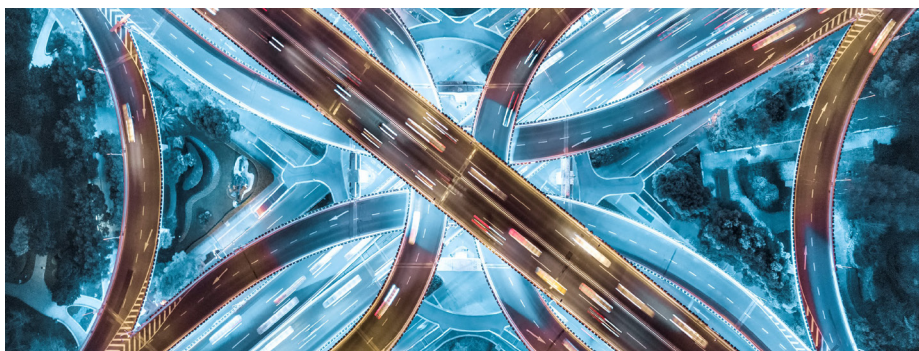


# Xerox® EX-P 6 Print Server Powered by Fiery®

XEROX® IRIDESSE®  
PRODUCTION PRESS



Easily handle high-volume production. The powerful Xerox® EX-P 6 Print Server driving the Xerox® Iridesse® Production Press features HyperRIP, the innovative Fiery feature that processes large and complex jobs at faster speed, which allows you to take on new, higher-value opportunities with confidence.



## ACHIEVE OUTSTANDING COLOUR ACCURACY

Get the best out-of-the-box colour consistency and accuracy with Fiery colour management tools. Fiery Colour Profiler Suite allows you to calibrate your Iridesse Production Press to G7®, ensuring colour accuracy throughout print runs and across multiple printers.

The integrated Fiery Smart Estimator allows you to estimate your dry ink usage per job, including Speciality Dry Inks, before printing a single page.

## BE BRILLIANT WITH SPECIALITY COLOUR

Unleash more “wow” per page when you can utilise up to two Speciality Dry Ink stations simultaneously. Combine HD EA Gold, Silver, White, Clear, Media Expansion Low Gloss Clear or Fluorescent Pink Dry Inks to create dazzling metallic effects, stunning white design expressions on transparent or coloured stocks, and jaw-dropping tactile embellishments. Standard features such as Fiery ImageViewer and Fiery Spot Pro make working with Speciality Dry Inks easy and intuitive.

## MAXIMISE WORKFLOW EFFICIENCY AND PRODUCTIVITY

Reduce setup time and cut waste with Fiery JobExpert™ – a built-in feature in Fiery Command WorkStation® that automatically analyses incoming PDF files and dynamically chooses optimal Fiery print settings.

Fiery Impose-Compose offers intuitive, visual document preparation. Easily customise imposition templates to automate common layouts. You can even integrate with offline finishers to automate processes from prepress to finishing, reducing job setup time by up to 70%.

## TURN UP THE IMPACT WITH PERSONALISATION

With the included Fiery FreeForm™ Create application, it's quick and easy to personalise existing files – with no additional VDP software required. Add variable elements such as text, images or barcodes with just a few clicks. You can even create personalised files that include two different Speciality Dry Inks for extra visual impact.

## KEEP PRODUCTION RUNNING PROFITABLY

Every minute counts in production. New features help maximise uptime and keep your Fiery server healthy, so your Fiery Driven™ Iridesse Production Press keeps running profitably with minimal downtime.

Powered by



xerox™

# Specifications for the Xerox® EX-P 6 Print Server

**XEROX® IRIDESSE®  
PRODUCTION PRESS**

## HARDWARE/PLATFORM

- Fiery® FS400 Pro software
- Intel® Xeon® Dual 12 Core Processor
- (8) x 4 GB DIMMS and (2) x 2 TB hard disk drive, (1) 500 GB hard disk drive
- DVD R/W
- Calibration/profiling: EFI™ ES-3000 Spectrophotometer or Full Width Array
- Fiery NX Station GL
- Fiery QuickTouch™ software
- USB 3.0 ports (two on rear, three on Fiery QuickTouch panel, two on NX Station GL)
- Microsoft® Windows® 10 IoT Enterprise 2019 LTSC
- FograCert Validation Printing System
- IDEAlliance Digital Press Certification

## FIERY COLOUR AND IMAGING TECHNOLOGY

- Speciality Dry Ink features
  - HD EA Gold, Silver, White, Clear, Media Expansion Low Gloss Clear or Fluorescent Pink Dry Inks
  - Fiery Spot Pro enables creation of dazzling custom spot colours that can include Speciality Dry Inks
  - Multi-Pass Printing of CMYK and/or Speciality Dry Inks for tactile, dimensional effects
- PANTONE® colour enabled
- Object Oriented Halftones
- RGB and CMYK rendering intent control
- Fiery Ultra Smooth Gradients
  - 1200 x 1200 dpi, 10-bit rendering resolution
- Text and graphics enhancement: Fiery Dynamic HD Text and Graphics, reverse text and graphics growth, colour text and graphics enhancement, positive text growth, trailing edge compensation, stroke thickening for graphics, colour character edge enhancement, black text and graphics anti-aliasing
- Fiery Graphic Arts Pro Package
  - Fiery Spot Pro, Fiery ImageViewer, Fiery Preflight, Fiery Postflight, Fiery Control Bar Builder
- Composite overprint
- Image smoothing
- Fiery Image Enhance Visual Editor
- Fiery Color Profiler Suite
  - Enables G7 calibration

## PERFORMANCE

- Fiery HyperRIP
- SmartRIP
- Spool-RIP-Print simultaneously
- Sequential Print

## ADOBE INTERPRETER SUPPORT

- Adobe® PDF Print Engine® (APPE) version 5\*
- CPSI version 3020

## FILE FORMAT SUPPORT

- Adobe® PostScript® Levels 1, 2, 3; Adobe PDF; PDF/X-1a, 3 and 4; EPS; JPEG; TIFF
- Microsoft Office document formats: doc, docx, xls,xlsx, ppt, pptx, pub (via Hot Folders)

## PRODUCTIVITY AND WORKFLOW

- Fiery Command WorkStation®
- Fiery JobExpert
- Fiery Smart Estimator
- Fiery Impose-Compose
  - Integration with many third-party offline finishers
- Integration with Xerox PredictPrint Media Manager
- Standard support for up to 330 mm x 1.2 m media
- Rush Printing, Schedule Print, Suspend on Mismatch, Job Reorder, Proof Print and Quick Doc Merge
- Fiery WebTools
- Fiery Drivers for Windows and Mac
- Fiery Hot Folders/Virtual Printers
- Booklet maker
- Set Page Device Mapping
- Sample Print
- Pad printing
- Auto trapping
- Fiery JobFlow Base
- Fiery Go (Android and IOS)
- Mixed Subset Finishing
- Slip sheet, job cover page and offset by sheets, copies or sets
- Fiery Custom Crease

## VARIABLE DATA PRINTING (VDP)

- Fiery FreeForm™ Create
- Supports the following formats:
  - Fiery FreeForm Plus
  - PPML 2.0/2.2/3.0
  - PDF/VT-1 and PDF/VT-2
  - Creo® VPS
  - VI Compose, Xerox® VIPP®, Xerox Speciality Imaging/FreeFlow® VI Suite
- VDP record and set level finishing, define record length, VDP multi-up booklet
- Fiery VDP imposition

## NETWORKING/CONNECTIVITY

- TCP/IP, AppleTalk, Bonjour support, SNMP, Port 9100, IPP, FTP, SMB, WSD, point and print, print via email (PS/PDF), IPv6 support, LDAP authentication

## SECURITY FEATURES

- Secure Erase
- Security profiles
- User data encryption
- Port-based access controls
- 802.1x advanced authentication methods
- USB security prevents the connection of external storage devices
- Port blocking
- IP filtering
- IPsec network encryption
- Secure connections using HTTPS with support for TLS 1.3
- Secure Printing
- Digitally signed software updates
- Windows 10 OS security features

## SECURITY FEATURES

- Fiery JDF v1.7 IDP-ICS certified
- Fiery API
- Xerox® FreeFlow® Digital Workflow Collection
- EFI MIS and web-to-print integration ready
- Prepress workflow integration (Agfa® Apogee, Kodak® Prinergy, Heidelberg® Prinect, SCREEN EQUIOS)

## DIMENSIONS/WEIGHT

- Print server
  - Height: 527.05 mm
  - Width: 234.95 mm
  - Depth: 463.55 mm
  - Weight: 21.77 kg
- NX Station GL (without server)
  - Height: 1,665 mm
  - Width: 800 mm
  - Depth: 866 mm
  - Weight: 45 kg

## POWER

- Print server
  - Auto-switching: 100–240 VAC
  - 50/60 Hz, 6 amps @100 VAC, 5 amps @240 VAC
  - Maximum power usage: 600 W
  - Typical power usage: 100 W
- NX Station GL
  - Auto-switching: 100–240 VAC
  - 50/60 Hz, 1.2 amps

## REGULATORY AGENCY APPROVALS

- Safety: CB-scheme, CE Mark (EU), UL 62368-1: 2014 (TUV NRTL), CAN/CSA C22.2 No. 62368-1-14, T-Mark by TUV, EN 62368-1 \_2014 +A11
- EMI/EMC: FCC Title 47, Part 15 Subpart B, Class A-NA, ICES-003, Issue 5, August 2012, Class A-NA, EN 55032: 2012/ AC: 2013 (EU) Class A, RCM Mark (Australia and New Zealand)- Class A, EN61000-3-2: 2014, EN610003-3: 2013, EN55035:2017

## OPTIONAL FIERY HARDWARE AND SOFTWARE

- Speciality Dry Ink kits
  - Enable up to two Speciality Dry Ink stations
- Additional Impose licences
- Additional Compose licences
- Fiery IPDS
- Acrobat/Enfocus PitStop Pro Kit
- EFI IQ
  - EFI IQ Dashboard (free)
  - EFI Insight (free)
  - EFI Go
  - EFI ColorGuard\*\*
  - EFI Manage
- Fiery JobFlow™\*\*\*
- Fiery JobMaster™\*\*\*
- Removable hard drive security kit
- Additional hard drive kits

\* Updated with enhancements and service releases on an ongoing basis.

\*\*Free 30-day trial available

Learn more about brilliant new opportunities for print at [xerox.co.uk](http://xerox.co.uk)