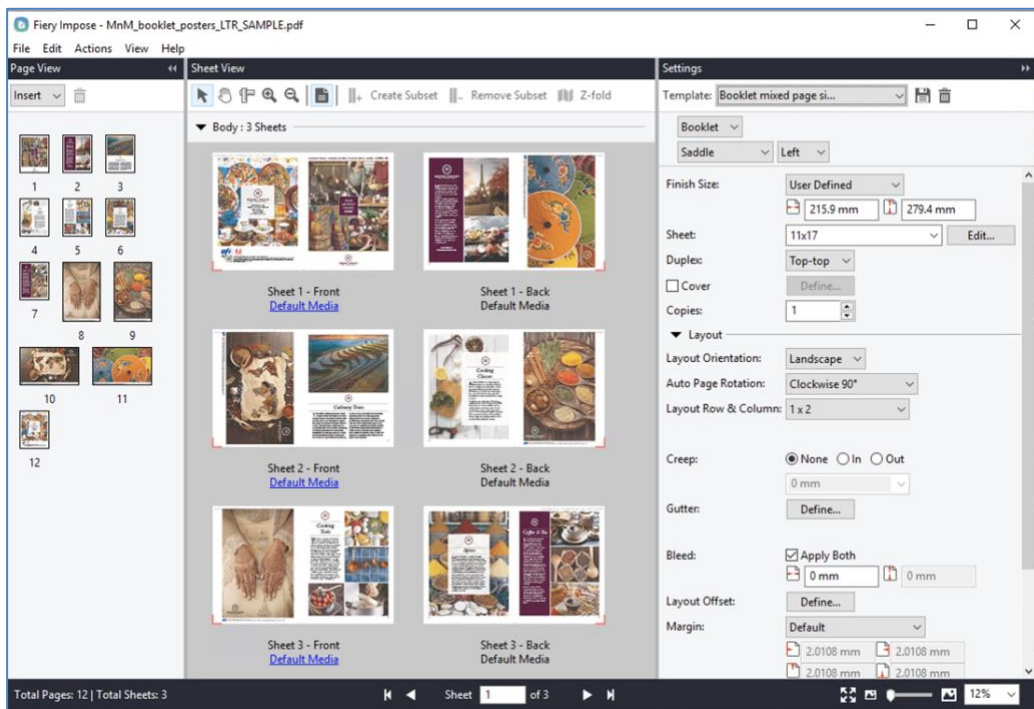


How-to: Automate rotation for pages with mixed orientation



Feature overview

Fiery® Impose will automatically detect and rotate pages in a job to ensure all pages use the orientation the user has specified. Jobs that contain mixed page sizes such as letter and 11 x 17, or A4 and A3, need this workflow.

Auto Page Rotation automatically matches the page orientation with the orientation of the desired output. Orientation of the desired output is determined by the specified finish size, not the media size. You can choose the auto-rotation direction: either 90 degrees clockwise or 90 degrees counter-clockwise. This feature works with normal, gang up, and booklet workflows using either user-defined or trim-box finish sizes. It does not work with VDP workflows or custom rotation.

The feature saves you time because it eliminates the need to manually locate the pages that require rotation and manually rotate pages before imposition. This is especially important for transactional printing. These jobs can contain hundreds and thousands of pages, and some pages may need to be rotated 90 degrees before the job can be imposed.

Objectives

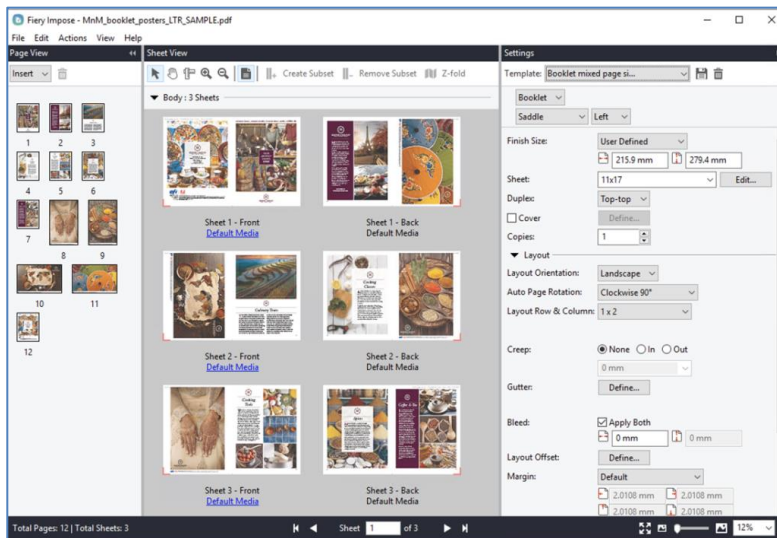
- Create an imposition template with auto rotation
- Submit a job using a Fiery Hot Folder

Additional resources

For additional software downloads, training resources, and more, go to [Fiery Online Resources](#).

Before you begin

- Open Fiery Command WorkStation® 6.7 or newer. Connect to a Fiery Driven™ printer running Fiery FS500 / FS500 Pro system software or newer.
 - Activate the Fiery Impose license on the computer running Command WorkStation. Fiery Impose can either be fully licensed or running in trial mode.
- To request the free 30-day trial for Fiery Impose, go to: <http://fiery.efi.com/impose/freetrial30>
- Place the sample file, MnM_booklet_posters_LTR_SAMPLE.pdf or MnM_booklet_posters_A4_SAMPLE.pdf in the Fiery server HELD queue. Drag the file to the Command WorkStation HELD list, or use the Command WorkStation Import Job menu option.
- Make sure that the printer and the Fiery server have been calibrated before printing any output.



Create an imposition template with auto rotation

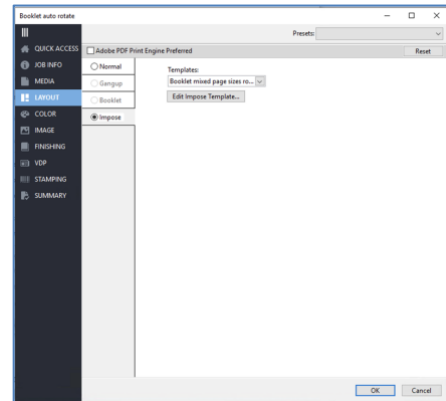
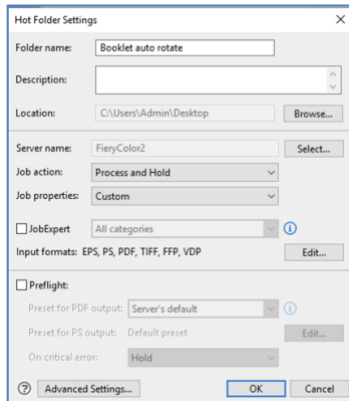
1. Select the MnM_booklet_posters_LTR_SAMPLE.pdf or MnM_booklet_posters_A4_SAMPLE.pdf file in the Command WorkStation HELD list. Then right-click to select Impose.
2. In the Settings pane, select the template Booklet 2-up saddle.
3. Select the finish size User Defined to honor the trim box and bleed box. You will be prompted that changing the finish size will reset the bleed values. Click OK to close the window and continue with the layout.
4. Select the sheet size 11 x 17 or A3. If you are using a Paper Catalog workflow, click Edit to assign the Paper Catalog media.
5. In Layout, set the following options:
 - Layout orientation, Landscape
 - Auto page rotation, Counterclockwise 90 degrees
6. In Scale, define the scaling option appropriate for your job. For this example, select Fit finish size proportionately.
7. Click the disk icon to name and save these settings as a template for future jobs. For this example, type **Booklet mixed page sizes rotated**, and click OK.

This template can be used with Fiery Impose, Fiery Hot Folders, and Fiery JobFlow. To use this template in Job Properties, Virtual Printers, and Server Presets; install the latest version of the Fiery Command WorkStation package on the Fiery server and activate an Impose license on the Fiery Server.

1. Now that the template is saved, click File > Exit or click the red X located in the corner to close Fiery Impose. The goal of this exercise is to create a template that will be applied to a Fiery Hot Folder.
2. Click No to close Impose without saving the layout.

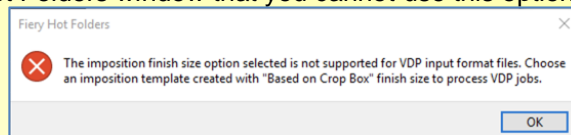
In the next section, you will create an automated workflow using a Fiery Hot Folder to apply the saved template.

Create a Fiery Hot Folder



1. Open the Fiery Hot Folders application.
2. In the Fiery Hot Folders console, create a new Hot Folder.
3. Click New.
4. Enter a folder name. For this example, type **Booklet auto rotate**.
5. Enter a description to indicate the settings to be applied.
6. Select the Fiery server.
7. Click Select.
8. Choose the server and click Connect.
9. Choose the job action to apply. For this example, select Process and Hold.
10. In Job Properties, select Define.
11. Click Layout.
12. Choose Impose.
13. Select the imposition template you created.
14. Click Media to assign the media or Paper Catalog entry. For this example, select 11 x 17 or A3, or a Paper Catalog selection appropriate for your workflow.
15. Click Finishing and select the folding and stapling options, if applicable.
16. Click OK to complete creating the Hot Folder.

Note: If *Finish Size* is selected as *User Defined* in the imposition layout, you will receive a warning message in the Fiery Hot Folders window that you cannot use this option with VDP jobs.



To correct this in the Hot Folder Settings, you must click the OK button's message.

Click the *Edit* button in the *Input Formats* field, and then deselect the *VDP* option from the General input formats list.

Click *OK* again to confirm and close the *Input Formats* window, and click the *OK* button in the Hot Folder settings window to exit.

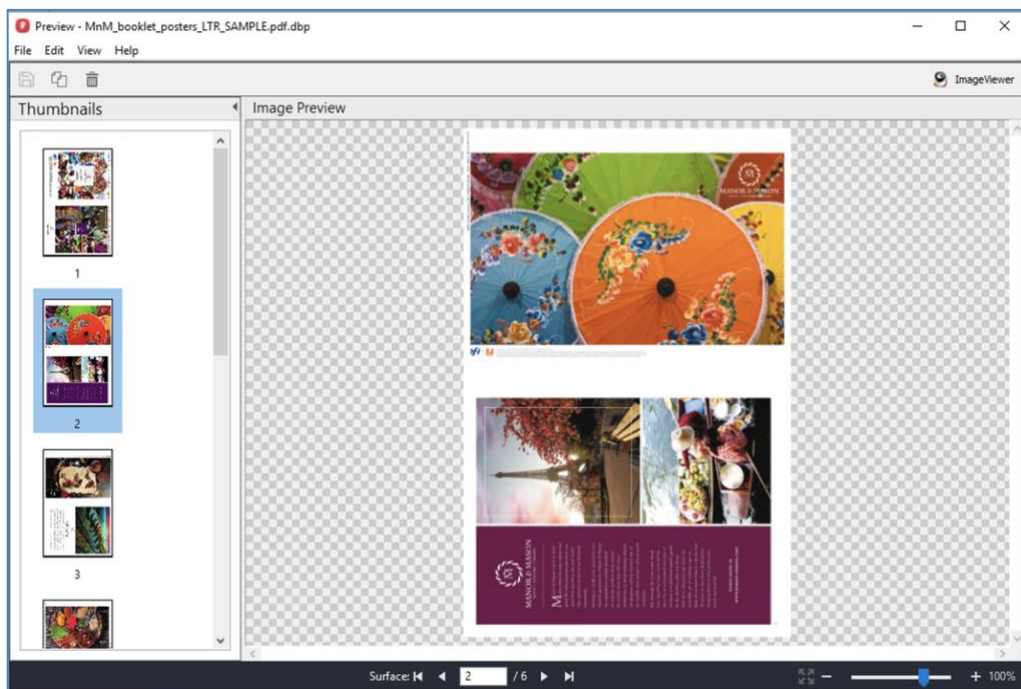
17. The new Hot Folder is ready for job submission.

Submit a job using the Hot Folder (option 1)

1. In the Fiery Hot Folders console, select the new **Fiery Hot Folder**.
2. Click Download Files.
3. Browse to locate the sample file **MnM_booklet_posters_LTR_SAMPLE.pdf** or **MnM_booklet_posters_A4_SAMPLE.pdf**. Then click Select.
4. In Command WorkStation, locate the submitted job in the HELD queue. Right-click the job and select **Preview**.
5. In Preview, view the job to verify the booklet imposition contains the mixed-orientation pages.

Submit a job using the Fiery Hot Folder from a Windows client computer (option 2)

1. On the same client computer with the Fiery Hot Folders application, locate the **MnM_booklet_posters_LTR_SAMPLE.pdf** or **MnM_booklet_posters_A4_SAMPLE.pdf** file.
2. Right-click and select **Download to Hot Folder**.
3. Select the Hot Folder you created, **Booklet auto rotate**.
4. In Command WorkStation, locate the submitted job in the Held queue.
5. Right-click the job and select **Preview**.
6. In Preview, view the job to verify the booklet imposition contains the mixed-orientation pages.



We develop breakthrough technologies for the manufacturing of signage, packaging, textiles, ceramic tiles, building materials and personalized documents, with a wide range of printers, inks, digital front ends, and a comprehensive business and production workflow suite that transforms and streamlines the entire production process, increasing your competitiveness and boosting productivity. Visit www.efi.com for more information.



Nothing herein should be construed as a warranty in addition to the express warranty statement provided with EFI products and services.

The APPS logo, AutoCal, Auto-Count, Balance, BESTColor, BioVu, BioWare, ColorPASS, Colorproof, ColorWise, Command WorkStation, CopyNet, Cretachrom, Cretaprint, the Cretaprint logo, Cretaprinter, Cretaroller, Digital StoreFront, DirectSmile, DocBuilder, DocBuilder Pro, DockNet, DocStream, DSFdesign Studio, Dynamic Wedge, EDOX, EFI, the EFI logo, Electronics For Imaging, Entrac, EPCount, EPPPhoto, EPRegister, EPStatus, Estimate, ExpressPay, FabriVU, Fast-4, Fiery, the Fiery logo, Fiery Driven, the Fiery Driven logo, Fiery JobFlow, Fiery JobMaster, Fiery Link, Fiery Navigator, Fiery Prints, the Fiery Prints logo, Fiery Spark, FreeForm, Hagen, Inkintensity, Inkware, LapNet, Logic, Metrix, MicroPress, MiniNet, Monarch, OneFlow, Pace, Pecas, Pecas Vision, PhotoXposure, PressVu, Printcafe, PrinterSite, PrintFlow, PrintMe, the PrintMe logo, PrintSmith, PrintSmith Site, PrintStream, Print to Win, Prograph, PSI, PSI Flexo, Radius, Remoteproof, RIPChips, RIP-While-Print, Screenproof, SendMe, Sincrolor, Splash, Spot-On, TrackNet, UltraPress, UltraTex, UltraVu, UV Series 50, VisualCal, VUTEk, the VUTEk logo, and WebTools are trademarks of Electronics For Imaging, Inc. and/or its wholly owned subsidiaries in the U.S. and/or certain other countries.

All other terms and product names may be trademarks or registered trademarks of their respective owners, and are hereby acknowledged.