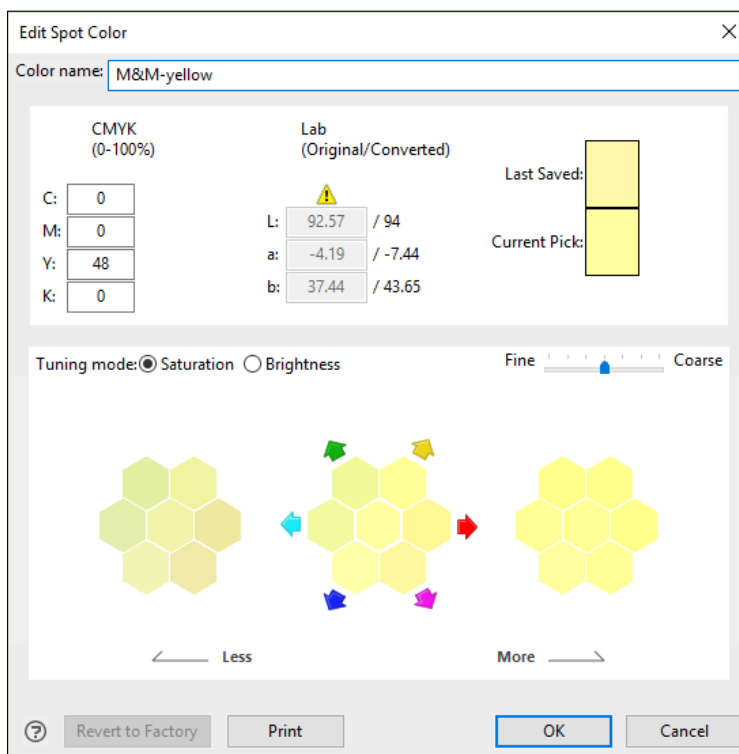


# How-to: Capture spot colors and reproduce them accurately



## Feature overview

EFI offers two methods for managing spot colors on the Fiery digital front end (DFE): Fiery Spot-On and Fiery Spot Pro.

Fiery Spot-On is standard on most Fiery FS500/FS500 Pro servers. With Fiery Spot-On, you can achieve the most accurate color matching for logo colors and other spot colors in an automated, application-independent workflow. The feature allows you to manage named colors on the Fiery server, including all PANTONE®, HKS, Toyo and DIC libraries. This feature converts named colors for popular color systems directly on the Fiery server to reproduce the best color match, considering the output color profile parameters. In addition, you can create custom named spot colors.

Fiery Spot Pro is part of [Fiery Graphic Arts Pro Package](#) (Fiery FS500 Pro external servers) or [Fiery ColorRight Package](#) (Fiery FS500 embedded servers). In addition to everything offered by Spot-On, it provides advanced spot color management tools, like creating a spot color alias, the ability to import/export .ase files, easier access to editing spot colors, and more.

[Learn more](#) about the differences between Spot-On and Spot Pro.

The optional EFI ES-3000 spectrophotometer adds the ability to capture colors precisely. The EFI ES-3000 provides colorimetric values and automatically enters them in Spot-On or Spot Pro.

## Objectives

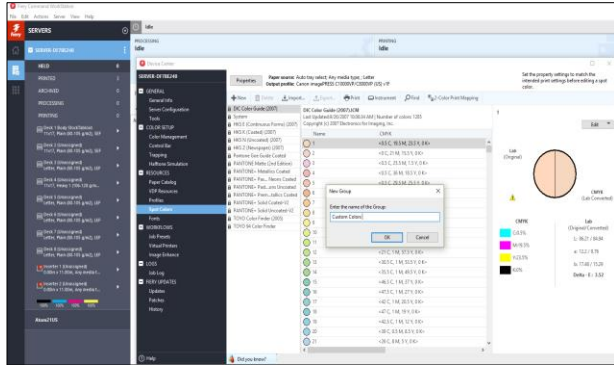
- Launch Spot-On or Spot Pro and Create a new spot color group.
- Add a new spot color using the EFI ES-3000.
- Print a letterhead template using the new spot color.

## Additional resources

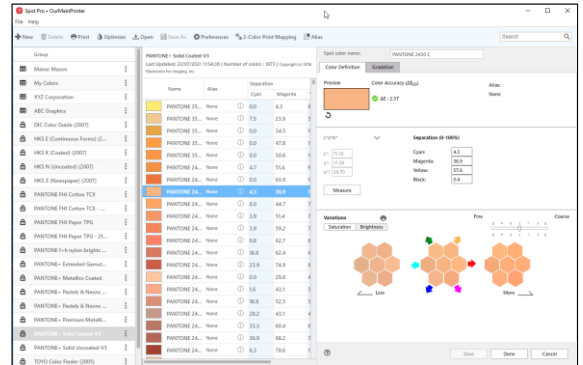
For additional software downloads, training resources, and more, go to [Fiery Online Resources](#).

## Before you begin

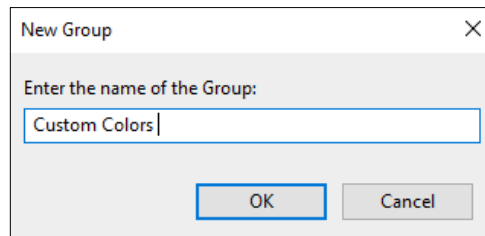
1. Open Fiery Command WorkStation® 6.7 or later and connect to at least one Fiery server running Fiery FS500/FS500 Pro.
2. Connect the EFI ES-3000 spectrophotometer to the computer running Command WorkStation.
3. Optional: Have [Fiery Color Profiler Suite](#) software installed with an activated license on the Command WorkStation computer.
4. Optional: Activate one of the following software packages to access Fiery Spot Pro
  - Fiery Graphic Arts Pro Package for Fiery FS500 Pro external servers (request your [free trial](#))
  - Fiery ColorRight Package for Fiery FS500 embedded servers (request your [free trial](#))
5. Have a colored element such as a business card, a fabric with a solid color or packaging.
6. Place the sample file, **MnM\_letterhead\_LTR\_SAMPLE.pdf** or **MnM\_letterhead\_A4\_SAMPLE.pdf**, in the Fiery server HELD queue. Drag the file to the Command WorkStation HELD list or use the Command WorkStation Import menu option.
7. Ensure the printer and Fiery server have been calibrated before printing any output.



**Fiery Spot-On**



**Fiery Spot Pro**



## Getting started

These steps will cover both Spot-On and Spot Pro. Please follow the directions that correspond to your Fiery server configuration.

### If you are using Fiery Spot-On:

1. In the Command WorkStation menu, click **Server > Device Center**.
2. Under RESOURCES tab, click **Spot Colors**.
3. Click **Properties** and assign the Output Profile. This will be used to create the custom spot color and specify the media associated with the Output Profile for printing color samples.
4. In the Job Properties window, click the **Color** icon.
5. Select the **Output profile** that matches the media loaded in the print engine you are using.
6. Click the **Media** icon. Select the paper catalog or media print options for your workflow.
7. Click **OK** to close Job Properties.

### If you are using Fiery Spot Pro:

1. In Fiery Command WorkStation, click on the **Spot Pro** button.
2. Click in the **Output Profile** box and select the profile for the media that you will be printing o

## Create a new spot color group in Spot-On or Spot Pro

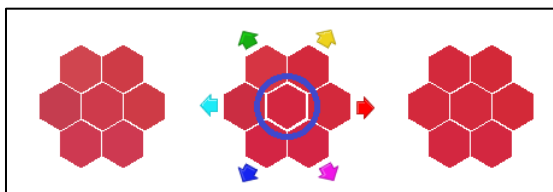
1. Click **+ New > Group**.
2. **Enter the name** of the Group. For this exercise, type **Custom Colors** and then click **OK**. The new group will be listed in on the left-hand side of the Spot Colors window.
3. Select the new group Custom Colors. No colors will be listed in the new group yet. In the next section, you will create a new color to add to this group.

## Add a new spot color in Spot-On using the EFI ES-3000

1. In this exercise, you will use the EFI ES-3000 with Spot-On to measure the color values from a red sample.
2. Click **Instrument**.
3. The spectrophotometer calibration window will open. Follow the on-screen instructions, placing the EFI ES-3000 in its cradle, and click **Calibrate**.
4. With the **Custom Colors** group selected, click **+ New > Spot Color**.
5. Enter a Color name. For this example, type the color name: **M&M-red**.

The spot color name is case sensitive and must be exact for proper printing.

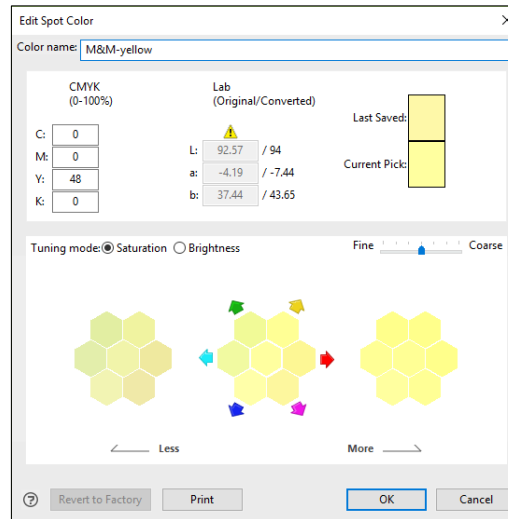
6. Remove the EFI ES-3000 from the calibration cradle and place it on the color to import.
7. Press the button on the side of the EFI ES-3000 to measure the color and display the color values.
8. The color will be displayed in the center of color chart. If desired, you can refine the color by clicking on one of the other color patches.



9. To compare the imported color to the original color of the red card, click **Print** in the New Spot Color window.

A warning dialog box may appear, informing you that the calibration for the media chosen from the Paper Catalog is outside the specified limits in calibration preferences. Calibration is recommended for consistent results. Click Print Anyway.

10. Compare the red card color with the center square of the printout and select a closer match by clicking on the appropriate square (on screen) and re-printing the target. Very little adjustment is usually necessary.
11. When the desired match is achieved, click **Add Another** to add another spot color.
12. Type the Color name: **M&M-yellow**.
13. Use the same method used earlier to measure the desired yellow color with EFI ES-3000.



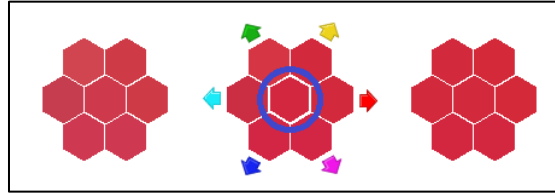
14. After compare the imported color to the original color and the desired match is achieved, click OK to close.

### Add a new spot color in Spot Pro using the EFI ES-3000

1. In this exercise, you will use the EFI ES-3000 with Spot Pro to measure the color values from a red sample.
2. With the Custom Colors group selected, click + New > Spot Color.
3. In the Spot color name box in the upper right-hand area of the Spot Pro interface, enter a Color name. For this example, type the color name: M&M-red.

The spot color name is case sensitive and must be exact for proper printing.

4. In the right-hand column, under the  $L^*a^*b^*$  area, click on the **Measure** button.
5. Your system will automatically search for your connected EFI ES-3000 and prompt you to place it on the calibration plate. After this is done, click **OK**.
6. After calibration has completed, remove the EFI ES-3000 from the calibration cradle and place it on the color to import.
7. Press the button on the side of the EFI ES-3000 to measure the color and display the color values.
8. The color will be displayed in the Preview box and in the center of the Variations display. If desired, you can refine the color by selecting one of the other color patches.

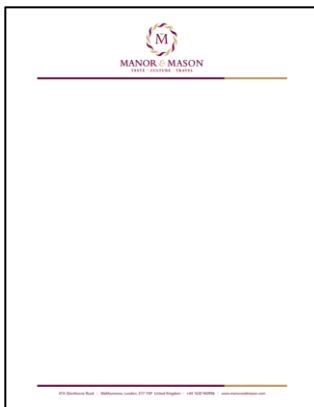


9. To compare the imported color to the original color of the red sample, click **Print** in the Variations section.

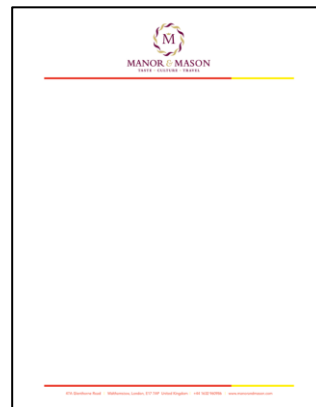
A warning dialog box may appear, informing you that the calibration for the media chosen from the Paper Catalog is outside the specified limits in calibration preferences. Calibration is recommended for consistent results. Click **Print Anyway**.

10. Compare the printed color sample with the center square of the printout and select a closer match by clicking on the appropriate square (on screen) and re-printing the target. Very little adjustment is usually necessary.
11. When the desired match is achieved, click **Save**.
12. Once again, click **+ New > Spot Color** to add another spot color.
13. Type in the Color name: **M&M-yellow**.
14. Click the **Measure** button and use the same method used earlier to measure the desired yellow color with EFI ES-3000.
15. Click **Save**.
16. Click **Done**.
17. After compare the imported color to the original color and the desired match is achieved, click **OK** to close.
18. In the next section you will apply the new spot colors.

## Print a file using the new spot colors added in Spot-On or Spot Pro



Printed without custom spot colors added



Printed after adding custom spot colors

- 
1. Select the **MnM\_letterhead\_LTR\_SAMPLE.pdf** or **MnM\_letterhead\_A4\_SAMPLE.pdf** file in the Command WorkStation **Held** list. Then right-click and select **Print**.
  2. The document will now print the letterhead as the newly added custom spot colors.

We develop breakthrough technologies for the manufacturing of signage, packaging, textiles, ceramic tiles, building materials and personalized documents, with a wide range of printers, inks, digital front ends, and a comprehensive business and production workflow suite that transforms and streamlines the entire production process, increasing your competitiveness and boosting productivity. Visit [www.efi.com](http://www.efi.com) for more information.



Nothing herein should be construed as a warranty in addition to the express warranty statement provided with EFI products and services.

The APPS logo, AutoCal, Auto-Count, Balance, BESTColor, BioVu, BioWare, ColorPASS, Colorproof, ColorWise, Command WorkStation, CopyNet, Cretachrom, Cretaprint, the Cretaprint logo, Cretaprinter, Cretaroller, Digital StoreFront, DirectSmile, DocBuilder, DocBuilder Pro, DockNet, DocStream, DSFdesign Studio, Dynamic Wedge, EDOX, EFI, the EFI logo, Electronics For Imaging, Entrac, EPCount, EPPPhoto, EPRegister, EPStatus, Estimate, ExpressPay, FabriVU, Fast-4, Fiery, the Fiery logo, Fiery Driven, the Fiery Driven logo, Fiery JobFlow, Fiery JobMaster, Fiery Link, Fiery Navigator, Fiery Prints, the Fiery Prints logo, Fiery Spark, FreeForm, Hagen, Inkensity, Inkware, LapNet, Logic, Metrix, MicroPress, MiniNet, Monarch, OneFlow, Pace, Pecas, Pecas Vision, PhotoXposure, PressVu, Printcafe, PrinterSite, PrintFlow, PrintMe, the PrintMe logo, PrintSmith, PrintSmith Site, PrintStream, Print to Win, Prograph, PSI, PSI Flexo, Radius, Remoteproof, RIPChips, RIP-While-Print, Screenproof, SendMe, Sincolor, Splash, Spot-On, TrackNet, UltraPress, UltraTex, UltraVu, UV Series 50, VisualCal, VUTEk, the VUTEk logo, and WebTools are trademarks of Electronics For Imaging, Inc. and/or its wholly owned subsidiaries in the U.S. and/or certain other countries.

All other terms and product names may be trademarks or registered trademarks of their respective owners, and are hereby acknowledged.