
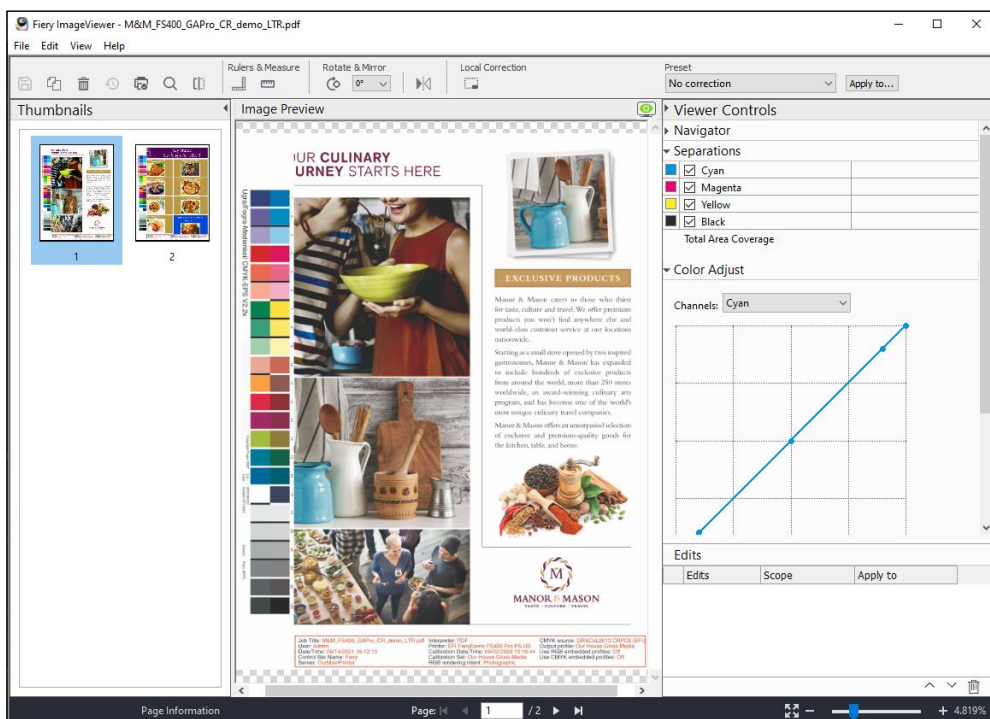


How-to: Use tools in the Fiery Graphic Arts Pro Package to adjust color and troubleshoot file issues

How-to: Use tools in the Fiery Graphic Arts Pro Package to adjust color and troubleshoot file issues



Feature overview

This how-to guide demonstrates how [Fiery Graphic Arts Pro Package](#) for Fiery FS500 Pro external servers can help reduce wasted prints and improve efficiency by using tools right on the Fiery server to troubleshoot files and make color adjustments.

You will use the following Fiery features in this how-to guide:

Fiery Preflight Pro: Provides the ultimate set of PDF quality control checks to ensure files will print as expected. Verify file compliance to industry standards, and view any errors in the visual Preflight Pro Report.

Fiery Postflight: A visual tool that provides a color-coded report to help diagnose and fix file element errors.

Fiery Spot Pro: A powerful spot color management tool to help deliver the most accurate brand colors.

Fiery ImageViewer: View and edit raster files at full resolution. Make color adjustments and replacements right in ImageViewer, with no need to go back to prepress or to the designer.

Objectives

- View potential file errors using Preflight Pro
- View the Postflight report
- Import spot colors and create a spot color alias in Spot Pro
- Optimize the color accuracy of spot colors
- Generate a custom spot color swatch book
- Make color adjustments and replacements in ImageViewer

Additional resources

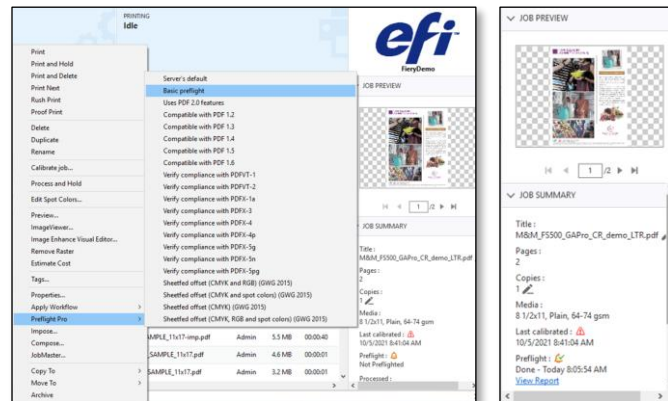
For additional software downloads, training resources, and more, go to [Fiery Online Resources](#).

Before you begin

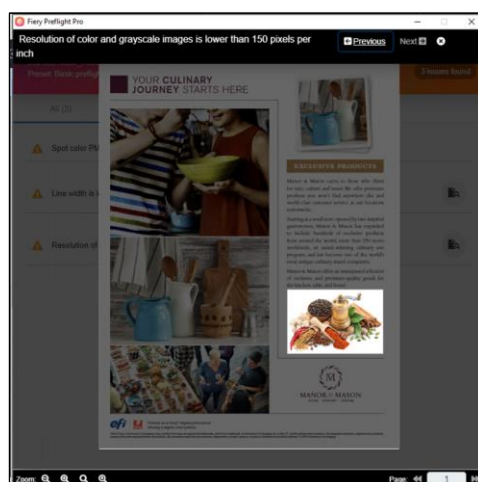
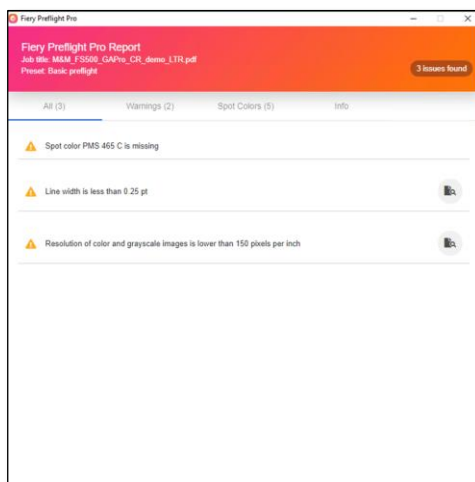
- Open [Fiery Command WorkStation® 6.7](#) or later and connect to an external Fiery server running Fiery FS500 Pro or newer.
- Activate Fiery Graphic Arts Pro Package (request your [free trial](#))
- Import **M&M_FS500_GAPro_CR_demo_LTR.pdf (M&M_FS500_GAPro_CR_demo_A4.pdf)** into the Fiery server Hold queue. Drag the file to the Command WorkStation Held list or use the Command WorkStation Import menu option.
- Ensure the printer and Fiery server have been calibrated before printing any output.

How-to: Use tools in the Fiery Graphic Arts Pro Package to adjust color and troubleshoot file issues

Preflight the job using Fiery Preflight Pro

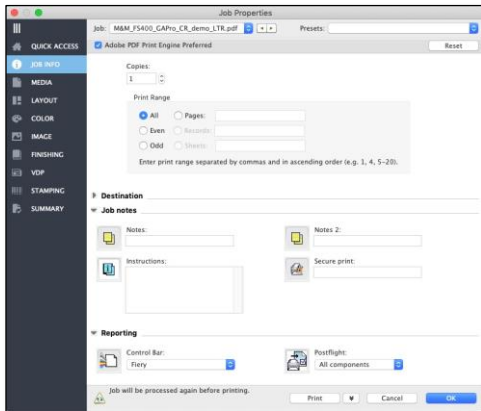


1. Select the **M&M_FS500_GAPro_CR_demo_LTR.pdf** (**M&M_FS500_GAPro_CR_demo_A4.pdf**) file in the Command WorkStation Held list.
2. Right-click to select Preflight Pro, and then select **Basic Preflight** from the list
3. The Fiery server will process the job, and create the Fiery Preflight Pro Report. In the Job Summary window, locate the Preflight section and click on the **View Report** link. You can also view the Preflight Pro Report by right-clicking on the job and selecting **View Preflight Report**
4. A new pop-up window will show the **Fiery Preflight Pro Report**, which shows detailed information about issues, warnings and spot colors found or missing in the current job. Depending on the type of the error, you can see the exact location of the error in the file.
5. In this case, 3 errors were found:
 - a. One missing spot color, PMS 465 C (we'll fix this using Spot Pro in a later step).
 - b. One notification that a line width is less than 0.25 pt. Click on **the magnifier icon** to view where this is found in the document.
 - c. One notification that the resolution of color and grayscale images is lower than 150 pixels per inch. Click on **the magnifier icon** to view where this is found in the document. To fix low-resolution images, turn on Image Smoothing (Job Properties > Image > Image Smoothing)
6. You can also see the previous and next issues using the navigation buttons. To close the Preflight Pro Report, **click on the X button**, located in the upper right-hand corner.



How-to: Use tools in the Fiery Graphic Arts Pro Package to adjust color and troubleshoot file issues

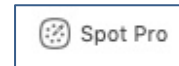
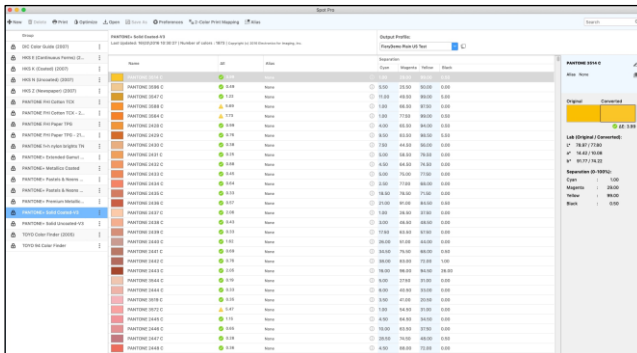
View the Postflight report



1. Select the **M&M_FS500_GAPro_CR_demo_LTR.pdf (M&M_FS500_GAPro_CR_demo_A4.pdf)** file in the Command WorkStation Held list. Then right-click to select **Properties**.
2. Click the **Job Info** icon.
3. Under Reporting, select a **Control Bar** to apply from the drop-down menu.
4. For **Postflight** select the reporting level for the job.
5. For this example, select **All Components** to generate a complete report, including the Concise report, Test page, and Color-coded pages.
6. Click the **Media** icon.
7. In Output paper size, select **11x17** or **A3**.
8. Ensure **Adobe PDF Print Engine Preferred** is checked at the top of the Job Properties window.
9. Click **Print** to apply the Job Properties and print the job.
If you're unable to print, you can view the Postflight report by using Process & Hold, then opening the job in Preview or ImageViewer.
10. The job will be printed with the complete Postflight report. The Postflight report will color code each element on the page to reflect the type of color data used. **Note: the color-coding scheme is different when the job is processed via Adobe PDF Print Engine vs Postscript.**
11. In the color-coded page report, review the brown objects to identify the placement for the missing spot color (**PMS 465 C**).
12. The complete report will also detail the color settings used to print the job and tools that can be used to adjust the color output. It also includes an engine test page that can be used to help identify engine defects.

How-to: Use tools in the Fiery Graphic Arts Pro Package to adjust color and troubleshoot file issues

Import spot colors and create a spot color alias in Spot Pro



1. Open **Spot Pro** by clicking the icon in the Command WorkStation Job Center or by selecting it from the Server menu.
2. Click Open in the toolbar, then navigate to the same directory where M&M_FS500_GAPro_CR_demo_LTR.pdf (M&M_FS500_GAPro_CR_demo_A4.pdf) is and choose **Manor Mason.ase**

ASE stands for Adobe Swatch Exchange. An .ase file is a set of spot colors that are output from an Adobe Creative Suite application, such as InDesign or Illustrator. You can also export .ase files from Spot Pro that a designer can import into their Adobe application. Sharing .ase files with designers allows both the designer and the Print Service Provider (PSP) to work from the same set of named colors and ensures brand color consistency from design to production. And, it saves the PSP time by not having to manually enter new named spot colors in Spot Pro.

3. You will now see a new swatch group in the left-hand pane - **Manor Mason**.
4. Click on the **Alias** icon in the top toolbar.
5. In the Original color bar, type **PMS 465 C**, then click the plus sign.
6. In the Alias to... bar, type in **PANTONE 465 C**, then click the magnifying glass to search.
7. From the search results, select **PANTONE 465 C** that appears in the Manor Mason spot color group.
8. Click **Add Alias**, then click **Apply & Close**.

Using a spot color alias allows you to map a named color to another named color. This functionality is similar to substitute colors, where you can map a named color to a set of RGB or CMYK values. Using an alias is great for situations where a specific named color may have different names depending on who is working on the file, as in this example. With an alias, you simply need to point to the correct named color in the Spot Pro library, which is more efficient than creating another named color.

Optimize spot colors

Note, to complete the Optimize spot colors exercise, you will need access to a printer and a supported spectrophotometer, such as the EFI ES-3000.

1. Select all the colors in the **Manor Mason** spot color group.
2. Click in the **Output Profile** box and select the profile appropriate for the media that you will be printing on.
3. Click on the **Optimize** button in the upper tool bar.
4. With the Selected colors only option enabled, click **OK**.
5. Ensure that your spectrophotometer is selected and that the **Settings** are configured correctly and click **Print**.
6. In the Preferences window that opens, ensure that you media is properly specified on the **Media** tab and click **OK**.
7. When prompted, calibrate your spectrophotometer, and measure the printed chart. When finished, click **Next**.
8. The Optimize results window will open and display the average and peak Delta E results of the first measurement. To improve the color accuracy of the selected colors, click the **Iterate** button.
9. Print and measure the newly generated chart. Updated results will now be displayed. Lower Delta E values indicate more accurate color reproduction. You can continue the iteration process until you are satisfied with the results, or the results stop improving.
10. When you are finished, click **Apply**.
11. The selected spot colors will now print with improved accuracy when printed with the Output Profile that you selected when you performed the optimization process.

Print a custom spot color swatch book

Now that your selected spot colors have been optimized to improve their accuracy, you can print a custom swatch book to supply to your client. This will help set your client's expectations as to how their jobs will print.

1. Select all the (now optimized) colors in the **Manor and Mason** spot color group.
2. Click in the **Output Profile** box and select the profile appropriate for the media that you will be printing on.
3. Click on the **Print** button in the upper tool bar.
4. In the Print window that opens, select your desired **Patch size**, **Chart size**, and the **Paper Source** for the media that you will be printing on.
5. If desired, enter a **Customer name** and **Contact information** and then click on the **Job Properties** button.
6. In the Preferences window that opens, ensure that you media is properly specified on the **Media** tab and click **OK**.
7. Returning to the Print window, click **Print** to print your custom swatch book. This book can now be supplied to your customer to show them what their selected spot colors will look like on their selected media.



Make color adjustments and replacements in ImageViewer

1. Right click on M&M_FS500_GAPro_CR_demo_LTR.pdf (M&M_FS500_GAPro_CR_demo_A4.pdf). Open Job Properties and under Postflight, select **Off**. Under Control Bar, select **Off**. Then select **Process and Hold**.
2. Right click on M&M_FS500_GAPro_CR_demo_LTR.pdf (M&M_FS500_GAPro_CR_demo_A4.pdf) and select **ImageViewer**.
3. Note that the Exclusive Products text box is now all the same color. Previously, it had a border that used an incorrect spot color (PMS 465 C). Remember that we used the Alias feature in Spot Pro to map this to the correct spot color (PANTONE 465 C).

Before Alias



After Alias



4. When we ran the Preflight Pro report, it was noted that a low-resolution image was found in the file. Here's the difference in the spices image with and without Image Smoothing, as seen in ImageViewer.

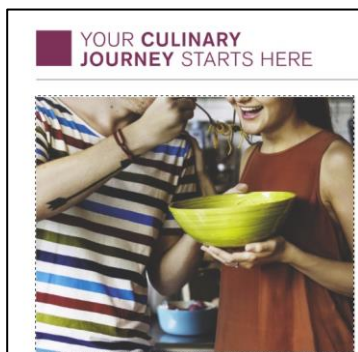


Before Image Smoothing
(pixelated image, zoom in on this page to see better)



After Image Smoothing
(pixelation less apparent)

5. Select **Local Correction** from the toolbar.
6. **Draw a box** around the image on the top left of the page

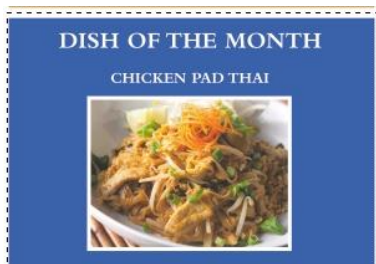


7. In the **Color Adjust** pane, **adjust each color curve** as needed to lighten the overall tone of the image. Note that only this

How-to: Use tools in the Fiery Graphic Arts Pro Package to adjust color and troubleshoot file issues

image is changing, everything else on the page remains as-is. Once you've finished the curve adjustments, click **Apply** (to the right of the Local Correction icon). You will see this curve edit appear in the Edits pane on the bottom right of the ImageViewer window.

8. Navigate to page 2 in the **Pages** pane on the left-hand side of the ImageViewer window
9. Ensure that **Local Correction** is still selected (if not, click on the icon again to select).
10. **Draw a box** around the blue Dish of the Month box on the page.



11. In the **Color Replacement** pane, click on the eyedropper icon on the left. Click on any of the blue area in the selected box.
12. Click on the **Spot Pro icon** next to the right eyedropper icon.
13. In the **Search Spot Color** bar, type in **229 C**. Choose the **PANTONE 229 C** entry in the **Manor Mason** spot color group. Then click **OK**, and then click **Apply**.
Note: you could also use the eyedropper here to select the maroon from any other area of the page
14. You will see that the background of the Dish of the Month box has now turned maroon. You will also see this color replacement reflected in the Edits pane on the bottom right of the ImageViewer window.

Note: you may still see an outline of the previous color in the Image Preview. This is just a quirk with that zoom percentage – zoom to 100% to see that it will print correctly.

Local color edits (curves and color replacements) allow you to edit a very specific area of the page without affecting color on any other portion of the page. This makes prepress processes more efficient, since simple color edits can be made right in ImageViewer, with no need to go back to the designer or the native file.

We develop breakthrough technologies for the manufacturing of signage, packaging, textiles, ceramic tiles, building materials and personalized documents, with a wide range of printers, inks, digital front ends, and a comprehensive business and production workflow suite that transforms and streamlines the entire production process, increasing your competitiveness and boosting productivity. Visit www.efi.com for more information.



Nothing herein should be construed as a warranty in addition to the express warranty statement provided with EFI products and services.

The APPS logo, AutoCal, Auto-Count, Balance, BESTColor, BioVu, BioWare, ColorPASS, Colorproof, ColorWise, Command WorkStation, CopyNet, Cretachrom, Cretaprint, the Cretaprint logo, Cretaprinter, Cretaroller, Digital StoreFront, DirectSmile, DocBuilder, DocBuilder Pro, DockNet, DocStream, DSFdesign Studio, Dynamic Wedge, EDOX, EFI, the EFI logo, Electronics For Imaging, Entrac, EPCount, EPPPhoto, EPRegister, EPStatus, Estimate, ExpressPay, FabriVU, Fast-4, Fiery, the Fiery logo, Fiery Driven, the Fiery Driven logo, Fiery JobFlow, Fiery JobMaster, Fiery Link, Fiery Navigator, Fiery Prints, the Fiery Prints logo, Fiery Spark, FreeForm, Hagen, Inkintensity, Inkware, LapNet, Logic, Metrix, MicroPress, MiniNet, Monarch, OneFlow, Pace, Pecas, Pecas Vision, PhotoXposure, PressVu, Printcafe, PrinterSite, PrintFlow, PrintMe, the PrintMe logo, PrintSmith, PrintSmith Site, PrintStream, Print to Win, Prograph, PSI, PSI Flexo, Radius, Remoteproof, RIPChips, RIP-While-Print, Screenproof, SendMe, Sincolor, Splash, Spot-On, TrackNet, UltraPress, UltraTex, UltraVu, UV Series 50, VisualCal, VUTEk, the VUTEk logo, and WebTools are trademarks of Electronics For Imaging, Inc. and/or its wholly owned subsidiaries in the U.S. and/or certain other countries.

All other terms and product names may be trademarks or registered trademarks of their respective owners, and are hereby acknowledged.