

How-to: Produce notepads

A photograph showing a variety of spices and herbs in small white bowls. The spices include ground yellow and red powders, whole seeds, and dried herbs. Some bowls have small white labels with text like 'FENIGRAN' and 'FENIGRAN'. The bowls are arranged in a grid-like pattern, and some have small metal scoops resting in them.

Feature overview

Pads or notepads have an unlimited number of uses including memo or message pads, forms, and personalized notepads as promotional advertising material.

The Fiery® sever can automate the production of printing pads. The Pad Printing feature minimizes manual collation of the printed output and makes it possible to print large and small projects with as many sheets as you wish and as many sizes. From tiny pocket notepads to large desktop calendars, Pad Printing lets you quickly and easily create pads with any number of pages.

Objectives

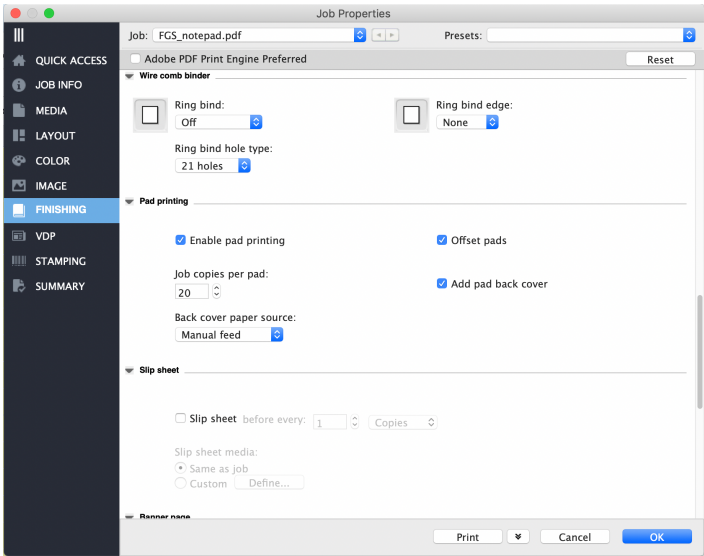
- Create a notepad using the pad printing workflow

Additional resources

For additional software downloads, training resources, and more, go to [Fiery Online Resources](#).

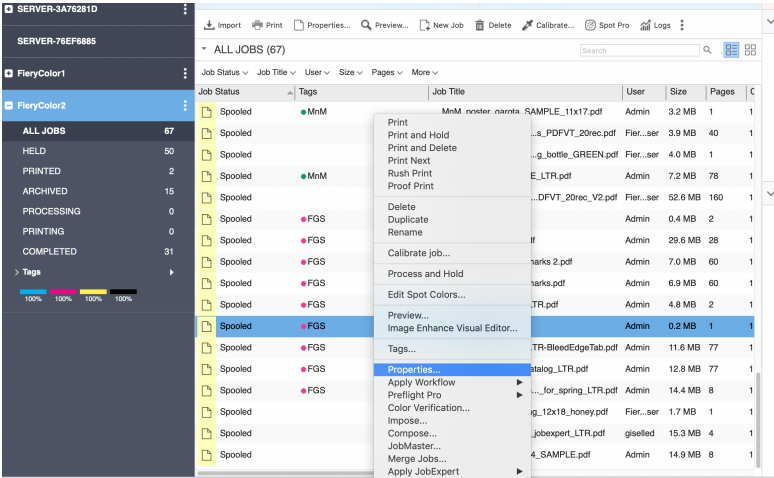
Before you begin

- Open Fiery Command WorkStation® 6.7 or newer. Connect to a Fiery Driven™ printer running Fiery **FS500/FS500** Pro system software or newer.
 - Activate the Fiery Impose license on the computer running Command WorkStation. Fiery Impose can either be fully licensed or running in trial mode.
- To request the free 30-day trial for Fiery Impose, go to: <http://fiery.efi.com/impose/freetrial30>.
- Place the sample file, MnM_notepad_SAMPLE.pdf in the Fiery server HELD queue. Drag the file to the Command WorkStation HELD list, or use the Command WorkStation Import Job menu option.
- Make sure that the printer and the Fiery server have been calibrated before printing any output.

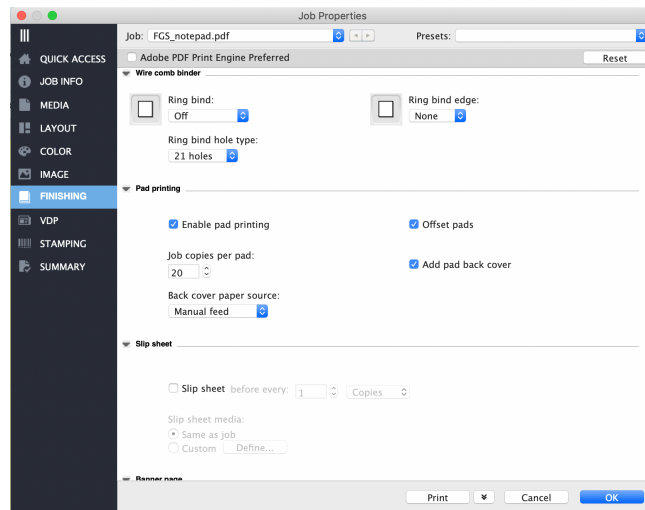


Pad printing workflow

If you want to avoid the manual collation of printed output to create a notepad, then you can use Fiery server's Pad Printing feature which automates the process to print large and small notepads with as many sheets as you wish and as many sizes.

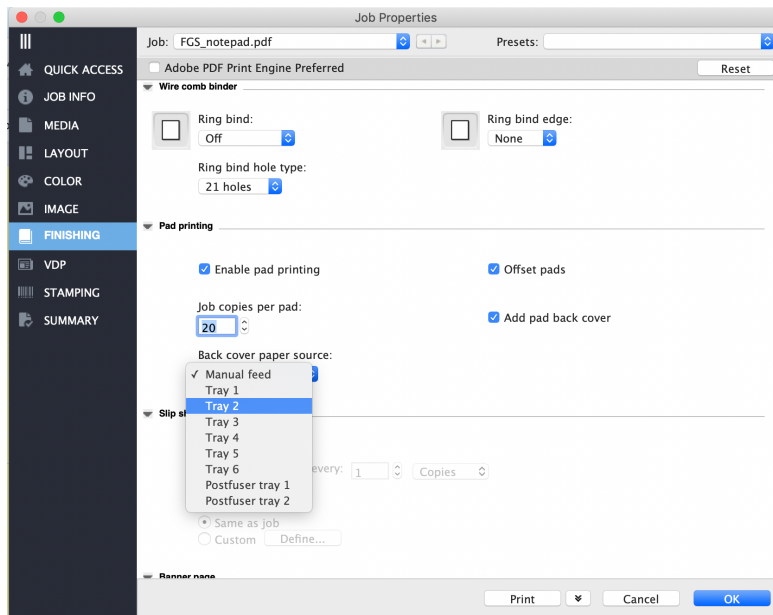


1. First, select the notepad file in the Fiery Command WorkStation job list that you want to print and right-click the mouse to select **Properties** option.

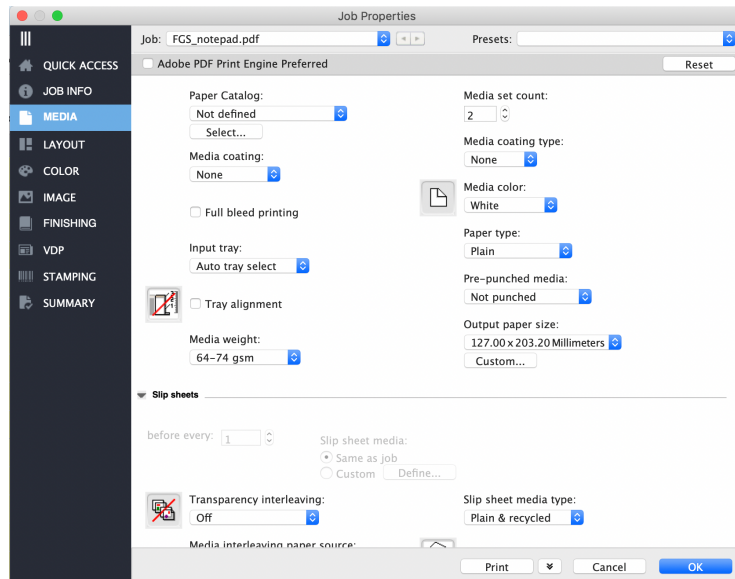


2. In the Job Properties window, open the **Finishing** tab.
3. Next, scroll down to **Pad Printing** section and select the **Enable Pad Printing** check box.
4. Enter the number of **Job Copies per pad**. You can set the number of copies from 1-999.
5. Select the **Offset pads** check box to add an offset pad to the notepad and select **Add pad back cover** check box to add a back cover to the notepad.

Note: The Add pad back cover option is not available on all printers. When using this option, you can also use the Back cover paper source option to specify cover media.



6. If your printer supports the Add back cover option, then click the **Back cover paper source** dropdown and select the tray.



7. Next, open the **Media** tab and select the appropriate media options for your pad printing workflow.
8. Once you have selected the appropriate media setting, click the **Print** button to print the notepad.

We develop breakthrough technologies for the manufacturing of signage, packaging, textiles, ceramic tiles, building materials and personalized documents, with a wide range of printers, inks, digital front ends, and a comprehensive business and production workflow suite that transforms and streamlines the entire production process, increasing your competitiveness and boosting productivity. Visit www.efi.com for more information.



Nothing herein should be construed as a warranty in addition to the express warranty statement provided with EFI products and services.

The APPS logo, AutoCal, Auto-Count, Balance, BESTColor, BioVu, BioWare, ColorPASS, Colorproof, ColorWise, Command WorkStation, CopyNet, Cretachrom, Cretaprint, the Cretaprint logo, Cretaprinter, Cretaroller, Digital StoreFront, DirectSmile, DocBuilder, DocBuilder Pro, DockNet, DocStream, DSFdesign Studio, Dynamic Wedge, EDOX, EFI, the EFI logo, Electronics For Imaging, Entrac, EPCount, EPPPhoto, EPRegister, EPStatus, Estimate, ExpressPay, FabriVU, Fast-4, Fiery, the Fiery logo, Fiery Driven, the Fiery Driven logo, Fiery JobFlow, Fiery JobMaster, Fiery Link, Fiery Navigator, Fiery Prints, the Fiery Prints logo, Fiery Spark, FreeForm, Hagen, Inkintensity, Inkware, LapNet, Logic, Metrix, MicroPress, MiniNet, Monarch, OneFlow, Pace, Pecas, Pecas Vision, PhotoXposure, PressVu, Printcafe, PrinterSite, PrintFlow, PrintMe, the PrintMe logo, PrintSmith, PrintSmith Site, PrintStream, Print to Win, Prograph, PSI, PSI Flexo, Radius, Remoteproof, RIPChips, RIP-While-Print, Screenproof, SendMe, Sincolor, Splash, Spot-On, TrackNet, UltraPress, UltraTex, UltraVu, UV Series 50, VisualCal, VUTEk, the VUTEk logo, and WebTools are trademarks of Electronics For Imaging, Inc. and/or its wholly owned subsidiaries in the U.S. and/or certain other countries.

All other terms and product names may be trademarks or registered trademarks of their respective owners, and are hereby acknowledged.