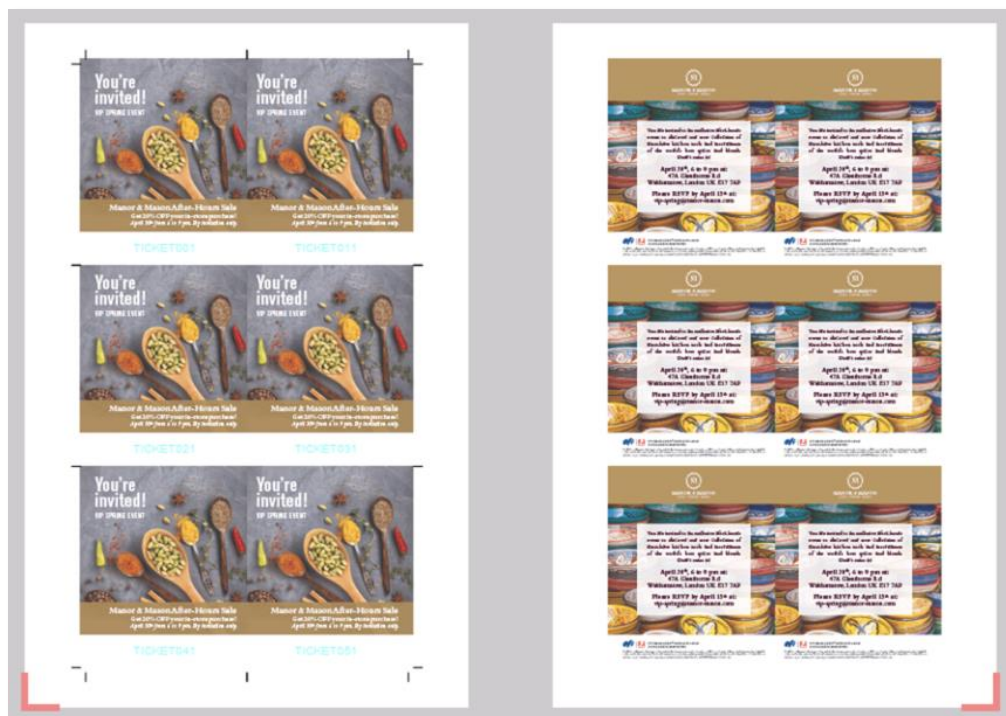


How-to: Create event tickets with unique numbers



Feature overview

Fiery® JobMaster™ is an advanced PDF-based makeready solution that helps operators be more productive on complex document preparation tasks. Makeready of long, complex jobs require the ability to apply different page number sequences or formats to the multiple sections in a document. The expanded page numbering tool in Fiery JobMaster includes the ability to create unique numbering sequences for one or multiple sections, using a combination of custom texts, formats and macros.

Objectives

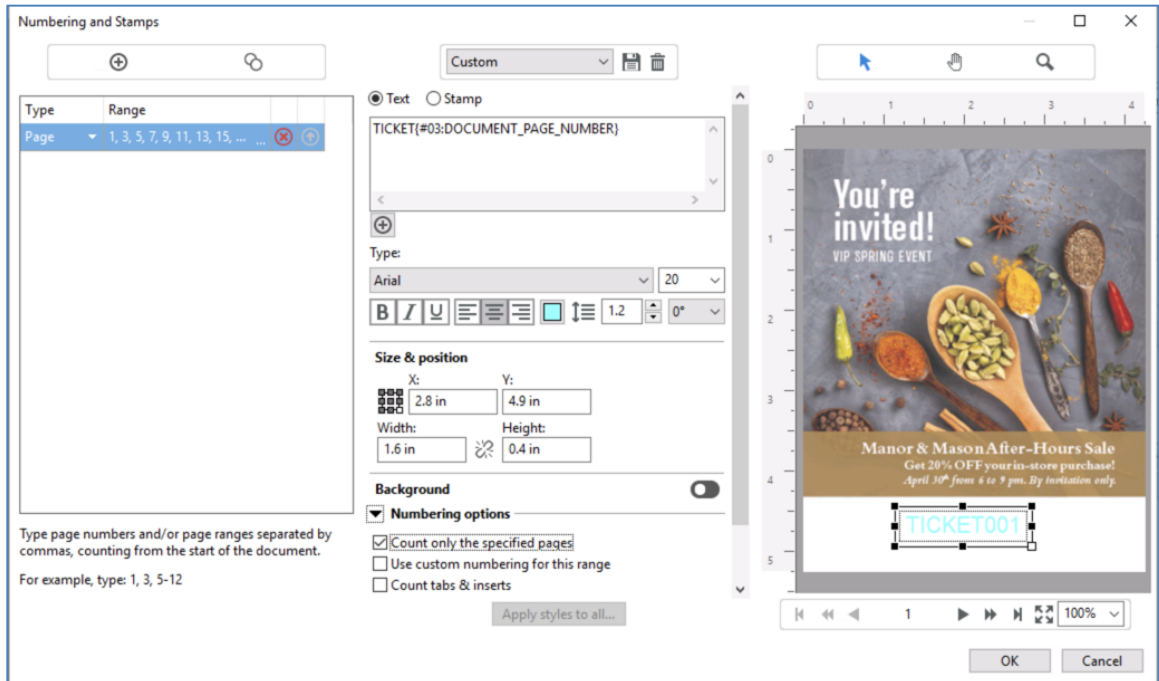
- Insert incremental ticket numbering
- Create N-up layout with Fiery Impose

Additional resources


For additional software downloads, training resources, and more, go to [Fiery Online Resources](#).

Before you begin

- Open Fiery Command WorkStation® 6.7 or newer. Connect to a Fiery Driven™ printer running Fiery FS500 / FS500 Pro system software or newer.
 - For the updated list of supported printers, go to fiery.efi.com/jobmaster/supported-printers.
- To request the free 30-day trial for Fiery JobMaster and Fiery Impose, go to: fiery.efi.com/free-trials.
- Activate the Fiery JobMaster and Fiery Impose licenses on the computer running Command WorkStation.
- Place the sample file, **MnM_postcard_SAMPLE.pdf**, in the Fiery server HELD queue. Drag the file to the Command WorkStation HELD list or use the Command WorkStation Import menu option.
- Ensure the printer and Fiery server have been calibrated before printing any output.

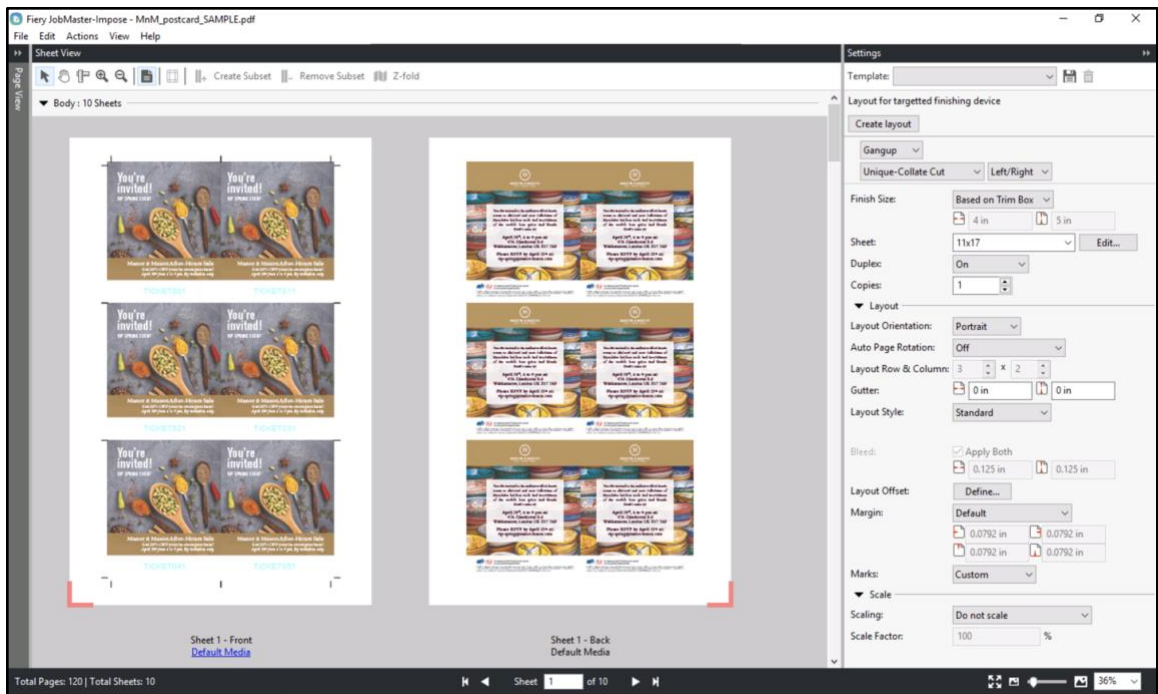


Insert incremental ticket numbering

1. Select the **MnM_postcard_SAMPLE.pdf** file in the Command WorkStation HELD list. Then right-click to select **JobMaster**.
2. Go to **Edit>Duplicate Job** and type the amount of **60** copies. Confirm with **OK**.
3. Go to **Edit>Select Odd Pages**.
4. Right-click on one of the selected odd pages and select **Edit Numbering and Stamps** or go to **Actions > Edit Numbering and Stamps**.
5. The Page Numbers & Stamping window will open.
6. Click the **Add Range**  icon to create a new page range.
7. Leave the range Type as **Page**.
8. In the **Text** field, position the cursor in front of the default text, **{#DOCUMENT_PAGE_NUMBER}**.
 - a. Enter the text to insert before the number. For this example, type **TICKET**.
 - b. Move the cursor after the pound symbol, and enter the numbers to precede each ticket number. For this example, enter **03**: This will insert two zeros in front of the first ticket number. In this example, the first ticket is numbered 001.
 - c. The Text field should now display **TICKET {#03:DOCUMENT_PAGE_NUMBER}**.

9. By default, the page number will be placed in the lower right corner. Use the **Select** icon to move the text box. For precise positioning go to **Size & Position** and define the X and Y values:
 - a. **X = 73mm or 2.8 inches**
 - b. **Y = 125mm or 4.9 inches**
10. Increase the field size so all the inserted number text is visible. Set the following values:
 - a. **Width = 40mm or 1.6 inches**
 - b. **Height = 9mm or 0.4 inches**
11. In the Type area, change the font, size, color and alignment. For this example, select **Arial, Bold**, size **20**, color **Cyan** and **center align**.
12. In the Numbering options area, select the **Count only the specified pages** check box.
13. Navigate using the double arrows to scroll through several pages and check to see that the number increments are accurate.
14. Click the **disk** icon to name and save these settings as a preset for future jobs. For this example, type **Ticket Numbering** and click **OK**.
15. Click **OK** when done to close Numbering and Stamps.

In the next section, you will use Fiery Impose to create an N-up imposition template.



Create N-up layout with Fiery Impose

1. In the Settings pane, change the product intent from Compose to **Gangup** and then select **Unique-Collate cut>Left & Right**.
2. For Finish Size, select **Based on Trim Box** to honor the existing trim box of the PDF. You will be prompted that Changing the Finish Size will reset the Bleed values. Click **OK** to close the window and continue with the layout.
3. For Sheet, select **11x17** or **A3**.
4. Set Duplex to **On**.
5. In the Layout area, set the following options:
 - a. Layout Orientation: **Portrait**
 - b. Marks: Click **Define** and select the **Print trim marks** and **Print mark on front surface only** checkboxes. Click **OK** to close the Marks window.
6. Click the **disk icon** to save and name this template for future use. Then click **OK** to close.
7. Save and name the job. Click **File > Save** and save as a regular imposed job. Then click **OK** when done.
8. Click **File > Exit** or click the red **X** located in the upper right corner to close Fiery Impose.
9. The tickets are ready for printing.

We develop breakthrough technologies for the manufacturing of signage, packaging, textiles, ceramic tiles, building materials and personalized documents, with a wide range of printers, inks, digital front ends, and a comprehensive business and production workflow suite that transforms and streamlines the entire production process, increasing your competitiveness and boosting productivity. Visit www.efi.com for more information.



Nothing herein should be construed as a warranty in addition to the express warranty statement provided with EFI products and services.

The APPS logo, AutoCal, Auto-Count, Balance, BESTColor, BioVu, BioWare, ColorPASS, Colorproof, ColorWise, Command WorkStation, CopyNet, Cretachrom, Cretaprint, the Cretaprint logo, Cretaprinter, Cretaroller, Digital StoreFront, DirectSmile, DocBuilder, DocBuilder Pro, DockNet, DocStream, DSFdesign Studio, Dynamic Wedge, EDOX, EFI, the EFI logo, Electronics For Imaging, Entrac, EPCount, EPPPhoto, EPRegister, EPStatus, Estimate, ExpressPay, FabriVU, Fast-4, Fiery, the Fiery logo, Fiery Driven, the Fiery Driven logo, Fiery JobFlow, Fiery JobMaster, Fiery Link, Fiery Navigator, Fiery Prints, the Fiery Prints logo, Fiery Spark, FreeForm, Hagen, InkIntensity, Inkware, LapNet, Logic, Metrix, MicroPress, MiniNet, Monarch, OneFlow, Pace, Pegasus, Pegasus Vision, PhotoXposure, PressVu, Printcafe, PrinterSite, PrintFlow, PrintMe, the PrintMe logo, PrintSmith, PrintSmith Site, PrintStream, Print to Win, Prograph, PSI, PSI Flexo, Radius, Remoteproof, RIPChips, RIP-While-Print, Screenproof, SendMe, Sincolor, Splash, Spot-On, TrackNet, UltraPress, UltraTex, UltraVu, UV Series 50, VisualCal, VUTEk, the VUTEk logo, and WebTools are trademarks of Electronics For Imaging, Inc. and/or its wholly owned subsidiaries in the U.S. and/or certain other countries.

All other terms and product names may be trademarks or registered trademarks of their respective owners, and are hereby acknowledged.