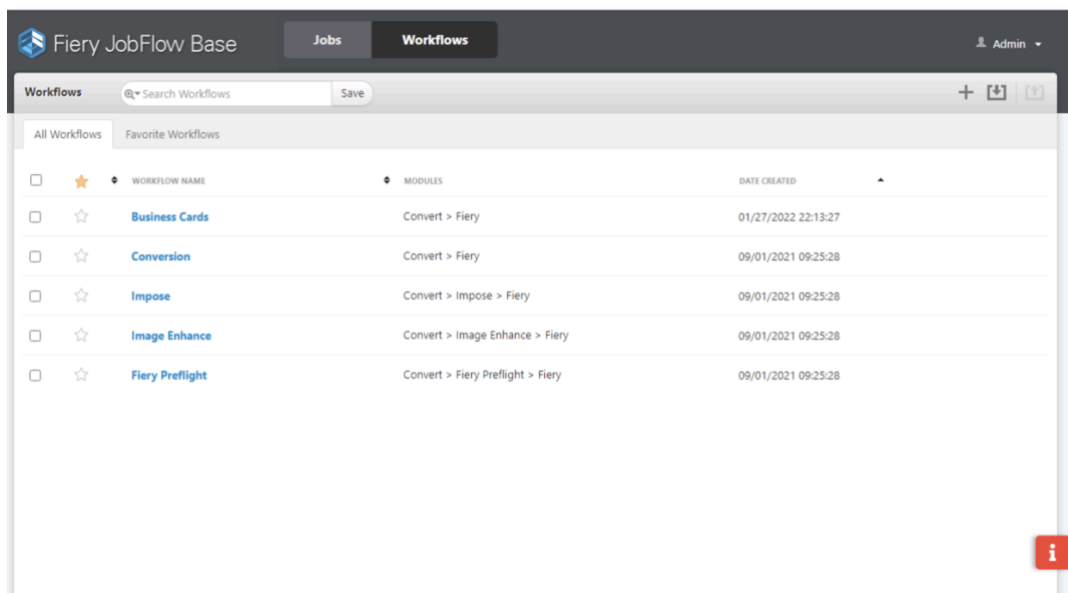


# How-to: Automate job submission with Fiery tools



## Feature overview

Fiery® Command WorkStation® administrators can create and share Server Job Presets to automate selecting Job Properties for commonly used applications, saving time and maximizing productivity.

Administrators can save, edit, publish and delete Server Presets from the Command WorkStation Device Center, so other users can access the centrally stored presets through workflows such as Virtual Printers, Hot Folders, Job Properties, print drivers and Fiery JobFlow™.

Fiery Virtual Printers enable production print administrators to create a specific configuration and present it to users as a printer with a specific name on their desktop. For example, a user who prints training manuals on a regular basis could simply print to a printer named —Training Manual, greatly reducing errors in job setup.

Fiery Hot Folders provide the user with a simple and automated method of sending documents to a Fiery server. Users can copy or simply drop documents into Hot Folders. In this workflow, jobs are routed to the Fiery server with job ticketing instructions like PPD overrides, imposition attributes and file format conversions.

Fiery JobFlow automates job preparation steps in prepress workflows to produce ready-to-print files. This easy-to-use print workflow automation software increases productivity and reduces costs.

## Objectives

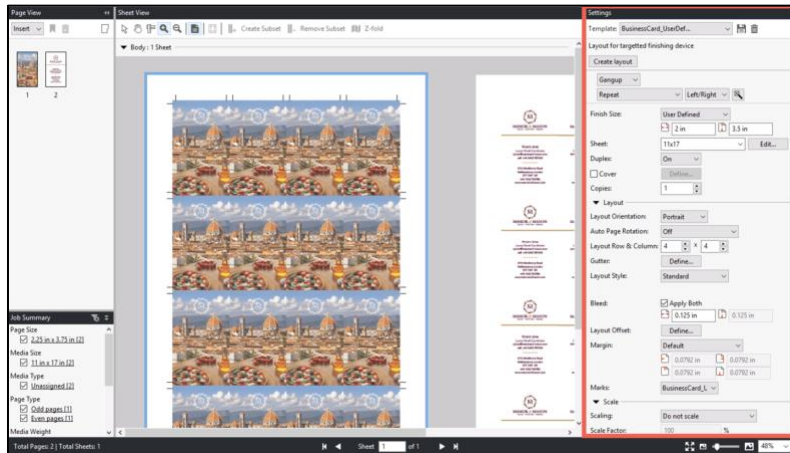
- Create a business card imposition layout.
- Create a new Server Preset.
- Create a new Virtual Printer to apply a Preset.
- Create a new Hot Folder to apply a Preset.
- Apply an automated workflow in Command WorkStation.
- Apply an automated workflow with Fiery JobFlow.

## Additional resources

For additional software downloads, training resources, and more, go to [Fiery Online Resources](#).

## Before you begin

- Open Fiery Command WorkStation® 6.7 or newer. Connect to a Fiery Driven™ printer running Fiery FS500 / FS500 Pro system software or newer.
- Activate the Fiery Impose license on the computer running Command WorkStation
- To request a free 30-day trial for Fiery Impose, go to: <http://fiery.efi.com/impose/freetrial30>.
- Install Fiery Hot Folders on the computer running Command WorkStation.
- Install the free Fiery JobFlow Base application using Fiery Software Manager.
- To request a free 30-day trial for Fiery JobFlow, go to: <http://www.efi.com/fieryjobflow-30day-trial/>
- Place the sample file: **MnM\_business\_card\_portrait\_SAMPLE.pdf** in the Fiery server HELD queue by dragging the file to the Command WorkStation HELD list or use the Command WorkStation Import menu option.
- Ensure the printer and Fiery server have been calibrated before printing any output.



## Create a business card imposition layout

1. Select the **MnM\_business\_card\_portrait\_SAMPLE.pdf** file in the Command WorkStation **HELD** list. Then right-click and select **Impose**.
2. In the Impose window, select **Gangup** for the product intent in the Settings pane.
3. Below Gangup, select Repeat>Left/Right.
4. For the Finish Size option, select **User Defined**. You will be prompted that Changing the Finish Size will reset the Bleed value. Click OK to close the window and continue with the layout.

*The User Defined Finish Size imposition in Fiery Impose honors the trim-box finish option in PDF files. With this enhancement, Fiery Impose templates with User Defined Finish Size settings can use those templates in any job submission method or workflow including Fiery Hot Folders, Virtual Printers, Job Properties and Server Presets.*

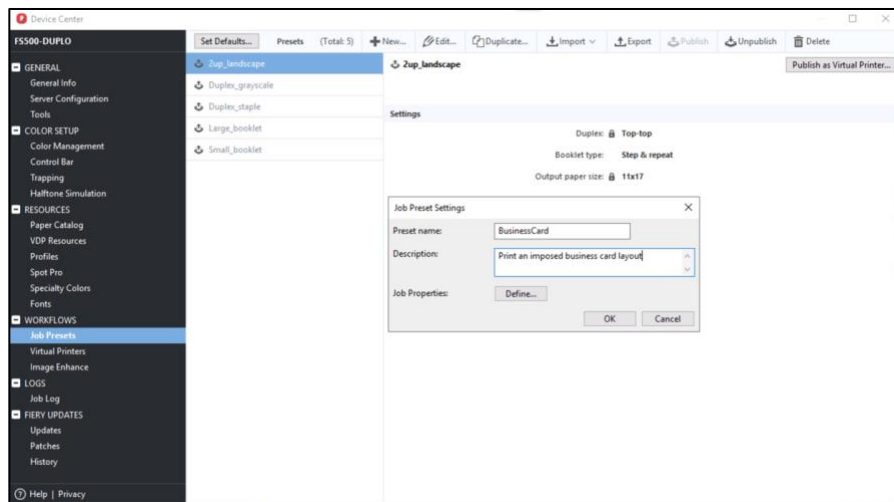
5. For the Sheet, select **11x17** or **A3**.
6. For Duplex, select **On**.
7. In the Layout area, select the following options:
  - a. Layout Orientation: **Portrait**.
  - b. Row & Column: **4 x 4**
8. For Gutter, click **Define**.
9. Enter **0.25 inch** click **Apply All** and **OK**. The gutter will show a 0.25-inch white space between each card in the Sheet View pane.
10. Notice the Bleed Value was automatically set when the job was opened in Impose with the User Defined option set as default from the Command WorkStation preferences.

*Impose populates the finish size values from the trim size value and automatically populates the bleed value from the document, once **User Defined** is enabled.*

11. In the Marks area, click **Define**.
12. In the Trim tab, select the **Print trim marks** check box.

13. Select the **Print mark on front surface only** check box. Then click **OK** to close.
14. To save your settings as a template, click the **disk icon**. For this example save as: **BusinessCard\_UserDefined**. Then click **OK**.
15. Select **Exit** from the file menu, or click the red **X** located in the corner to close Impose.
16. When the Save window opens, select **No** if you do not want to save your imposed job.

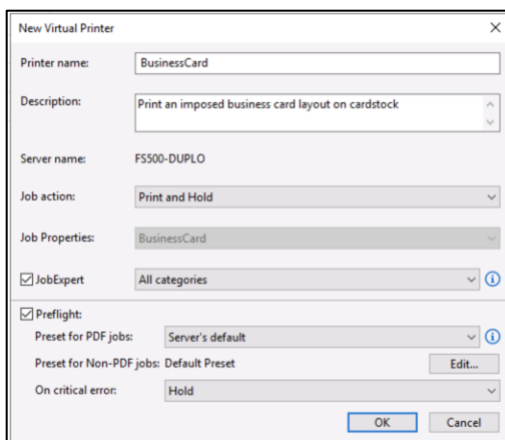
In the next section, you will apply this template to a Server Preset so you can use it to automate future similar jobs.



## Create a new Server Preset

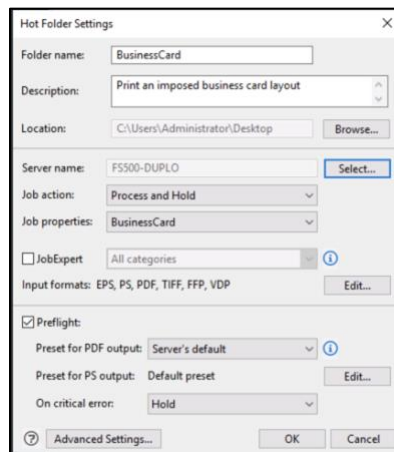
1. In Command WorkStation menu, go to **Server > Device Center**, and then under **Workflows > Job Presets** option.
2. Click **New** to create a new Preset.
3. Enter a Preset name and Description.
4. For this example, type **BusinessCard**.
5. The Description field allows you to note additional characteristics. For this example, type **Print an imposed business card layout**.
6. For Job Properties, click **Define**.
7. Click the **Layout** icon.
8. Click **Impose**.
9. Select the **BusinessCard\_UserDefined** template you created earlier. Then click **OK** when done.
10. Click **OK** to apply the Job Properties.

In the next section, the preset will be applied to a Virtual Printer.



### Create a Virtual Printer to apply a Preset

1. From the Presets window, select the **BusinessCard Preset**. Then click **Publish as Virtual Printer**.
  2. The New Virtual Printer window will open and allow additional settings to be applied.
  3. Enter a Printer name. For this example, type **BusinessCard**.
  4. The Description field allows you to note additional Virtual Printer characteristics.
  5. For Job action, select **Print and Hold**.
  6. Select the **Preflight** check box. For this example use the **Server's default** Preflight settings for PDF jobs.
  7. Click **OK** when you have completed all the settings.
  8. After saving, a message will appear to indicate that the Virtual Printer has been created successfully.
  9. Select **Virtual Printers** in Device Center Workflows to see the newly created Virtual Printer.
  10. To create an additional Virtual Printers, click **New**.
  11. In the New Virtual Printer window, enter a name for the Virtual Printer that reflects its function.
  12. **Description** allows for additional characteristics to be noted.
  13. Select the **Job Action**.
  14. For Job Properties, click Define. Alternatively you can choose a job preset from the drop-down list. Then assign the print options to apply.
  15. Click **Lock All**. This will prevent users from overriding the pre-defined job properties.
  16. Click **OK** to apply the Job Properties.
  17. Click **OK** when done to save and publish the new virtual printer.
  18. Users may now install the Virtual Printer driver to submit jobs.
  19. Consult the Fiery user documentation for information on installing & using the Virtual Printer driver.
- In the next section, the preset will be applied to a Hot Folder.



### Create a new Hot Folder to apply a Preset

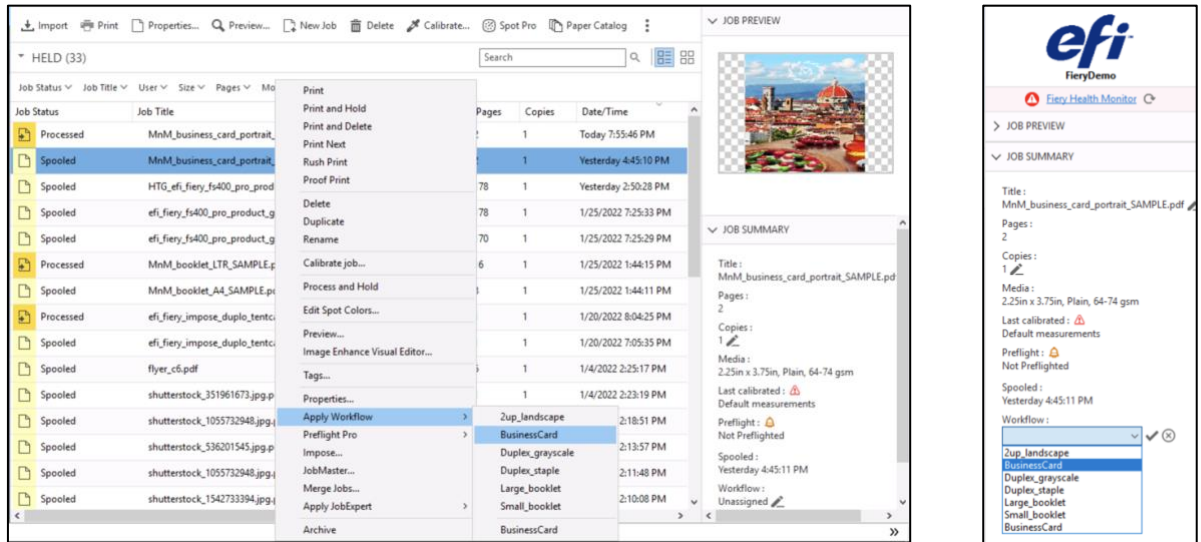
1. Open the Fiery Hot Folders application.
2. Click the **New** icon in the toolbar to create a new Hot Folder.
3. Enter a name for the new folder. For this example, type **BusinessCard**.
4. The **Description** field allows you to note additional Hot Folder characteristics.
5. The **Location** field displays the default location where the new Hot Folder will be created. To change the location, click Browse. For this example, use the **default** location, which is the **desktop**.
6. Click **Select** to select the Fiery server.
7. When the **Connect to Server** window opens, use the search icon (magnifying glass) to find a Fiery server on your network. Select the **Fiery server** you will use to receive jobs submitted with Hot Folders. Then click **Connect**.

*If the Fiery server you want to use is located on a different TCP/IP subnet, select the search menu and select either Subnet or IP Range to expand the search beyond the local TCP/IP subnet.*

8. Assign the **Job Action**. For this exercise select **Process and Hold**.
9. For **Job Properties**, select the **Server Preset**. For this example, select **BusinessCard**.

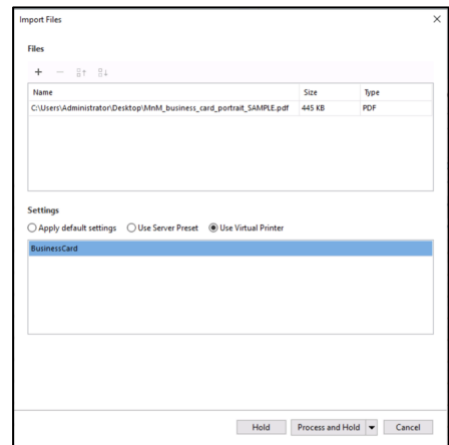
*The **User Defined** finish size is not supported with the VDP input format. So, click the Input formats **Edit** button and **deselect** the **VDP** option from the Input Formats list and click **OK** to save and close.*

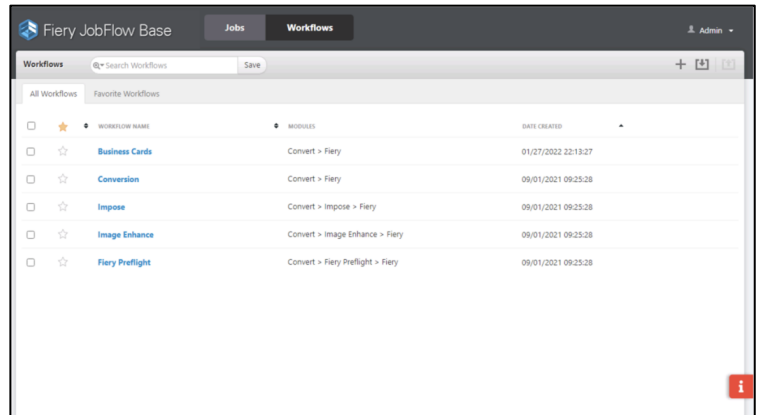
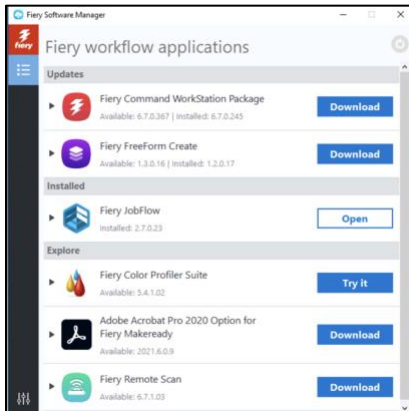
10. Select the **Preflight** check box.
11. For the On Critical Error option, select **Hold**.
12. Click **OK** to apply all the settings to the hot folder and to close the Fiery Hot Folder Console.
13. Locate and select the **MnM\_business\_card\_portrait\_SAMPLE.pdf** file on the computer running Fiery Hot Folders.
14. Right-click and select **Download to Hot Folder**. Then select the Hot Folder you created. Or drag the **MnM\_business\_card\_portrait\_SAMPLE.pdf** file on to the **BusinessCard** Hot Folder.



## Apply an automated workflow in Command WorkStation



1. **Option 1:** Select the MnM\_business\_card\_portrait\_SAMPLE.pdf file in the Command WorkStation HELD list. Then right-click to select **Apply Workflow > BusinessCard**.
2. **Option 2:** Select the MnM\_business\_card\_portrait\_SAMPLE.pdf file in the Command WorkStation HELD list. In the **Preview** area click **Workflow pencil icon**, and assign the **BusinessCard** workflow to the job.
3. **Option 3:** Click the **Import** icon in the toolbar. Or **File > Import**.
  - a. Locate the **MnM\_business\_card\_portrait\_SAMPLE.pdf** file.
  - b. Under **Settings**, click **Use Server Preset** or **Use Virtual Printer**.
  - c. Select the **Business Card** Server Preset or Virtual Printer.
  - d. Select the job action to apply.

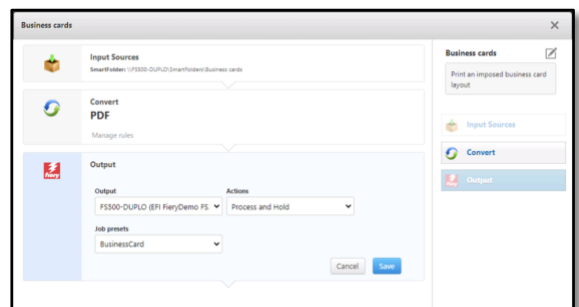




## Apply an automated workflow using Fiery JobFlow

The Fiery JobFlow application is a server-based application, which can be installed on a Windows operating system using the Fiery Software Manager. After installation you can access the application via any browser. For this exercise, we will be using the free Fiery JobFlow Base application.

1. Open Fiery JobFlow by **double-clicking** the application icon.
2. Login with your username and password.
3. In the Fiery JobFlow application go to the **Workflows** view.
4. Click on the **plus sign**  in the right upper corner to add a new workflow.
5. In the **Create New Workflow** window type in the workflow name **Business cards** and any description you want to add. Confirm with **Create**.
6. Highlight the **Output** area and choose **Edit** .
7. Define the output device, the Action for this workflow and assign the created Preset **BusinessCard**, which will apply the Fiery Impose template and any other properties, such as Media and/or finishing settings defined in this Preset.
8. Confirm with Save.
9. The created workflow is now the first one in the list and ready to use. **Drag and Drop** the file into the workflow.
10. Change to the **Jobs** view at the top of the Fiery JobFlow Base window to show the progress of the file.
11. Fiery JobFlow allows you to add as many workflows as needed, helping to automate the printing process by eliminating waste.





We develop breakthrough technologies for the manufacturing of signage, packaging, textiles, ceramic tiles, building materials and personalized documents, with a wide range of printers, inks, digital front ends, and a comprehensive business and production workflow suite that transforms and streamlines the entire production process, increasing your competitiveness and boosting productivity. Visit [www.efi.com](http://www.efi.com) for more information.



Nothing herein should be construed as a warranty in addition to the express warranty statement provided with EFI products and services.

The APPS logo, AutoCal, Auto-Count, Balance, BESTColor, BioVu, BioWare, ColorPASS, Colorproof, ColorWise, Command WorkStation, CopyNet, Cretachrom, Cretaprint, the Cretaprint logo, Cretaprinter, Cretaroller, Digital StoreFront, DirectSmile, DocBuilder, DocBuilder Pro, DockNet, DocStream, DSFdesign Studio, Dynamic Wedge, EDOX, EFI, the EFI logo, Electronics For Imaging, Entrac, EPCount, EPPPhoto, EPRegister, EPStatus, Estimate, ExpressPay, FabriVU, Fast-4, Fiery, the Fiery logo, Fiery Driven, the Fiery Driven logo, Fiery JobFlow, Fiery JobMaster, Fiery Link, Fiery Navigator, Fiery Prints, the Fiery Prints logo, Fiery Spark, FreeForm, Hagen, Inkintensity, Inkware, LapNet, Logic, Metrix, MicroPress, MiniNet, Monarch, OneFlow, Pace, Pecas, Pecas Vision, PhotoXposure, PressVu, Printcafe, PrinterSite, PrintFlow, PrintMe, the PrintMe logo, PrintSmith, PrintSmith Site, PrintStream, Print to Win, Prograph, PSI, PSI Flexo, Radius, Remoteproof, RIPChips, RIP-While-Print, Screenproof, SendMe, Sincolor, Splash, Spot-On, TrackNet, UltraPress, UltraTex, UltraVu, UV Series 50, VisualCal, VUTEk, the VUTEk logo, and WebTools are trademarks of Electronics For Imaging, Inc. and/or its wholly owned subsidiaries in the U.S. and/or certain other countries.

All other terms and product names may be trademarks or registered trademarks of their respective owners, and are hereby acknowledged.