

How-to: Print a perfect bound booklet



Feature overview

The perfect binding method, also known as paperback, consists of signatures or individual leaves between covers of heavier paper. It's all glued together at the spine with a strong, flexible adhesive along the edges of the text sheets and a wraparound cover. Text can be printed on the spine, if desired.

This type of binding is economical because it is automated. It gives the book a professional appearance at a low cost.

The Fiery® Booklet Maker is the imposition tool in Job Properties that allows users to print multiple pages of a print job, from any application, in a booklet style — without the need for more advanced imposition programs. Booklet Maker provides a visual and interactive way to specify the page number of the source document for cover paginations. So you can correlate the correct page numbers with the correct cover pages.

Objectives

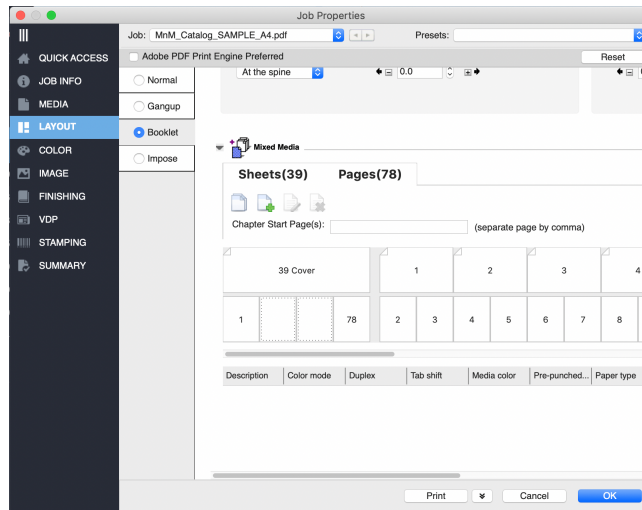
- Create a perfect bound booklet layout.
- Apply perfect binder finishing and other job properties.

Additional resources

For additional software downloads, training resources, and more, go to [Fiery Online Resources](#).

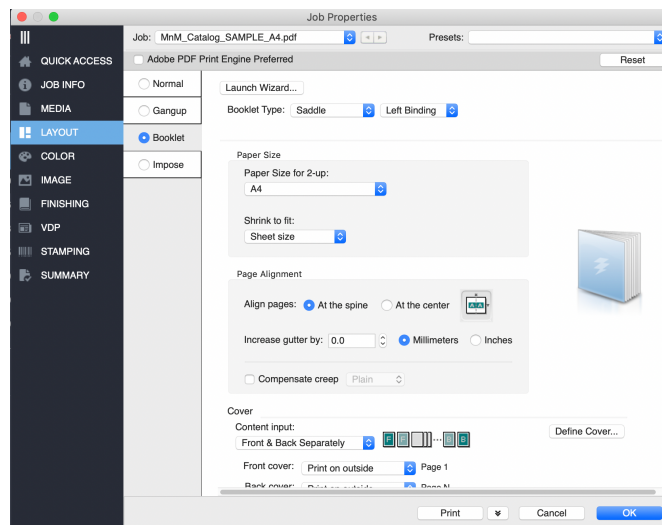
Before you begin

- Open Fiery Command WorkStation® 6.7 or newer. Connect to a Fiery Driven™ printer running Fiery FS500/FS500 Pro system software or newer.
- Place the sample file, **MnM_booklet_posters_LTR_SAMPLE.pdf** or **MnM_booklet_posters_A4_SAMPLE.pdf** in the Fiery server HELD queue. Drag the file to the Command WorkStation HELD list, or use the Command WorkStation Import Job menu option.
- Make sure that the printer and the Fiery server have been calibrated before printing any output.



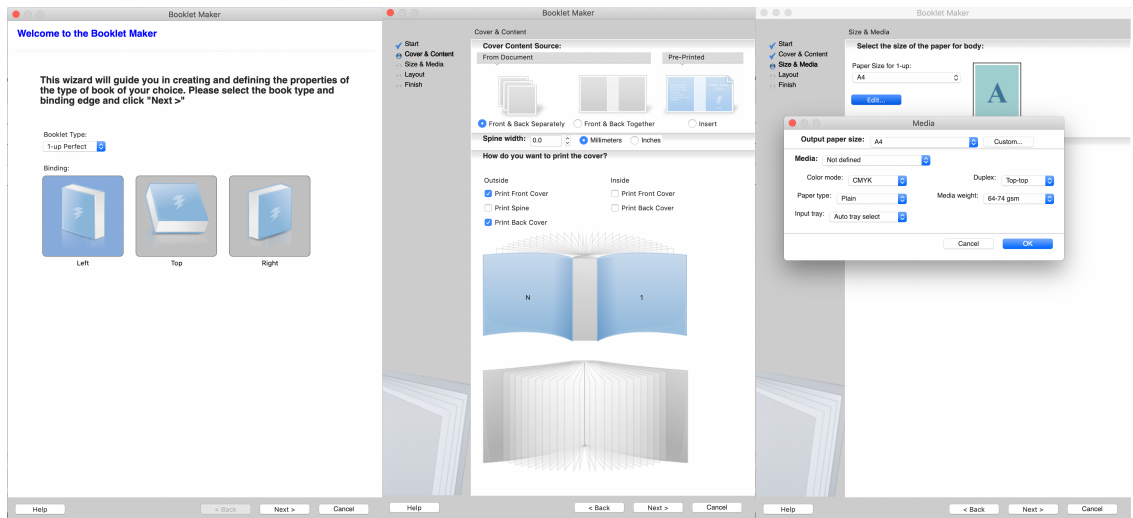
Create a perfect-bind booklet layout

1. Select the **MnM_Catalog_SAMPLE_LTR.pdf** or **MnM_Catalog_SAMPLE_A4.pdf** file in the Command WorkStation Held list. Then right-click and select **Properties**.
2. In the Job Properties window, click the **Layout** icon. Then click **Booklet**.

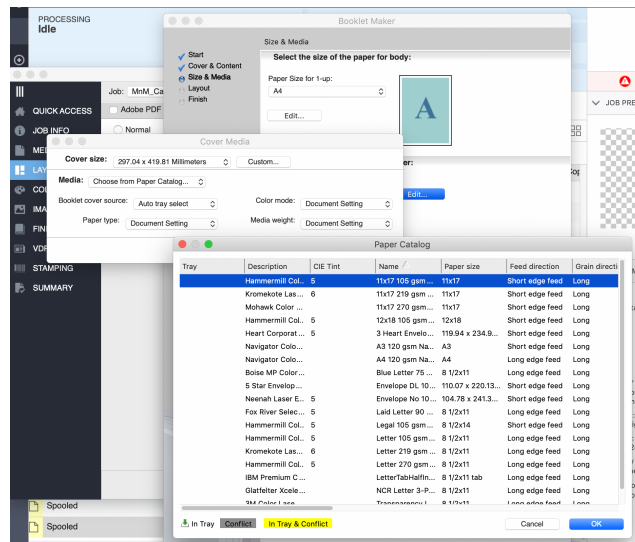


3. To create a booklet using the Booklet Maker wizard, click **Launch Wizard**.

How-to: Print a perfect bound booklet



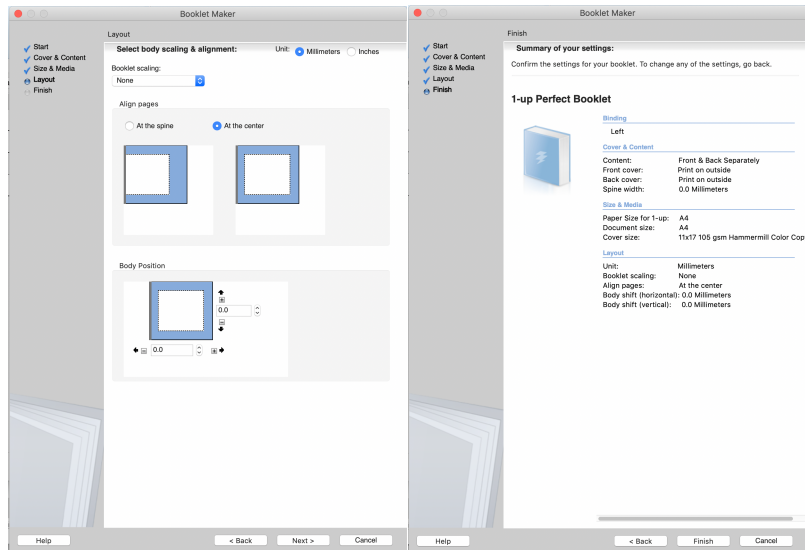
4. Select the Booklet Type. For this example, select **1-up Perfect** and Binding **Left**. Then click **Next** to continue.
5. For the Cover Content Source, From Document, click **Front & Back Separately**.
6. For the Outside cover area, keep the default settings for **Print Front Cover** and **Print Back Cover**. Then click **Next** to continue.
7. For Size and Media, select the body **Paper Size for 1-up**. For this example, select **Letter** or **A4**. Click **Edit** to define the media options, which includes the paper catalog option. Set the Duplex option to **Top-Top**.



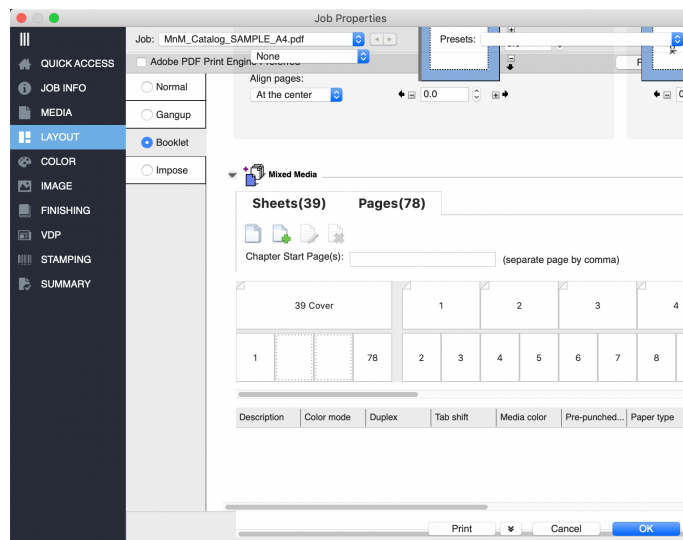
8. Next, select the paper for the cover. For this example, select Cover Size as **11.00 x 17.00** Inches or **11.69 x16.53**. Click **Edit** to define the media options, which includes the paper catalog option.

Custom paper sizes are also supported for the body and cover and can be defined in the Size Selection or by using the Edit option.

9. Click **Next** to continue.



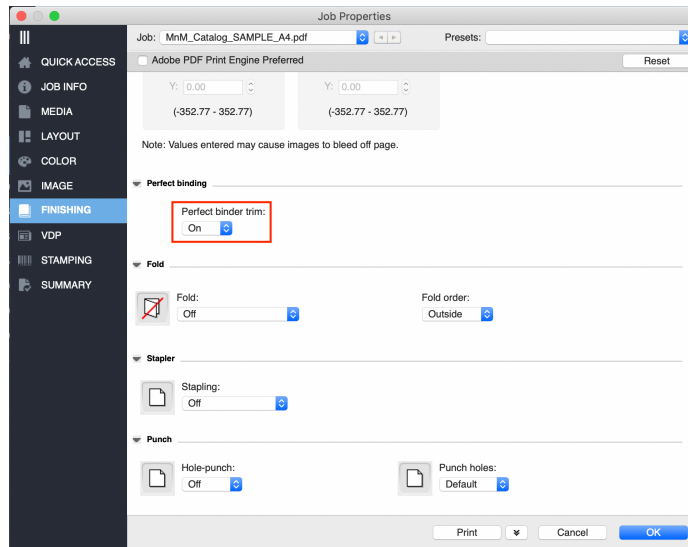
10. In Layout, Align pages, select **At the Center**. Then click **Next** to continue.
11. The Finish window will open. Review the settings and click **Finish** to close the Booklet Maker wizard.



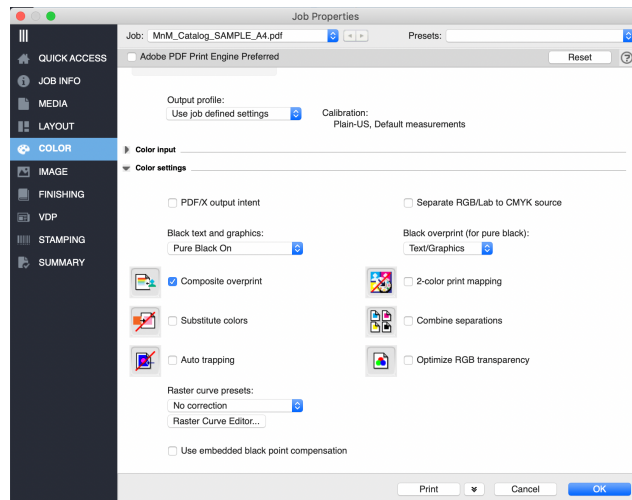
12. Scroll down the Booklet window to view the **Mixed Media** area. The default sheet view displays how each page will print on each sheet. Notice the displayed cover sheet contains pages 1 and 78, printed on the same side.

In the next section, you will you will assign finishing to the booklet.

Apply perfect-binder finishing and other job properties



1. If the printer supports an inline perfect-bind finisher, click the **Finishing** tab.
2. Assign the appropriate options, including **Trim**. Each device will have its own unique settings to correctly complete the booklet
3. If your printer does not have a perfect-bind finisher, the cover and body pages will be printed for offline finishing.



4. Apply any other Job Properties settings you want, such as **Expert Color** settings. Click the **Color** tab to apply expert color settings.
5. Finally, click **Print** button to submit the job to the printer.

We develop breakthrough technologies for the manufacturing of signage, packaging, textiles, ceramic tiles, building materials and personalized documents, with a wide range of printers, inks, digital front ends, and a comprehensive business and production workflow suite that transforms and streamlines the entire production process, increasing your competitiveness and boosting productivity. Visit www.efi.com for more information.



Nothing herein should be construed as a warranty in addition to the express warranty statement provided with EFI products and services.

The APPS logo, AutoCal, Auto-Count, Balance, BESTColor, BioVu, BioWare, ColorPASS, Colorproof, ColorWise, Command WorkStation, CopyNet, Cretachrom, Cretaprint, the Cretaprint logo, Cretaprinter, Cretaroller, Digital StoreFront, DirectSmile, DocBuilder, DocBuilder Pro, DockNet, DocStream, DSFdesign Studio, Dynamic Wedge, EDOX, EFI, the EFI logo, Electronics For Imaging, Entrac, EPCount, EPPhoto, EPRegister, EPStatus, Estimate, ExpressPay, FabriVU, Fast-4, Fiery, the Fiery logo, Fiery Driven, the Fiery Driven logo, Fiery JobFlow, Fiery JobMaster, Fiery Link, Fiery Navigator, Fiery Prints, the Fiery Prints logo, Fiery Spark, FreeForm, Hagen, Inkintensity, Inkware, LapNet, Logic, Metrix, MicroPress, MiniNet, Monarch, OneFlow, Pace, Pecas, Pecas Vision, PhotoXposure, PressVu, Printcafe, PrinterSite, PrintFlow, PrintMe, the PrintMe logo, PrintSmith, PrintSmith Site, PrintStream, Print to Win, Prograph, PSI, PSI Flexo, Radius, Remoteproof, RIPChips, RIP-While-Print, Screenproof, SendMe, Sincolor, Splash, Spot-On, TrackNet, UltraPress, UltraTex, UltraVu, UV Series 50, VisualCal, VUTEk, the VUTEk logo, and WebTools are trademarks of Electronics For Imaging, Inc. and/or its wholly owned subsidiaries in the U.S. and/or certain other countries.

All other terms and product names may be trademarks or registered trademarks of their respective owners, and are hereby acknowledged.