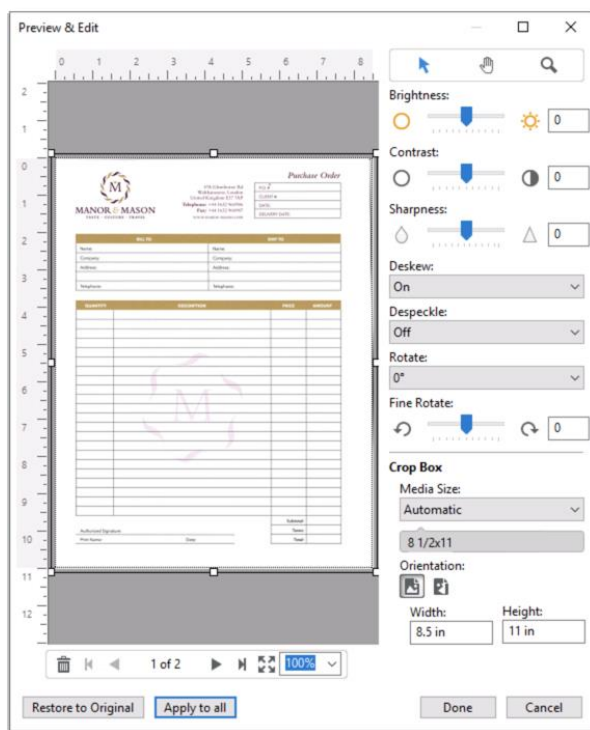


How-to: Scan and import pages with Fiery JobMaster



Feature overview

Fiery® JobMaster™ offers the ability to import scanned pages either using a TWAIN compliant scanner or Fiery Remote Scan, in addition to importing previously scanned pages in PDF or image file formats.

Merging scanned documents with existing electronic documents saves time and the expense of recreating the document in the original application. Using scan import with JobMaster, you can perform image cleanup and deskew functions for a polished look for your document.

Once the scanned pages are inserted in Fiery JobMaster, users can apply further touchups to them without leaving Fiery JobMaster. This capability is possible through integrating with image editing applications such as Microsoft Paint, Preview on Mac, Adobe Photoshop and GIMP, so that you can apply further edits such as moving objects around the page, adding text, and any other editing function supported by the image editor of your choice.

Objectives

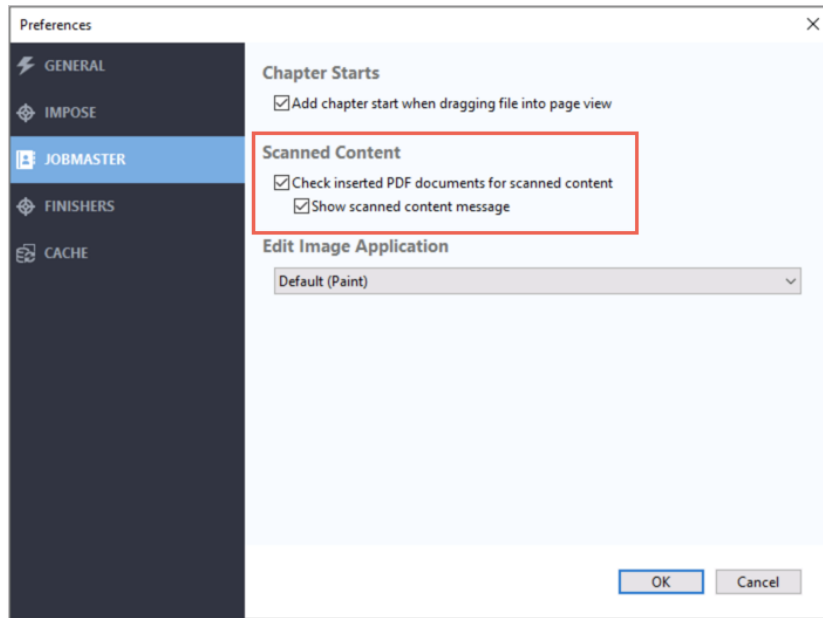
- Create a new job in JobMaster and insert a scanned image
- Import and insert scanned images and PDF files
 - Modify and clean up a scanned image
 - Use Brightness, Contrast, Sharpness,
 - Use the Deskew, Despeckle, Rotate, and Crop tools

Additional resources

For additional software downloads, training resources, and more, go to [Fiery Online Resources](#). Please refer to the document: [Scan and edit pages with Fiery JobMaster](#) for more information.

Before you begin

- Open Fiery Command WorkStation® 6.7 or newer. Connect to a Fiery Driven™ printer running Fiery FS500 / FS500 Pro system software or newer.
 - For the updated list of supported printers go to: fiery.efi.com/jobmaster/supported-printers.
- To request the free 30-day trial for Fiery JobMaster, go to: fiery.efi.com/jobmaster/freetrial30.
- Activate the Fiery JobMaster license on the computer running Command WorkStation.
- Ensure the printer and Fiery server have been calibrated before printing any output.



Setting JobMaster scan preferences

Fiery JobMaster's Preferences for Scanned Content gives you the option to check inserted PDF documents for scanned content. When scanned content is detected in the document, the scan cleanup options will be offered in the Preview and Edit dialog box.

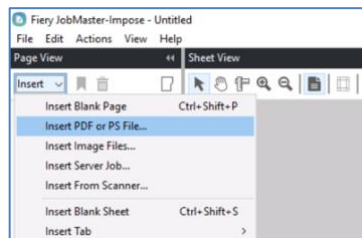
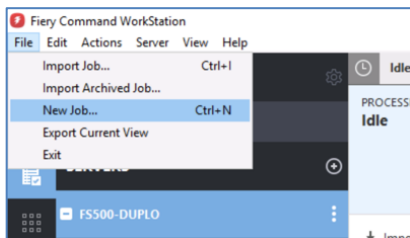
Set up your JobMaster preferences:

1. From the Command WorkStation HELD queue toolbar, select **New Job**.
2. In JobMaster, select **Edit > Preferences** from the top menu.
3. In the left column, select **JobMaster**.
4. Under Scanned Content, select the boxes if you want JobMaster to **Check inserted PDF's for scanned content** or to show an alert message when **Show scanned content** has been detected.

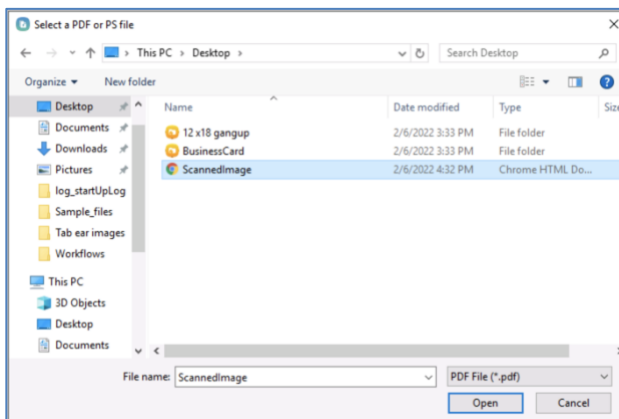
*Note that the settings will be applied the next time JobMaster is started, so **close** the JobMaster application for the settings to take effect. Confirm that you want to close the New Job window without saving the job.*

Insert scanned PDF files

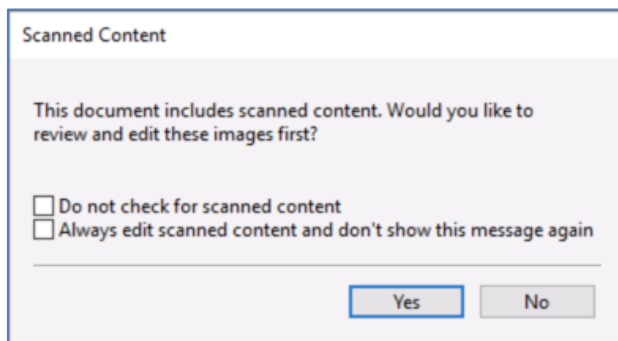
1. Launch Fiery JobMaster by selecting **File > New Job** in Command WorkStation drop-down menu.



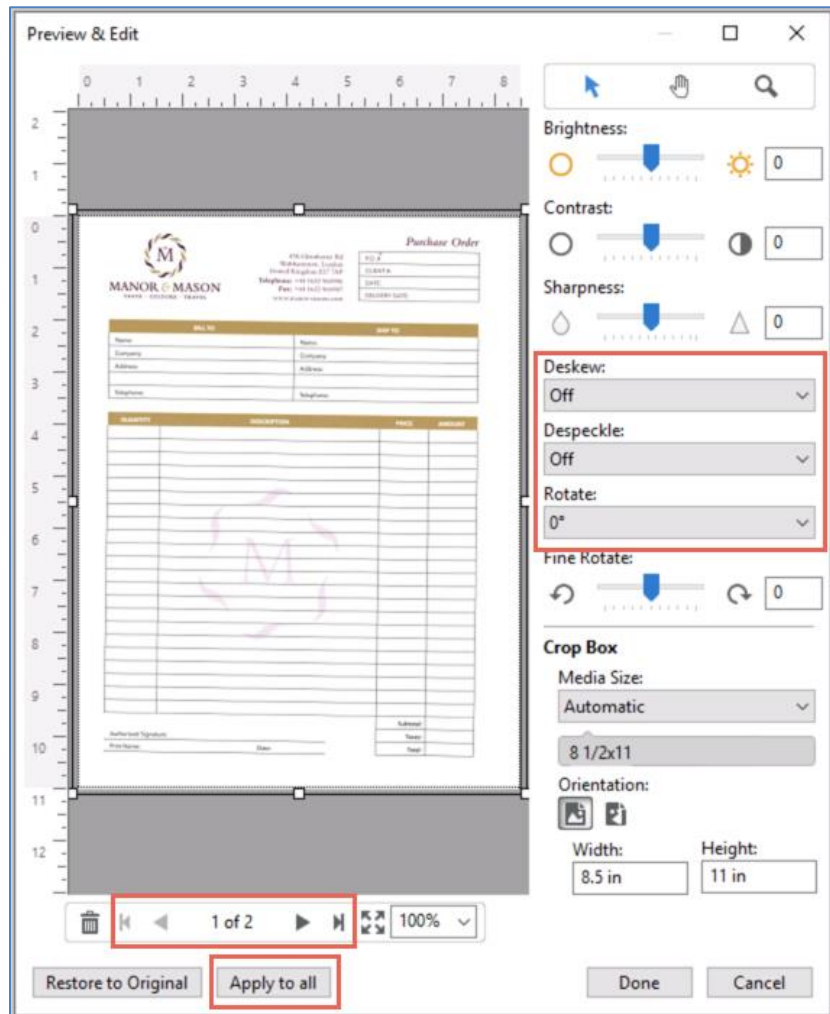
2. Open the **Insert** drop-down menu in the Page View pane. Select **Insert PDF or PS File**, and a standard file explorer window will open.
3. Highlight the sample file **ScannedImage.pdf** and select **Open**.



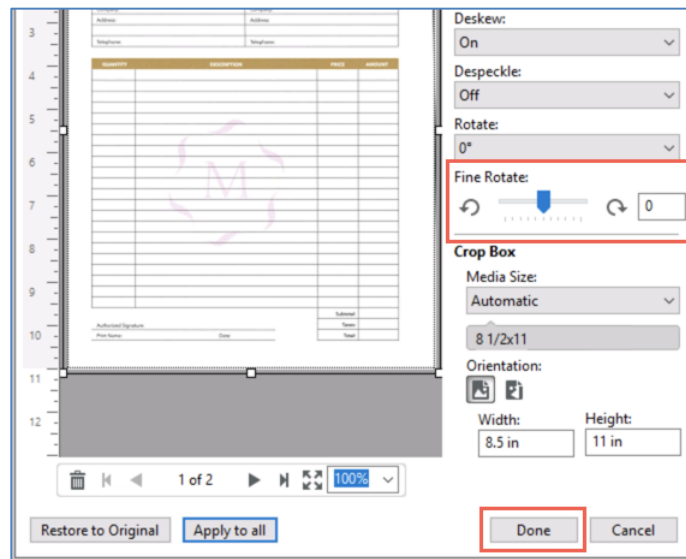
4. Select **Yes** in the Scanned Content dialog box to review and edit these images. Fiery JobMaster automatically detects which pages are scanned pages and will open the **Preview & Edit** window.



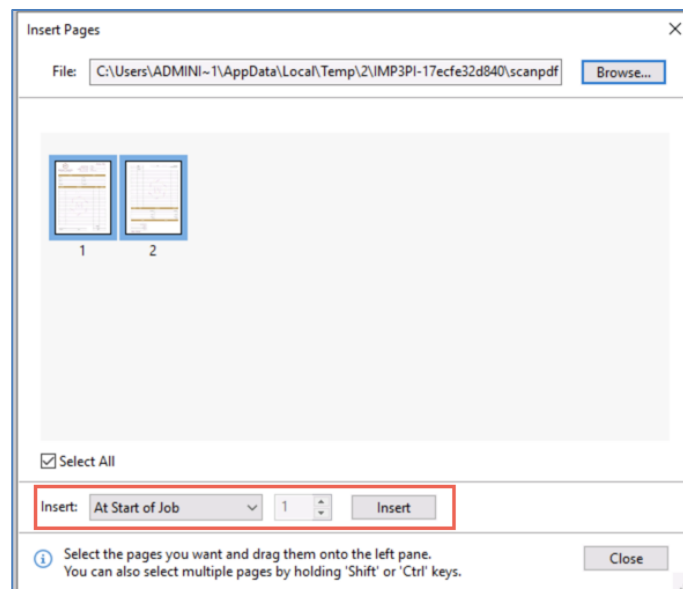
5. Select **Deskew** and choose **On**. To apply the **Deskew** page setting to all the pages in the scan, select **Apply to all**.
6. To confirm that all pages settings will be overwritten for this page, click the **Yes** button. After you have made global changes to all pages, you can continue to correct individual pages. Use the **forward and back arrows** to scroll through the pages.



7. Although selecting the **Deskew** feature will automatically rotate the scan page so that the alignment is horizontally parallel with the target page, some pages may need minor adjustments to the angle. Use the **Fine Rotation** slider to make the correction.



8. Select **Done** to close the **Preview & Edit** feature and automatically open the **Insert Pages** window.
9. The corrected pages will be displayed. Click the **Select All** checkbox to choose all the pages. In the **Insert** section, select **After Page** and set the page number to 1.
10. Click the **Insert** button.

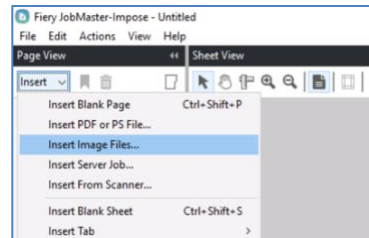
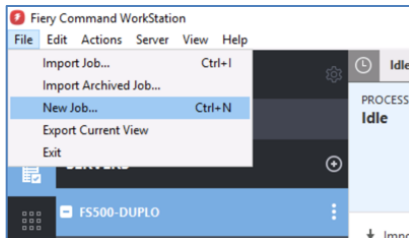


The new content will be placed after the cover page.

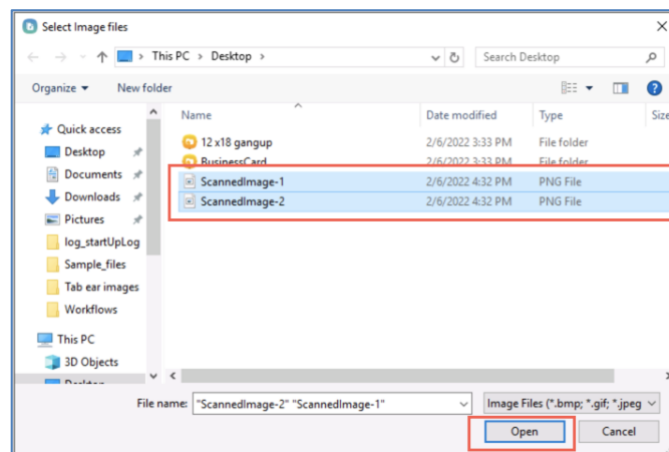
The updated document can be customized further by adding imposition or sheet settings in Fiery Impose and finishing settings in Job Properties.

Insert image files

1. In the Command WorkStation toolbar select **File > New Job**.
2. Select **Insert > Insert Image Files**.



3. Find and highlight the **ScannedImage-1.png** and **ScannedImage-2.png** image files and select **Open**. The Fiery server will automatically detect that this is a scanned image and will open the **Preview & Edit** feature.

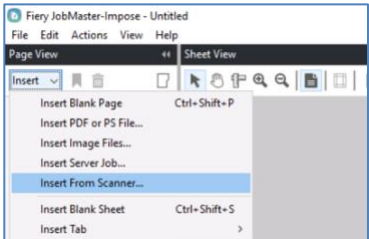
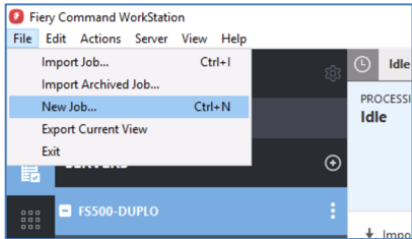


4. Some images may need to be modified before being inserted into the job. **Preview & Edit** tools include Brightness, Contrast, Sharpness, Deskew, Despeckle, Rotate and Fine Rotate controls. Refer to the "**Insert Scanned PDF files**" section and follow steps 5 to 8 for scan cleanup instructions.

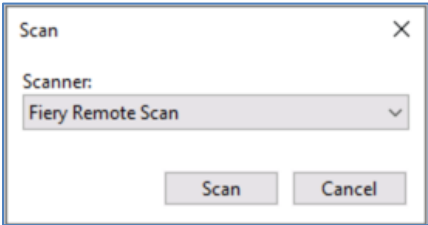
Insert from Scanner:

Insert from Scanner allows you to initiate scans from the printer glass, an automatic document feeder (ADF), or a TWAIN compliant scanner.

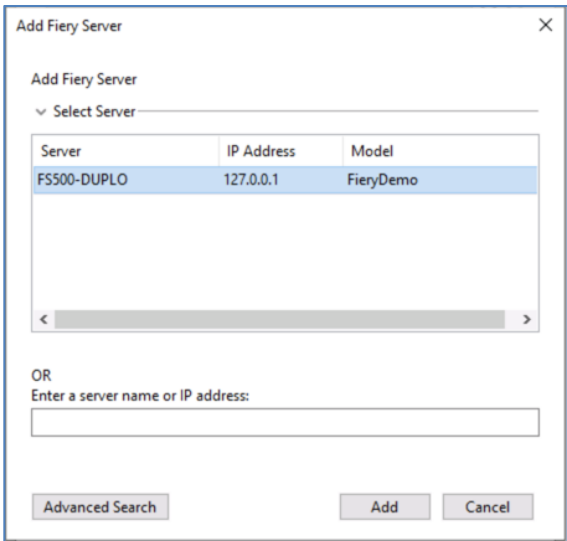
- 1. In the Command WorkStation toolbar, select New Job.
- 2. Select **Insert** and from the drop-down menu **Insert From Scanner**.



- 3. If not selected, choose **Fiery Remote Scan** from the list of scanners and click **Scan**. You can select a different scanner if its TWAIN plug-in is installed on your computer.



- 4. Click the **Choose a Fiery** icon (Plus) to open the Add Fiery Server dialog box.



- 5. To search for a Fiery Server, that is not already listed do one of the following:
 - a. Click the **Advanced Search** button.
 - b. Select IP Range or Subnet to specify a range to search
- 6. Click **Go**. Filter the displayed results by keyword if needed.

Advanced Search

Search: From: To:

IP Range 127.0.0.1 127.0.0.250 Go

Search Results:

Filter by keyword:

Server	IP Address	Model
FS500-DUPLO	127.0.0.1	FieryDemo

OK Cancel

- 7. Select the Fiery Server that you want to use and click **Ok** to confirm.
- 8. With Fiery Remote Scan you can initiate scans from the printer glass or automatic document feeder (ADF). You can also access scan files stored in a mailbox. Select from MAILBOX or SCAN. If choosing SCAN, select your scanning preferences and select the **Scan** blue tab.

Fiery Remote Scan

Fiery Server: FS500-DUPLO

FROM MAILBOX SCAN

Mailbox:

Change Mailbox...

Name	Pages	Size	Date & Time
------	-------	------	-------------

Acquire Close

Fiery Remote Scan

Fiery Server: FS500-DUPLO

FROM MAILBOX SCAN

Source: Platen

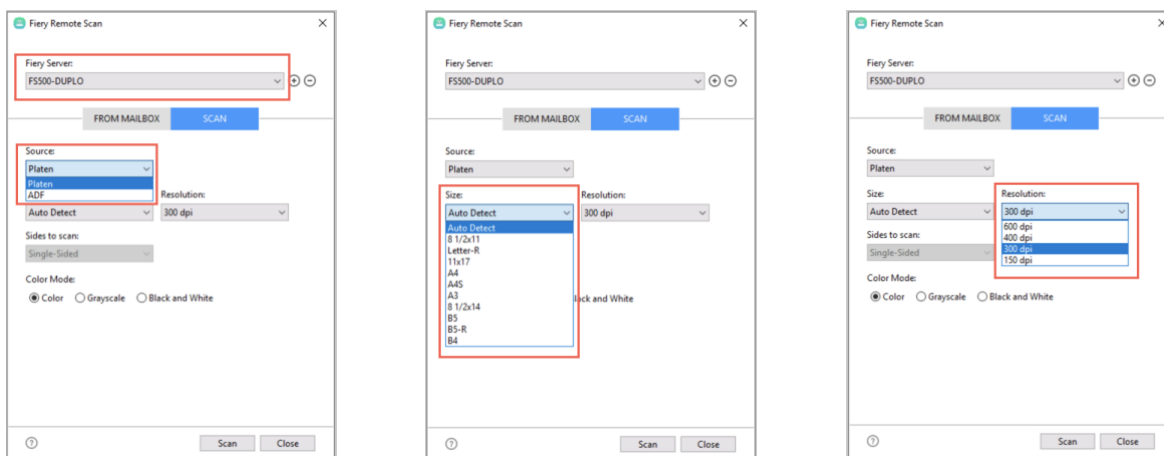
Size: Auto Detect Resolution: 300 dpi

Sides to scan: Single-Sided

Color Mode: ☒ Color ☐ Grayscale ☐ Black and White

Scan Close

9. Select your scanning options and select the **Scan** button.



10. When the scan is complete, the **Preview and Edit** dialog box will open. Use the options in the Scan Preview & Edit window. These options are available on a per page basis. Or use the Apply to All button to apply to all pages in the scan job. Note: Additional pages can also be scanned and added to the existing scan job. Refer to the "Insert Scanned PDF files" section for scan cleanup instructions.

For more information and instructions on configuration of Fiery Remote Scan Please visit www.efi.com.

For additional software downloads, training resources and more, go to resources.efi.com.

We develop breakthrough technologies for the manufacturing of signage, packaging, textiles, ceramic tiles, building materials and personalized documents, with a wide range of printers, inks, digital front ends, and a comprehensive business and production workflow suite that transforms and streamlines the entire production process, increasing your competitiveness and boosting productivity. Visit www.efi.com for more information.



Nothing herein should be construed as a warranty in addition to the express warranty statement provided with EFI products and services.

The APPS logo, AutoCal, Auto-Count, Balance, BESTColor, BioVu, BioWare, ColorPASS, Colorproof, ColorWise, Command WorkStation, CopyNet, Cretachrom, Cretaprint, the Cretaprint logo, Cretaprinter, Cretaroller, Digital StoreFront, DirectSmile, DocBuilder, DocBuilder Pro, DockNet, DocStream, DSFdesign Studio, Dynamic Wedge, EDOX, EFI, the EFI logo, Electronics For Imaging, Entrac, EPCount, EPPPhoto, EPRegister, EPStatus, Estimate, ExpressPay, FabriVU, Fast-4, Fiery, the Fiery logo, Fiery Driven, the Fiery Driven logo, Fiery JobFlow, Fiery JobMaster, Fiery Link, Fiery Navigator, Fiery Prints, the Fiery Prints logo, Fiery Spark, FreeForm, Hagen, Inkintensity, Inkware, LapNet, Logic, Metrix, MicroPress, MiniNet, Monarch, OneFlow, Pace, Pecas, Pecas Vision, PhotoXposure, PressVu, Printcafe, PrinterSite, PrintFlow, PrintMe, the PrintMe logo, PrintSmith, PrintSmith Site, PrintStream, Print to Win, Prograph, PSI, PSI Flexo, Radius, Remoteproof, RIPChips, RIP-While-Print, Screenproof, SendMe, Sincolor, Splash, Spot-On, TrackNet, UltraPress, UltraTex, UltraVu, UV Series 50, VisualCal, VUTEk, the VUTEk logo, and WebTools are trademarks of Electronics For Imaging, Inc. and/or its wholly owned subsidiaries in the U.S. and/or certain other countries.

All other terms and product names may be trademarks or registered trademarks of their respective owners, and are hereby acknowledged.