



Educational Services

---

**How-To:** Create a Monitor Profile

**Date:** August 2012

# How-To

Create an ICC profile for CRT, LCD and laptop displays

## Feature Overview

Fiery Color Profiler Suite v4.0 allows for creation of monitor profiles for CRT, LDC and laptop screens. There are two choices for creation: Basic and Advanced. Both allow for your viewing screen to conform to industry standards in profile creation.

## Customer Benefits

- Create a 'Baseline' for your viewing screen.
- Allows an opportunity to match multiple monitors to a reference monitor and ensures accurate soft-proofing of documents on screen.
- Easy-to-use interface simplifies the monitor profile creation process.

## Objectives of Exercise

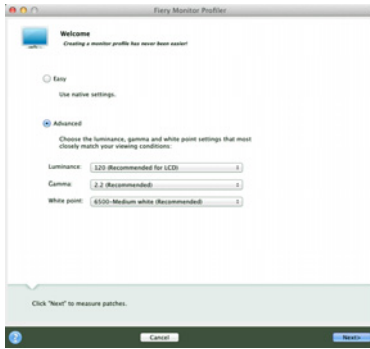
- Create an ICC monitor profile
- Compare a before & after calibration
- Save the created ICC profile

## Before you begin

- Install and launch Fiery Color Profiler Suite 4.0
- Have access to an EFI ES-2000 for screen measurements



**Note:** Each monitor device type will have different methods for capturing your measurements, use caution in selecting the proper monitor attachment tool to use with your EFI ES-2000.



## Creating a Monitor Profile

1. Launch Color Profiler Suite. The **Create Profile** and **Evaluate Profile** window opens.
2. Select **Monitor** and the **Fiery Monitor Profiler** window opens.
3. Select the method to create the monitor profile, **Easy** or **Advanced**. For this example choose **Easy**



**Note:** If you wish to create your monitor profile quickly select Easy. If you are using a monitor that does not include Gamma and White point controls, you should use the Easy mode to create your monitor profile. This is the best setting for Apple LCD Monitors.

4. The **Monitor Type** windows opens (Above **left** screen shot)
5. Select either the: **CRT**, **LCD** or **Laptop** type of screen you wish to calibrate and select **Next** to begin.
6. Place the EFI spectrophotometer into the calibration cradle and click **Next**.
7. When the Spectrophotometer completes its calibration routine, place it into the monitor cradle and position it on the monitor using the attached strap and weight to hold it in position.
8. Click **Next** to begin measuring the monitor.
9. The monitor will cycle through a sequence of colors and a progress bar will be displayed.
10. When the measurements are completed select **Next** to create the profile and install it on your workstation.
11. You can name the new monitor profile.
12. You can select **Compare before and after to review** on-screens colors using the previous monitor profile and new profile. Close the **Before and After** preview.
13. Select **Next** to continue creating the monitor profile.
14. Select the location to save the new profile and select **Save**.
15. The new profile will be installed on your workstation and set as the default display profile.
16. Select **Done** to close the Monitor profiler.



EFI invents integrated digital technology for businesses and enterprises worldwide that helps them increase their profits, productivity, efficiency and customer satisfaction.

## Why EFI?

EFI™ ([www.efi.com](http://www.efi.com)) helps businesses worldwide bring their visions and goals to life with a scalable, digital product portfolio. Our powerful servers; controllers; RIPs; inkjet printers, and precise color and imaging solutions help companies increase their brand recognition and market reach on signs, buildings, bus wraps, graphic displays and more. Our business automation software helps companies work faster and more cost-effectively. Our office, enterprise and mobile cloud solutions help companies create, access, and communicate impactful information that can win them more business.

Auto-Count, BioVu, BioWare, ColorWise, Command WorkStation, Digital StoreFront, DocBuilder, DocBuilder Pro, DocStream, EDOX, the EFI logo, Electronics For Imaging, Fabrivu, Fiery, the Fiery logo, Inkware, Jetrion, MicroPress, OneFlow, PressVu, Printelect, PrinterSite, PrintFlow, PrintMe, PrintSmith Site, Prograph, RIP-While-Print, UltraVu and VUTEk are registered trademarks of Electronics For Imaging, Inc. in the U.S. and/or certain other countries. BESTColor is a registered trademark of Electronics For Imaging GmbH in the U.S.

The APPS logo, AutoCal, Balance, ColorPASS, Dynamic Wedge, EFI, Estimate, Fast-4, Fiery Driven, the Fiery Driven logo, Fiery Link, Fiery Prints, the Fiery Prints logo, Fiery Spark, FreeForm, Hagen, the Jetrion logo, Logic, Pace, Printcafe, the PrintMe logo, PrintSmith, Print to Win, PSI, PSI Flexo, Rastek, the Rastek logo, RIPChips, SendMe, Splash, Spot-On, UltraPress, UltraTex, UV Series 50, VisualCal, the VUTEk logo and WebTools are trademarks of Electronics For Imaging, Inc. in the U.S. and/or certain other countries. Best, the Best logo, Colorproof, PhotoXposure, Remoteproof, and Screenproof are trademarks of Electronics For Imaging GmbH in the U.S. and/or certain other countries.

All other terms and product names may be trademarks or registered trademarks of their respective owners, and are hereby acknowledged.

© 2011 Electronics For Imaging