

How-To:

Optimize Color Quality of Documents



How-To: Optimize Color Quality of Documents

Feature Overview

Learn how to produce great color quality documents by taking advantage of the standard state-of-the-art Fiery color reproduction capabilities including spot colors, auto-trapping, image smoothing, spot color composite overprint, text & graphics enhancement.

Customer Benefits

- Fiery's color management tools minimize operator's errors with easy user interface and provides excellent color quality for proofs, comps or short run color.
- Composite Overprint ensures an accurate print of a document including spot color overprints.
- Spot On achieves color consistency across all documents.
- Users can use Spot-On to fine-tune a given PANTONE color without the need to revert back to the source application or edit the PDF.
- Auto-trapping minimizes possible print engine deficiencies.
- Text & Graphics enhancement feature increases output quality, achieving better definition of black text and graphics.

Objectives of the Exercise

- Use Color Setup to define the Profiles used to print the document
- Configure the Job Properties to print the document with Composite Overprint color settings enabled

Additional Resources

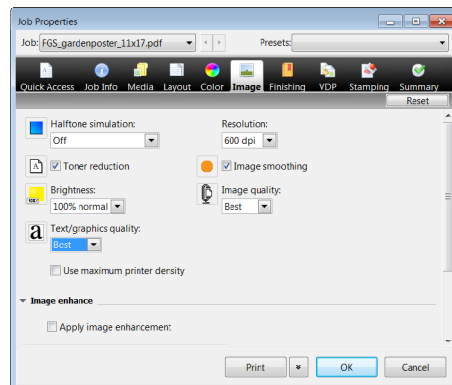
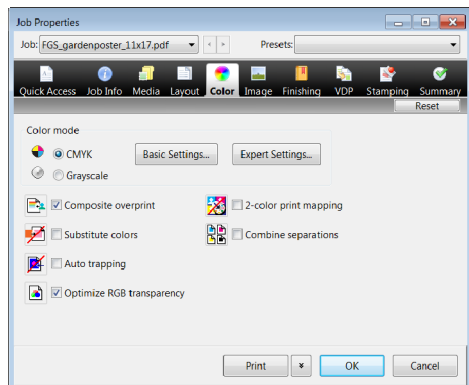
If you would like to learn more about Fiery product features, EFI has created interactive online courses designed to enhance Fiery product knowledge and help increase performance. For complete list of the online courses we offer, go to the [Fiery eLearning](#) web page.

Before you begin

- Install Fiery Command WorkStation 5.5 or above on either a Windows or Macintosh client and connected to a Fiery server, running Fiery FS150/FS150 Pro or above.
- Have the sample file: **FGS_gardenposter_11x17.pdf** or **FGS_gardenposter_A3.pdf** in the Fiery Held queue. Drag and drop the file to the Command WorkStation Held queue or use the Command WorkStation Import menu option.
- Ensure the printer and Fiery have been calibrated before printing any output.

**Note:**

Each output device will have different procedures for configuring and printing the finished document. Consult the user documentation for the copier and Fiery server that will be used for this How-To Guide.



Apply Optimized Color and Image Quality Settings in Job Properties

1. Select the file: **FGS_gardenposter_11x17.pdf** or **FGS_gardenposter_A3.pdf** and right-click to select **Print and hold** from the pop-out menu.
2. Collect the output to compare with the final print at the end of this exercise.
3. Locate the file: **FGS_gardenposter_11x17.pdf** or **FGS_gardenposter_A3.pdf** in the Held queue and select **Job Properties**.
4. Select the **Color** tab.
 - a. Check to enable **Optimize RGB Transparency**.
 - b. Select **Expert Settings...** to open the **Advanced Edit** window.
 - c. In the Color Input tab **CMYK/Grayscale** area, check to enable **PDF/X output intent**.
 - d. In the **RGB Lab** area, check to enable **Use embedded profile when present**.
 - e. In the **Spot color** area, check to enable **Spot color matching**.
 - f. Select the **Output** tab, and confirm the correct output profile is chosen for your workflow.
 - g. Select **OK** to close the Advanced Color settings window.
5. Select the **Image** tab.
 - a. Select **Image Smoothing**.
 - b. Select **Text/Graphics Quality** select **Best**.
6. Select **Print** to submit the job to the output device.
7. Collect the output and compare with the first print sample.

How-To: Optimize Color Quality of Documents



Note:

Page two for this sample file contains information to identify each area on page one to reference the Job Property setting that affected the output to print optimized color.



FGS Garden Poster Description

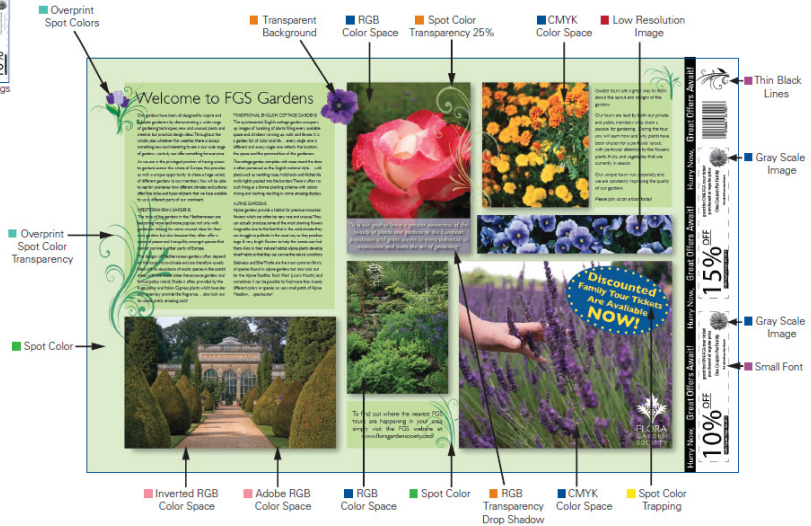
This poster demonstrates the key color management qualities a Fiery® server can handle. It produces the best matches for spot colors. It handles transparencies and overprints beautifully. And Fiery servers can manage multiple color spaces in a single document.

The sample file image to the right shows all the settings users can check to guarantee the best output.

1. Use when APPE is not selected.
2. Select either Auto Trapping or Best Quality for Text/Graphics.

To properly configure Fiery Driver settings and Job Properties, check the following...

- Composite Overprint
- Optimize RGB Transparency¹
- Auto Trapping
- Image Smoothing
- Text/Graphics Quality Best²
- Image Quality Best
- Use Embedded Profiles when Present
- Spot Color Matching



FGS Gardening Poster

The efi logo, Electronics For Imaging, Fiery, and the Fiery logo are registered trademarks, and efi is a trademark, of Electronics For Imaging, Inc. in the U.S. and/or certain other countries. All other terms and product names may be trademarks or registered trademarks of their respective owners, and are hereby acknowledged. The example companies, organizations, products, people and events depicted herein are fictitious. No association with any real company, organization, product, person, or event is intended or should be inferred. © 2012 Electronics For Imaging



EFI fuels success.

From Fiery to super wide inkjet, from the lowest cost per label to the most automated business processes, EFI has everything your company needs to succeed. Visit www.efi.com or call 650-357-3500 for more information.



The APPS logo, AutoCal, Auto-Count, Balance, Best, the Best logo, BESTColor, BioVu, BioWare, ColorPASS, Colorproof, ColorWise, Command WorkStation, CopyNet, Cretachrom, Cretaprint, the Cretaprint logo, Cretaprinter, Cretaroller, DockNet, Digital StoreFront, DocBuilder, DocBuilder Pro, DocStream, DSFdesign Studio, Dynamic Wedge, EDOX, EFI, the EFI logo, Electronics For Imaging, Entrac, EPCount, EPPPhoto, EPRegister, EPStatus, Estimate, ExpressPay, Fabrivu, Fast-4, Fiery, the Fiery logo, Fiery Driven, the Fiery Driven logo, Fiery JobFlow, Fiery JobMaster, Fiery Link, Fiery Prints, the Fiery Prints logo, Fiery Spark, FreeForm, Hagen, Inkintensity, Inkware, Jetrion, the Jetrion logo, LapNet, Logic, MiniNet, Monarch, MicroPress, OneFlow, Pace, PhotoXposure, Printcafe, PressVu, PrinterSite, PrintFlow, PrintMe, the PrintMe logo, PrintSmith, PrintSmith Site, Printstream, Print to Win, Prograph, PSI, PSI Flexo, Radius, Rastek, the Rastek logo, Remoteproof, RIPChips, RIP-While-Print, Screenproof, SendMe, Sincolor, Splash, Spot-On, TrackNet, UltraPress, Ultraflex, UltraVu, UV Series 50, VisualCal, VUTEK, the VUTEK logo, and WebTools are trademarks of Electronics For Imaging, Inc. and/or its wholly owned subsidiaries in the U.S. and/or certain other countries.