

# How-To:

## Impose Business Cards



# How-To: Impose Business Cards

## Feature Overview

Fiery Impose is a server-based imposition application option that streamlines and automates the imposition process, making production more efficient. The gangup imposition type is commonly used when printing business cards. This imposition can take advantage of the User Defined Finish Size setting in Impose. This setting honors the designer's intent by automatically detecting the trim box and bleed box defined in the PDF document.

The User Defined Finish Size in Fiery Impose can be saved as an imposition template to enable users to automate future job submissions with Fiery Hot Folders.

## Customer Benefits

- Avoids the need to control imposition settings manually, resulting in a more accurate finished job.
- Decreases errors and waste.
- Automates job submission with Fiery Hot Folders.

## Objectives of the Exercise

- Create an imposition layout for a business card.
- Apply the User Defined workflow
- Enable gutter and bleed parameters and apply to layout.
- Save the Impose template
- Create a Fiery Hot Folder to apply the created impose template

## Additional Resources

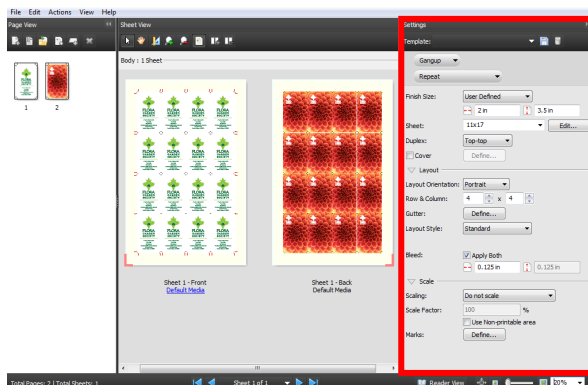
If you would like to learn more about Fiery product features, EFI has created interactive online courses designed to enhance Fiery product knowledge and help increase performance. For complete list of the online courses we offer, go to the [Fiery eLearning](#) web page.

## Before you begin

- Have Command WorkStation 5.7 or above opened and connected to at least one Fiery server.
- Activate the Fiery Impose license on the Command WorkStation client.
- Have Fiery Hot Folders installed on the same client.
- Place the sample file: **FGS\_BusinessCard.pdf** in the Fiery Held queue. Drag and drop the file to the Command WorkStation Held queue or use the Command WorkStation Import menu option.
- Ensure the printer and Fiery have been calibrated before printing any output.

**Note:**

Each output device will have different procedures for configuring and printing the finished document. Consult the user documentation for the copier and Fiery that will be used for this How-To Guide.



## Create User Defined Impose template

1. Select the file **FGS\_BusinessCard.pdf** in the Command Workstation Held queue, right-click and select **Impose**.
2. In the Impose window, select **Gangup** for the product intent in the Settings pane.
3. Below Gangup, open the second dropdown and select **Repeat**.
4. Select **User Defined** for Finish size.
5. Select **11x17/A3** for the **Sheet** size.
6. Select **Top-Top** for **Duplex** (Note the duplex options will vary with device).
7. In the Layout section, select **Portrait** for **Layout Orientation**.
8. Set Rows **4** and Column **4**.
9. Select the **Define...** button next to Gutter.
10. Enter **0.25 inch** into one box area, select **Apply All** and select **OK**. The gutter will show a 0.25 inch white space between each card in the Sheet View area.
11. Notice the Bleed Value was automatically set when the job was opened in Impose with the User Defined option set as default from the Command WorkStation preferences.



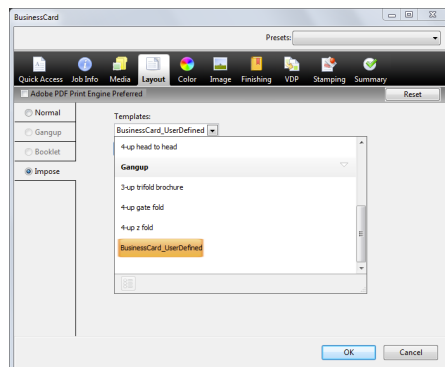
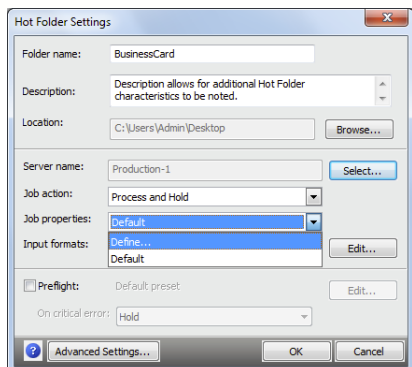
### Note:

Impose populates the finish size values from the trim size value in the document, once **User Defined** is enabled.

Impose automatically populates the bleed value from the document, once **User Defined** is enabled.

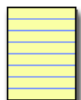
12. In the **Marks** area, Select the **Define...** button.
13. In the **Trim** tab check the **Print trim marks** box.
14. Check to enable the option Print mark on front surface only, and select the **OK** to close.
15. Save your Settings as a template, select the **disk icon**. For this example save as: **BusinessCard\_UserDefined** and click **OK**.
16. Select **Exit** from the file menu to close Impose and save your changes or select the red **X** located in the upper right corner.
17. The Save window opens, select **No** to not save your job.
18. In the next section, this template will be applied to a Hot Folder.

## How-To: Impose Business Cards



## Create Fiery Hot Folder to apply Impose template

1. Open Fiery Hot Folders from your desktop.
2. Select the **New...** icon in the toolbar to create a new Hot Folder.
3. Enter a name for the new folder. For this example enter **BusinessCard**.
4. **Description** allows for additional Hot Folder characteristics to be noted. Be as descriptive as possible to describe how the Hot Folder documents will output.
5. **Location** displays the default location where the new Hot Folder will be created. To change the location select **Browse...** For this example, leave the default location which is the desktop.
6. Use the **Select...** button to select the Fiery server.
7. When the **Connect to Server** window opens, use the **search icon** (magnifying glass) to search for a Fiery server on your network. Select the Fiery server that will receive jobs submitted using Hot Folders and select **Connect**.



**Note:** If the Fiery server is located on a different TCP/IP subnet, select the search menu and select either Subnet or IP Range to expand the search beyond the local TCP/IP subnet.

8. Select the **Job Action**. For this exercise select **Process and Hold** from the drop-down menu.
9. In the **Job Properties** dropdown window select **Define....**
10. When the **Job Properties** window opens, select the **Layout** tab.
11. In the **Layout** tab, select **Impose** and from the **Templates** dropdown window select the **Impose** template **BusinessCard\_UserDefined**.
12. Next select the **Media** tab to select your Paper Catalog setting, and click **OK** to close.
13. Click **OK** to close the Hot Folder Settings window.
14. Check over the description details and the Job Properties for the Fiery Hot Folders Console **BusinessCard** and minimize the window.
15. Drag and drop your **FGS\_businesscard.pdf** into the **BusinessCard Hot Folder** located on the desktop.
16. Open Command WorkStation and select the **FGS\_businesscard.pdf.dbp** processed and held file in the Held queue.
17. View the preview image in the Job Summary pane to check the outcome.



# EFI fuels success.

From Fiery to super wide inkjet, from the lowest cost per label to the most automated business processes, EFI has everything your company needs to succeed. Visit [www.efi.com](http://www.efi.com) or call 650-357-3500 for more information.



The APPS logo, AutoCal, Auto-Count, Balance, Best, the Best logo, BESTColor, BioVu, BioWare, ColorPASS, Colorproof, ColorWise, Command WorkStation, CopyNet, Cretachrom, Cretaprint, the Cretaprint logo, Cretaprinter, Cretaroller, DockNet, Digital StoreFront, DocBuilder, DocBuilder Pro, DocStream, DSFdesign Studio, Dynamic Wedge, EDOX, EFI, the EFI logo, Electronics For Imaging, Entrac, EPCount, EPPPhoto, EPRegister, EPStatus, Estimate, ExpressPay, Fabrivu, Fast-4, Fiery, the Fiery logo, Fiery Driven, the Fiery Driven logo, Fiery JobFlow, Fiery JobMaster, Fiery Link, Fiery Prints, the Fiery Prints logo, Fiery Spark, FreeForm, Hagen, Inkintensity, Inkware, Jetrion, the Jetrion logo, LapNet, Logic, MiniNet, Monarch, MicroPress, OneFlow, Pace, PhotoXposure, Printcafe, PressVu, PrinterSite, PrintFlow, PrintMe, the PrintMe logo, PrintSmith, PrintSmith Site, Printstream, Print to Win, Prograph, PSI, PSI Flexo, Radius, Rastek, the Rastek logo, Remoteproof, RIPChips, RIP-While-Print, Screenproof, SendMe, Sincolor, Splash, Spot-On, TrackNet, UltraPress, Ultraflex, UltraVu, UV Series 50, VisualCal, VUTEK, the VUTEK logo, and WebTools are trademarks of Electronics For Imaging, Inc. and/or its wholly owned subsidiaries in the U.S. and/or certain other countries.