

How-To:

Use Fiery Pre-press Tools for Troubleshooting



How-To Use Fiery Pre-press Tools for Troubleshooting

Feature Overview

The Fiery Graphic Arts Package, Premium Edition is a professional toolkit that compliments the Fiery server with a series of features to softproof, preflight and troubleshoot customer files.

Especially created for digital color printing, Preflight is the fastest and most intuitive preflight tool in the market. It checks for the most common errors to ensure that files will print successfully on a Fiery Driven print engine. Preflight offers a fast process that does not affect the performance of the Fiery server because it is a function performed separately from job processing. The user sees the Preflight report displayed in the screen in a matter of few seconds. In reviewing the report, the user knows at a glance if there are errors in the job and the status of every checked area with color-coding and icons.

Postflight is the process of analyzing processed files—PostScript, PDF, DCS2, and others—for quality control in a digital prepress workflow. Postflight report is a perceptive utility letting operators troubleshoot previous problems with the color of a printed job. They also may choose to use it as a preventative measure.

Customer Benefits

- Preflight speeds up the troubleshooting process of problematic files by detecting printing errors in advance. Reduces time and resource waste.
- Preflight improves communications with document designers and customers by using the preflight report to improve the quality of the jobs submitted to the Fiery. Reduces turnaround time.
- Postflight reduces the amount of time an operator has to spend printing and reprinting their jobs -- each time with different color settings. This feature reduces waste and obsolescence.
- Postflight minimizes the amount of time spent “tweaking” a job and helps users work more efficiently. It also increases production.
- Postflight Report delivers color-coded reports to quickly and easily identify potential printing issues, such as mixed source colors and spot colors.
- Postflight allows troubleshooting of problem jobs by identifying types of content, reporting spot colors in case they need to be added in Spot-On, and printing test pages to confirm whether the problem is in the file or with the printer hardware.

Objectives of the Exercise

- Perform Fiery Preflight
- Resolve the issues found in the Preflight report for a missing spot color
- Perform Fiery Postflight to locate the missing spot color

Additional Resources

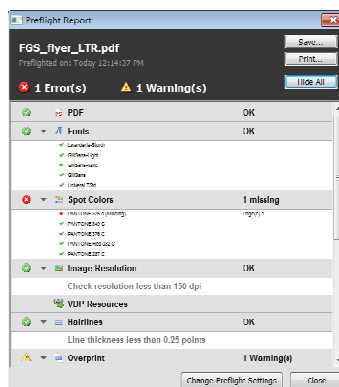
If you would like to learn more about Fiery product features, EFI has created interactive online courses designed to enhance Fiery product knowledge and help increase performance. For a complete list of the online courses we offer, go to the [Fiery eLearning](#) web page.

Before you begin

- Have Command WorkStation 5.5 or above opened and connected to at least one Fiery server, running Fiery FS150/FS150 Pro or above.
- The Fiery FS150 Pro server must have the Graphic Arts Package, Premium Edition installed.
- The Fiery FS150 must have the Productivity Package installed.
- Place the sample file: **FGS_flyer_LTR.pdf** or **FGS_flyer_A4.pdf** in the Fiery Held queue. Drag and drop the file to the Command WorkStation Held queue or use the Command WorkStation Import menu option.
- Ensure the printer and Fiery have been calibrated before printing any output.

**Note:**

Each output device will have different procedures for configuring and printing the finished document. Consult the user documentation for the copier and Fiery that will be used for this How-To Guide.



Preflight the Job

1. Select the job: **FGS_flyer_LTR.pdf** or **FGS_flyer_A4.pdf** in the Held queue, right-click and select **Preflight**.
2. Select the settings for each of the Preflight items checked by preflight and the reporting level (Critical or Warning). For this example, use the default settings.
 - a. **Stop Preflight on first critical error- Off**
 - b. **Fonts:** Missing Fonts—**On Critical**. Check courier is present—**On Warning**
 - c. **Spot Colors:** Missing Spot Colors—**On Critical**
 - d. **Image Resolution:** Check resolution less that 150 dpi (150dpi is default)—**On Warning**
 - e. **VDP Resources:** Missing resources—**Off**. Preflight only the first 10 records— **Off**
 - f. **Hairlines:** Line thickness less than 0.25 points (0.25 is the default) —**On Warning**
 - g. **Overprint:** Detect Overprint—**On Warning**



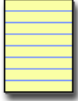
Note: If you have specific Preflight settings you want to apply to jobs in the future, select to save the Preflight settings for use on other jobs by saving as a Preset.

3. Select **Preflight** to preflight the job.
4. The **Preflight** report will be generated and displayed.
5. Select **Show All** to see a more detailed report.
6. For this example, one error was found for spot color Pantone 375c missing and one warning message that this job contains overprints. These items should be corrected before printing the job.



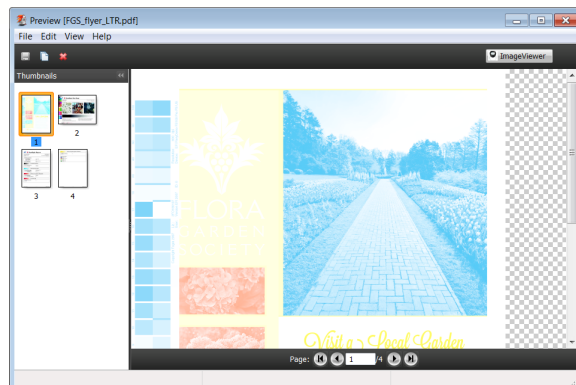
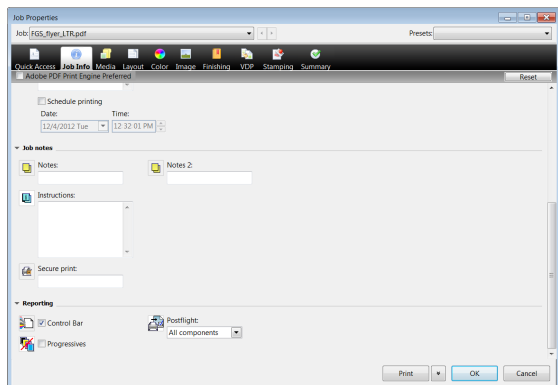
Note: The missing Spot color can be resolved by adding it to the Fiery Spot Color library. See the How-To Capture and Reproduce Spot Colors Accurately for information on creating a new Spot Color Group and a new Spot Color.

7. **Save...** will allow you to save the Preflight settings to a PDF file to share.
8. Close the **Preflight** report.



Note:

The Critical response will mark the job as failed. The Warning response will mark the job as passed and warning date will be recorded in the preflight report.



Postflight the Job

1. Select the job: **FGS_flyer_LTR.pdf** or **FGS_flyer_A4.pdf** in the Held queue and right-click to select **Properties**.
2. Select the **Job Information** tab.
3. Scroll down and select **Reporting**.
4. Turn on the **Control Bar**.
5. Select the **Postflight** menu and choose the reporting level for the job. For this example select **All Components** to generate a complete report, including the Detailed Report, Test Pages, and Color-Coded pages.
6. Select the **Media** tab in the toolbar.
7. In the Output Paper Size: menu, select **12 x 18** or **SRA3**.
8. Select the **Color** tab and verify **Composite Overprint** is enabled. This is the default selection.
9. Select **Print** to apply the Job Properties and print the job.
10. Collect the output.
11. The job will be printed with the complete Postflight report. The Postflight report will color code each element on the page to reflect the type of color data used.

The Postflight report will include descriptions for the color codes.

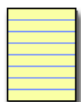
Red objects represent RGB Objects (Device RGB)

Cyan objects represents CMYK Objects (Device CMYK)

Red objects represent RGB Objects (Device RGB)

Yellow objects represent Named Color Objects (Spot Colors)

Black objects represent Gray Object (Device Gray)



Note:

12. In the Color-Coded page report, review the yellow objects to identify the placement for the missing Pantone color.
13. The complete report will also include the Postflight report detailing the Color settings used to print the job and tools that can be used to adjust the color output.

EFI fuels success.

From Fiery to super wide inkjet, from the lowest cost per label to the most automated business processes, EFI has everything your company needs to succeed. Visit www.efi.com or call 650-357-3500 for more information.



The APPS logo, AutoCal, Auto-Count, Balance, Best, the Best logo, BESTColor, BioVu, BioWare, ColorPASS, Colorproof, ColorWise, Command WorkStation, CopyNet, Cretachrom, Cretaprint, the Cretaprint logo, Cretaprinter, Cretaroller, DockNet, Digital StoreFront, DocBuilder, DocBuilder Pro, DocStream, DSFdesign Studio, Dynamic Wedge, EDOX, EFI, the EFI logo, Electronics For Imaging, Entrac, EPCount, EPPhoto, EPRegister, EPStatus, Estimate, ExpressPay, Fabrivu, Fast-4, Fiery, the Fiery logo, Fiery Driven, the Fiery Driven logo, Fiery JobFlow, Fiery JobMaster, Fiery Link, Fiery Prints, the Fiery Prints logo, Fiery Spark, FreeForm, Hagen, Inkintensity, Inkware, Jetrion, the Jetrion logo, LapNet, Logic, MiniNet, Monarch, MicroPress, OneFlow, Pace, PhotoXposure, Printcafe, PressVu, PrinterSite, PrintFlow, PrintMe, the PrintMe logo, PrintSmith, PrintSmith Site, Printstream, Print to Win, Prograph, PSI, PSI Flexo, Radius, Rastek, the Rastek logo, Remoteproof, RIPChips, RIP-While-Print, Screenproof, SendMe, Sincolor, Splash, Spot-On, TrackNet, UltraPress, Ultraflex, UltraVu, UV Series 50, VisualCal, VUTEK, the VUTEK logo, and WebTools are trademarks of Electronics For Imaging, Inc. and/or its wholly owned subsidiaries in the U.S. and/or certain other countries.