

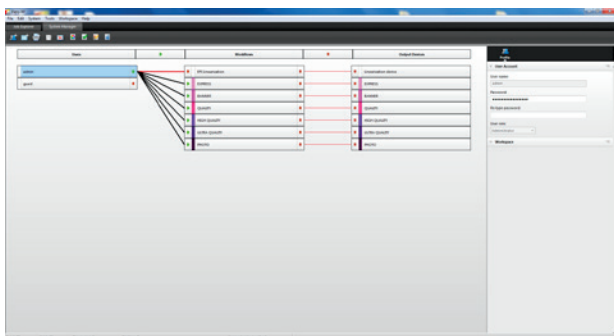


How to set up and use the EFI H1625 LED Print Control Utility.

The Print Control Utility is a new feature on EFI™ Wide Format H Series printers, and allows users to pre-rip and store files for future use.

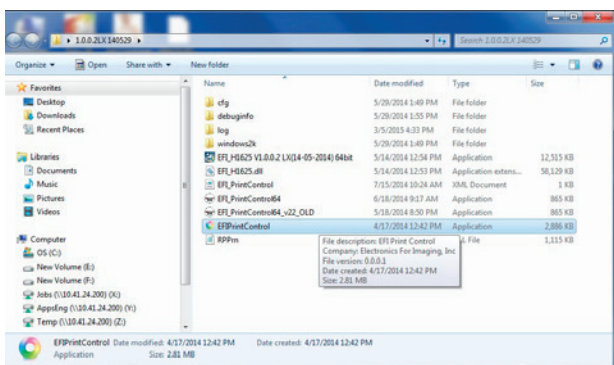
This is particularly helpful when multiple jobs enter the production environment and organisation is needed. Previously, files had to be ripped and printed on the fly, which meant the printer was printing and ripping jobs simultaneously. This method is not only inefficient for ripping multiple jobs, but also did not provide a way to save the ripped file. If a job needed to be re-printed, the file had to be ripped again. The Print Control Utility resolves these issues by allowing multiple jobs to be ripped at the same time and stored for later use. The following will walk you through how to set up and use the Print Control Utility.

Fiery XF setup



The first step is to change the workflow settings in the System Manager tab of Fiery® XF. To send ripped files to the Output Folder instead of straight to the printer, red squares must appear between the connecting workflow and output device, as seen in photo 1 below. The easiest way to change all is to click in the box between the Workflows and Output Devices headings. If there is a green arrow displayed, it will change to a red square once clicked, resulting in the desired settings. You are now ready to rip your file.

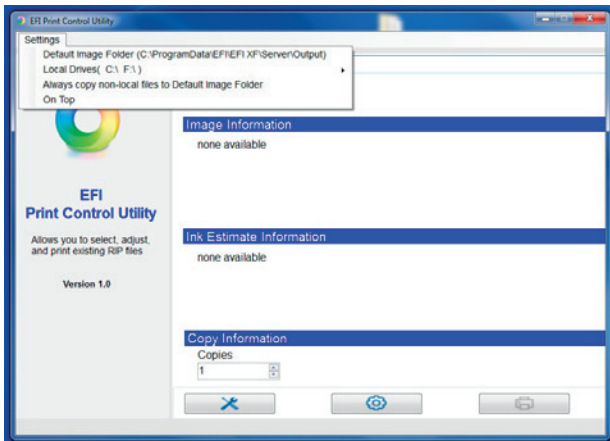
Print Control Utility setup



- A rainbow-coloured Print Control Utility icon should be visible either in your Taskbar or on your Desktop. If it is not, you will find it in the H1625 LED software folder. Double click to open the utility.

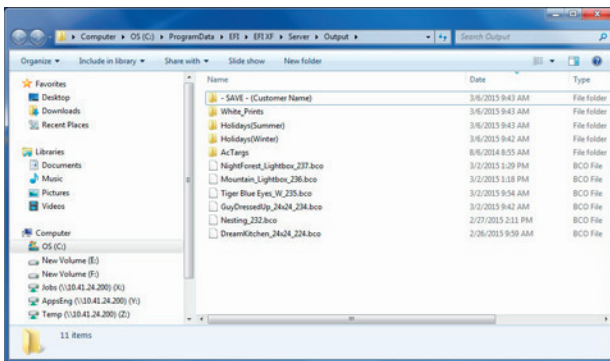
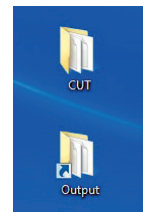


Print Control Utility setup cont.



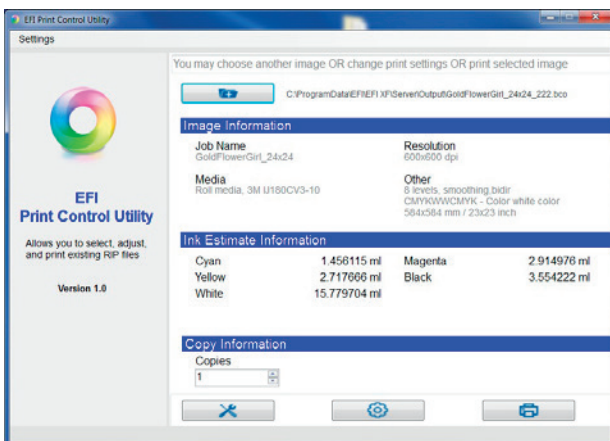
- Next, find where your ripped files are located by clicking on the Settings menu. The location where the Print Control Utility searches for your ripped files will be shown in the dropdown.

- Make a shortcut of this Output folder on your desktop by right clicking on the desktop and creating a shortcut, or right clicking on the actual folder and saving as a shortcut on your desktop.



- Within this folder, you will be able to re-name your ripped files and make sub-folders to store repeat jobs. This is beneficial when colour match between recent and previous jobs is critical. This eliminates any guesswork that may result from old jobs coming back for more prints or loss of previous operator knowledge.

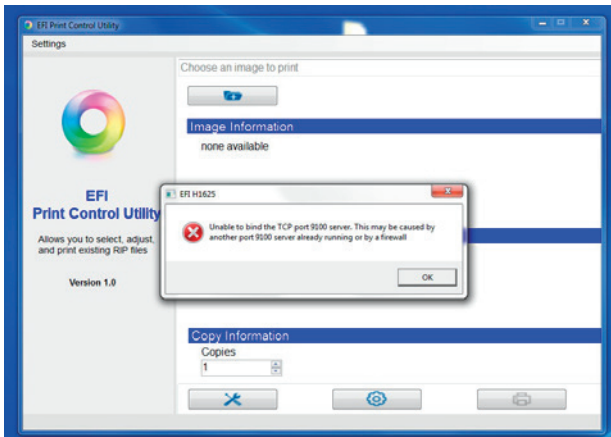
Printing



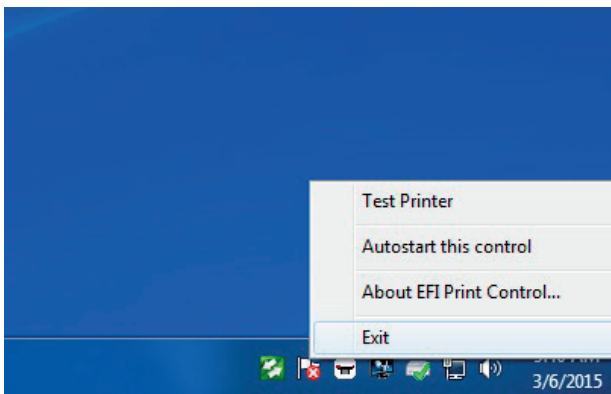
- To access files when ready to print, simply click the folder icon at the top of the Print Control Utility, and then, choose your ripped (.bco) file. This will import the file into your utility and give you file information, such as size, ink usage, colour order (CMYK, Colour with White, etc.).
- This window also allows you to enter the actual printer controls by clicking either the tools or gear icons at the bottom of the utility. This will open the control window that allows you to purge, set gaps, scan the media, set margins, etc.
- Once your settings are all correct, simply click on the printer icon, and the print process will begin.



Troubleshooting



- If for some reason you get an error, such as the one shown, the printer control middleware is open and needs to be exited.



- To exit, look in the lower right corner of your Windows desktop and find the white, red and black printer icon. Right click on that icon and choose Exit from the dropdown menu. After exiting, the Print Control Utility should open without error.

EFI fuels success.

From Fiery to superwide inkjet, from the lowest cost per label to the most automated business processes, EFI has everything your company needs to succeed. Visit www.efi.com or call 0808 101 3484 or +44 (0)1246 298000 for more information.



Nothing herein should be construed as a warranty in addition to the express warranty statement provided with EFI products and services.

The APPS logo, AutoCal, Auto-Count, Balance, Best, the Best logo, BESTColor, BioVu, BioWare, ColorPASS, Colorproof, ColorWise, Command WorkStation, CopyNet, Cretachrom, Cretaprint, the Cretaprint logo, Cretaprinter, Cretaroller, DockNet, Digital StoreFront, DocBuilder, DocBuilder Pro, DocStream, DSFdesign Studio, Dynamic Wedge, EDOX, EFI, the EFI logo, Electronics For Imaging, Entrac, EPCount, EPPhoto, EPRegister, EPStatus, Estimate, ExpressPay, Fabrivu, Fast-4, Fiery, the Fiery logo, Fiery Driven, the Fiery Driven logo, Fiery JobFlow, Fiery JobMaster, Fiery Link, Fiery Prints, the Fiery Prints logo, Fiery Spark, FreeForm, Hagen, Inkintensity, Inkware, Jetrion, the Jetrion logo, LapNet, Logic, MiniNet, Monarch, MicroPress, OneFlow, Pace, PhotoXposure, Printcafe, PressVu, PrinterSite, PrintFlow, PrintMe, the PrintMe logo, PrintSmith, PrintSmith Site, Printstream, Print to Win, Prograph, PSI, PSI Flexo, Radius, Rastek, the Rastek logo, Remoteproof, RIPchips, RIP-While-Print, Screenproof, SendMe, Sincrolor, Splash, Spot-On, TrackNet, UltraPress, UltraTex, UltraVu, UV Series 50, VisualCal, VUTEK, the VUTEK logo, and WebTools are trademarks of Electronics For Imaging, Inc. and/or its wholly owned subsidiaries in the U.S. and/or certain other countries. All other terms and product names may be trademarks or registered trademarks of their respective owners, and are hereby acknowledged.