

FS200 How to: Produce notepads



FS200 How to: Produce notepads

Feature overview

Pads or notepads have an unlimited number of uses including memo or message pads, forms and personalized notepads as promotional advertising material.

The Fiery® sever can automate the production of printing pads. The Pad Printing feature minimizes manual collation of the printed output and makes it possible to print large and small projects with as many sheets as you wish and as many sizes. From tiny pocket notepads to large desktop calendars, Pad Printing lets you quickly and easily create pads with any number of pages.

Objectives

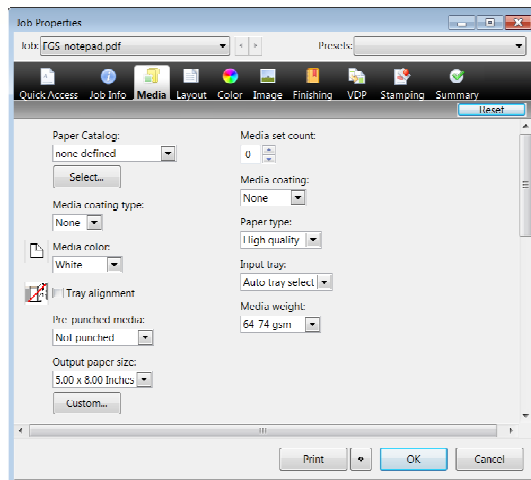
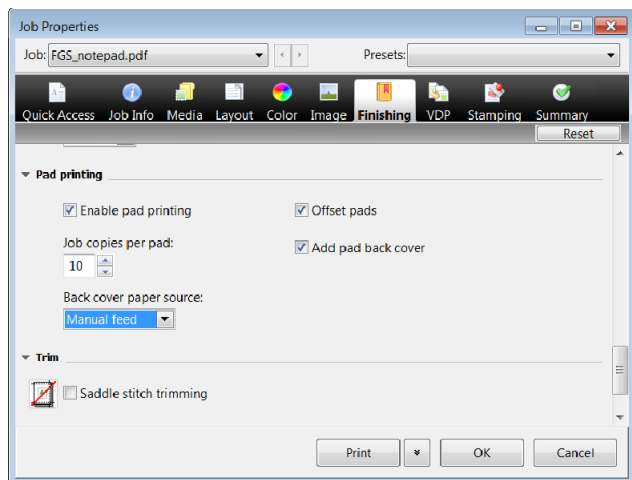
- Pad printing workflow

Additional resources

For additional software downloads, training resources and more, go to [Fiery Online Resources](#).

Before you begin

- Open Fiery Command WorkStation® 5.7 or later and connected to at least one Fiery server running Fiery FS200 Pro.
- Place the sample file, **FGS_notepad.pdf**, in the Fiery server Hold queue. Drag the file to the Command WorkStation Held list or use the Command WorkStation Import menu option.
- Ensure the printer and Fiery server have been calibrated before printing any output.



Pad printing workflow

1. Select the **FGS_notepad.pdf** file in the Command WorkStation Held list. Then right-click to select **Properties**.
2. In the Job Properties window, click the **Finishing** icon.
3. Scroll down to Pad Printing, and select the **Enable Pad Printing** check box.
4. Enter **10** for Job Copies per pad. The number of copies can be set for 1-999.
5. Select the **Offset pads** check box.
6. Select the **Add pad back cover** check box.

The Add pad back cover option is not available on all printers. When you do use this option, you can also use the Back cover paper source option to specify cover media.

7. If your printer supports the Add back cover option, select the **Back Cover Paper Source** tray.
8. Click the **Media** icon and select the appropriate media options for your workflow.
9. Click **Print**.

EFI fuels success.

From Fiery to super wide inkjet, from the lowest cost per label to the most automated business processes, EFI has everything your company needs to succeed. Visit www.efi.com or call 650-357-3500 for more information.



The APPS logo, AutoCal, Auto-Count, Balance, Best, the Best logo, BESTColor, BioVu, BioWare, ColorPASS, Colorproof, ColorWise, Command WorkStation, CopyNet, Cretachrom, Cretaprint, the Cretaprint logo, Cretaprinter, Cretaroller, DockNet, Digital StoreFront, DocBuilder, DocBuilder Pro, DocStream, DSFdesign Studio, Dynamic Wedge, EDOX, EFI, the EFI logo, Electronics For Imaging, Entrac, EPCount, EPPhoto, EPRegister, EPStatus, Estimate, ExpressPay, Fabrivid, Fast-4, Fiery, the Fiery logo, Fiery Driven, the Fiery Driven logo, Fiery JobFlow, Fiery JobMaster, Fiery Link, Fiery Prints, the Fiery Prints logo, Fiery Spark, FreeForm, Hagen, Inkensity, Inkware, Jetrion, the Jetrion logo, LapNet, Logic, MiniNet, Monarch, MicroPress, OneFlow, Pace, PhotoXposure, Printcafe, PressVu, PrinterSite, PrintFlow, PrintMe, the PrintMe logo, PrintSmith, PrintSmith Site, Printstream, Print to Win, Prograph, PSI, PSI Flexo, Radius, Rastek, the Rastek logo, Remoteproof, RIPchips, RIP-While-Print, Screenproof, SendMe, Sincolor, Splash, Spot-On, TrackNet, UltraPress, Ultraflex, UltraVu, UV Series 50, VisualCal, VUTEK, the VUTEK logo, and WebTools are trademarks of Electronics For Imaging, Inc. and/or its wholly owned subsidiaries in the U.S. and/or certain other countries.