

FS200 How to:

Prepare and produce personalized booklets



How to: Prepare and produce personalized booklets

Feature overview

The VDP Multi-Up Booklet, a Fiery® Impose feature, allows two records to be printed on a sheet, reducing costs by printing on a single, larger sheet. Since users access it via Fiery Impose, they can save settings as an Impose preset that can then be selected from Virtual Printers or Hot Folders for automated job submission.

For records of different page lengths, blank pages will be positioned automatically, based on pagination requirements. If covers are not enabled, the blank pages fall at the end of the job. Otherwise, the blank pages could fall somewhere in the middle after the job is folded during offline finishing.

Objectives

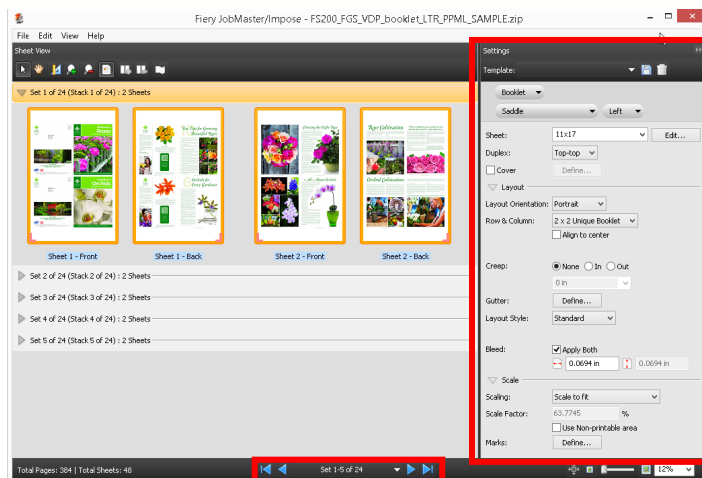
- Impose a variable data booklet.
- Select the records to print.

Additional resources

For additional software downloads, training resources and more, go to [Fiery Online Resources](#).

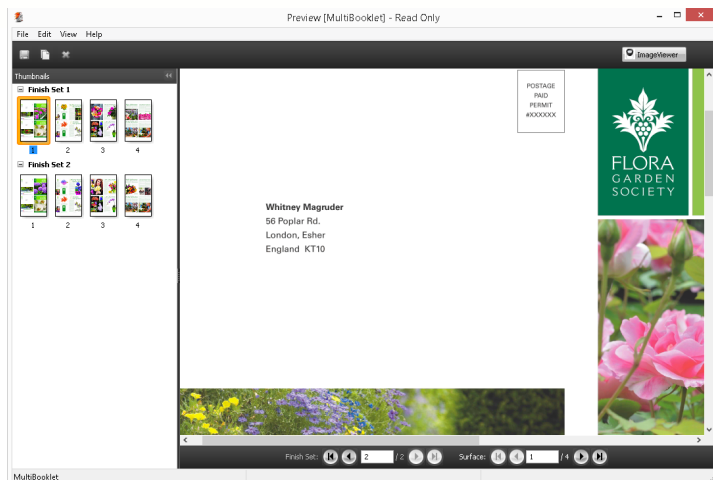
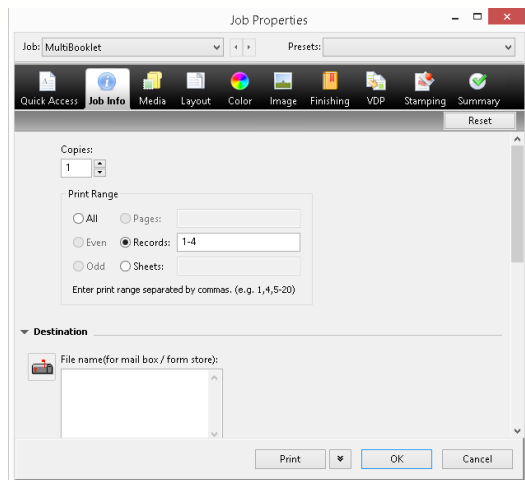
Before you begin

- Open Fiery Command WorkStation® 5.7 or later and connected to at least one Fiery server running FS200 Pro.
- Activate the Fiery Impose license on the computer Command WorkStation is running on.
- Place the sample file, **FS200_FGS_VDP_booklet_LTR_PPML_SAMPLE.zip**, in the Fiery server Hold queue. Drag the file to the Command WorkStation Held list, or use the Command WorkStation Import menu option.
- Ensure the printer and Fiery server have been calibrated before printing any output.



Impose a variable data booklet.

1. Select the **FS200_FGS_VDP_booklet_LTR_PPML_SAMPLE.zip** file in the Command WorkStation Held list. Then right-click and select **Impose**.
2. By default, the pages will be displayed as wireframe previews when imposing a variable data job.
3. In the Impose window, Settings pane, select the Template, **2-up saddle**.
4. For Sheet, select **11 x 17** or **A3**.
5. For Duplex, select **Top-top**.
6. In the Layout area, set the following options:
 - a. Layout & Orientation: **Portrait**.
 - b. Row & Column: **2x2 Unique Booklet**.
7. In Marks, click **Define**.
8. Clear all the **Trim**, **Fold** and **Job Label** tab option check boxes. Then click **OK** when done.
9. Click the **Toggle Sheet Content** icon in the toolbar. Fiery Impose will generate thumbnails for the first record range 1-10.
10. When the first record set is displayed, click the **Expand/Collapse** arrow on **Set 2 of 24** to preview the second record range. Collapse the view when done.
11. Save and name the job. Click **File > Save**.
12. Enter a Job Name For this example, type **MultiBooklet**. Then click **OK** when done.
13. Click **File > Exit** or click the red **X** located in the corner to close Fiery Impose.
14. The new job will be saved in the Held list.



Select the records to print.

1. Select the **MultiBooklet** file in the Command WorkStation Held list. Then right-click to select **Properties**.
2. Click the **Job Info** icon.
3. To print a small subset of the records, click **Records** in the Print Range area.
 - a. For this example, in the Records text box, enter **1-4**.
4. Select **Print and Hold** to send the job to the printer.
5. Select the rasterized job in the Held list. Then right-click to select **Preview**.
6. The output should be two finish sets.
 - The first set of two booklets will be for Whitney Magruder, containing information on roses, and Caroline Armstrong, with information on orchids.
 - The second set of two booklets will be for Robin Sparkman, containing information on bulbs, and Alan Wayne, with information on orchids.
7. The printed documents are ready for offline finishing.



EFI fuels success.

From Fiery to super wide inkjet, from the lowest cost per label to the most automated business processes, EFI has everything your company needs to succeed. Visit www.efi.com or call 650-357-3500 for more information.



The APPS logo, AutoCal, Auto-Count, Balance, Best, the Best logo, BESTColor, BioVu, BioWare, ColorPASS, Colorproof, ColorWise, Command WorkStation, CopyNet, Cretachrom, Cretaprint, the Cretaprint logo, Cretaprinter, Cretaroller, DockNet, Digital StoreFront, DocBuilder, DocBuilder Pro, DocStream, DSFdesign Studio, Dynamic Wedge, EDOX, EFI, the EFI logo, Electronics For Imaging, Entrac, EPCount, EPPhoto, EPRegister, EPStatus, Estimate, ExpressPay, Fabrivid, Fast-4, Fiery, the Fiery logo, Fiery Driven, the Fiery Driven logo, Fiery JobFlow, Fiery JobMaster, Fiery Link, Fiery Prints, the Fiery Prints logo, Fiery Spark, FreeForm, Hagen, Inkensity, Inkware, Jetrion, the Jetrion logo, LapNet, Logic, MiniNet, Monarch, MicroPress, OneFlow, Pace, PhotoXposure, Printcafe, PressVu, PrinterSite, PrintFlow, PrintMe, the PrintMe logo, PrintSmith, PrintSmith Site, Printstream, Print to Win, Prograph, PSI, PSI Flexo, Radius, Rastek, the Rastek logo, Remoteproof, RIPchips, RIP-While-Print, Screenproof, SendMe, Sincolor, Splash, Spot-On, TrackNet, UltraPress, Ultraflex, UltraVu, UV Series 50, VisualCal, VUTEK, the VUTEK logo, and WebTools are trademarks of Electronics For Imaging, Inc. and/or its wholly owned subsidiaries in the U.S. and/or certain other countries.